

2024



Autoease Group
Perspicacity

Autoease Group Profile

Your Business Your Way



Tsepo Mswela

Autoease Communications (PVT) LTD

22/07/1996



AUTOEASE GROUP



AUTOEASE GROUP

Autoease Group Perspicacity.....



Autoease
TeleSpace
Incorporation Africa



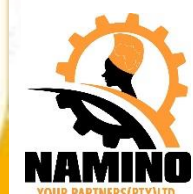
<https://autoeasegroup.wixsite.com/autoeasegroup>

From South Africa to the World

Autoease Group
(PTY) LTD.



3072 Diphakhe Street, Zone B, Sunshale, Parys,
Ngwato, 0685 Free State, South Africa
PMB Community 75, Teyateyan, 0800
Phone: +27 63 030 2102/
+27 632 522 8077
WhatsApp: +262 75 256 5480/+27 63 030 2102
Fax: +27 63 715 0524
Email: agpi@agpi.com
www.agpi.com
www.autoeasegroup.com



AUTOEASE GROUP



Project
Developer



Project Funding
Facilitator



Internationally
Engaged

Global Project Financing Solutions

We find the most direct route for your funding needs.

Group Companies

- Autoease Group (PTY) LTD (South Africa).
- Autoease Group Limited(Turkey).
- Autoease Investments Corporation (PTY)Limited. ABCDE PTY LTD. BOTSWANA
- Petrogate (PTY)Limited
- My City Investments (PTY)LTD
- Autoease Group Travel Ghana (Private) Limited. T/A GOVPAMA, GOLD COAST AIRLINES, KAK GOVPAMA, MEETOP
- Autoease Group Development Limited (Ghana).
- Autoease Group Development Limited (Kenya). T/A UNLEASH AFRICAN ECONOMIES, YOUNG HUSTLERS CLUB
- Autoease Group (UK)Limited.
- Leo Aerospace Technologies (PTY)LTD.
- Ritich One Development Initiative (PTY) LTD.
- Ritich Investments (PTY) LTD.
- TSEPOMPUMI GROUP (PTY)LTD., TSEPOMPUMI FOUNDATION NPC, HOUSTON REALTY (PTY) LTD.
- AUTOEASE GROUP (ZIMBABWE) : AUTOEASE COMMUNICATIONS (PVT) LTD., ANDERSEN DECKER
- SLEEK INVEST CONSULT LTD.
- NAMINO YOUR PARTNERS (PTY) LTD.
- MGOBOYI CONSULTING (PTY) LTD.

MISSION

To provide world-class project financing services to a sustainably better future for our clients, our shareholders, and our society.

VISION

AUTOEASE will be a champion in all our target markets.

VALUES

- Customer confidence.
- Reliability, for our international expertise and global scale guarantee of strength and reliability.
- Transparency, our business is open and transparent to any institution, bank, or community with focus on partnership and cooperation.
- Versatility, our expertise in different project financing segments allows us to offer our clients with innovative, comprehensive, and sophisticated solutions.
- Team spirit, our dedicated team of professionals they benefits from the synergy of knowledge, potential, intuition and creative insight of each team member.

GLOBAL FOCUS

AUTOEASE GROUP is truly unique in its global focus. The depth of our projects development and finance teams enables us to field multiple teams simultaneously to handle the most complex transactions in any region or country.

We have full capabilities to execute transactions under different international laws, and we maintain close relations with leading independent firms in every other jurisdiction in which projects are undertaken or financed. Many of our professionals are fluent in multiple languages and are able to conduct negotiations and review documentation in languages other than English and Turkish.

Major Lines of Business

- Investment.
- Project Finance.
- Reinsurance and underwriting business.
- Innovative Economic Solutions.
- Investment Management for Large International Projects.
- Assets enhancement for large multinational business ventures.
- Turn-key technology supplier, developer and constructor.

INVESTMENT

One of our main functions includes the involvement with direct investments and loans, real estate development and consulting in many countries in the world with the knowledge and experience of proven products and services in the sector of multi-faceted professional business services.

AUTOEASE is also the mandate of many international leading finance banks and institutions; leading finance investment loans, project management, advisory financial and corporate legal services to the governmental and / or private sector projects.

Project Finance

Project finance is an innovative and timely financing technique that has been used on many high-profile corporate projects. Project financing discipline includes understanding of rationale for project financing, how to prepare the financial plan, assess the risks, design the financing mix, and raise the funds.

Autoease Group arranges finances for our clients on best terms and conditions since the company has deep knowledge and strong face value in various banks, private investment funds, corporate financing joint ventures & private shareholder funds from Turkey, France, United States of America, China, and many other parts of the world.

INVESTMENT BANKING SERVICES

AUTOEASE GROUP investment banking division assets clients & affluent individuals, businesses, and their owners, **investing institutions**, public sector entities, and dealers in accomplishing their financial goals. Our professionals strive to do whatever it takes to ensure that our clients reach their objectives.

- **Corporate Investment Banking:** the services include merger and acquisition advisory, restructuring (in-and out-of-court), board of director advisory, fairness and solvency opinions, business salvage and private capital raising, with an exclusive focus on middle-market transactions, our professionals offer our clients high quality investment banking experience and advice.
- **Public Finance;** our public finance group focuses on three primary capacities: debt management, capital restructuring, fixed income asset management and financial advisory.
- **Sales-Leaseback Capital;** our sale leaseback professionals can help you utilise this capital management tool that allows corporations to unlock significant pools of corporate capital tied up in assets and at the same time continue to use and control them.

CORE INVESTMENT AREAS

AUTOEASE GROUP combines strong legal skills with deep industry knowledge. We are regularly engaged in investment projects in diverse industries, including the following:

- **Oil and Coal**; including exploration, mining, production, storage, refining, gasification, and production platforms.
- **Power and Energy**; including thermal and renewable, as well as power transmission and distribution.
- **Infrastructure and Water Treatment**; including pipelines, potable water, desalination, wastewater treatment plants and waste disposal and recycling plants.
- **Space**: Satellites and Satellites services, UAVs, Telecommunications: including cellular cables, fixed and mobile phone networks.
- **Mining and Metals.**
- **Pulp and Paper.**
- **Transportation**: including airports, Airways, railways, roads, and sea shipping.
- Our South African Shareholders expertise extends to asset deposition, restructuring, portfolio securitisation, credit enhancement and political risk mitigation techniques.

CONSULTING SERVICES

AUTOEASE GROUP consulting division is comprised of the following groups:

- **Financial Consulting**, Business Assurance and Executive Benefits Strategies, with full spectrum of financial and investment advisory services.
- **Real Estate & Asset Based Investment Consulting**, our core services include Consulting and Funding for Asset Based & Real Estate projects. Value added services and new inventions are provided in collaboration with experts in the field.

OVERSEAS INVESTMENT LOANS/ISSUE OF INVESTMENT GUARANTEES

AUTOEASE FOREIGN INVESTMENT include overseas investment loans, investment guarantees, and involves risks such as abrupt shift in economic regulatory policy in the host country, fiscal collapse, or economic turmoil.

As a private lending institution, **AUTOEASE** seeks to mitigate such risks through the issue of the Bank Guarantee and negotiate with host country governments and its agencies & institutions. With respect to international project finance and humanitarian project funding,

AUTOEASE provides longer term private loan funding to assist private finance institutions that participate in co-financing, micro-finance provision; mainly under livelihood project investment loans.

OVERSEAS INVESTMENT LOANS/ ISSUE OF INVESTMENT GUARANTEES

AUTOEASE also requires the most essential smooth and methodological project implementation and monitoring process through professional measures including extending loans for infrastructure related projects, such as road and port facilities for transporting agricultural, industrial and other products. We also have Export Oriented private project funding loan schemes support the export of any plants and technology. Buyer credit to foreign importers is utilized for project finance.

A major portion of plan industry consists of small and medium-sized enterprises. The export of plants through their collective technologies, such as power generating facilities and communications facilities, can positively contribute to development of a broad spectrum of industries.

Although the provision of long-term financing to developing countries involves political risks that may arise from changes in domestic situations, export loans extension is well suited to deal with such risks.

1- BESPOKE RELATIONSHIP A PERSONALISED APPROACH

- " In terms of strategy and allocation (versus a standardized industry)
- " We can work with any external partners (no conflicts of interest)
- " In terms of costs and reporting (no hidden fees)
- " Taking into account the various different stages of your life.
- " From bankers who understand and share your concerns.
- " From experienced investment managers, there to listen (versus sell products) and backed up by a full local team.



2. WEALTH PLANNING SUPPORTING YOU IN YOUR LIFE GOALS

**YOUR
BANKER
DEVELOPS
BESPOKE
SOLUTIONS
TOGETHER
WITH YOU**

- Financial Planning
- Succession Planning
- Pension Planning
- Philanthropy
- Family Governance
- Tax-efficient
- Portfolio Management

So, you can
Plan
TODAY

What Will you
will need
TOMORROW

3 PORTFOLIO MANAGEMENT UNDERSTANDING YOUR OBJECTIVES TO SERVE YOU BETTER

❖ Your investment objective	❖ Size of your portfolio
❖ Return sought over the long-term	❖ Share of your assets
❖ Your risk tolerance	❖ Securities preferences
❖ Your time horizon	❖ Your tax regime
❖ Your tolerance for loss	❖ Your style and preferences



AN INTRODUCTION TO STRUCTURED PRODUCTS THE CREATIVE PART OF WEALTH MANAGEMENT

STRUCTURED PRODUCT CLASS AND INVESTMENT PROFILE

- Structured products aim to capture the performance of a chosen financial asset and to increase portfolio diversification over a period of time.
- Four classes exist: protection, Yield, Participation and Leveraged. The level of risk is adapted to the investor's tolerance thanks to full or partial protection of capital allowing a customized risk reward approach.
- Structured products are the ideal tool to express a tactical view on the markets, but they also provide access to opportunities (volatility, anti-inflation, currency, de-pegging, etc.) not readily available through traditional vehicles.
- Upon request, a structured product can be proposed within 24 hours to best capture market opportunities. We offer tailor-made solutions, with impartial and independent advice.

AN INTROCUCTION TO COMMODITIES

AN ASSET CLASS HAVING RECENTLY BENEFITED FROM INCREASED ATTENTION

- Commodities encompass both hard commodities (such as oil and precious metals) and soft commodities (which are grown, rather than mined, such as coffee and sugar).
- Investment in commodities can be made through different instruments ranging from commodity futures and index trackers, to investment funds or individual stock picks of companies active in commodities.
- Commodities are interesting to consider in any asset allocation as they offer a natural hedge
 - against inflation due to the long-term positive effect towards unexpected inflation.
 - Uncorrelated to equity and bond markets commodities have benefited over the past few years from supply demand imbalances, resulting from a lack of investment in capacity for years and strong emerging-market demand.



OUR APPROACH TO BUILDING ASSET ALLOCATION A ROBUST AND DISTINCTIVE RISK FRAMEWORK

The chart illustrates differing degrees of correlation of this asset class with a geographically diversified equity index.

- Are we playing yesterday a game a day too late?
 - No, our approach allows portfolios to be appropriately postponed for market upswings, while recognizing that large and frequent market declines are inevitable and must be planned for.
- Why doesn't everyone do this?
 - This approach requires a substantial data set and a great deal of complex calculation compared with the orthodox approach.
- What are the advantages and disadvantages?
 - Not reliant on forecasts, more accurately reflects the true nature of markets (frequent and large drawdowns with rising correlations in down markets), focuses on Drawdown risk versus volatility.
- Disadvantages:
 - Ranges of allocation, rather than fixed points, provide no natural benchmark.



Guiding Principles

- Respect the culture and spirit of the law of every nation and embark on open and fair business activities with a transparent and clear vision.
- Honour the society values and customs of every nation and contribute to the economic and social development through corporate activities ensuring sustainable achievements for their respective communities.
- Conduct our business to providing clean, clear and safe products and to enhance the sustainability of all such activities.
- Create and develop advanced technologies and provide outstanding products and services that fulfil the needs of our clients worldwide.
- Promote a corporate culture that enhances both individual creativity and the value of teamwork, while honouring mutual trust and respect between institutions and management of such entities.
- Pursue growth through synchronisation with the global community via inventive management skills.
- Work with business partners in financing and marketing to achieve stable, long-term growth and mutual benefits, while engaging ourselves open to new partnerships.

The CSR & Other Services

WE PROVIDE

- Needs Assessments
- Monitoring and Evaluation
- Advice on goal-cattig
- And indicators
- Planning support
- Facilitation to interactive group working
- Dialogue Coaching and team building
- Workshop design mediation training.

Humanitarian Aid And Development

Emergency Relief
Post-conflict Rehabilitation
Socio-economic Regeneration
Public Infrastructure Projects

Dialogue Development

Stakeholder Dialogue
Community Engagement
Conflict Transformation
Mediation

Organisational Development

Strategic Action Planning
Change Management
Partnership Working
Capacity Building

WE ENABLE

- Action Learning
- Project Cycle Management
- Stakeholder and
- Issues Analysis
- Strategy development and review
- Communication and Coordination logical Framework design and review
- Goal-Orientated Project Planning
- Management of Uncertainly means-Ends Analysis Participation.

Key Performance Indicators

AUTOEASE GROUP recognises, foresee, and accommodates the changing financial needs of its clients with a whole host of quality products and services. AUTOEASE works toward helping each of our clients in accomplishing their financial needs and desires. We endeavour to develop business relationships based on highest level of integrity, performance, and dedicated services.

During the past several years, AUTOEASE GROUP has:

- Become a leading project-based funding facilitator, negotiator, and provider of corporate investment funds, funds management services, with investment banking, funds, and exchange rate hedge strategies, private equity funding, currency management, real estate management and development, establishment of trusts and its business.
- Project Loan Investments; grown to be one of the South African based investment services and facilitator firm offering institutional fixed rate funding facilities to private clients, Investment Services, and International Advisory Services.
- Co-op with World leading banks and Insurance & Underwriting agencies.
- Grown as international project-based funding, investment banking, private shareholder capital provider.



PEOPLE

- AUTOEASE GROUP has grown since its inception in 1996 to become a primarily shareholder-owned, private company with highly professional employees in offices across Africa, Middle East, Oceanic, Soviet Socialist Republic, Australasia, Europe, Asia, and Latin America.
- Despite our vast intensification and intrinsic capabilities, integral to our thought processes and core values are those of personal attention and clear and transparent professional services with high level of team camaraderie.
- As an entrepreneurial project financing organization, we attract individuals committed to meeting their client's financial needs. Good value for investment offer is an important aspect of our corporate mission that is practiced through a wide range of civic and community involvement too.
- The leaders of each of our businesses are seasoned professionals with years of experience building relationships and meeting clients' needs.

SERVICES

AUTOEASE GROUP has recognized and attended its clients' changing financial needs with a large number of high-quality products and services. Our aim is to help each of our clients and meeting their needs. We strive to build ongoing relationships based on the highest levels of integrity, service, and performance.

Our Market Sectors:

- **Private Sector Institutions and Public Sector Entities:** we move to cover the demands of our institutional investors including personal funds, foundations, shareholders, JV Partners, and public sector entities to cover their capital needs.
- **Companies & Corporate Entities:** our professionals understand the needs of different companies and corporates and we know how to help them to run their needs.
- **Investment Advisors and Facilitators:** we tailor services and solutions carefully to match different specific needs; merging the trusted industry names with cutting-edge technology, our products and services aimed to reach the future vision of different customers' businesses.
- **International Clients:** with more than several billions in assets under our shareholders & coop partners in management and private funding programs, Autoease Group is constantly at the vanguard in creating pioneering and effective speculative solutions for clients all over the world.

SERVICE DELIVERY METHODOLOGY

AUTOEASE GROUP is offering Advanced Strategies for Investment Management of Projects

Our Market Sectors:

- **AUTOEASE GROUP advanced strategies** are widely known among the alternative asset managers. We have earned a good reputation for focused due diligence, portfolio construction, risk management and client services.
- **Private Equity;** AUTOEASE GROUP private equity finance offers both direct investment and fund in funds program, allowing the borrowers & investors the unique opportunity to divide their investment in their projects as they see fit. Our aggressive advantages fabricated in our strong experience, preferred access to deal flow, and our highly chosen procedure.
- **Currency Management;** AUTOEASE GROUP currency management business specialized in controlling currency rate fluctuation risk for institutional clients worldwide. Our submissive active and full nonrecourse return programs are geared among the most innovative in the industry.
- **Institutional Property Based Direct Investment Programme (Catalyst Capital Programme/ALS (Advanced Loan System)/IFDBS (Innovative Finance Distribution and Benefit System/PI² (Private Investor for Public Infrastructure));** AUTOEASE GROUP direct investments program provides institutional investors with access to compelling direct investment opportunities in the property/ asset-based market investment opportunities. We look forward to generate attractive returns on a risk adjusted basis by targeting only such lucrative opportunities in all phases of the asset's life cycle.

Projects

Infrastructure





Projects

Infrastructure



Projects

Housing



Projects

Hospitals





Projects

Roads



FINANCING THE RICH AND POOR

In the developing world, the lack of access to capital is a key issue holding back the progress of small businesses, particularly in the micro enterprises sector.

AUTOEASE GROUP works as a facilitator in reducing rural poverty through the use of innovative market development initiatives. The purpose is to transform market systems of agriculture sectors into competitive and pro-poor sectors that benefits rural producers.

The approach uses sector opportunities and address constraints so as to give rural producers better access to markets by providing adequate funds/capital for the underprivileged sectors.

The development objective of the rural livelihoods' development project of AUTOEASE GROUP is to establish effective institutional platforms of the rural poor that enables them to increase household income through sustainable livelihood enhancements and improved access to financial and selected public services.

Our project objective is to transform the role of the micro financing institutions to have access to low-cost funds with attractive terms.



MICRO - FINANCE AND HUMANITARIAN PROJECTS



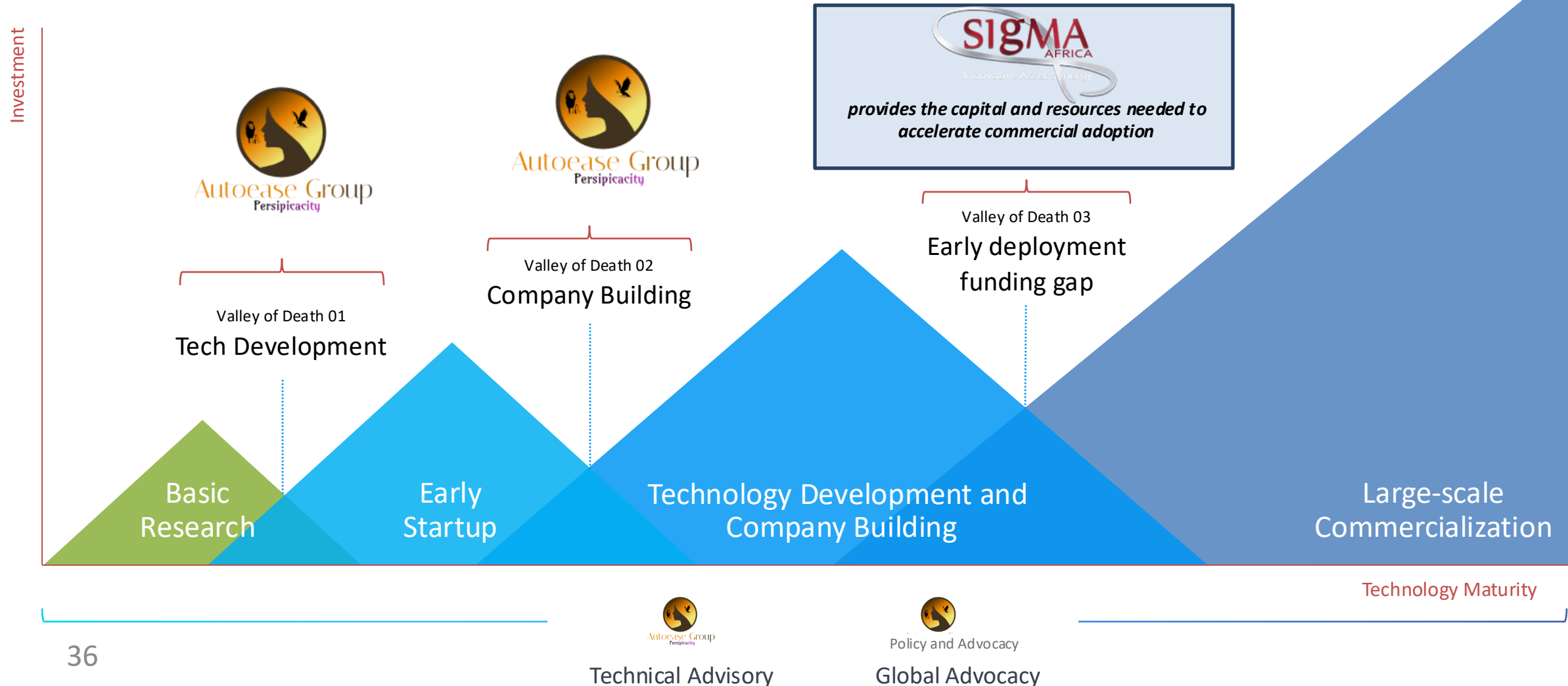
Micro Financing And Humanitarian Projects



AUTOEASE GROUP CATALYST

The Autoease Group network aligns technology, market, and policy expertise toward a collective goal of reaching net zero emissions. With this collaborative approach, our partners can access the diverse perspectives needed to address challenges across the commercialization journey.

Autoease Group has a comprehensive approach to accelerating climate innovation



AUTOEASE GROUP CATALYST

Catalyst Overview

01 Who is a part of Catalyst?



Convene a community of partners that each bring unique expertise:



Governments



Companies



Philanthropy



Individuals/Cooperatives



02 How does Catalyst help projects?



Provide direct project funding in the forms of:



Grant



Equity

Align the resources of our network and partners:



Organize offtake and market investment



Leverage AG's technology expertise



Bring diverse capabilities of the AG network



03 What does Catalyst fund?



Fund a portfolio of commercial demonstration projects, starting with:



Sustainable aviation fuel



Long duration energy storage



Direct air capture



Clean hydrogen



04 How does Catalyst measure success?



Measure program impact with a transparent tool to track key metrics:

- ❖ Reduction in **green premium** cost relative to fossil-based alternatives
- ❖ Calculation of **emissions** reduced/avoided by catalytic investments



HUMANITARIAN PROJECTS

Two criteria are required to be fulfilled in order for us to be able to assist a project owner, and for a project to qualify for the funding mechanisms to which we have access:

- The project must be classified as a qualifying project, as defined;
- The project owner must be able to provide, or have access to, Catalyst Capital as further described below.

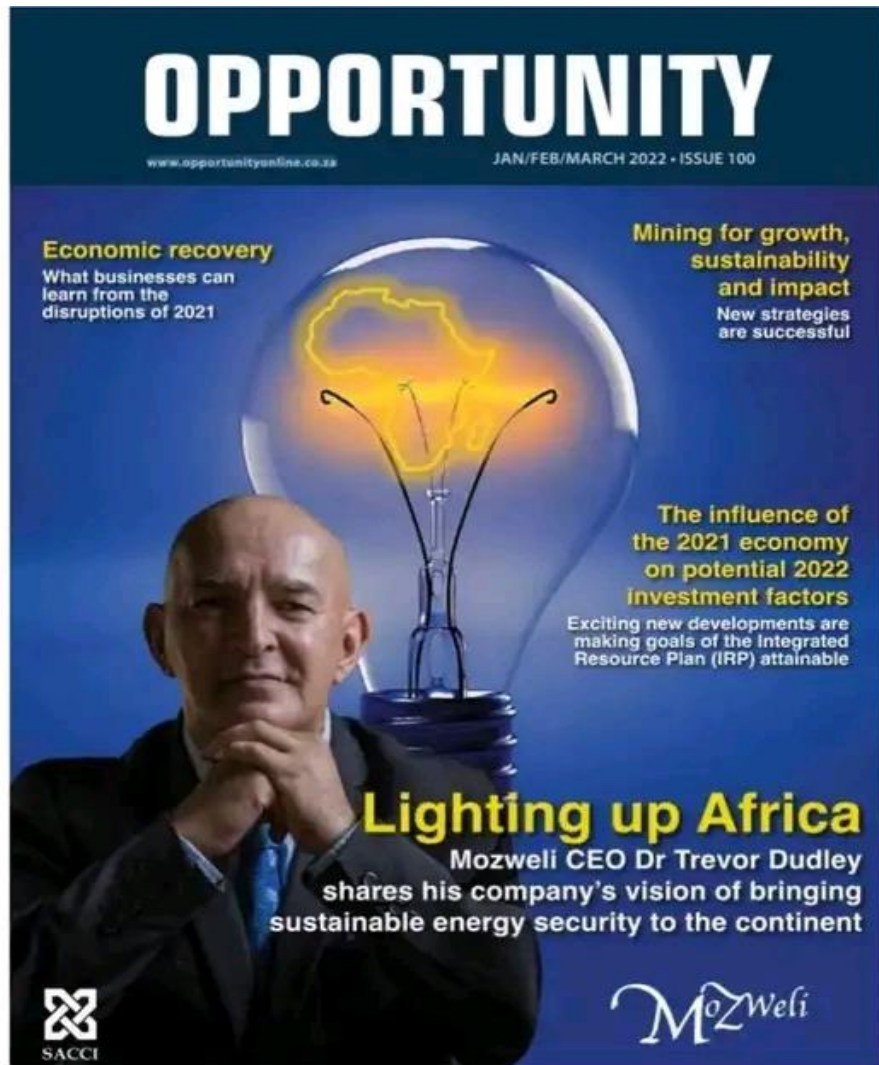
BENEFITS

On the basis that a project will contribute to one or more of the following, the project would be considered a qualifying project, as defined:

- ♠ social upliftment;
- ♠ job creation;
- ♠ job retention;
- ♠ community and economic rejuvenation;
- ♠ knowledge and skills transfer;
- ♠ health initiatives, disease control or primary health care;

- ♠ building of accommodation to replace slums, house government employees, students, etc;
- ♠ provision of clean water;
- ♠ provision of sanitation;
- ♠ provision of power (including alternative energy sources such as hydro, hydrogen power, hybrid power, nuclear power, solar power, TetraPower, wind power, Wireless Power,)
- ♠ solar and wind generated power);
- ♠ provision of education and related educational facilities;
- ♠ the creation of infrastructure required to support the specific project infrastructure in the form of Ground Transportation (Railway and Highways), Aerospace (Airports and Airlines), Aerotropolises, Data Cities, Smart Tourism Solutions and Agri City Projects, Smart Cities, housing, utility and other community related assets (such as, inter alia, schools, libraries, and primary health care facilities),

AUTOEASE GROUP CATALYST AGPL-Catalyst Partnership



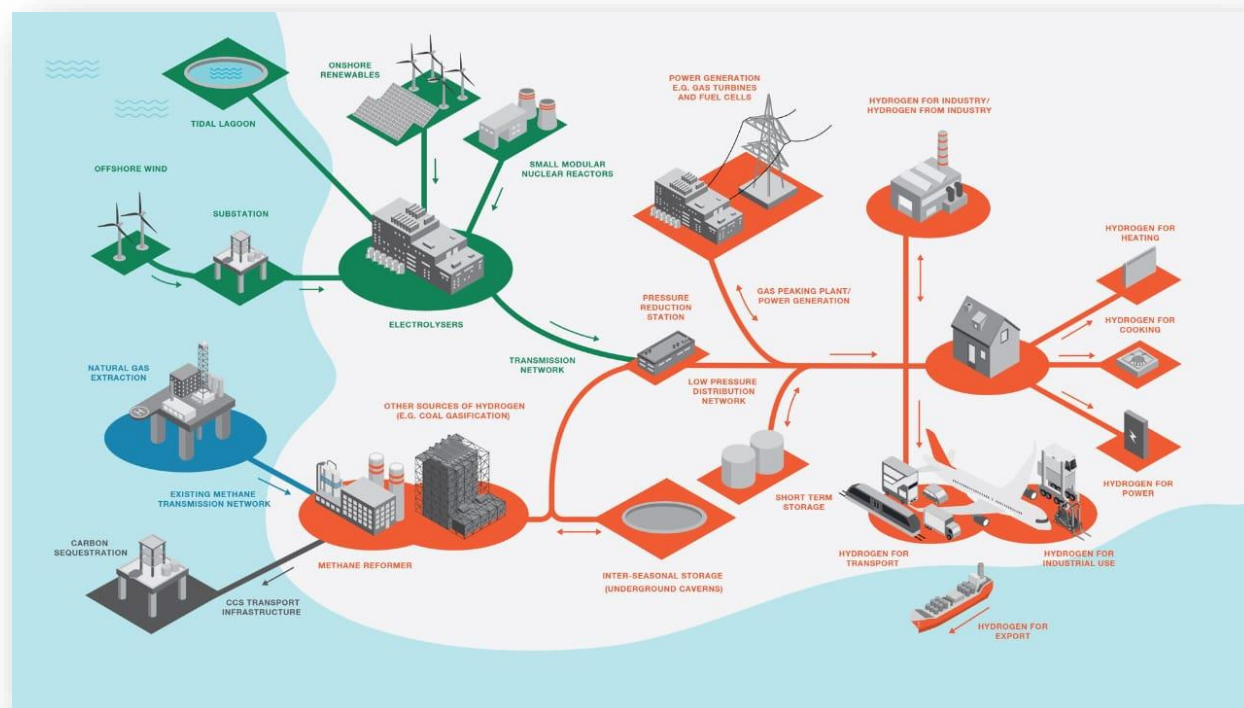
- Autoease Group-Catalyst partnership was the first public-private partnership announced by AGPL Catalyst, in June 2021
- Request for Proposals launched 11 January 2022
<https://www.autoeasegroup.wixsite.com/autoeasegroup/projects/>
- Partnership seeks to mobilise up to €820 BB for projects in AU between 2022 and 2027
- Autoease Energy Catalyst and the African Investment Bank will be established to provide matching funding to projects
- High-impact commercial scale projects in Clean Hydrogen, Long-Duration Energy Storage, Sustainable Aviation Fuels, Direct Air Capture
- Contact wellington@unleashafrie.com for questions or clarifications

GREEN ECONOMY

AGENDA FOR A NEW ECONOMY



**ECONOMIC
TRANSFORMATION
PROGRAMME**



GREEN ECONOMY



**AGENDA
FOR A NEW
ECONOMY**

**ECONOMIC
TRANSFORMATION
PROGRAMME**





Autoease Group
Persipacity

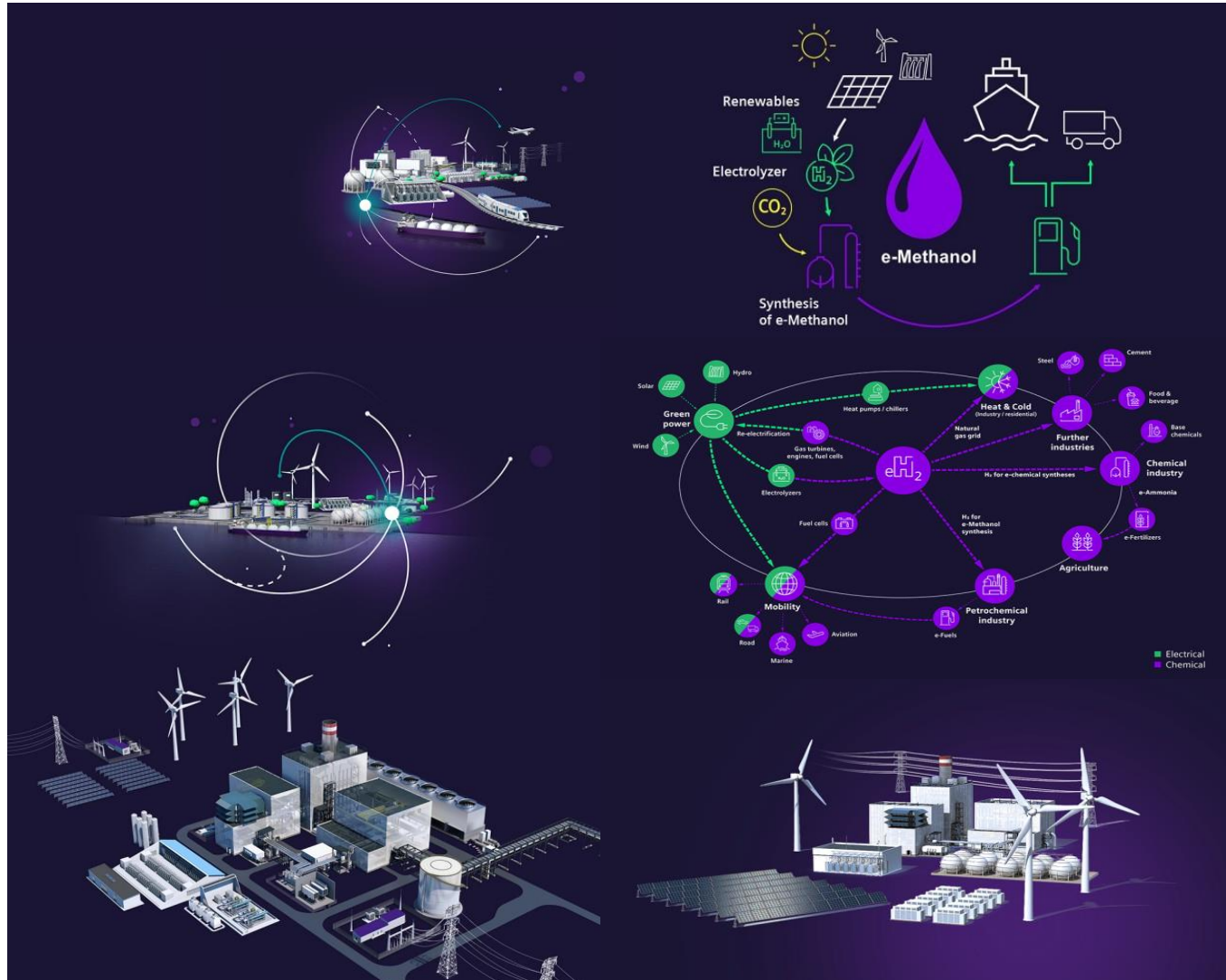
GREEN ECONOMY



GREEN ECONOMY



Autoease Group
Perspicacity



GIGA FACTORIES SETUP



Autoease Group
Persipacity



AUTOEASE AVIATION SERVICES



Autoease Group
Perspicacity





Autoease Group
Perspicacity

AGPL PEDI/P²I/PI² IMPLEMENTATION TEAM





Autoease Group
Perspicacity

AGPL PRESIDENT UNHCR HRPR 2015

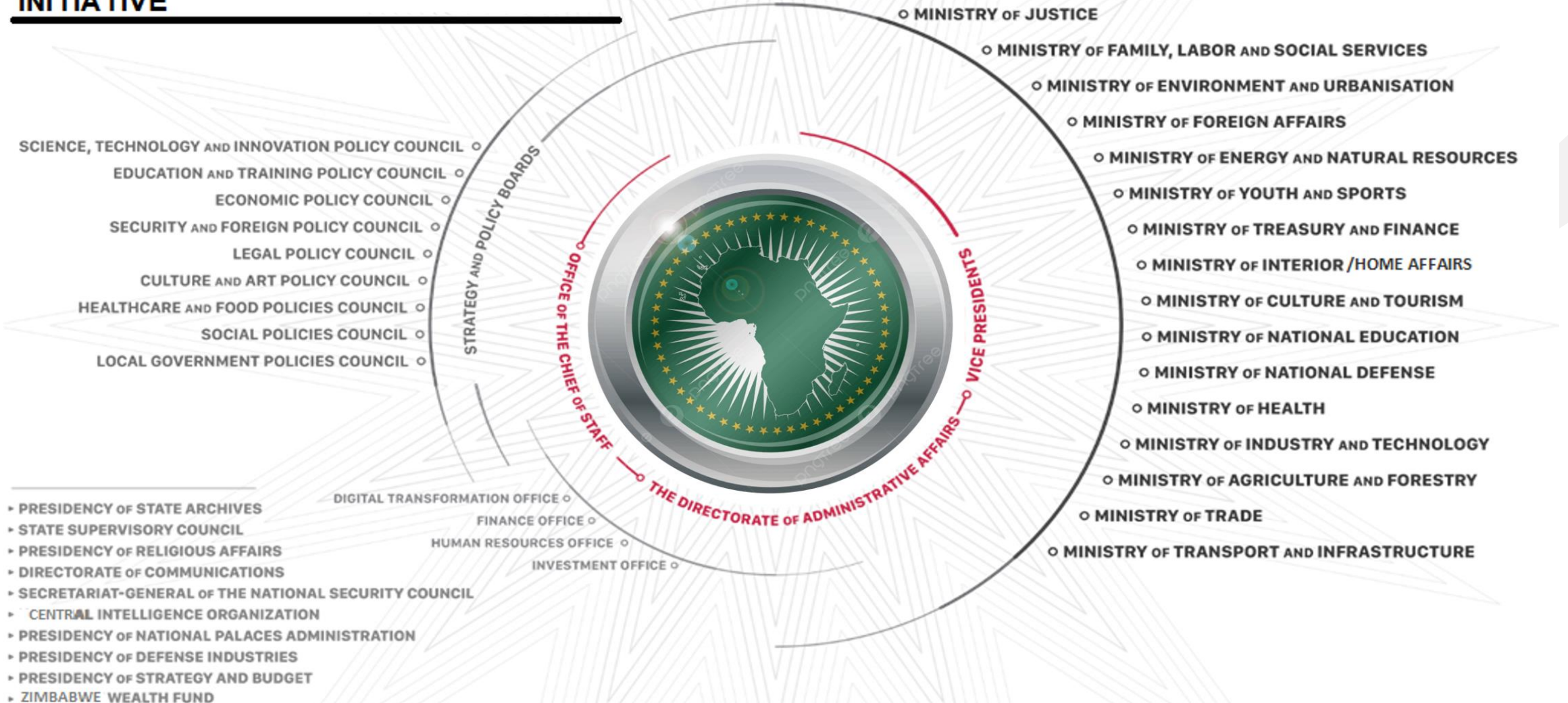


AUTOEASE GROUP PRESIDENT @SACCUF



ORGANISATIONAL STRUCTURE FOR PEDI

ORGANISATIONAL STRUCTURE OF PRESIDENTIAL ECONOMIC DEVELOPMENT INITIATIVE





REGISTRATION DOCUMENTS FOR SOME AUTOEASE COMPANIES

Certificate issued by the Commissioner of Companies & Intellectual Property Commission on Sunday, July 19, 2020 at 7:30

COR14.3: Registration Certificate

Registration Number: 2018/446421/OT
Enterprise Name: AUTOEASE GROUP

ENTERPRISE INFORMATION

Registration Number: 2018/446421/OT
Enterprise Name: AUTOEASE GROUP
Registration Date: 21/06/2018
Business Start Date: 21/06/2018
Enterprise Type: Private Company
Enterprise Status: In Business
Financial Year End: August
VAT Number: 306402522
Address: POSTAL ADDRESS: 5072 DIPHONO STREET ZONE 8, TUMAHOLE, PARYS, FREE STATE 5085

ADDRESS OF REGISTERED OFFICE

5072 DIPHONO STREET ZONE 8, TUMAHOLE, PARYS, FREE STATE 5085

ACTIVE MEMBERS / DIRECTORS

Surname and First Names	Type	ID Number / Date of Birth	Appointment Date	Address
MABELA WELLSHOFF WELLSHOFF	Director	45711015-12018	21/06/2018	PO BOX 2070 DIPHONO STREET ZONE 8, TUMAHOLE, PARYS, FREE STATE, 5085
STANLEY SHWARTZ	Director	8009402007	11/06/2018	PO BOX 1700 DIPHONO STREET ZONE 8, TUMAHOLE, PARYS, FREE STATE, 5085
WELLSHOFF WELLSHOFF	Director	790403004	16/06/2018	PO BOX 1000 DIPHONO STREET ZONE 8, TUMAHOLE, PARYS, FREE STATE, 5085
MARIEBETH STEPHANUS JOHANNES MARIEBETH	Director	19811118-12018	16/06/2018	PO BOX 4 PRETORIA STREET, PARYS, FREE STATE, 5085

Page 1 of 3

Physical Address: 4th Floor, 77 Marais Street, Sandton 2001
Postal Address: 4th Floor, 77 Marais Street, Sandton 2001
Phone: 011 551 1111
Fax: 011 551 1111
Website: www.autoease.co.za
Company Number: 2018/446421/OT
Company Name: AUTOEASE GROUP



Certificate issued by the Commissioner of Companies & Intellectual Property Commission on Sunday, July 19, 2020 at 7:31

COR14.3: Registration Certificate

Registration Number: 2018/446421/OT
Enterprise Name: MY CITY INVESTMENTS

ENTERPRISE INFORMATION

Registration Number: 2018/446421/OT
Enterprise Name: MY CITY INVESTMENTS
Registration Date: 17/06/2018
Business Start Date: 17/06/2018
Enterprise Type: Private Company
Enterprise Status: In Business
Financial Year End: December
VAT Number: 306884208
Address: POSTAL ADDRESS: 5072 DIPHONO STREET ZONE 8, TUMAHOLE, PARYS, FREE STATE 5085

ADDRESS OF REGISTERED OFFICE

5072 DIPHONO STREET ZONE 8, TUMAHOLE, PARYS, FREE STATE 5085

ACTIVE MEMBERS / DIRECTORS

Surname and First Names	Type	ID Number / Date of Birth	Appointment Date	Address
STANLEY SHWARTZ	Director	8009402007	11/06/2018	PO BOX 1700 DIPHONO STREET ZONE 8, TUMAHOLE, PARYS, FREE STATE, 5085
MABELA WELLSHOFF WELLSHOFF	Director	45711015-12018	21/06/2018	PO BOX 2070 DIPHONO STREET ZONE 8, TUMAHOLE, PARYS, FREE STATE, 5085
STANLEY SHWARTZ	Director	8009402007	11/06/2018	PO BOX 1700 DIPHONO STREET ZONE 8, TUMAHOLE, PARYS, FREE STATE, 5085
STANLEY SHWARTZ	Director	8009402007	11/06/2018	PO BOX 1700 DIPHONO STREET ZONE 8, TUMAHOLE, PARYS, FREE STATE, 5085

Page 1 of 3

Physical Address: 4th Floor, 77 Marais Street, Sandton 2001
Postal Address: 4th Floor, 77 Marais Street, Sandton 2001
Phone: 011 551 1111
Fax: 011 551 1111
Website: www.autoease.co.za
Company Number: 2018/446421/OT
Company Name: AUTOEASE GROUP



REGISTRATION DOCUMENTS FOR SOME AUTOEASE COMPANIES

Receipt NO. 90149639 ORIGINAL COPY

No. 2607/2017 USD20 N° 148474



ZIMBABWE

Certificate of Incorporation

I hereby certify that AUTOEASE COMMUNICATIONS (PRIVATE) LIMITED

is this day incorporated under the Companies Act [Chapter 24:03] and that the Company is Limited.

Given under my Hand and Seal at HARARE

this 19TH day of APRIL 2017

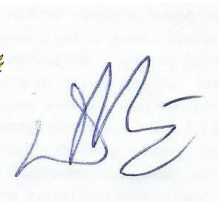
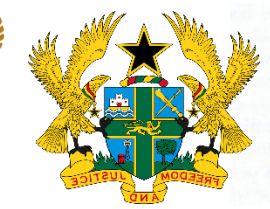

Registrar of Companies



THANK YOU

✉ wellington@unleashafriecancons.org

🌐 <http://autoeasegroup.wixsite.com/autoeasegroup>





Autoease Group
Perspicacity



AUTOEASE GROUP

<http://autoeasegroup.wixsite.com/autoeasegroup>



Thank You

