



YSZ
PROJECTS

**COMPANY REGISTRATION:
2020/ 570447/07**



WWW.YSZPROJECTS.CO.ZA
(+27) 076 808 4962
INFO@YSZPROJECTS.CO.ZA



Ysz Projects (Ppty) Ltd, has been established to form part of Facility Management Services.

The expertise and experience we offer is based on the industry's standards, as your trusted partner, we are assuring you of an excellent workmanship from the start of the project until the turnover of the project.



COMPANY BACKGROUND

Ysz Projects (Pty) Ltd, has a clear strategy of using its collective skills and understanding of markets to develop a unique value proposition to clients on a national level.

We are a group of dependable professionals who will render outstanding services. Strategically positioning quality services and management at the heart of our operations, by providing a full one window service as per the client's requirements and company logistics service.



Managing Director
Yusuf Pandy

At Ysz Projects (Pty) Ltd, we are known for excellence in a diverse range of markets. Our extensive experience in each and every realm is driven by the breadth and depth of our qualified teams, all who take pride in doing the best possible job for our clients.



OUR VALUES

Ethics

We are uncompromising in our integrity, honesty and fairness.

Quality

We are passionate about excellence and doing our work right for the first time

Sustainability

We improve the quality of life in communities where we work by respecting local cultures, engaging local people, and protecting the environment.

Relationships

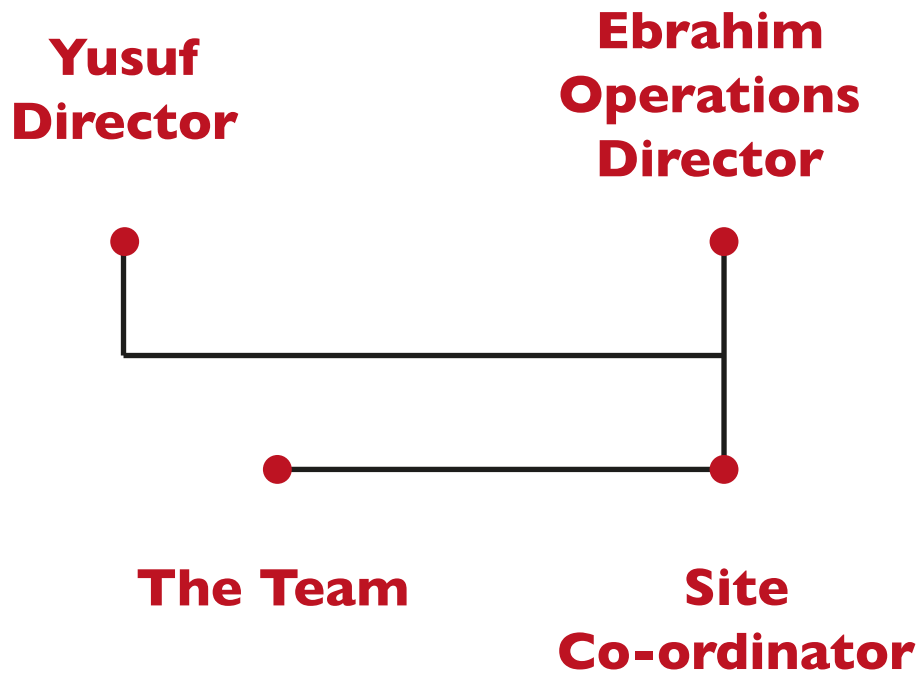
We build positive, long-term relationships with our clients, joint-venture partners, subcontractors, suppliers, and colleagues that are built on trust, respect, and collaboration.

Safety

We are relentless in keeping our staff safe from harm.

Innovation

We develop, listen, learn, and seek out the best ideas to attack complacency and continually improve.



Facility maintenance is our process of increasing the utility of your property by regularly servicing capital assets, commercial appliances, and areas inside or around the property...

Using only maintenance application that is closely related to facility maintenance and building maintenance.



We specialize in full turnkey Property Maintenance . Whether it be maintenance, project management, full turnkey maintenance, retail outlets or home renovations, our highly skilled team can tackle any project on time and within budget.

We have been in the maintenance and contracting business for close to 7 years and have the experience and expertise to deliver on time every time.

We have strong values and a future vision for our company. Browse through our online platforms.

Services

- Renovations
- Tiling
- Plumbing
- Ceilings
- Electrical
- Painting
- Rubble removal
- Facility Management
- General maintenance
- Refurbishing
- Supply

Facilities

- Building Maintenance
- Landscape
- Demolition
- TurnKey Solution
- Alterations
- Plumbing
- Cleaning Services
- Deep Clean Water Pressure
- Security/ Alarm/
- CCTV Networking
- Airconditioning
- Refurbishments
- Project Management
- Printing
- Consumables supplies

PREVENTATIVE MEASURES YOU MUST TAKE:

- You must be “competent” to carry out the task.
- You must not lift beyond your capabilities, get help if necessary
- You must ensure the safety of other contractors and members of the public
- Visitors and other members of staff are prohibited from entry to the work area
- You must follow all directions given by the project manager or his agents

THE MAIN HAZARDS TO YOUR SAFETY AND HEALTH ARE:

- Fall from height
- Hand Injury
- Chemical irritation
- Slips & Trips
- Splinters from working with wood
- Exposure to inclement weather
- Injury to other staff and members of the public during operations noise

ENVIRONMENTAL PROTECTION MEASURES

- You must dispose of all waste to a designated waste area

PERSONAL PROTECTIVE EQUIPMENT YOU MUST WEAR:

- Overalls
- Hard hats
- Safety boots
- Hi Visibility Vests
- Safety
- Gloves
- Face mask

QUALITY CONTROL

- Overalls
- Hard hats
- Safety boots
- Hi Visibility Vests
- Safety
- Gloves
- Face mask



METHOD STATEMENT

PREPARATION & INDUCTION

All members of staff required to work on any contract will be given copies of risk assessments and method statements, any queries or concerns will be raised with the contract manager who will ensure it is dealt with. Staff will be inducted onto each site by the principle contractor or contract manager, and will follow all site rules and safety procedures.

PPE

All site workers will wear Safety boots, protective clothing, Hi Visibility vests, Hard Hats and eye protection at all times, other items of PPE such as and gloves are available to be worn as and when necessary.

STAFF & TRAINING

The task will be carried out by staff from Isfam General Trading. All staff and contractors are time served tradesmen. Apprentices and workers will be supervised and are not allowed to carry out tasks for which they have not been trained. The site foreman for Isfam General Trading is responsible for identifying any further training requirements and ensuring they are carried out.

SITE ACCESS AND EGRESS

The principle contractor is responsible for maintaining safe access and egress to and from the site. Staff and visitors are required to park in a designated car park and enter the work area via a normal access path which is kept clear of any stock, spoil or debris. Visitors will not be allowed on site unless accompanied and issued with the appropriate PPE. The work area will be marked with safety tape; signage will be erected on site to warn other contractors of works.

MATERIAL HANDLING

All materials required for site will be unloaded to a designated unloading and storage area away from the work area. This area will be kept tidy to minimize trip hazards. Materials as and when required will be collected from the storage area to the work area. All staff will take care when handling materials

WELFARE

The principle contractor is responsible for providing adequate washing, toilet, drying and refreshment facilities for, staff and contractors are responsible for ensuring that such welfare facilities are maintained in a clean and wholesome manner.

MANUAL HANDLING

All staff and contractors have been instructed on the potential dangers of manual handling, and have received manual handling training. Staff and contractors will not lift items of tools or equipment beyond their capabilities. or awkward items will be broken down into smaller pieces or dual lifted where this is not possible. It is the responsibility of the site foreman to identify and control potentially dangerous manual handling situations as they occur on site on a day to day basis.



WEATHER/ NOISE

INCLEMENT WEATHER

The Senior HSE officer (Client) is responsible for suspending work if weather conditions make the task unsafe ensure safety of electrical equipment in wet weather as unsuitable equipment can easily become live and make its surroundings live. Take account of weather conditions, wear appropriate clothing and take plenty of water cover up or apply sun block to prevent sunburn.

NOISE

Where noise levels are likely to be above 80 dB(A) the competent person must carry out a noise assessment and the employer must provide hearing protection if asked for by employees ,Where noise levels are likely to be above 85 dB(A) the employer must reduce the exposure to noise of employees other than by the provision of hearing protection.

INCLEMENT WEATHER

All employees have been made aware of the dangers and consequences of falling from height, all working at height will be properly planned, organized and supervised; only competent members of staff will be allowed to work at height and it is the responsibility of the site foreman to ensure conditions are safe before allowing any work at height to take place. The foreman will carry out a risk assessment before carrying out work at height and put in place equipment and measures to prevent falls occurring. Where he cannot eliminate the risk of a fall he will put in place measures and equipment to minimize the distance and consequences of a fall, should one occur.

WORKING FROM LADDERS/STEP LADDERS

All staff have been made aware of the dangers of working from ladders and have been instructed on the safe use of ladders. Only competent members of staff will be allowed to work from ladders, any ladder work will be of light work and short duration. It is the responsibility of the site foreman to ensure conditions are safe before allowing any ladder work to take place.

Falls from height remain the single biggest cause of death in the construction industry. All company equipment will be inspected on a regular basis and any damaged equipment will be withdrawn from service immediately.



Al Jazeera Tourism
Full turnkey solution and projection management for new offices
Location:
Kromboom road



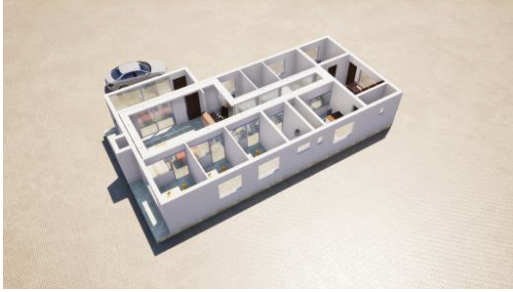
Removing of existing soft and hardscapes
interior and exterior painting and waterproofing
Location: Plumstead



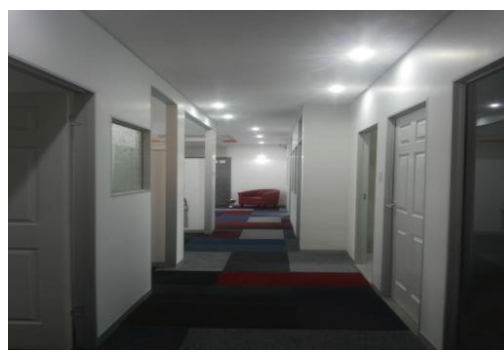
Complete renovation to Villa Alexander
Location: Newfields



South African Bureau of Standards (SABS) Office building
Waterproofing a section of the roof above main
Entrance Sub Contractor for Cuecon Project
Location:
Mowbray Cape Town



ALJEM OFFICE RENDER



HERBENIA
APARTMENT
RENDER

