

## LINACT-G2 - Robust DC Linear Actuator

- Typical Applications: Off-Road Vehicles, Agriculture Machines and Solar Panel Tracker Systems
- DC Permanent magnet motor
- Speeds from 6.5mm/s up to 38mm/s
- Standard Stroke length: 100 - 700mm

### Mechanical Data

- Operating temperature -40°C~+65°C
- Trapezoidal Screw
- Protection – IP66
- Standard Voltage: 12, 24, 36, 48Vdc
- Fixed Limit Switches
- Overload Clutch Protection
- Ball Screw *Optional*
- Potentiometer feedback *Optional*
- Hall Feedback *Optional*
- Manual Hand Crank *Optional*
- CE Certified



### Force Data

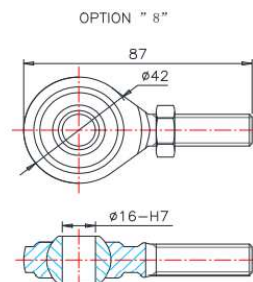
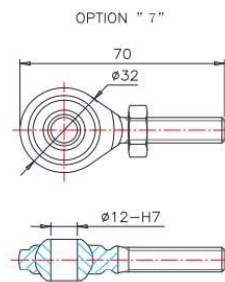
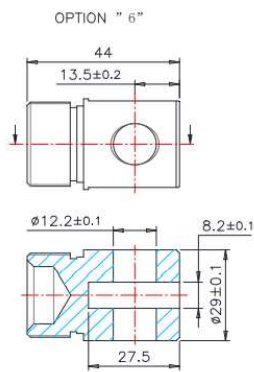
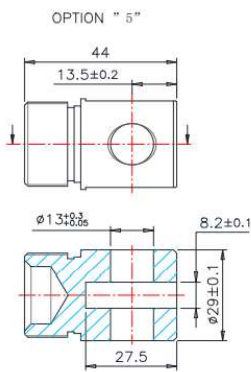
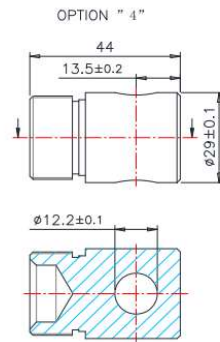
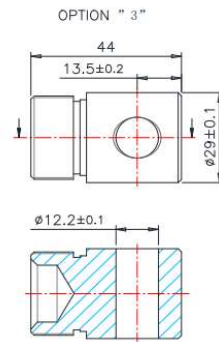
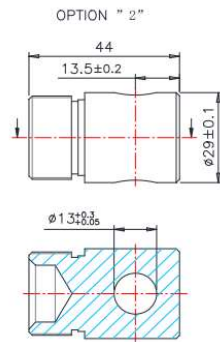
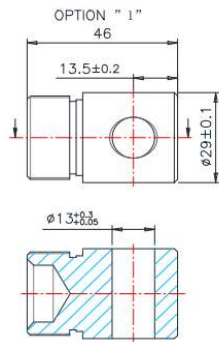
- Max Load – up to 12 000N (1 200Kg)

### Transmission Parameters

code	gear ratio	pitch (mm)	speed without load mm/S	speed with full load mm/S	max load (push/pull) N	self-lock N	no load amp A		full load amp A		potentiometer (bourns 0-10K ohm A 5%, 10-turn)
							12V	24V	12V	24V	
A	40:1	4	6.5	4.5	12000	15000	4.0	2.4	20	10.5	176 mm eg: 100mm stroke=5.7KΩ
B	30:1		8.5	6	11000	12000	4.0	2.4	20	10.5	
C	20:1		13	9	7500	9000	4.0	2.4	20	10.5	
D											
E	40:1	8	13	7	10000	12000	4.0	2.4	20	10.5	352 mm eg: 200mm stroke=5.7KΩ
F	30:1		17	9.5	7000	8000	4.0	2.4	20	10.5	
G	20:1		25	14	5000	6000	4.0	2.4	20	10.5	
H											
I	40:1	12	20	11	6500	8000	4.0	2.4	20	10.5	528 mm eg: 500mm stroke=9.4KΩ
J	30:1		25	13	4500	5500	4.0	2.4	20	10.5	
K	20:1		38	24	3200	4000	4.0	2.4	20	10.5	
L											

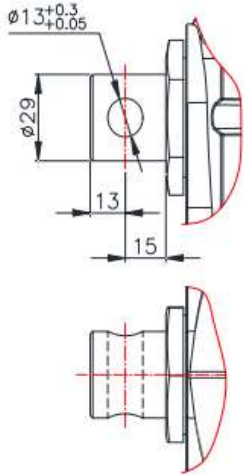


## Front End Options

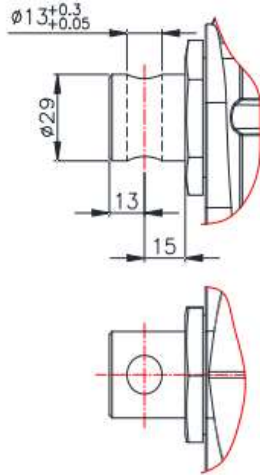


## Rear End Options

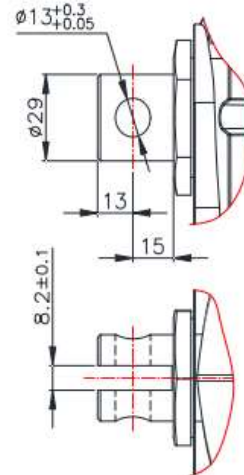
OPTION " 1"



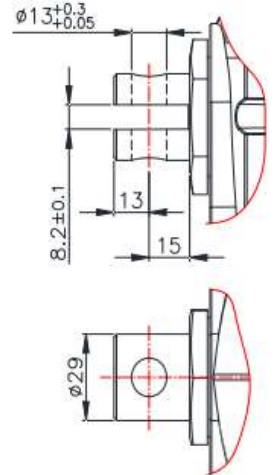
OPTION " 2"



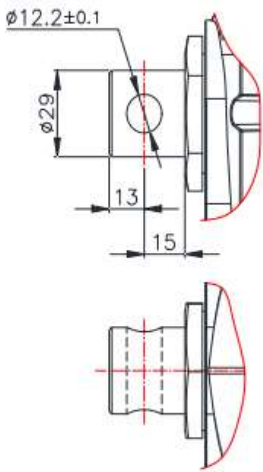
OPTION " 3"



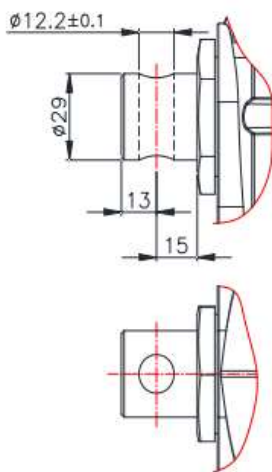
OPTION " 4"



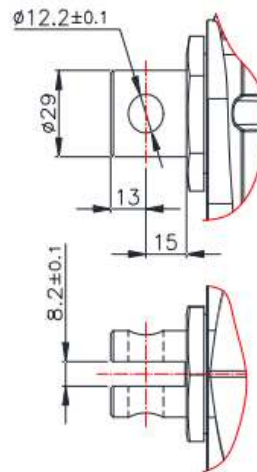
OPTION " 5"



OPTION " 6"



OPTION " 7"



OPTION " 8"

