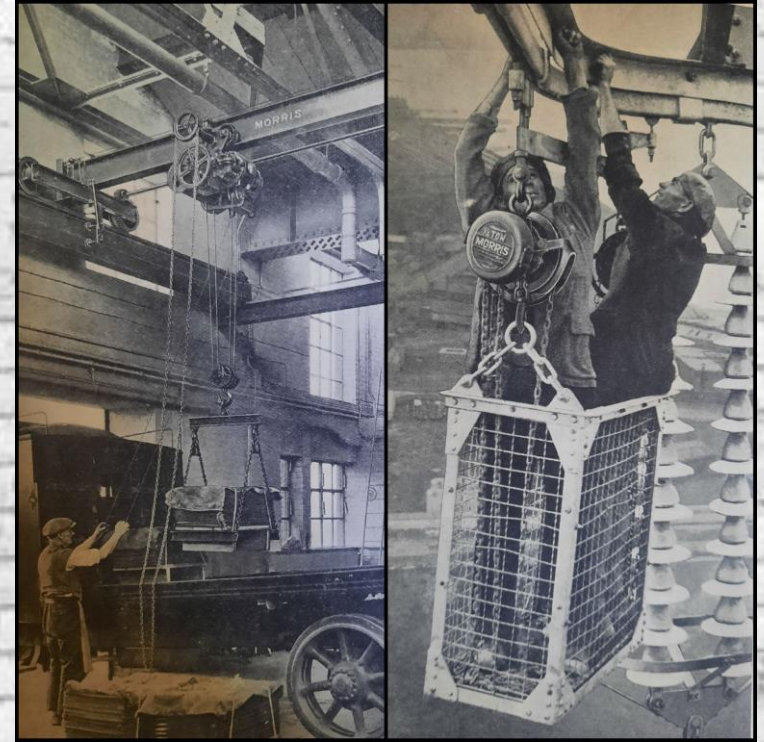
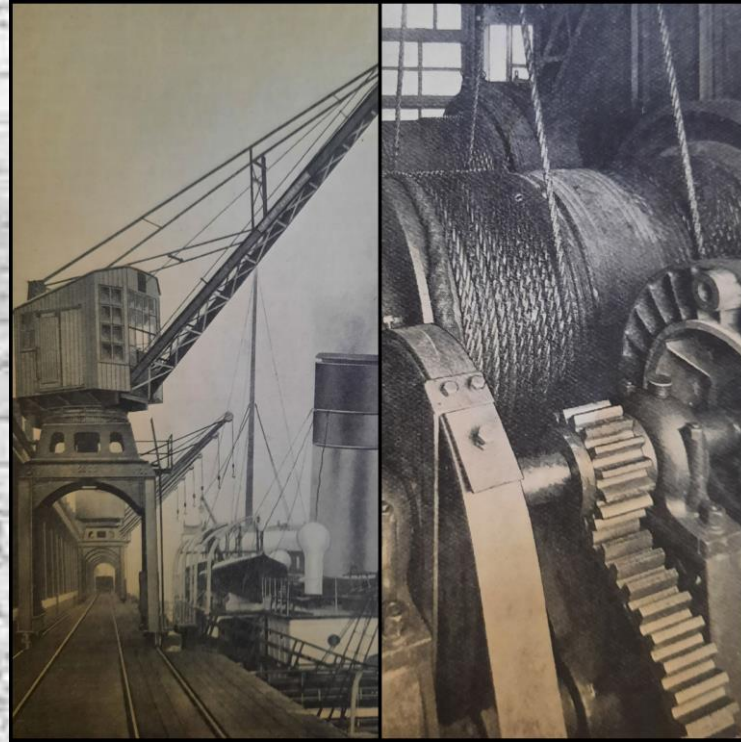
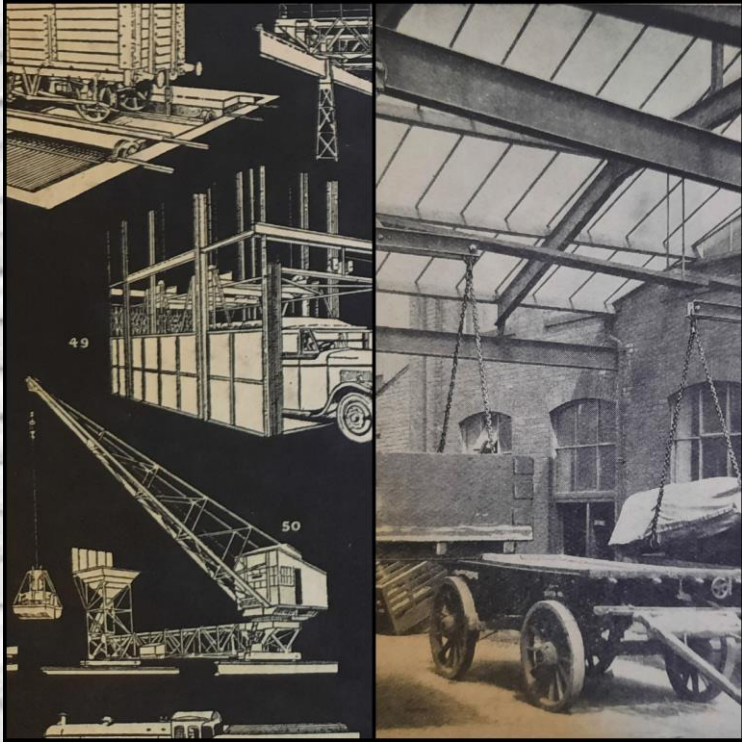




LSWA

LS WEST AFRICA (Pty) Ltd

**MINING AND
CONSTRUCTION
FOR AFRICA**



SPEED, ECONOMY, STRENGTH AND SAFETY HAS ALWAYS BEEN A PREREQUISITE

LS WEST AFRICA (Pty) Ltd

.....A TOTAL LIFTING, RIGGING, LASHING AND CONVEYING SOLUTION

A COMPLETE RANGE OF QUALITY PRODUCTS

- SUPPLY NEW LIFTING TACKLE AND EQUIPMENT, ALSO INSPECTION, REPAIR, LOAD TESTING AND CERTIFICATION
- DESIGN & MANUFACTURING OF CONCRETE BANANA BUCKETS, BRICK CAGE COMPLETE WITH STEEL PALLETS, MAN CAGES, LOADING PLATFORM, etc
- DESIGN & MANUFACTURING OF LIFTING STEELWORKS.
- CONSTRUCTION, FORMWORK & SCAFFOLDING ACCESSORIES
- MOBILE OUTRIGGER PADS

LIFTING

RIGGING

LASHING

CONVEYING

LS West Africa (Pty) Ltd render a unique combination of Products and Services for All Industries.

A TURNKEY SOLUTION - Design, Manufacture and Maintenance of Equipment.

LS West Africa (Pty) Ltd is exploring AFRICA and mainly focused on the Mining and Construction Industry. We will endeavour to deliver excellent products and adhere to all your commands and requirements.

LS WEST AFRICA FOR LIFTING TACKLE & EQUIPMENT

CHAIN & CHAIN SLINGS

STEEL WIRE ROPE & SLINGS

CHAIN HARDWARE



ROPE BLOCKS

WIRE ROPE SNATCH BLOCKS, CARGO BLOCKS, SHEAVE WHEELS, MANILLA ROPE BLOCKS

RIGGING HARDWARE

TURN BUCKLES, DROP-FORGED EYEBOLTS & NUTS, LARGE EYE AND SWIVEL HOOKS, FOUNDRY HOOKS, SELF LOCKING HOOKS, LASHING CHAIN AND LEVER TYPE LOADERS FOR TRANSPORTING, SHACKLES

HOISTING/LASHING/SAFETY EQUIPMENT

MANUAL CHAIN & LEVER BLOCKS, ELECTRIC CHAIN AND ROPE HOISTS, AIR HOISTS, WIRE ROPE PULLING MACHINES, DRUM LIFTERS, BEAM CLAMPS, DRUM LIFTERS, PLAIN AND GEARED CRAWLS, PLATE GRABS, SAFETY HARNESSES SINGLE AND DOUBLE LANYARDS WITH SNATCH HOOKS OR SCAFFOLDING HOOKS, HAND WINCHES, ELECTRICAL AND AIR WINCHES TIRFORS, TURNBUCKLES, MANILLA ROPE, FALL ARRESTORS, HORIZONTAL LIFE LINES, PALLET CRANE FORKS

WEBBING

ENDLESS ROUND AND FLAT WEBBING SLINGS



LS WEST AFRICA FOR QUALITY YALE PRODUCTS TO SELECTED COUNTRIES

HAND PALLET TRUCKS
LEVER & CHAIN HOISTS
ELECTRIC CHAIN HOISTS
PNEUMATIC CHAIN HOISTS
JACKS
CABLE GRIPS & PULLERS
HOISTING EQUIPMENT
TIGRIP LOAD HOISTING TACKLE
BEAM CLAMPS
ELECTRIC & PNEUMATIC WINCHES
HYDRAULIC CYLINDERS



LS WEST AFRICA FOR QUALITY LIFTKING PRODUCTS

CHAIN BLOCKS
CHAIN HOISTS & TROLLEYS
ELECTRIC MOTOR TROLLEY
ACCESSORIES
LEVER & CHAIN HOISTS
ELECTRIC CHAIN HOISTS
PNEUMATIC CHAIN HOISTS
LOAD LIMITER



LIFTKING SERIES
— ELECTRIC CHAIN HOISTS —

SUPER-12[®] STROP

12-STRAND UHMWPE STROP

With Soft Eyes & Protective Cover

APPLICATIONS

- ▶ Vehicle recovery
- ▶ Vehicle towing

FEATURES

- ▶ Extreme strength-to-weight ratio
- ▶ Lightweight and flexible for easy handling
- ▶ Safer than wire (low recoil)
- ▶ Low elongation
- ▶ High abrasion resistance
- ▶ Heavy duty cover braid on eyes and body to protect against wear and grit ingress
- ▶ Certified tonnage rating
- ▶ Traceable ID tags

TECHNICAL

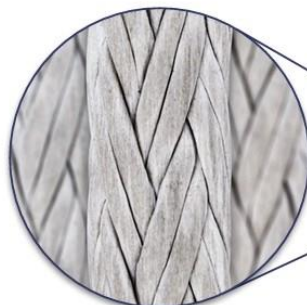
- ▶ Ultra-high molecular weight polyethylene core
- ▶ Polyester-covered eyes
- ▶ Nylon-covered body (30 □ 350 t)
- ▶ Polyester tubular webbing body (400 □ 500 t)

OPTIONS

- ▶ Higher break loads
- ▶ Length to order
- ▶ Eye sizes to order (250 mm standard)
- ▶ Colours (pink body and black eyes standard)
- ▶ Thimbles
- ▶ Proof loading with certificate



Heavy Duty Polyester Cover Braid
Protects from Wear & Tear



Extreme Strength from
Super-12[®] Core



Traceable ID Tags

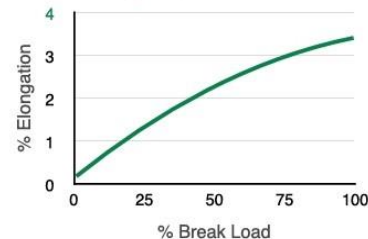
LS WEST AFRICA

SUPER-12[®] STROP

FIBRE PROPERTIES

Fibre Type	Density	Sensitive to	Resistant to	Melting Point	Elongation at Break
UHMWPE	0.97 g/cm ³	Strong oxidising agents, chlorosulphonic & nitric acids at high temperatures	Most acids, alkalis, alcohols, esters, organic solvents & bleaches	152°C	3.5%
Polyester	1.38 g/cm ³	Alkalis, phenolic compounds, sulphuric acid	Most organic acids & solvents & oxidising agents	255°C	15%
Nylon	1.14 g/cm ³	Acids & strong oxidising agents	Alkalis & organic solvents	220°C	23%

Elongation vs Break Load



Tension Fatigue



CONSTRUCTION & MINING VEHICLE RECOVERY APPLICATIONS

Break Load (t)	Vehicle Recovery, GVW (t)			Gradient Towing, GVW (t)		
	General Muddy Conditions	Moderate Conditions	Severe Conditions	6° (1:10)	11° (1:6)	18° (1:4)
30	60	30	20	120	64	41
50	100	50	35	201	106	68
70	140	70	50	281	148	95
100	200	100	70	401	212	135
150	300	150	100	602	318	203
200	400	200	140	803	424	271
250	500	250	170	1004	529	338
300	600	300	200	1204	635	406
350	700	350	245	1405	741	474
400	800	400	280	1606	847	541
450	900	450	315	1807	953	609
500	1000	500	350	2007	1059	676

Disclaimer: Data provided as a guide only.

LS WEST AFRICA FOR SCAFFOLDING MATERIAL & ACCESSORIES

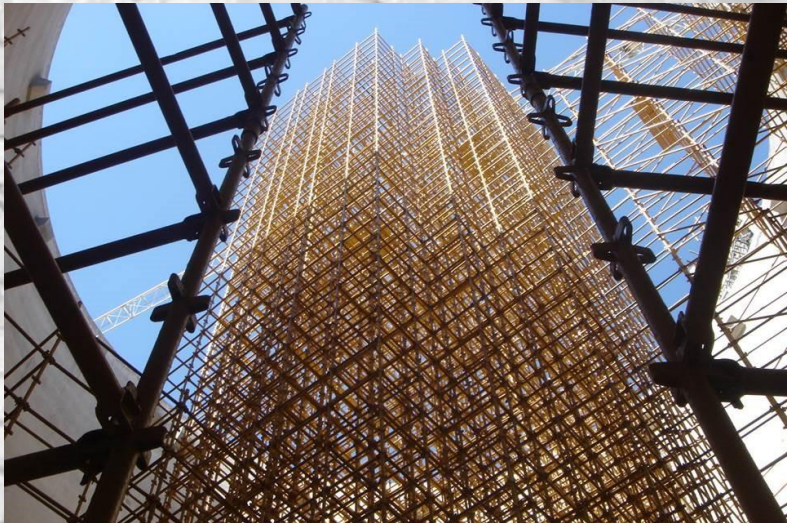
QUICKSTAGE / QUICKLOCK / FORMWORK

Supplied according to customer specifications and needs. Specialising in ALL types of scaffolding:

ACCESS – HANGING- INDEPENDENT – STATIC – BIRD CAGE – BURROW – STAGE SCAFFOLDING

Scaffolding Staff comprise of qualified and CETA accredited:

ERECTORS – INSPECTORS – SUPERVISORS – SHE REPS



HIRING SERVICES – HIRE & ERECT – MINING SPECIFIC

LS WEST AFRICA FOR MOBILE OUTRIGGER PADS

HIGHLY VERSATILE AND SUITABLE FOR;

- CONSTRUCTION CRANES • CRAWLER CRANES
- CONCRETE PUMPS • FIRE AND UTILITY TRUCKS
- MOBILE CRANES • MOBILE ELEVATING WORK PLATFORMS
- MOBILE CRUSHING EQUIPMENT • SCAFFOLDING
- SITE CABINS • TELESCOPIC LIFT TRUCKS
- TRUCK-MOUNTED CRANES • VEHICLE-MOUNTED PLATFORMS

ADVANTAGES;

- Lightweight
- With carrying straps
- Compact
- Extreme stability
- No moisture absorption
- Easy to clean
- Very durable



LS WEST AFRICA (Pty) Ltd

- Our personal belief in professional services and honest business ethics, prompt us to address the needs in the specialized lifting industry market.
- LSWA offer you our expertise on inspections & repairs to all types of lifting tackle. We conform to the highest standards of safety as requested by relevant legislation.
- LSWA operate according to the strict procedures of the Lifting Machine and Lifting Tackle Regulations of the Occupational Health and Safety Act, Act 85 of 1993.
- LSWA also comply within the accepted SANS specifications.



Extract from

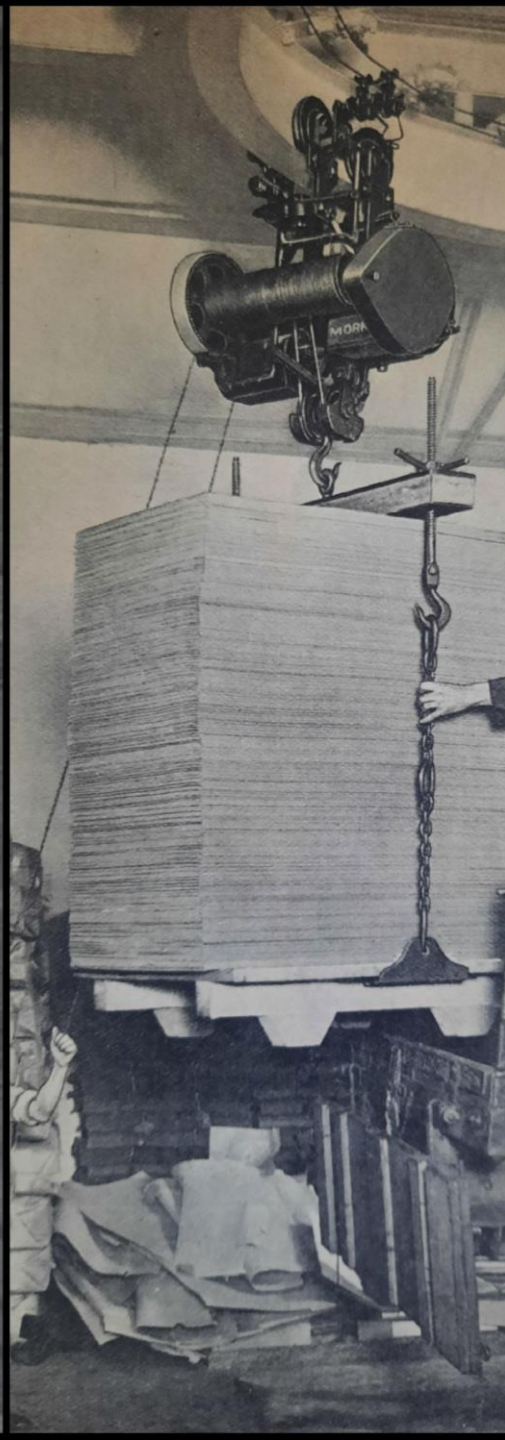
Machinery and Occupational Act no: 85 of 1993

Regulation 18: Lifting Gear

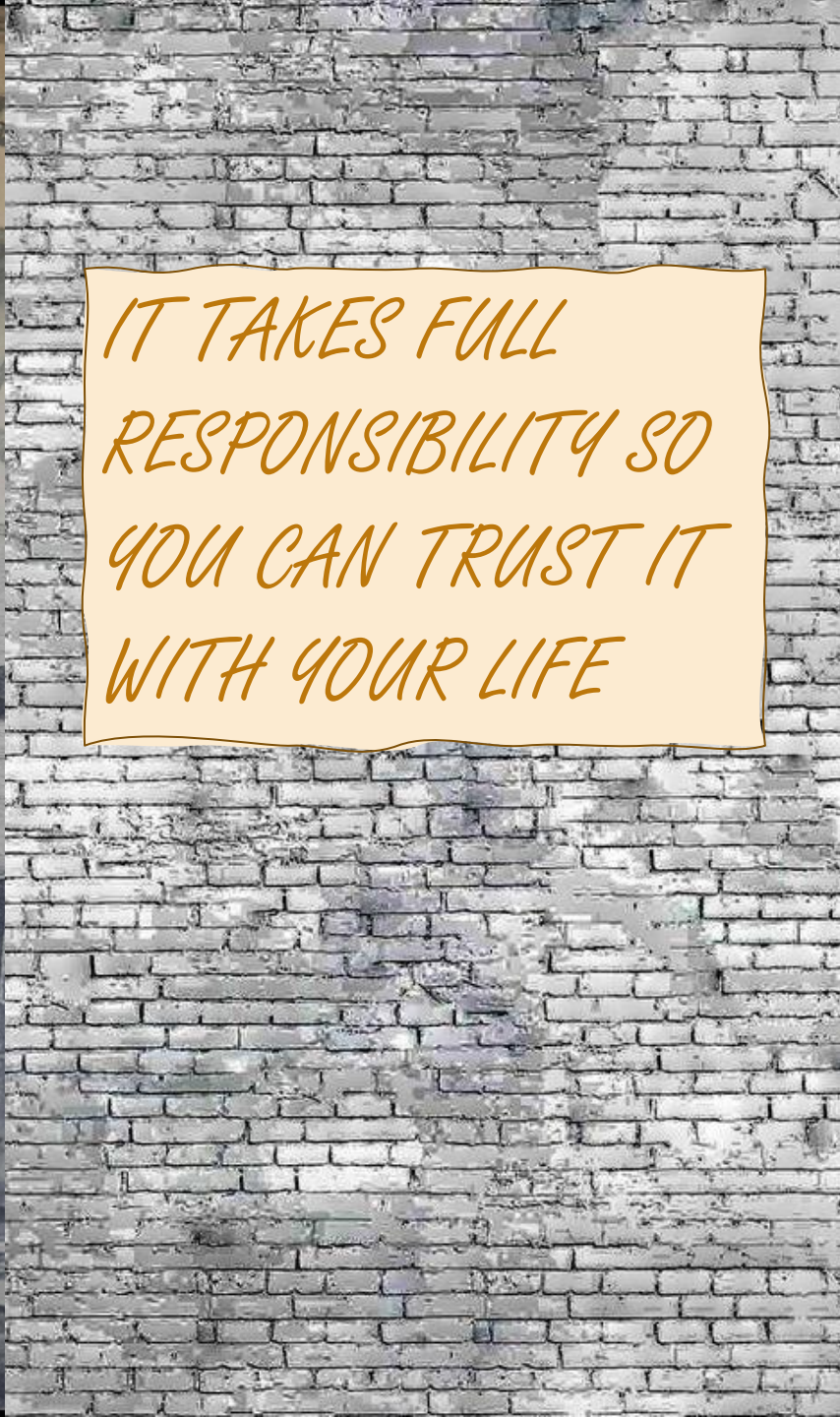
No user shall use or allow the use of any lifting tackle or lifting machine unless the following provisions are complied with,

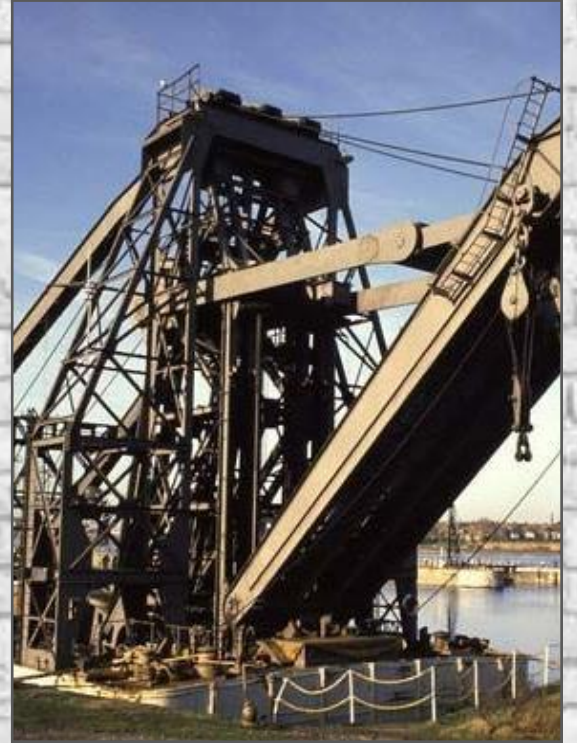
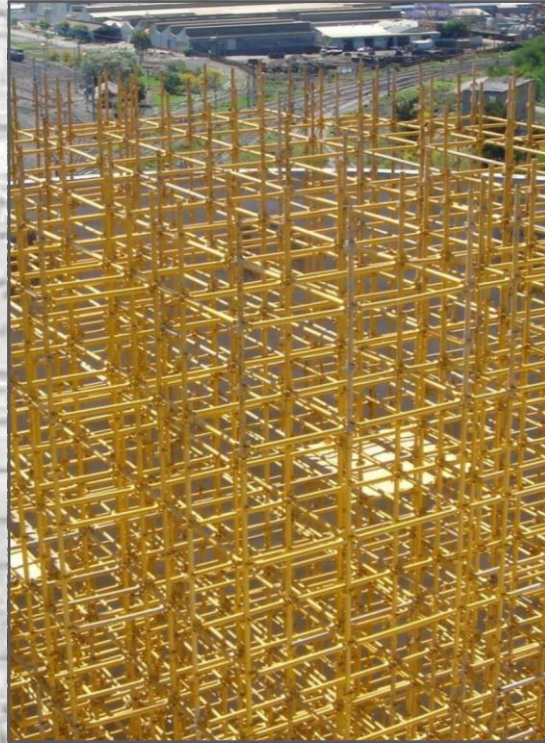
Every hook, sling, chain or rope which forms part of any lifting machine, shall;

- a) Be a good construction, sound material, adequate strength, free from patent defects and in general constructed in accordance with accepted technical standards;
- b) In the case of ropes or chains, have a factor of safety with respect to the maximum permissible load of at least ten for fibre ropes, six in the case of steel wire ropes and five in the case of chains except in the case of double part spliced, endless sling legs and double part endless grommet sling legs made from steel wire rope when the factor of safety shall be at least eight. When the load is equally shared by two or more ropes or chains, the factor of safety may be calculated with respect to the sum of their breaking load;
- c) In the case of steel wire ropes, be discarded and not used again for lifting purposes if length of ten diameters the total number of visible broken wire exceeds five per cent of the total number of wires, or the rope shows signs of excessive wear, corrosion or other defect whereby its use has in any way become dangerous;
- d) Be examined at intervals not exceeding three months by a competent person who shall forthwith and sign the result of each such inspection in a book kept for this purpose;
- e) When not in use, be so stored or protected so as to prevent damage or deterioration.



*IT TAKES FULL
RESPONSIBILITY SO
YOU CAN TRUST IT
WITH YOUR LIFE*



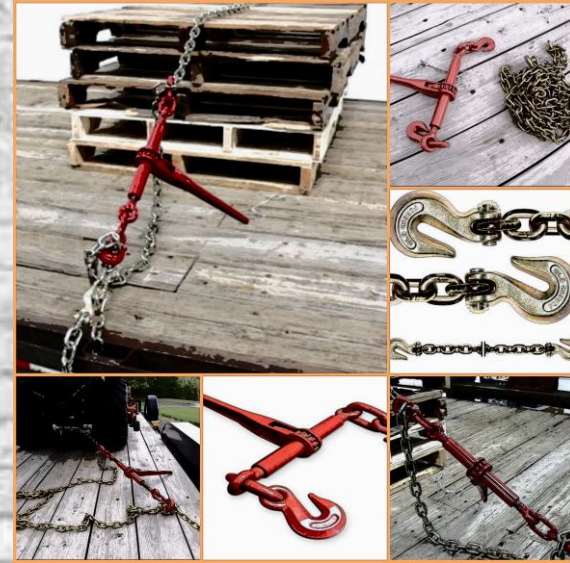


LIFTING YOU HIGHER.....
SAFELY!!



Proud suppliers of approved premium quality products that can be trusted





CONTACT INFORMATION

Sales/Key Accounts

karin@lswestafrika.co.za +27 79 697 6024 and sonet@lswestafrika.co.za +27 83 628 1089

Financial

rochelle@lswestafrika.co.za +27 82 455 7848

Enquiries

info@lswestafrika.co.za

Fax No. 086 589 7209

Breakdown: +27 71 226 2567

www.lswestafrika.co.za