



**South Africa Cargo Services**

## **Company Profile/Product Catalogue**

### Services offered at South Africa Cargo Services

- Bulk Containerization
- Cargo Handling
- Clearing and Forwarding Services
- Container Handling Services
- Transportation
- Warehousing Services

### Branches:

- Cape Town
- Durban
- East London
- Nqura/Coeqa
- Port Elizabeth
- Richards bay
- Saldanha

## We Move Cargo

In 1992, in response to South Africa's worst drought at the time, Greystones Enterprises, headed by the Mouritzen brothers – Ken and Digby, designed, manufactured and patented a portable conveyor discharging and loading system for handling of enormous tonnages of bulk grain imports into the region. The conveyor belt system proved its flexibility and efficiency when it was successfully operated in the discharge of sugar, wheat and animal feeds as well as vessel loadings of cement clinker and corn.

We have over 25 years of ship to shore experience and operations established in all the ports within South Africa, South Africa Cargo Services 'SA Cargo' is not only well equipped and experienced to handle all types of cargo ranging from containers, cars, trucks, heavy lifts, various bulk and break bulk commodities; we are flexible, dynamic and proactive in the way we conduct our business.

Back of port logistics is our main game and SA Cargo, now operates a fully fledged warehouse situated in Congella, Durban just under 4 kilometers from Durban Container Terminal. In addition to this we are in the process of developing a state of the art Container Freight Station in Bayhead within the vicinity of the Durban Port where we will be doing bulk containerization. This Freight Station will be launched on 1 October 2018.

For us it begins with proactive planning which involves adequate training and empowering our employees and having a comprehensively integrated support function that allows us to offer outstanding customer service with full management accountability.

We believe in developing long term and mutually beneficial relationships and in addition to our ship to shore and shore to ship services we also focus on delivering added value to our customers by adding to their value chain covering additional services from warehousing, handling, packing/unpacking, distribution and a full range of other value added services covering the full landslide operation up to getting the cargo onto the ship.

We are committed to continuously improve our systems and process and believe in openly engaging all our stakeholders in order to achieve a common goal of managing resources efficiently. This commitment to managing resources efficiently will yields positive results for all as it will allow us to maximize our operations and the use of our workforce which in turn reduces the cost of operation which ultimately positively impacts our customers

"We believe in constant and open engagement with our stakeholders in order to have an all-encompassing continuous improvement plan"

## We Move Cargo

We are value-based organization which enables our team to grow. For us to deliver high quality consistently, we have adopted the following values:

- ◆ We are flexible, dynamic and pro-active in our business with customers at heart.
- ◆ We are accountable and responsible corporate citizens.
- ◆ We are open and honesty in all our communication
- ◆ Above all, we act with integrity.

### **Our mission statement**

To exceed customer expectations in cargo handling.

### **Vision**

To be an exceptional provider of cargo handling solutions in Africa.

### **Cape Town Port**

#### **SPECIFICATIONS AND SERVICES**

**Location:** Atlantic Ocean

**Water Depth:** 16 meters

**Berths & Length:** 4 berths, 1220 meters, 1X Ro-Ro -150 meters

The Port of Cape Town lies in the shadow of Table Mountain, approximately 120 nautical miles north west of Cape Agulhas – strategically positioned almost at the southern tip of the African continent. The port serves cargos moving between Europe and the western hemisphere and the Middle East and Australia, especially containers. Over the centuries, Cape Town has evolved from a staging post on a major east-west trade route into a modern, full service, general cargo port renowned for deciduous fruit and fish exports.

2016/10/26

Cape Town Branch | SSA Marine

**Cranes:** 8

**Truck Lanes & Scales:** 6. 3 In and 3 Out

**Reefer Services:** 1400

**Rail Services:** Rail services are also available

**Highway Access:** 2km away

### **Cargos / Commodities Handled:**

- Containers
- Moto Vehicles
- Scrap Steel

### **OTHER FACILITY FACTS**

**Passenger Liner Dock:** Yes

**CFS:** Yes

**Heavy Lift Service:** Yes

**Maintenance:** Yes

**Other Equipment:** Yes

**Barge Access:** Yes

**Transportation:** Yes

**Automated Availability:** Yes

## **Saldanha**

### **SPECIFICATIONS AND SERVICES**

In 2004 South Africa Cargo Services started to load the first iron ore shipment for clients: Kumba, Assmang, Sedi-beng and Emerging Miners. South Africa Cargo Services is the only stevedoring company in South Africa to load iron ore.

**Location:** Saldanha about 130 km West from Cape Town.

**Size:** Bulk terminal 630m and MPT 350m

**Water Depth:** 21.25 meters at bulk. 13.5 at MPT

**Cranes:** Transnet ship loaders and skips

**Berths & Length:** 2 berths. 1 bulk berth for iron ore for Cape Size vessels of 320 meter long. MPT (Multipurpose Terminal) for Panamax vessels of about 150 meters long and loading of iron ore, pellets and manganese.

**Cranes:** Transnet ship loaders and skips

**Rail Services:** Transnet rails from mine about 850 km /trains/trucks offload iron ore on stockpiles.

**Cargos / Commodities Handled:**

- Iron Ore
- Heavy Equipment Handling

## **East London**

### **SPECIFICATIONS AND SERVICES**

**Size:** Total berth size 2707 meters

**Water Depth:** 10.4m

In the early 2000, Greystones Cargo Systems opened its branch in East London, At that time the port of East London did not have any facilities for the importation of grain products, namely wheat and maize. GCS set up a hopper and conveyor belt facility from the quay stretching into the grain elevator silos totaling approximately 450 meters. The system continues to service local bread manufacturers with import wheat from Argentina and neighboring states. Wheat was also railed to Lesotho from East London.

**Location:** The port of East London is situated on the East Coast of South Africa between Durban and Port Elizabeth, at the mouth of the Buffalo River, East London. It is South Africa's only river port.

2016/10/26

## East London Branch | SSA Marine

**Cranes:** 1 x 150 ton mobile port crane

**Reefer Services:** 50

**Highway Access:** 5 km to the N2 highway

### **Cargos / Commodities Handled:**

- Containers
- Motor Vehicles
- Breakbulk
- Bulk Grain
- Cargos Project Cargo/Heavy Lifts
- Scrap Steel

### **OTHER FACILITY FACTS**

Grain Silo's – Storage capacity 76000 m/tons, multi level car terminal – under cover storage of 2800 units – open area – 2500 units. Container Terminal – 14000m/sq. open area 2 port sheds on the East Bank, combined storage space of approx. 4170m/square

**Cold Room Service:** yes – out of the port

**Fumigation Facilities:** yes

**Heavy Lift Service:** yes

**Transit Shed:** yes

**Maintenance:** yes – drydock – 110m

Berths & Length: Total of 12 commercial berths and 1 repair quay, 6 of these berths are on the West Bank with a total quay length of 1206m and 6 on the East Bank offering 1204m

Truck Lanes & Scales: 2 lanes inbound and 2 lanes outbound on the East Bank and 1 lane each on the West Bank Side of the port.

Rail Services: Rail connection to most of the major cities in South Africa.

## Port Elizabeth

### **SPECIFICATIONS AND SERVICES**

**Location:** Port Elizabeth, South Africa, PE Harbour

**Size:** 680 acres / 275.hectares

**Water Depth:** 36 ft / 10.97 meters

**Cranes:** 12

Opened services in 1998 : Offers 2 Ports: (1) Port Of Port Elizabeth at city center situated on Indian Ocean and (2) Port Of Ngqura (Coega) situated northeast of Port Elizabeth also on Indian Ocean.

Berths & Length: PE: 2 container berths, 1 RoRo, 4 multi purpose , 1 ore Coega 4 container berths 3 multi-purpose

2016/10/26

Port Elizabeth Branch | SSA Marine

**Reefer Services:** 2500+/-

**Rail Services:** Spornet available on request

**Highway Access:** 15km access between ports

### **Cargos / Commodities Handled:**

- Containers
- Autos
- Project Cargo
- Driving Services
- OPD's and abnormal load transfers
- RoRo

## Richards Bay

### SPECIFICATIONS AND SERVICES

**Water Depth:** 16 – 34 meters

South Africa's most northernmost port is 160 km northeast of Durban. Richards Bay operations include stevedoring of import and export of minerals and chemicals. Stevedore services include skip-loading, terminal belt loading, as well as bulk discharge. Warehousing services, storage and bagging.

**Berths & Length:** 15 berths with length of +/- 600 meter. Most vessels are same size here due to dry bulk cargos being handled.

**Cranes:** 3 export belt cranes for port, 3 import Leiber cranes for that division of the port. General bulk cargo cranes that are mobile to travel in port as needed.

### Richards Bay Branch | SSA Marine

#### Cargos / Commodities Handled:

- Coal
- ferro chrome
- pig iron
- ferro's manganese
- sulphur
- chloride slag
- rutile
- zircon
- alumina

## Durban Car Terminal

### SPECIFICATIONS AND SERVICES

GCS is operating 90% of the major port for RoRo stevedoring in South Africa which is located by the Indian Ocean.

**Location:** Durban Harbour, Point Car Terminal, Durban on the Indian Ocean

**Water Depth:** 37.44 feet/10.6 meters

**Highway Access:** 9 km to the N3 highway

#### Cargos / Commodities Handled:

- Autos
- Heavy Equipment
- Project Cargo

**Berths & Length:** 3 berths, measuring 3335 feet/ 1017 meters for RoRo vessels, Q/R berth 1200 feet/366 meters, G berth 1135 feet/346 meters, L/M berth 1000 feet 305 meters  
2016/10/26

**Highway Access:** 9 km to the N3 highway

Durban Car Team | SSA Marine

## Durban Warehouse

### SPECIFICATIONS AND SERVICES

Cargo and Container Handling Services

Stuffing and De-Stuffing of Containers

Cross docking services

Palletizing/De-Palletizing /Unitizing

Stock Control and Management

Full secured with 24/7 CCTV and tactical response

Fully equipped with forklifts and other specialized cargo handling

**Location:** Congella Durban KwaZulu-Natal.

**Size:** 7000m<sup>2</sup>

## Staff and Training Programmes

Our staff continually undergo training and reassessments in order to up-skill as this helps us to maintain the quality of our help.

## Sustainability– Level 2 B– BBEE Contributor



### BROAD-BASED BLACK ECONOMIC EMPOWERMENT CERTIFICATE OF COMPLIANCE

*This serves to certify that:*

Enterprise Name	S A CARGO SERVICES (PTY) LTD
Physical Address	37 WATFORD ROAD CONGELLA 4013
Registration Number	1989/002395/07
VAT number	4860139054

Has been rated as a GENERIC Enterprise as indicated by the Department of Trade and Industry's Codes of Good Practice 32511 gazetted in August 2009. In obtaining the B-BBEE status, Generic Enterprise Scorecard Principles, as applicable to Maritime were used based on information provided to 4<sup>th</sup> Dimension Consultants and is an independent opinion based on verification, validation and audit analysis performed.

The following is the applicable scorecard

		Element Weighting	Score
Direct Empowerment	Ownership:	20	21.00
	Management Control:	10	8.80
Human Resource	Employment Equity:	15	10.17
	Skills Development	15	9.53
Indirect Empowerment	Preferential Procurement	20	20.00
	Enterprise Development	15	15.00
	Socio – Economic Development:	5	5.00
		<b>100</b>	<b>89.51</b>

More than 50% Black Owned	26% Black Owned
More than 30% Black Female Owned	13% Black Women Owned

B-BBEE Status Level	Level 2
B-BBEE Procurement Recognition level	125%
Value-Adding Supplier	NO

  
Technical Signatory  
M. C. Haffjee

Date issued: 31 July 2020  
Expiry date: 30 July 2021



Cert/Score Number: 2020/07/21

## CSI– Initiative

SA Cargo donates money to the School of Knowledge (NGO) based in Saldanha on a monthly basis.

In 2019 we sponsored the 16th hole, in 2020 we did not participate because there was no actual Golf-day due to COVID-19 and we looking at the next one for 2021.

# We Move Cargo

## Cape Town

We offer container stevedoring



## Durban (Warehouse)

- Storage of non-hazardous and hazardous products paper, polymer, peanuts,
- Palletizing
- Shrink wrapping
- Bagging/ re-bagging
- Clearing and Forwarding
- Fumigation
- Cargo and container handling
- Transportation



## We Move Cargo



### Durban (Container Freight Station)

Storage, stockpiling, weighing, SOLAS, NAVIS, packing bulk cargo into containers. Break Bulk, Lashing & Unlashing, securing of cargo



# We Move Cargo

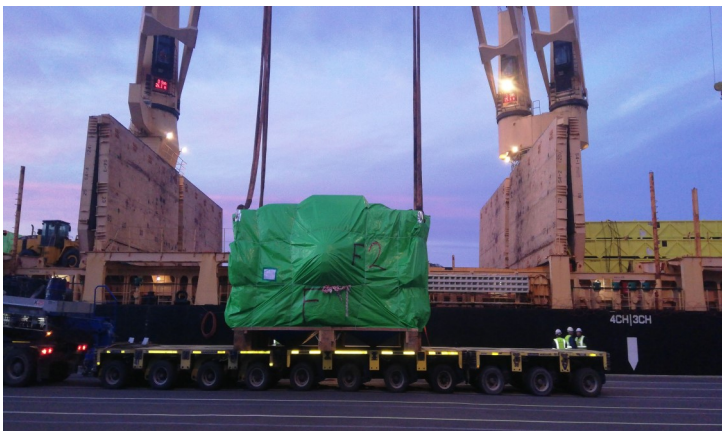
## Durban Car Terminal

### Stevedoring of cars



## East London

### Handling Containers, motor vehicles, break bulk, cargo project and scrap steel



# We Move Cargo

## Coega/Port Elizabeth

Driving services, handling autos, project cargos, OPD's and abnormal load transfers, RoRo and bulk manganese.



## Richards Bay

Stevedoring of imports and exports of minerals and chemicals, stevedore services include skip- loading, terminal belt loading and bulk discharge



## Saldanha

### Handling of Iron Ore and Manganese



## We Move Cargo

### SA Cargo Branches in South Africa:

#### 1. Cape Town

Address: 28 Marine Drive, Paarden Eiland 7405

Sales email address: SalesaminCPT@sacargoservices.co.za

Branch Manager: Arnold Govender

Branch Manager contact number: 083 778 4453

#### 2. Durban (WHS)

Address: No 37 Watford Road Congella

Sales email address: Salesadmin@sacargoservices.co.za

Branch Manager: Ravi Naicker

Branch Manager contact number: 083 778 4456

#### Durban (Container Freight Station)

Sales email address: Salesadmin@sacargoservices.co.za

Branch Manager: Ravi Naicker

Branch Manager contact number: 083 778 4456

#### Durban (Car Terminal)

Address:

Sales email address: alesadmin@sacargoservices.co.za

Branch Manager: Denzil Reddy

Branch Manager contact number: 083 778 4446

#### 3. East London

Address: Grain Elevator East London Harbour 5201

Sales email address: SalesadminEL@sacargoservices.co.za

Branch Manager: Vincent Juta

Branch Manager Contact number: 083 384 8334

#### 4. Coeqa& Port Elizabeth

Address: The harbour Café, Jetty street Port Elizabeth

Harbour 6001

Sales email address: SalesadminPE@sacargoservices.co.za

Branch Manager: Yusuff Farad

Branch Manager contact number: 082 534 0254

#### 5. Richards Bay

Address: South Dunes, Richards Bay Harbour (RBCT) 3900

Branch Manager: Nkosinathi Mthethwa

Branch Manager contact number: 083 778 4424

#### 6. Saldanha

Address: Kumba Iron Ore Building, Saldanha, 7395

Branch Manager: Ruben Cloete

Branch Manager contact number: 083 384 8320

Sales and Marketing Manager: Mndeni Ngcobo

Contact Number: 076 825 5769

Email address: MndeniN@sacargoservices.co.za

*Website: <https://sacargoservices.co.za/our-services/>*

*Facebook: South Africa Cargo Services*

*Instagram: sacargoservices*

# We Move Cargo

## SA CARGO EXECUTIVE



**Themba Ngcobo: Chief Executive**



**William Van Zyl: Executive- Stevedoring**



**Hans Modipane: Executive- Logistics, Sales and Marketing**



**Siyamdumisa "Siya" Dube Executive Finance and Admin**



**Nompumelelo Nxumalo: Human Resources Executive**

