

S·E·T



AFRICA



Product
OVERVIEW

.....

www.setafrica.co.za

CONTENTS



03

About us

Our commitment, dedication & loyalty to our clients is well rooted in the ethics of the company, making your needs, whether big or small, our brightest priority!



05

SGM

Focusing on innovation and experimenting with emerging technologies, SGM has gathered one of the most experienced R&D teams in the world.



09

KV2 Audio

Super Live Audio or as we refer to it 'SLA' has been developed through KV2's efforts to achieve the highest possible dynamic range and the lowest possible losses.



16

Suprabeam

SUPRABEAM today designs and distributes innovative LED-torches and LED-headtorches of the highest quality and destined for professional craftsmen in industry, automotive and outdoor applications.



19

Swisson

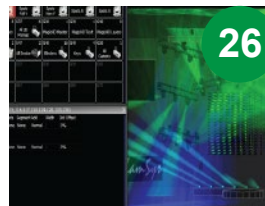
SWISSON supplies worldwide entertainment- and industrial market this with top edge technology products, providing innovative solutions and outstanding added value.



21

EXE Technology

The brand name EXE identifies a range of products designed for the entertainment & exhibition markets, offering a range of equipment engineered to safely manoeuvre stage equipment, scenery, video walls & other related structures... before, during and after your performance.



26

Chamsys

ChamSys is in the unique position of utilising software developers that are themselves lighting designers. This ingrained knowledge has enabled us to develop a console to meet the needs of the end users rather than the software programmers.

A wise man once said:
"The resentment of
poor quality lasts
much longer than the
satisfaction of
low price"

OUR STORY

Synergy Entertainment Technologies founded in early 2011, is the result of a rich history engulfed in the African Live entertainment industry. Based in South Africa, on the most Southern tip of Africa, the gateway to Africa as some might call it, a discovery of a passion for people, service and technology, has led to the creation of S.E.T Africa – a company dedicated to the supply of the best Pro Audio, lighting and structural equipment available on the global market. Ensuring our customers have access to equipment of the highest standards, guaranteeing a professional level of performance and reliability.

Our commitment, dedication & loyalty to our clients is well rooted in the ethics of the company, making your needs, whether big or small, our brightest priority!

Best Regards,

Marin Matakovic
Director



SERVICES



- Supply of Industry Grade Equipment for Pro-Audio, Lighting and Structural Segments.
- Technical consultations.
- Audio & Lighting System Design.
- Turnkey solution offerings for installations and projects.
- Structural Design, supply and deployment.
- Bespoke Custom Projects.
- Training and support on our products.
- Stage Design

OUR TEAM



- A culmination of highly experienced specialists, with diversified personalities and go-getter attitudes, ensures a team that's there to support you when you need it most, making sure your deadlines are met and oceans are crossed to find a sound solution for any goals & challenges you have.
- Our Department Champions ensure access to all of our latest information, services and trends, while our hands-on crew ensures flawless delivery & execution.
- Technicians trained by some of the world's leading R&D teams ensures premium support on all the product we supply.

OUR PRODUCTS



- SGM Light – Professional lighting and visual equipment designed and manufactured in Denmark, considered one of the world's most innovative LED technology companies.
- Kv2 Audio – The brainchild of George Krampera one of today's most reputable forefather of Sound theory, Kv2 Develops & Manufactures High Definition concert audio.

G1 BEAM



This unique and compact LED moving head offers a wide range of advantages such as:

- Option of being battery-driven
- High power white LED light source
- IP65 rating
- Maintenance-free and multi-environmental fixture
- Choice of wired or wireless DMX
- Sharply defined beam in speedy operation
- Lightweight and compact design (weight of only 8.9 kg/19.6 lbs)
- Gobo wheel of 19 gobos + oscillation effect + two times open
- Color wheel of 14 colours + open
- Built-in macro effects
- Internal stand-alone programs
- Internal pan/tilt presets (patent pending)

A sharply defined, flat and uniform beam that operates rapidly in every movement provides intense mid-air beam effects through a high power white LED light source and a color wheel as well as a gobo wheel. The results are high contrast levels and an extreme brightness. Adding to its uniqueness, this moving head is not only IP65-rated and maintenance-free, but also offers the exclusive choice of being either battery-driven with an impressive 10-12 hours operation in typical use.

With the ground-breaking G-1 Beam moving head, SGM has succeeded in offering numerous cutting-edge features in a physically compact chassis.

Spirit of the Staithes

Products used: Q7





SGM Moving Heads

G-Spot LED Moving Head

With the introduction of the G-Spot, SGM provides a LED moving head spot with numerous revolutionary functionalities.

Advantages Include:

- High power RGBY LED light source
- IP65 rating
- Maintenance-free and multi-Environmental fixture
- No accumulation of dust or externally Induced impact on internal optics, gobos or the light source unit
- No smoke fluid build-up inside
- Integrated dehumidifier
- Perfect inner cleanness of the luminary
- Excellent performance in any conditions



G-Profile LED Moving Head

The moving head product range is now expanded with a new, exclusive LED framing version named G-Profile.

Advantages Include:

- mHigh power RGBY LED light source
- IP65 rating
- Maintenance-free and multi-Environmental fixture
- Advanced and adjustable framing Shutters
- No accumulation of dust or externally Induced impact on internal optics, gobos or the light source unit
- No smoke fluid build-up inside
- Perfect inner cleanness of the luminary
- Excellent performance in any Conditions



P-2 LED Wash Light

Based on the groundbreaking P-5 technology, the IP65 rated P-2 comes in a very small and robust chassis weighing only 6.1 kilos/13.4 lbs.

Advantages Include:

- High performance color LED fixture with Low power consumption
- IP65 rating
- Lightweight construction
- Individually controllable segments
- True LED alternative to traditional wash Lights
- User-friendly setup via simple control Button and OLED display
- Numerous mounting and position Options combined with low weight



P-5 LED Wash Light

The P-5 has taken the popular Palco 5 as its design base and transformed into an IP65 rated fixture - suitable for outdoor use.

Advantages Include:

- High performance color LED fixture with Low power consumption
- IP65 rating
- True LED alternative to traditional wash Lights
- Eco-friendly and economical operation
- Easy mounting - no tools required
- Huge variety of saturated colors and a Very bright light
- High applicability
- Patented RFID implemented interface And a Standard built-in wireless DMX Receiver

SGM LED Effects Lighting

ILD Installation LED Driver

The ILD, Installation LED Driver, shares the majority of the features of the TLD-612A, but has a smaller and more compact power supply, which makes it suitable for permanent installations, where a small physical footprint is required. The ILD is capable of driving either 6 pcs. of LT-100 tubes, 3 pcs. of LT-200 tubes or 3 pcs. of full length LB-100 strings (7 pcs. of LB-100 pr. string).

Advantages Include:

The ILD is also IP65 rated and has daisy-chainable Ethernet for Artnet input, and it has a power consumption of maximum 120W.



LD-5 LED Dome

These LED domes can be used in any orientation, with a maximum number of 35 domes in a single chain.

Advantages Include:

- The powerful effect combined with a small physical footprint
- The flexibility of a broad viewing angle of 180°
- IP65 rating (front of product)

The outer diameter is just 80mm (ceiling cut-out diameter of 70mm), with a total depth of 53.3mm (depth below ceiling of 35mm).

The LED domes can function in maximum ambient temperature of 40°C and minimum of -10° C. Control is via three-channel DMX.



TLD-612 Touring LED Driver

This Touring LED Driver has specifically been designed for controlling SGM's LB100 LED Balls and LT100/LT200 Graphic Tubes.

Advantages Include:

The Driver's six outputs can control up to 6 x 8-metre lengths of LED strings and 1m or 2m graphic tube per output (respectively containing 27 pixels and 54 pixels).

Maximum total power consumption is 360W and each LED pixel uses 3 DMX channels for RGB: the #1 pixel (1.1 DMX output) uses channel 1, 2 and 3, #2 pixel uses 4, 5 and 6, etc.

TLD-612 A Touring LED Driver - Art-Net

The TLD-612A offers all the same features and driving capabilities as the regular TLD-612, with the variation of offering an Ethernet RJ45 Artnet interface instead of regular 5-pin XLR DMX interface.

Advantages Include:

The output of the TLD-612A is completely individually configurable by software, which makes it possible to send any channel range in any universe to each output. The Artnet interface is especially designed for high-speed / high-flow DMX, and thereby making it a perfect match for pixel mapping.

This makes the TLD-612A suitable for applications that require numerous DMX universes, at a cost-efficient level. This driver ensures quick and easy installation for touring.



LT-100/200 3D Graphic Tube

The LT range comprises a series of 1-metre and 2-metre long graphic tubes, loaded with RGB LEDs at 35 mm pixel pitch - all DMX drivable via any proprietary media server, or pixel mapping DMX console.

This 3D LED graphic tube can be suspended from the ceiling, providing a staggering overhead 3D vertical and horizontal zip effect. However, it is not limited to a suspension mode, as it can be floor-mounted or integrated into a scenery in creative ways.

Advantages Include:

- The creativity to display 3D effects
- The flexibility in direction of lighting effects
- IP65 rating
- A comprehensive viewing angle (2 x 130°)
- Lightweight construction

The theory of pixel mapping is that two dimensional objects are transformed into three dimensions with the help of advanced

programming techniques; thus each LT-100 LED pixel can be addressed individually enabling the LD to create genuine 3D lighting effects, such as 3D waves or 3D bars which can be easily manipulated in terms of speed, colour, brightness, direction, and much more.

This creativity will be extended further by the future release the smaller length LT-64, which is only 64 cm long.

LB-100 LED Balls

Multiples of LB-100 LED Balls are designed to form a video light curtain with 120mm pixel pitch.

The curtain is made up from 0.85m long strings, each containing seven white LED balls. Each 28mm sphere contains two powerful RGB LEDs built into the white plastic molding. These can extend to a maximum length of 6.8 meters (using 56 balls) and total power consumption is just 59W.

Advantages Include:

- The uniqueness of a full view angle of 360°
- The creativity to display 3D effects and content
- The flexibility of extending the length of a string (up to 6.8 m)
- IP65 rating



LP-700 LED Pix

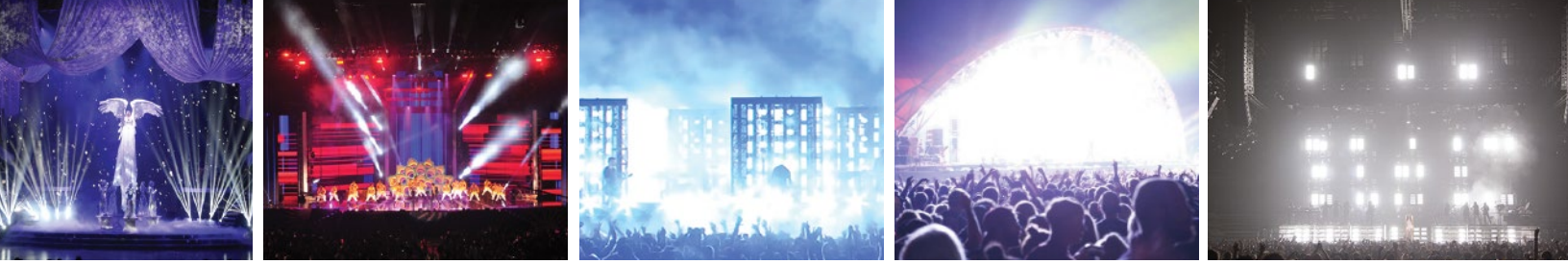
The LP-700 comes in chain lengths of 6.75m (including connector).

Advantages Include:

- IP65 rating
- The creativity of displaying graphics and Low-res video content
- The flexibility of adjusting pixel pitch through spacers (60, 80, 100, 120 mm With a pixel pitch of 120mm, and individual pixels measuring 40mm x 40mm x 17mm (LWH) each length has 56 addressable pixels.

Installable in any orientation, it is IP65-rated, with maximum ambient operating temperature of 40°C and minimum of -10°C. Signal source is DMX512 A (with 168 controllable DMX channels).

The power consumption of each LP-700 with 56 pixels is just 62W.



SGM Strobe Lights

X-5 White LED Strobe

SGM has introduced two revolutionary new LED strobes — designed to deliver the same output as conventional strobes from one fifth of the power.

Experience the extreme luminous output of nearly 3,000 pure white LEDs placed into three individually controllable LED segments. The X-5 makes it possible to create unique effects never delivered before by a strobe.

Advantages Include:

- High performance white LED fixture with low power consumption
- True LED alternative to traditional strobes
- Intuitive interface
- Noiseless operation
- Three individually controllable segments
- Easy mounting - no tools required



XC-5 Color LED Strobe

The XC-5 has been designed to revolutionise the strobe industry and mark the end of the old xenon-based effects which have such high wattage that they need many generators to power them.

SGM's new LED strobes can produce numerous different flash combinations.

Advantages Include:

- High performance color LED fixture with low power consumption
- True LED alternative to traditional strobes
- Intuitive interface
- Noiseless operation
- USITT DMX 512 A and RDM controllable
- Easy mounting - no tools required
- Stand-alone mode eliminating the need for dedicated controllers

“SGM has introduced two revolutionary new LED strobes, designed to deliver the same output as conventional strobes from one fifth of the power.”

SGM LED Screens

LS-3.75 LED screen

The SGM LS-3.75 is a Danish built, ultra hi-res video panel capable of displaying detailed video from a high-resolution digital video source.

Advantages Include:

The LED chips are 3in1 SMD, which makes them suitable for applications where picture quality and brightness are important. The screen has no fans, so it is completely noiseless, and has a high refresh rate of 2,880 Hz making it perfect for applications such as television, theatre, exhibitions, show production and concerts. The screen comes with a high light output of 900cd/nits per sqm, and a contrast ratio of 1,600:1. The SGM LS-3.75 features 3.75mm pixel pitch, which is suitable for applications where the absolute best picture resolution and quality are required. It is recommended for applications where the viewing distance is 4 meters or more.

The long-life LED system and very low pixel failure rate renders the SGM LS-3.75 very suitable for permanent installations, yet the 8.5 kg low weight easy-to-assemble units also provide a very attractive system for touring and rental use.



LS-4.6 LED screen

The SGM LS-4.6 is a Danish built, hi-res video panel capable of displaying detailed video from a high-resolution digital video source.

Advantages Include:

The LED chips are 3in1 SMD, which makes them suitable for applications where picture quality and brightness are important. The screen has no fans, so it is completely noiseless, and has a high refresh rate of 2,880 Hz making it perfect for applications such as television, theatre, exhibitions, show production and concerts. The screen comes with a high light output of 900cd/nits per sqm, and a contrast ratio of 1,600:1. The SGM LS-4.6 features 4.6mm pixel pitch, which is suitable for applications where the absolute best picture resolution and quality are required. It is recommended for applications where the viewing distance is 5 meters or more.

The long-life LED system and very low pixel failure rate renders the SGM LS-4.6 very suitable for permanent installations, yet the 8.5 kg low weight easy-to-assemble units also provide a very attractive system for touring and rental use.



LS-6.67 LED screen

The LS-6.67 is part of SGM's series of hi-res LED screens. The LS-series of LED screens is designed around the same, robust however slim and sleek display design, while the modules diverse to meet the exact requirement of each installation.

Advantages Include:

- IP65 rating for temporary or permanent outdoor events
- Neutrik Power and Data connectors for reliable performance and high quality
- Simple construction with focus on a robust and sleek design
- Low-weight modules attractive for touring and rental use
- Test button facility on board
- Advanced mechanical design allowing for easy servicing
- Completely fan-less modules create an intelligent, noise-free system
- Hi-res picture quality providing exceptional brightness and contrast levels together with an unique color uniformity
- Cost-effective solutions based on SGM's advanced LED technology
- SGM developed software for control and configuration providing the ultimate simplicity for the user

The LS-6.67 features a pixel pitch of 6.67mm and offers a high picture resolution and quality, with a brightness of 5,000 nits per sqm.

It provides a superior viewing angle of 140°, while the observer will still experience a complete focused display even in extreme viewing angles – with a recommended viewing distance of more than 7 meters.

The LS-6.67 offers the uniqueness of IP65 rating, making this the perfect solution for outdoor events or events exposed to a high humidity level. The compact and light-weight modular design guarantees for an easy and quick installation where no tools are required.

The advanced mechanical design makes serviceability ideal for rental use.



LED Rail Lights SGM

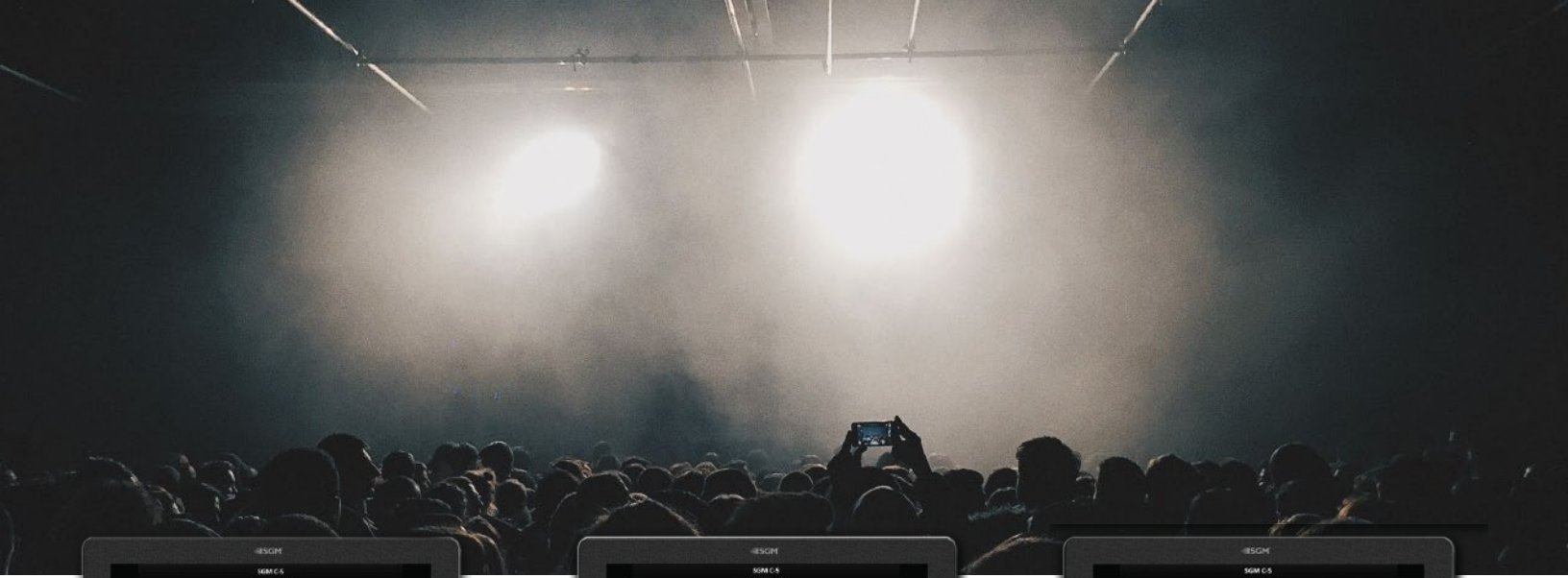
R-2 RGBW, R-2 W, 3000K & R-2 W, 4000K

With the introduction of the innovative R-2 LED rail light series, SGM has revolutionized rail lights, as we know them today. The new lighting concept gives the user full control and offers a unique and personal experience; whether it is installed in a museum, an exhibition, a center, a hall, a trade show, a club or a shop or any other application you could think of. It is possible to control your complete light setup via wireless DMX. This means that dimming the light up and down to change the mood, changing the color settings or even adjusting it according to the season of the year can be carried out in an instance - even from a distance. Automatically programmed schedules or alterations can all be done manually, providing endless possibilities.

Advantages Include:

- High performance color LED fixture with low power consumption
- Lightweight construction
- Gives the user full control
- Endless possibilities to create dynamic and vibrant environments
- Easy retrofitting
- Preset programs and make alterations from a distance via SGM's C-5 Wireless DMX controller

This opens up for many new opportunities to create dynamic and vibrant environments. The R-2 is extremely intelligent in terms of adapting to a specific environment. As people stop by a sensor connected to the system, it is possible to activate a preset light sequence that will attract attention to a specific highlighted area. Interaction is possible via a displayed QR code that when scanned with a smart phone will allow the user to gain control with predefined areas. Via the built in system intelligence, operations around the globe can be set to have the same light settings and can be changed globally from the brand headquarters. This ensures a coherent corporate identity.



SGM Controllers



SGM C-5 Wireless DMX Controller

The C-5 Wireless DMX Controller is a uniquely developed piece of software intended for Windows tablets offering the user a variety of control and programming possibilities related to SGM luminaires.

Advantages Include:

This tool gives the user the advantage of pre-programming several lighting sequences and modes or even controlling the luminaires remotely via wireless DMX. Examples include alternation in light setting per the hour, the day, the week, the month, as well as seasonal light settings, day vs. night settings, division of fixtures into groups, uniform branding of retail shops globally, etc. This ensures a very dynamic visual expression – even outside normal opening hours in for instance shop windows.

Using the C-5, you can easily and remotely prepare the light setting for any environment whether it be for installations in a museum, an exhibition, a center, a hall, a trade show, a club or a shop or any other application you could think of.

With a user-friendly interface, the opportunities to create vibrant and dynamic environments just became simple and straightforward. All preferred modes can be pre-scheduled so that you do not have to worry about turning your light system on or off in the future. Of course you also make alterations manually, if need to have sudden change from the regular pre-scheduled program. All of this can be done from a distance.

SGM DMX & Artnet



A-4 Art-Net to DMX Converter

The A-4 is a universal high-speed 4 port Art-Net to DMX converter. It is designed to be a very cost-effective, but high quality product, which can compete with the best performing products on the market today.

Advantages Include:

The A-4 Art-Net to DMX converter is 100% configurable by software to listen to any Art-Net universe on any subnet, and output this to any of the 4 DMX ports. Furthermore, the A-4 is designed especially for high-performance pixel-mapping applications, which makes it perfect for use in applications where many Art-Net universes are required.

The housing of the A-4 is extremely compact and rugged and is designed for touring as well as installations.



Artnet Configurator

Software configuration tool for SGM ArtNet products.

Artnet Configurator is a tool for configuring the A-4, ILD and TLD-612A products.

Advantages Include:

With this tool you can set the IP address, the Artnet Universe and the DMX Addresses of the product. The Artnet Configurator tool requires windows 7 or 8 (32 or 64 bit).



ILD Installation LED Driver

The ILD, Installation LED Driver, shares the majority of the features of the TLD-612A, but has a smaller and more compact power supply, which makes it suitable for permanent installations, where a small physical footprint is required.

Advantages Include:

The ILD is capable of driving either 6 pcs. of LT-100 tubes, 3 pcs. of LT-200 tubes or 3 pcs. of full length LB-100 strings (7 pcs. of LB-100 pr. string). The ILD is also IP65 rated and has daisy-chainable Ethernet for Artnet input, and it has a power consumption of maximum 120W.



TLD-612 A Touring LED Driver - Art-Net

The TLD-612A offers all the same features and driving capabilities as the regular TLD-612, with the variation of offering an Ethernet RJ45 Artnet interface instead of regular 5-pin XLR DMX interface.

Advantages Include:

The output of the TLD-612A is completely individually configurable by software, which makes it possible to send any channel range in any universe to each output. The Artnet interface is especially designed for high-speed / high-flow DMX, and thereby making it a perfect match for pixel mapping.

This makes the TLD-612A suitable for applications that require numerous DMX universes, at a cost-efficient level. This driver ensures quick and easy installation for touring.

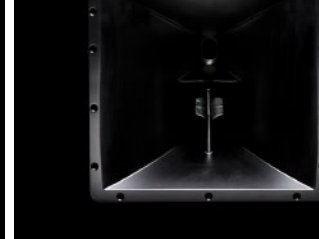
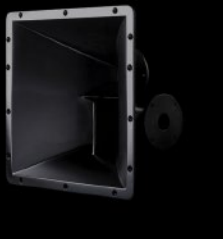


Utilising highly advanced point source speaker design, extremely efficient power management amplifier technology and totally unique hybrid signal processing, KV2 has created the first major advancement in large scale concert sound reinforcement since the development of the Line Array.

KV2 Audio's philosophy has always been to embrace the principles of point source speaker system design to provide optimum sound quality and coverage for applications and audiences of all sizes. The challenge for KV2 in building a large point source system for audiences of 50,000 people plus, was to reproduce the low mid energy that certain line arrays provide, though the summing of multiple drivers whilst maintaining the key benefits of point source technology. These benefits include minimal destructive interference in the higher frequency range, accurate impulse response and superior sound.

The VHD5.0 Constant Power Point Source System is a true feat of engineering. Over five years in development it brings the benefits of point source technology to large-scale concert sound reinforcement. The system delivers audio over large areas with clarity and definition simply not achievable from the digitally processed line arrays that are so commonly used today.

For some time now line arrays have been predominantly used for large concert sound systems. Having all components in a single axis array has solved certain issues in respect to comb filtering problems in the horizontal plane, but destructive interference still occurs from the multiple HF horns mounted vertically. The loss of high frequencies and cancellations through air disturbance caused by audience heat and wind is another major issue. Manufacturers have attempted to correct these problems in numerous ways both through acoustic design and DSP, however the end result has been further reductions in resolution, due to the limitations of digital sampling and the simple principles of physics that cannot be ignored.



VHD Series

The VHD High Performance Touring and Installation system from KV2 Audio has been designed to revolutionize the concert sound market by offering unparalleled quality, power, and coverage with huge cost savings in terms of size, weight, transportation, storage, and set up time. Challenging the popular trend of line array technology, VHD builds on the KV2 Audio philosophy of point source theory, offering drastically reduced distortion levels and a hugely increased dynamic range that takes us to a new level of sound reproduction previously unheard in large-scale audio systems.

VHD reduces the amount of elements needed to cover a particular area for large-scale sound reinforcement, thus removing the interference problems created by multiple sources in modern line array systems. Time alignment and phase correction is done via KV2's new 20MHz digital delay line. Boasting the highest sampling rate of any digital speaker processor available, KV2's on board hybrid signal processing uses the best in analog and digital technology to provide incredible definition and resolution with true dynamic range.



VHD1.0 Mid High/Down-fill Enclosure

The VHD1.0 downfill enclosure features a single 12" low mid woofer, an 8" trans-coil mid-range woofer and the same compression driver as the VHD2.0 on a wide angle 110° horizontal by 40° vertical horn.

Advantages Include:

The rear of the box has been angled for use as a downfill with the VHD2.0. Alternatively as a stand-alone box up to three VHD1.0s can be powered from a single VHD2000 amplifier. Like the VHD2.0, VHD1.0 is available in left and right versions for downfill applications. Designed to be powered as a slave from the VHD2.0 cabinet or directly from the VHD2000 amplifier, all equalization, set up and level are preset providing a plug and play solution for large scale touring and high quality installation.



VHD2.16 VHD Sub-woofer

The VHD2.16 double 15" sub-woofer is a development of KV2 Audio's ES 2.5 design that has become a standard for compact, high output sub-woofer devices.

Advantages Include:

Acoustical design is based on extreme loading of asymmetrical chambers delivering exceptional output and control. The cabinet is built to the same robust standards as the VHD4.18 and delivers output in excess of 140dB when configured in a pair. It also functions as a very effective upper bass cabinet when used alongside the ultra low frequency VHD1.21 or 2.21 sub-woofers as part of a five way active system.



VHD4.21 Active Passive Bass Module

What is Power without Control. In developing one of the most powerful sub-woofer solutions in the world today, our already successful VHD2.21 2x21" sub-woofer has evolved to incorporate a revolutionary new Sub-woofer Amplifier design.

Advantages Include:

Unique to KV2 and featuring Ultra High Current delivery, Immense Power, Exceptional Control, coupled with a class leading 'Green Efficiency' low consumption power supply. Housing two newly developed large format 21" Woofers the VHD4.21 Active can power an additional Passive VHD4.21 and deliver up to 14,000 Watts of peak power whilst being plugged in to a standard 16A wall socket. The VHD 4.21 is a truly Amazing product and demonstrates the Pinnacle of KV2's Pioneering Sub-woofer technologies.



VHD1.21 Ultra Low Frequency Enclosure

Single 21", Low Q band-pass sub-woofer system that adds extension and weight for applications where you want to feel, as well as hear, very high definition audio Working down to 23Hz with an efficiency for two boxes of 102dB.

Advantages Include:

It shares the same footprint as the other VHD sub-woofers in a compact lightweight easily transported package. Alongside the VHD2.16, it forms part of a remarkable five way active system.



VHD2.21 Ultra Low Frequency Sub-woofer

Originally designed for Super Live Audio as part of a VHD system, the VHD2.21 is voiced for both Live Music but also excels in the field of Club and Dance Music. In this situation it works very effectively, operating down to 25Hz, alongside other VHD products, the smaller ES range, or as an incredible stand-alone sub-woofer that can complement any other manufacturers systems.

Advantages Include:

Unlike traditional 21" sub-woofers that are typically designed as more of an effect sub-woofer, the VHD2.21 boasts tight, fast delivery and extreme dynamics, even at higher bass frequencies – qualities rarely found in such a large unit. One 2.21 can be driven by a single VHD3200. Whilst larger than KV2 Audio's existing sub-woofers it still fits in with the company's philosophy of providing maximum performance from within a compact footprint.



VHD2000 System Control and Amplification

The VHD2000 is the control and amplification unit for the VHD2.0. It is a three-way, rack-mounted unit containing high frequency, mid frequency and mid-bass amplifiers.

Advantages Include:

It also houses all processing and control electronics for the sub-woofer system. Our own hybrid signal processing utilises the very best technology available from both the analogue and digital worlds, to offer complete audio system control, equalisation, overdrive protection, thermal protection and user adjustable set up parameters. Time alignment and phase correction is done via KV2's new 20MHz digital delay line, boasting the highest sampling rate of any digital speaker processor available. Once the set-up process is completed, the VHD2000 manages all system functions and assures optimal performance.



VHD2.0 Touring and Installation Mid High Enclosure

A powerful long throw system for audiences of up to 20,000 people without requirement for additional delay systems.

Advantages Include:

A three-way design featuring a 3" compression driver with NVPD treated dome assembly, two horn loaded 8" speakers featuring AIC technology and two horn loaded 12" mid-bass speakers. All speakers employ neodymium magnets to increase force, improve control and lower weight. The VHD2.0 has an 80° horizontal and 40° vertical dispersion and left and right versions of the speaker are offered in order to create larger format vertical arrays of the mid high system.



VHD4.18 VHD Sub-woofer

The VHD4.18 is a quad 18" sub-woofer system, comprising of four individual loudspeaker cabinets. The objective is to make the system easy to transport and setup. When assembled, the VHD4.18 system becomes a high efficiency neodymium sub-woofer system with immense output.

Advantages Include:

The system was designed with very high sensitivity in mind; it provides 110 dB at 1W/1m and a tremendous output of 149dB when running at full power Each cabinet incorporates a large port area that becomes an optimized horn aperture when all four cabinets are stacked together. The quad 18" sub-woofer system delivers extreme output and controlled low frequency resolution.



VHD3200 Sub-woofer Amplifier

Power for the VHD sub-woofers is provided by the VHD3200 rack mounted sub-woofer amplifier.



ES Series

As the first product developed by KV2 and continually refined over the last decade, the ES Series has become renowned for its unique and versatile capabilities. Its performance has amazed audio professionals around the globe, staggered by the output and clarity of such a compact yet powerful system. The ES Series is an embodiment of KV2 Audio's design philosophies.

A truly scalable system, it is compact and modular with all the electronics and amplification housed in separate, portable units - the EPAK2500 and 2500R.

Placing the active electronics package outboard results in a lighter, easier to handle system with much more flexibility. Its compact size reduces transport costs and either ground stacked or flown it is quick and easy to setup cutting labour costs dramatically. The EPAK2500/R control unit incorporates four task specific amplifiers. Electronic crossover filters, time alignment, equalization, system protection, and level controls are all done on-board utilizing industry leading 20MHz digital conversion where required.



ES1.0 The Core of Your ES System

The ES1.0 is a 3-way, very high output, active-driven, mid-high / mid-bass module designed as part of a complete ES system, driven by the EPAK2500/R control and amplification unit.

Advantages Include:

The ES1.0 is compact, lightweight and can be combined with a variety of ES series sub-woofers. As a single system it offers one of the highest quality portable sound reinforcement solutions on the market today. When coupled with another ES1.0 (running two horizontally per side) it becomes an even more powerful tool, providing peak SPL of 139dB and a throw of up to 40 metres for applications of up to 3000 people.



ES1.5 Compact Active-Driven Sub-woofer

The ES1.5 is a single 15", extremely compact, high output sub-woofer weighing just 30.8 kg (67.9lbs) designed as part of the ES Series speaker system.

Advantages Include:

Used singularly or in multiples of up to three, alongside a single ES1.0 mid high cabinet, the system is powered by the EPAK2500/R Amplifier ensuring fast, easy set up with perfect balance and complete control. The EPAK2500/R also allows up to two ES1.5's to be used alongside an ES1.8, where the ES1.5 can either be flown alongside an ES1.0 or ground stacked with the ES1.8.



ES2.5 High Output Active-Driven Sub-woofer

The ES2.5 (4 ohms) is a double 15", high output sub-woofer designed for the ES Series speaker system.

Advantages Include:

Using new concepts in twin asymmetrical acoustic chambers they deliver very high speaker loading and intense output from a relatively small cabinet footprint. Reproducing low frequencies with very high transient content, they are ideal for use in live applications or as part of a five way ES system utilising VHD1.21 and 2.21 sub-woofers. Together with the ES1.0 and EPAK2500/R, the ES2.5/2.6 delivers the highest dynamic range of any other comparable system providing new levels of clarity, depth and resolution.



EPAK2500 Control of Your ES System

The EPAK2500 is a four-way, active control and amplification unit specifically designed for the ES Series modular loudspeaker system.

Advantages Include:

It not only houses all signal processing and four individual amplifiers but also controls the allocation of power depending on the number of bass modules employed. The EPAK2500 is enclosed in a road-rugged case with side handles and a built in cable storage compartment. Easily transported on a trolley this unique amplification system has its electronics mounted on an independent suspension system that isolates it from the shocks and impacts typically encountered on the road. A large aluminum heat sink provides passive cooling along with two demand-sensitive fans for added reliability.



ES1.8 High Output Active-Driven Sub-woofer

The ES1.8 is a high-output, reflex horn loaded, single 18" sub-woofer, designed as a part of the ES Series sound reinforcement system.

Advantages Include:

It provides tight, up front, low frequency extension with authority, attack and definition. Designed to be used in pairs, or with up to two ES1.5, the ES1.8 can achieve high output levels consistently and safely. Alongside the ES1.0 and EPAK2500/R, ES1.8 offers a very firm foundation on which to build a powerful ES system.



ES2.6 High Output Active-Driven Sub-woofer

The ES2.6 (8 ohms) is a double 15", high output sub-woofer designed for the ES Series speaker system.

Advantages Include:

Using new concepts in twin asymmetrical acoustic chambers they deliver very high-speaker loading and intense output from a relatively small cabinet footprint. Reproducing low frequencies with very high transient content, they are ideal for use in live applications or as part of a five way ES system utilising VHD1.21 and 2.21 sub-woofers. Together with the ES1.0 and EPAK2500/R, the ES2.5/2.6 delivers the highest dynamic range of any other comparable system providing new levels of clarity, depth and resolution.



EPAK2500R The Rack Mounted ES Solution

Rack mount version of our popular EPAK2500 four-way, active control and amplification unit specifically designed for the ES Series modular loudspeaker system.

Advantages Include:

Two shock mounted fans move air across the heatsinks which seal and protect the electronic components. This minimizes maintenance cycles and improves the components lifespan and reliability. Both the EPAK2500 and EPAK2500R utilize KV2's industry leading 20MHz sampling for on board time alignment and phase correction of all components in the ES system.



ESM Series

ESM12 The Ultimate Passive Monitor

The ESM12 is a full-range low profile 2-way, passive monitoring solution with a 12" trans-coil neo woofer and the same 3" NVPD large format compression driver found in our flagship VHD products.

Advantages Include:

The ESM12 also features our revolutionary passive delay line, which dramatically reduces feedback. Housed in a professional Baltic Birch cabinet, with a protective Polymer coating and heavy-duty grill, the ESM12 can be utilized for FOH applications with the inclusion of a pole mount. Truly one of the most impressive monitoring solutions on the market today, the ESM12 is available in left and right configurations.



ESM26 Ultimate Passive Monitor

The ESM26 is a purpose built stage monitor with incredible clarity and presence, especially in the all important vocal range.

Advantages Include:

Incorporating two high quality 6" drivers and a 1.75" compression driver on a 100 x 100 degree horn flare. The ESM26 utilises KV2's revolutionary delay line technology for optimum output and feedback rejection. A full width bass port along the bottom of the cabinet couples with the floor to deliver bass response comparable to monitors twice its size. Under 400mm wide this small monitor takes up minimal room on stage and is ideal for visually critical applications like TV and theatre.





SL Series

The new SL412 and SL2.15 speakers incorporate an eye catching slim stylish cabinet design. Designed to integrate either externally through simple wall mounting, suspension, ground stacking, or internally into walls and surfaces, these units can be designed and supplied with custom colors, grill templates and logos, offering a flexible and true designer integrated product. A single yoke assembly with multiple fixed angles and fixing locations, provides a quick and cost effective solution for simple suspension options.



SL412 Wide dispersion Active Driven System

The SL412 is a slim, discreetly profiled cabinet with wide dispersion at high frequencies. The four twelve inch speaker configuration provides controlled low-mid focus to reduce indoor reflection.

Advantages Include:

Its slim design allows for simple wall mounting, suspension, ground stacking or internal wall fixing. The SL412 can be designed and supplied with custom colours, grill templates and logos, offering a flexible and truly designer integrated product. A single horizontal yoke assembly with multiple fixed angles and fixing locations provides a quick and cost effective solution for simple suspension.



SL2.15 SL Bass Enclosure

The SL2.15 is a double 15" direct radiation sub-woofer system with augmented bass reflex.

Advantages Include:

Built to integrate aesthetically with the SL412 the SL2.15 produces deep bass from its slim cabinet design. Bass response is enhanced by coupling when the SL2.15 is used against or in a wall, providing optimum output for its small footprint. It also combines beautifully with the Ultra Low Frequency VHD1.21 and 2.21 sub-woofers as part of a five way active system.



SL3000 Amplifier - Rack mounted

The SL3000 Amplifier is a three-way, active control and amplification system specifically designed for the KV2 Audio SL Series modular loudspeaker systems.

Advantages Include:

The SL3000 Stereo Amplifier drives and controls one SL412 per channel and follows the typical KV2 holistic approach of matching components with high quality electronics for true direct performance. The SL3000 utilises a 1000-watt high efficiency – current enhancing, switch – mode technology, with linear active filter design for the low mid-section, a 200-watt class AB push pull low inter-modulation design amplifier for the mid-range and a similar 100-watt design for the high frequencies. It houses all time alignment, phase correction, amplification and equalisation as well as providing an external sub-woofer crossover output to run further sub-woofer cabinets if needed.



The world is full of passive speakers using basic and often inefficient passive networks with the simple aim of offering an affordable easy to install solution when attached to any amplifier available. The results however are often far from acceptable due to poor phase coherency through a minimal crossover circuit and time misalignment between components.

Add to this high distortion from low cost amplifier designs and you have a speaker highly susceptible to feedback with very poor fidelity. The growth of active speaker technology has provided suitable advances in resolving some of these issues, however there are economical advantages in installing passive speakers that can still provide high quality reproduction if done properly. When KV2 Audio decided to add a passive line to our growing range of speakers we looked at how we could improve the design of a passive [analog delay line] crossover network to achieve the best possible sound quality. Drawing on our deep experience in active technology we developed an analog delay line circuit that would provide time alignment and phase correction passively, substantially improving clarity and definition. Combined with our Active Impedance Control, the results are simply stunning.

ESD1.12 Compact Passive Sub-woofer

The ESD1.12 is a passive version of the active EX1.2 12" sub-woofer and features the same high quality ferrite woofer.

Advantages Include:

This sub-woofer's low profile and size makes it ideal for discreet applications. With power handling of 600 watts the ESD1.12 is capable of delivering tight, fast, controlled bass response at high output levels from a compact cabinet.

ESD1.15 Compact Passive Sub-woofer

The ESD1.15 is a passive sub-woofer system featuring a single 15" ferrite woofer with a 600W power handling capability.

Advantages Include:

Offering peak SPL of 130dB the ESD1.15 produces considerable output yet in true KV2 style retains a compact footprint. Multiple units of ESD1.15's can be stacked together to create a powerful and scalable sub-woofer system.

ESD1.18 Passive Sub-woofer

The ESD1.18 is the passive version of the incredible active EX1.8.

Advantages Include:

The ESD1.18 features neodymium woofer with power handling capabilities of 1000W which makes a firm foundation from which to build an incredibly powerful ESD system, or as a stand alone sub-woofer to enhance any existing passive or active

ESD5 The Ultimate Compact Passive System

The ESD5 is a very high quality 2-way full-range compact low profile passive loudspeaker with performance that defies its size.

Advantages Include:

Delivering exceptional clarity for speech and program reproduction, the ESD5 is perfect for discreet installations and audio visual presentations where sound quality is paramount, but aesthetic dimensions are of equal importance. The ESD5's high impedance capability means that up to sixteen units can be run from a single suitable quality stereo amplifier, to provide a high fidelity background program throughout a venue.

ESD6 The Ultimate Compact Passive System

The ESD6 is a high quality 2-way full-range compact passive loudspeaker with output that defies its size.

Advantages Include:

Delivering amazing clarity for speech and program reproduction, the ESD6 is perfect for discreet installations and audio visual presentations where sound quality is paramount but size also matters. The ESD6's high impedance capability means that up to sixteen units can be run from a single suitable quality stereo amplifier to provide a high fidelity background program throughout a venue.

ESD10 The Ultimate Compact Passive System

The ESD10 is a compact passive 2-way, high output, full-range loudspeaker incorporating a 10" trans-coil woofer and a wide dispersion rotatable horn.

Advantages Include:

The ESD10 provides a smooth hi fidelity response and delivers sound quality and level that is superior to many larger competing products. Ideal as a main system speaker or as an fill-in for larger systems. The ESD10 is an all round affordable passive solution that simply exudes quality.

ESD12 The Ultimate Passive System

The ESD12 is a high quality 2-way, passive full range loudspeaker that provides unmatched clarity and definition in a simple elegant package.

Advantages Include:

The ESD12 utilizes a 12" Trans Coil woofer and the same 3" NVPD large format compression driver found in our flagship VHD products, which has one of the lowest distortion ratings on the planet. Combined with our unique delay line technology the ESD12 delivers a beautifully balanced, phase coherent and accurate compact, 2-way passive solution that is adaptable to a wide range of applications.

ESD36 The Ultimate Passive Compact 3-way System

One of the more unique loudspeakers offered by KV2 Audio the ESD36 is a passive, full-range 3-way speaker system for speech and music reproduction.

Advantages Include:

The ESD36 features a 6" driver dedicated to high quality mid-range reproduction and a further two low frequency 6" drivers for enhanced bass extension. Alongside the same compression driver as featured in the popular EX6, the ESD36 offers comparable performance to many 12" cabinets with an enhanced vocal performance from this 3-way design.

ESP2000 Rack mounted, High definition amplifier

The ESP2000 amplifier incorporates KV2's SLA design principles, delivering very low distortion characteristics, even under extreme operation.

Advantages Include:

Equally at home as a reference amplifier in a high-end recording studio or driving a large-scale live audio system, the ESP2000 is a sonically superb unit featuring Class H amplifier. The ESP2000 incorporates the same cooling system as other KV2 amplifiers where only the heat sinks are exposed protecting the internal electronics. Robust enough for the harshest touring or installation environments the ESP2000 will provide years of trouble-free performance, delivering absolutely pristine audio.

"Drawing on our deep experience in active technology we developed an analog delay line circuit that would provide time alignment and phase correction passively, substantially improving clarity and definition."

ESP4000 Rack mounted, high definition amplifier

The ESP4000 is an ultra high definition 4 channel rack mountable power amplifier from KV2 Audio, specifically designed for optimised performance with ESD loudspeakers, as well as with other passive systems.

Advantages Include:

For the ESP4000 all electronic circuit boards are first mounted on individual aluminum heat sinks, then on a secondary, internally sealed chassis, this leaves only the heatsink fins exposed. Two separate power supplies ensure increased reliability and continuous delivery of full power. Two shock mounted fans move air across the fins but never directly across the electronic components. This minimises maintenance cycles and improves the components lifespan and reliability. The ESP4000 is housed in a professional 4U road rugged steel metal case with aluminum handles and evenly distributed weight.



ESR Series

The ESR range has been developed for a particular niche in the market where an all in one box is needed to give clear detailed reproduction over a wide area. The ESR212 and 215 are three way full range enclosures with wide dispersion

characteristics. They can be used vertically for theatre, church or cultural center type installations or horizontally mounted to give excellent coverage over a tiered seating area for stadium or grandstand type applications.



ESR212 The Ultimate Full Range System

The ESR212 is a full-range 3-way loudspeaker system designed for use with the ESR2800 tri-amplified stereo electronic control pack.

Advantages Include:

The ESR212 loudspeaker system features state of the art transducer design. Comprising of two 12" woofers, a 6" midrange driver and a 1" compression driver, the ESR212 delivers full range high definition audio over large spaces. It has a dispersion of 90 degrees by 40 degrees and can be installed either vertically or horizontally. The ESR212 has multiple M10 fly points as well as custom designed fly-ware and brackets.



ESR3000 Amplifier - Rack mounted

The ESR3000 is three-way, active control and amplification system specially designed for the KV2 Audio ESR full range series loudspeaker systems.

Advantages Include:

It houses all signal processing and amplification, as well as providing control and crossover function an external sub-woofer cabinet if needed utilizing an external amplifier. The ESR3000 powers the ESR215. Each unit incorporates six amplifiers consisting of two 100-watt, Class AB, push pull, low inter-modulation amplifier for high frequencies, two 200-watt, Class AB, push pull, low inter-modulation design for mids and two a 1000-watt, high-efficiency, current- enhancing switch mode technology amplifier for bass. The ESR3000 stereo configuration powers two ESR cabinets accordingly.



ESR2800 Amplifier - Rack mounted

The ESR2800 is three-way, active control and amplification system specially designed for the KV2 Audio ESR full range series loudspeaker systems.

Advantages Include:

It houses all signal processing and amplification, as well as providing control and crossover function an external sub-woofer cabinet if needed utilizing an external amplifier. The ESR2800 powers the ESR212. Each unit incorporates six amplifiers consisting of two 100-watt, Class AB, push pull, low inter-modulation amplifier for high frequencies, two 200-watt, Class AB, push pull, low inter-modulation design for mids and two 1000-watt, high-efficiency, current- enhancing switch mode technology amplifiers for bass. The ESR2800 stereo configuration powers two ESR cabinets accordingly.



ESR215 The Ultimate, Full Range, Large Scale System

The ESR215 is a large scale full-range 3-way loudspeaker system with a wide horizontal dispersion of 110 degrees.

Advantages Include:

Designed for use with the ESR3000 tri-amplified stereo electronic control pack, the ESR215 loudspeaker system features two 15" woofers, an 8" mid-range driver and the same large scale NPVD 3" compression driver found in KV2 Audio's VHD mid-hi enclosures. With a wide and smooth frequency response the ESR215 is ideal for theatre or stadium applications. Like the ESR212, it incorporates multiple M10 fly points and various brackets and fly-ware are also available.

“...Providing control and crossover function an external sub-woofer cabinet if needed utilizing an external amplifier.”



SL Series

The new SL412 and SL2.15 speakers incorporate an eye catching slim stylish cabinet design. Designed to integrate either externally through simple wall mounting, suspension, ground stacking, or internally into walls and surfaces, these units can be designed and supplied with

custom colors, grill templates and logos, offering a flexible and true designer integrated product. A single yoke assembly with multiple fixed angle and fixing locations, provides a quick and cost effective solution for simple suspension options.



SL2.15 SL Bass Enclosure

The SL2.15 is a double 15" direct radiation sub-woofer system with augmented bass reflex.

Advantages Include:

Built to integrate aesthetically with the SL412 the SL2.15 produces deep bass from its slim cabinet design. Bass response is enhanced by coupling when the SL2.15 is used against or in a wall, providing optimum output for it's small footprint. It also combines beautifully with the Ultra Low Frequency VHD1.21 and 2.21 sub-woofers as part of a five way active system.



SL412 Wide dispersion Active Driven System

The SL412 is a slim, discreetly profiled cabinet with wide dispersion at high frequencies.

Advantages Include:

The four twelve inch speaker configuration provides controlled low-mid focus to reduce indoor reflection. Its slim design allows for simple wall mounting, suspension, ground stacking or internal wall fixing. The SL412 can be designed and supplied with custom colours, grill templates and logos, offering a flexible and truly designer integrated product. A single horizontal yoke assembly with multiple fixed angles and fixing locations provides a quick and cost effective solution for simple suspension.

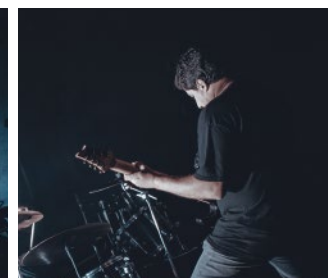
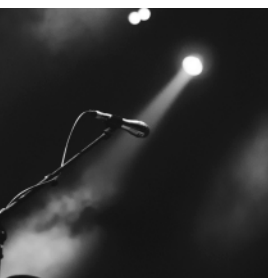


SL3000 Amplifier - Rack mounted

The SL3000 Amplifier is a three-way, active control and amplification system specifically designed for the KV2 Audio SL Series modular loudspeaker systems.

Advantages Include:

The SL3000 Stereo Amplifier drives and controls one SL412 per channel and follows the typical KV2 holistic approach of matching components with high quality electronics for true direct performance. The SL3000 utilises a 1000-watt high efficiency – current enhancing, switch – mode technology, with linear active filter design for the low mid-section, a 200-watt class AB push pull low inter-modulation design amplifier for the mid-range and a similar 100-watt design for the high frequencies. It houses all time alignment, phase correction, amplification and equalisation as well as providing an external sub-woofer crossover output to run further sub-woofer cabinets if needed.





EX Series

There are lots of powered speakers, but at KV2 Audio building an active speaker goes beyond bolting a Class D amplifier to the back of a box. We work towards creating the best technology in each distinct discipline, and then integrate each step into a powerful package within the context of a truly remarkable audio system. The EX range represents the pinnacle in small format active technology available in the world today. The market has been flooded with active speakers since their popularity

flourished in the late nineties. It was indeed KV2's founder George Krampera that led this revolution with the development of the ART range at RCF. George soon realized the true secret to active loudspeaker design was not just building powered speakers but developing amplifiers that are perfectly matched to the transducers so every component is optimized.



EX1.2 MkII Ultra Compact Active Sub-woofer

The EX1.2MkII is a compact single 12" active sub-woofer system. As with all KV2 Audio products the EX1.2MkII boasts output that belies its compact, low profile cabinet size.

Advantages Include:

This low profile design makes it ideal for discreet installations as it can be installed either horizontally or vertically. Featuring KV2 Audio's switching amplifier technology the EX1.2MkII delivers tight, fast and controlled bass response at very high output levels from an impressively small cabinet footprint.



EX2.5 MkII Low Frequency Solution

The EX2.5MkII is a double 15" sub-woofer and the 'active' brother of the ES2.6 passive bass module. It provides real depth and power where high bass output is required.

Advantages Include:

The product uses the same low frequency amplifier found inside the EPAK2500/2500R and features in-built stereo crossovers, high pass outputs, and full overdrive protection. It also features a new speaker level output on an AP4 connector to drive one additional passive ES2.6 sub-woofer from its own internal amplifier. (Not to be used with a passive ES2.5)



EX10 Active High Resolution Speaker System

The EX10 is a very compact 2-way, high-output, full range active speaker system.

Advantages Include:

Despite its 10" woofer and remarkably small footprint it successfully takes on many larger 12" models and is favored by audio visual and rental companies all over the world for its sheer quality and tremendous output. On-board electronics ensure fast, easy set up and complete control with electronic crossovers, phase alignment, equalization and speaker protection integrated into the EX10's amplifier module.



EX1.8 High Output Active Sub-woofer

The EX1.8 is a high output single 18" sub-woofer housing a revolutionary VHD technology neodymium woofer.

Advantages Include:

The EX1.8 features an impressive 1000 watts of power courtesy of KV2 Audio's switching amplifier technology and provides a very firm foundation on which to build a powerful EX system, or as a standalone sub-woofer for any existing system.

"We work towards creating the best technology in each distinct discipline, and then integrate each step into a powerful package within the context of a truly remarkable audio system."



EX2.2 Active Bass Module

The EX2.2 is a double 12", compact, active sub-woofer system.

Advantages Include:

On-board electronics include a stereo crossover with high pass outputs and full overdrive protection. Featuring KV2 Audio's switching amplifier technology, precision manufactured woofer designs and a high efficiency, twin chamber acoustic design, the EX2.2 delivers tight, fast, controlled bass response at very high output levels from a small cabinet footprint.



EX6 The Ultimate Compact Active System

The EX6 is a very high quality compact speaker system producing a 2-way full range solution, which defies its size.

Advantages Include:

With amazing clarity for musical reproduction, the EX6 is perfect for discreet installations or audio visual presentations where sound quality is paramount but size also matters. The EX6 features state of the art components including NVPD compression driver, 6" woofer and complete on-board control with electronic crossovers, phase alignment, equalization and speaker protection integrated into the EX6's amplifier module.



EX26 High Intelligibility Active Speaker System

The EX26 is a unique Loudspeaker unit that provides superb vocal intelligibility and high quality musical reproduction.

Advantages Include:

Its 100 x 100 degree horn provides for wide, even coverage making it ideal for audio visual presentations, churches, meeting rooms and various other applications where high quality speech reproduction is required. The EX26 makes an ideal under balcony fill speaker when used in a horizontal orientation.





Q1 Professional pen torch with focus

A pure Suprabeam classic in a reliable small size. For the technician in demanding work situations, it is essential with the best gear available. The Q1 provides remarkable power and comes in a convenient size for your pocket.

It uses only 2xAAA Battery and lasts up to 8 hours, with a weight of only 56 grams.

Product Features:

LED: 1 CREE Power Chip
Case: Anodized, Aluminum
Color: Anthracite Dark Grey
Switch: Quality Tested Metal
Dimensions: L: 141,5mm, ø 15mm
Weight: 56g
IP Rating: Splash Waterproof IPx4
Temperature: -20°C to +50°C
Controller: YES, 2-step controller
Power Source: 2 x AAA
Beam Distance: < 70 meters
Luminous Flux: 100 LM / 20 LM
Lighting Time: < 10 hours
Accessories: Attachment clip



Prime Ultra mini pen torch

The Q1prime is our smallest torch ever made, but still it remains powerful and with a true Suprabeam light experience.

It has an essential functionality with on/off and fixed spotlight, which makes it highly suitable for keyring and easy to operate. Altogether the Q1prime weighs just 30 grams and is the ultimate combination of miniature and power.

Product Features:

LED: 1 CREE Power Chip
Case: Anodized, Aluminum
Color: Anthracite Dark Grey
Switch: Quality Tested Metal
Dimensions: L: 75,8mm, ø 14,6mm
Weight: 30g
IP Rating: Splash Waterproof IPx4
Temperature: -20°C to +50°C
Controller: YES, On/Off
Power Source: 1 x AAA
Beam Distance: < 60 meters
Luminous Flux: 90 LM
Lighting Time: < 50 minutes
Accessories: Keyring



Q1 mini Mini pen torch with focus

Miniature in size but surprisingly powerful. It is equipped with our Hyper-Focus system and combined with the latest LED Power-Chip technology.

Perfect for keyring, providing security and convenience or for the technician's pocket. Uses just 1xAAA Battery and lasts up to 5 hours, with a weight of only 38 grams.

Product Features:

LED: 1 CREE Power Chip
Case: Anodized, Aluminum
Color: Anthracite Dark Grey
Switch: Quality Tested Metal
Dimensions: L: 98mm, ø 15mm
Weight: 38g
IP Rating: Splash Waterproof IPx4
Temperature: -20°C to +50°C
Controller: YES, 2-step controller
Power Source: 1 x AAA
Beam Distance: < 60 meters
Luminous Flux: 80 LM / 20 LM
Lighting Time: < 5 hours
Accessories: Attachment clip and keyring



Q2 Small torch with sliding focus

Using the larger Hyperfocus™ system from the Q3, it remains smaller, more light weight and yet powerful even though it is only powered by 1 x A. The practical sliding focus provides one handed fast change of the beam angle.

Small and remarkably powerful with 170 lumens and a range of 150 meters.

Product Features:

LED: 1 CREE Power Chip
Case: Anodized, Aluminum
Color: Anthracite Dark Grey
Switch: Quality Tested Metal
Dimensions: L: 116mm, ø 26mm
Weight: 80g
IP Rating: Splash Waterproof IPx4
Temperature: -20°C to +50°C
Controller: YES, 2-step controller
Power Source: 1 x AAA
Beam Distance: < 150 meters
Luminous Flux: 170 LM / 30 LM
Lighting Time: < 5 hours
Accessories: Pouch w/ velcro & Press Stud, Strap



Q3 Powerful compact torch

Compact and extremely powerful, perfect for the professional user, who needs a powerful torch. Belt or Pocket - Ergonomic ease of use for long range and inspection viewing.

Delivers an impressive 320 lumens with only 3 x AAA batteries, and will last up to 60 hours on low.

Product Features:

LED: 1 CREE Power Chip
Case: Anodized, Aluminum
Color: Anthracite Dark Grey
Switch: Quality Tested Metal
Dimensions: L: 115,3mm, ø 26,5mm
Weight: 99g
IP Rating: Splash Waterproof IPx4
Temperature: -20°C to +50°C
Controller: YES, 5-step controller
Power Source: 3 x AAA
Beam Distance: < 230 meters
Luminous Flux: 320 LM
Lighting Time: < 60 hours
Accessories: Pouch with Velcro & Press Stud, Strap



Q3 classic Mini pen torch with focus

With one step and fixed spotlight the compact and powerful Q3 classic is perfect for the professional user or enthusiast, who needs a torch with a classic and powerful output with just one click.

Ergonomic ease of use for long range and inspection viewing with just one step and fixed spotlight - the perfect solution.

Product Features:

LED: 1 CREE Power Chip
Case: Anodized, Aluminum
Color: Anthracite Dark Grey
Switch: Quality Tested Metal
Dimensions: L: 115,3mm, ø 26,5mm
Weight: 96g
IP Rating: Waterproof (up to 1m) IPx8
Temperature: -20°C to +50°C
Controller: YES
Power Source: 3 x AAA
Beam Distance: < 210 meters
Luminous Flux: 80 LM / 20 LM
Lighting Time: < 20 hours
Accessories: Pouch w/ Velcro & Press Stud, Strap



Q3 Defend Tactical torchfocus

Our second edition of the iconic and popular defend torches. With a unique soft touch urethane coating, it is bringing the best parts of the Q7defend in a waterproof, classic and much light edition. The extremely compact and powerful Q3 defend is highly durable and combines state-of-the-art technology with a brilliant design and quality experience.

Product Features:

LED: 1 CREE Power Chip
Case: Anodized, Aluminum with a soft touch urethane coating
Color: Tactical Black
Switch: Solid Silicone button with Touch
Dimensions: L: 124mm, ø 27mm
Weight: 99g
IP Rating: Waterproof (up to 10m) IP68
Temperature: -20°C to +50°C
Controller: YES, One step
Power Source: 3 x AAA
Beam Distance: < 210 meters
Luminous Flux: 280 LM
Lighting Time: < 20 hours
Accessories: Pouch w/ Magnetic lock & Press Stud, Strap



Q3r Powerful compact rechargeable torch

Rechargeable power brought in to our compact Q3 design. Equipped as standard with 2 rechargeable Li-ion cells, Hyperfocus™ and the latest LED PowerChip technology. It adds up to one of the highest "power-in-class" output of 400 Lumens! And with 2 batteries as standard, you can keep going.

Product Features:

LED: 1 CREE Power Chip
Case: Anodized, Aluminum
Color: Anthracite Dark Grey
Switch: Quality Tested Metal
Dimensions: L: 127,7mm, ø 26,5mm
Weight: 139g
IP Rating: Splash Waterproof IPx4
Temperature: -20°C to +50°C
Controller: YES, 5-step controller
Power Source: Li-Ion 18650 (8.14 Wh)
2 pcs. included
Charging time: 3 hours 45 min
Beam Distance: < 245 meters
Luminous Flux: 400 LM / 250 LM / 50 LM / 15 LM / Strobe 10 Hz
Lighting Time: < 89 hours
Accessories: Quality Pouch with Velcro and Press Stud, Strap, 100-240VAC Adaptor with USB cable and external ICR 18650 Charger



Q4xr Powerful compact rechargeable torch

Sporty and rechargeable power in a distinctive compact design. Developed and designed to the user who demands extreme power in a compact size. The torch is made from a High Strength Aluminum, which makes it more durable and resistant than what you normally find in a torch. It adds up to an output of 680 Lumens! With a total weight of only 132g.

Product Features:

LED: 1 CREE Power Chip
Case: Anodized, Aluminum
Color: Anthracite Dark Grey
Switch: Quality Tested Metal
Dimensions: L: 134mm, ø 32mm
Weight: 132g
IP Rating: Splash Waterproof IPx4
Temperature: -20°C to +50°C
Controller: YES, 5-step controller
Power Source: 1 x 18650 Li-Ion (8.14 Wh)
2 pcs. included
Charging time: 3 hours 45 min
Beam Distance: < 250 meters
Luminous Flux: 680 LM / 350 LM / 200 LM / 50 / Strobe 10Hz
Lighting Time: < 24 hours
Accessories: Pro. Quality Pouch with Velcro and Press Stud, Strap, 100-240VAC Adaptor with USB cable and external ICR 18650 Charger



Q7compact Compact powerful torch

Compact torch, powered by 4 x AAA standard batteries.

Designed by our engineers with scientific precision and nothing left to be uncertain. We equipped it with the latest HighPower Cree LED-Chip and HyperFocus system.

The special designed Heat-Sink Thermal Management, insures a perfect user experience by diverting the heat throughout the core structure.

Product Features:

LED: 1 CREE Power Chip
 Case: Anodized High Strength Aluminum
 Color: Anthracite Dark Grey
 Switch: Solid Silicone button with Touch
 Dimensions: L: 134mm, ø 39mm
 Weight: 196g
 IP Rating: Splash Waterproof IPx4
 Temperature: -20°C to +50°C
 Controller: YES, 5-step controller
 Power Source: 4 x AAA
 Beam Distance: < 220 meters
 Luminous Flux: 350 LM / 200 LM / 50 LM / 15 / Strobe 10 Hz
 Lighting Time: < 75 hours
 Accessories: Pro. Quality Pouch with Velcro and Press Stud, Strap



Q7defend Tactical torch

An iconic tactical torch coloured in black with a unique soft touch urethane coating surface. Combining state-of-the-art technology and an aesthetic design, we are once again redefining the market of flashlights. The Q7defend is the ultimate expressions of a tactical torch, made by skilled craftsmen to professional users who require the best tools available on the market.

Product Features:

LED: 1 CREE Power Chip
 Case: Anodized, Aluminum with a soft touch urethane coating
 Color: Tactical Black
 Switch: Solid Silicone button with Touch
 Dimensions: L: 139,3mm, ø 39mm
 Weight: 212g
 IP Rating: Splash Waterproof IPx4
 Temperature: -20°C to +50°C
 Controller: YES, 5-step controller
 Power Source: 4 x AAA
 Beam Distance: < 220 meters
 Luminous Flux: 350 LM / Strobe 10 Hz / 200 LM / 50 LM / 15 LM
 Lighting Time: < 75 minutes
 Accessories: Pro. Quality Pouch With Silent Magnet lock



Q7r Rechargeable torch

High-Performance Rechargeable torch.

Equipped with High-Capacity Li-ion cells, Constant Current control electronics, latest High-Power LED-Chip and combined with our Hyperfocus™ system, this torch delivers an incredible light output.

Product Features:

LED: 1 CREE Power Chip
 Case: Anodized High Strength Aluminum
 Color: Anthracite Dark Grey
 Switch: Solid Silicone button with Touch
 Dimensions: L: 146mm, ø 39mm
 Weight: 241g
 IP Rating: Splash Waterproof IPx4
 Temperature: -20°C to +50°C
 Controller: YES, 4-step controller
 Power Source: Li-ion 26650 (14.8 Wh)
 2 pcs. included
 Beam Distance: < 225 meters
 Luminous Flux: 300 LM / 200 LM / 50 LM / Strobe 10 Hz
 Lighting Time: < 20 hours
 Accessories: Pro. Quality Pouch with Velcro and Press Stud, Strap, 100-240VAC Adaptor with USB cable and external ICR 26650 Charger



Q7xr Powerful rechargeable torch

The most technologically advanced rechargeable torch in Suprabeam history. We created a torch that pushes the boundaries of light.

The reflector is machined out of massive aluminum, designed to give you a minimum loss of light. Together with the Thermal Management Heat-sink the Q7xr will perform with a maximum light output till the battery is drained completely.

Product Features:

LED: 1 CREE Power Chip
 Case: Anodized High Strength Aluminum
 Color: Anthracite Dark Grey
 Switch: Solid Silicone button with Touch
 Dimensions: L: 150mm, ø 46mm
 Weight: 307g
 IP Rating: Splash Waterproof IPx4
 Temperature: -20°C to +50°C
 Controller: YES, 5-step controller
 Power Source: Li-ion 26650 (18.5 Wh)
 2 pcs. included
 Charging Time: 6 hours 30 min
 Beam Distance: < 345 meters
 Luminous Flux: 900 LM / 600 LM / 200 LM / 50 LM / Strobe 10 Hz
 Lighting Time: < 37 hours
 Accessories: Pro. Quality Pouch with Velcro and Press Stud, Strap, 100-240VAC Adaptor with USB cable and external ICR 26650 Charger



V3air Light weight headlamp

An essential companion on the pursuit of adventure. Designed with freedom and weightlessness in mind, to ensure maximum comfort and ease operation.

The headlamp is equipped with a minimized battery pack containing 3 x AAA batteries, but keeping a fully electronic control system, durable switch and proven efficiency on the light curve - it offers best power to cost ratio.

Product Features:

LED: 1 CREE Power Chip
 Case: Hi-Tech Compound / Aluminum
 Color: Anthracite Dark Grey
 Switch: Metal Switch Below Head
 Headband: Fits to 50-70 centimeters
 Dimensions: L: 124mm, ø 27mm
 Weight: 140g
 IP Rating: Splash Waterproof IPx4
 Temperature: -30°C to +60°C
 Controller: YES, 4-step controller
 Power Source: 3 x AAA
 Beam Distance: < 195 meters
 Luminous Flux: 250 LM / Dimmer 8-150 LM
 Lighting Time: < 100 hours
 Accessories: Removable, Washable Headband



V3air rechargeable Light weight headlamp torch

Achieve remarkable efficiency without ever compromising performance. Introducing the ultimate power-to-cost rechargeable lightweight headlamp. Fitted as standard with a minimized battery pack but keeping fully electronic control system.

Delivers an impressive 320 lumens from a lightweight 1400 mAh Li-ion battery.

Product Features:

LED: 1 CREE Power Chip
 Case: Hi-Tech Compound / Aluminum
 Color: Anthracite Dark Grey
 Switch: Metal Switch Below Head
 Headband: Fits to 50-70 centimeters
 Weight: 148g
 IP Rating: Splash Waterproof IPx4
 Temperature: -30°C to +60°C
 Controller: YES, 4-step controller
 Power Source: 1 x 1400 mAh Li Polymer 10.36Wh
 1 pcs. included
 Charging Time: 3 hours
 Beam Distance: < 210 meters
 Luminous Flux: 320 LM / Dimmer 10-250 LM
 Lighting Time: < 100 hours
 Accessories: Removable, Washable Headband, USB-cable





V3pro Light weight headlamp

For over a decade professional light tools has been the heart of our business. The powerful LED headlamp V3pro, is designed with a meticulous attention to detail combining all of our experience in premium headlamps.

Equipped with an array of our advanced technologies including a unique plug system for maximum versatility, and fully electronic control system with Dimmer and Memory features.

Product Features:

- LED: 1 CREE Power Chip
- Case: Hi-Tech Compound / Aluminum
- Color: Anthracite Dark Grey
- Switch: Metal Switch Below Head
- Headband: Fits to 50-70 centimeters
- Weight: 170g
- IP Rating: Splash Waterproof IPx4
- Temperature: -30°C to +60°C
- Controller: YES, 4-step controller
- Power Source: 4 x AAA
- Beam Distance: < 210 meters
- Luminous Flux: 320 LM / Dimmer 10-200 LM
- Lighting Time: < 100 hours
- Accessories: Pro. Quality Pouch with Velcro and Press Stud, Removable cable, Washable Headband



V3pro rechargeable Light weight headlamp

The V3pro rechargeable is the culmination of our proud cutting edge craftsmanship. It brings together astonishing performance and brilliant design in a light weight solution.

Fitted as a standard with Hyperfocus™, Adjustable angle, Interchangeable cable and carefully developed electronic software, which will perform with a Constant Current Light output till the batteries are completely drained.

Product Features:

- LED: 1 CREE Power Chip
- Case: Hi-Tech Compound / Aluminum
- Color: Anthracite Dark Grey
- Switch: Metal Switch Below Head
- Headband: Fits to 50-70 centimeters
- Weight: 184g
- IP Rating: Splash Waterproof IPx4
- Temperature: -30°C to +60°C
- Controller: YES, 4-step controller
- Power Source: 1 x 2800 mAh Li Polymer 10.4Wh
- 1 pcs. included
- Charging Time: 5 hours 15 min
- Beam Distance: < 245 meters
- Luminous Flux: 400 LM / Dimmer 12-280 LM
- Lighting Time: < 100 hours
- Accessories: Pro. Quality Pouch with Velcro and Press Stud, Removable cable, Washable Headband, 100-240VAC adaptor with USB Charging Cable



V4pro rechargeable

A new era of light

The V4pro rechargeable is the most technologically advanced headlamp in Suprabeam history.

It has been developed based upon feedback and wishes from active sport exercisers, using headlamps in their daily workout. Based on their feedback we have created the ultimate headlamp, for active people craving the utmost when it comes to portable lighting.

The harmony of our hyper-focus optical precision lens technology and Cree's superb power chip LED allows us to reach a balance between operating time and high-power light output.



Accessories



12/24vdc USB charger



Bike holder



Bike mount



Fast Rail
Helmet Mount



Li-ion 18650
rechargeable



Li-ion 26650
rechargeable



Multi Charging
Bay 18650 / 26650



Q3 Camping bulb



Colour Filters



Traffic wands



Safety Helmet
Mount



2:8 A/B Splitter XPD-28

XPD-28 splitters boost, refresh and distribute the DMX signals of two inputs onto eight outputs. This allows for safely going beyond the 32 devices limit of the DMX standard, as well as for building star topologies. Moreover, the XPD-28 can be used as a repeater in order to transport a DMX signal across larger distances just as well. With XPD-28s you determine at the push of a button, to which input universe each output is connected. This allows for optimally utilizing the output ports in all situations.

Thanks to ten output modes, you can always rely on the XPD-28 being able to generate an output signal that's also understood by your legacy equipment. In spite of its features, the XPD-28 remains easy to operate with the help of an encoder wheel and eleven additional push buttons. The OLED display of the XPD-28 contributes to the intuitive operation as well and provides valuable key information on the incoming signals, which can be most helpful when you need to trouble shoot or set up a larger installation. What is more, as a fully RDM compatible, bidirectional splitter, XPD-28 is a future proof piece of equipment.

Product Features:

- DMX splitter / booster
- RDM capable (bidirectional)
- 19 inch rack mountable, 1 height unit
- 10 output modes
- 2 failure behaviors
- Optically isolated
- Neutrik powerCON input and output
- Universal power supply
- Graphical overview of channel values
- Display of the refresh rate
- Can be used as a DMX "decelerator"



DMX Splitter / Booster XSP Series

DMX splitters are the backbone of any DMX512 installation. The XSP series of splitters offer the highest level of reliability for professional use for events or on installations. The specially designed power supply ensures safe operation even under harsh mains conditions. Each port is optically isolated and very well protected against transient over voltages. The DMX signal is regenerated and boosted while the DMX protocol timing is not modified. The XSP splitter reduces reflection problems and allows splitting the DMX signal across multiple lines.

An integrated micro-controller constantly monitors the DMX protocol and indicates the presence of DMX signal or an error with the DMX.

In order to meet a variety of applications, there are a variety of XSP models. The XSP box models have a thread for a clamp and an eye for the safety line. These models are portable and suitable for truss mounting. The rack and double rack models are for 19" rack systems. There are different types of connectors with 5-pin XLR, 3-pin XLR and pluggable screw terminals. Installation versions for wall mounting and direct wiring are also available.

Product Features:

- High level of reliability
- Boosts DMX
- Regenerates DMX
- Reduces reflection problems
- Distributes DMX
- Individual optical isolation per port
- Connector types: 5-pin and 3-pin XLR and pluggable screw terminals models
- Housing types: Installation, box, rack and double rack models, rear entry
- 5 DMX outputs per universe / 10 outputs for the double-rack versions
- DMX line termination



RDM & DMX Splitter / Booster XSR Series

The splitters of the SWISSON XSR series are reliable DMX and RDM splitters and boosters that process DMX and RDM signals with a high level of reliability for professional applications. The XSR has a specially designed power supply which ensures safe operation even under harsh mains conditions. All ports are individually optically isolated and well protected against transient over voltages.

In the "DMX-only" mode all non-DMX data is filtered out and a clean signal without RDM or other protocols is generated. The XSR splitters are "discoverable", and are visible to RDM controllers. This gives the user a better overview of the installation and helps with trouble shooting.

Product Features:

- High level of reliability
- Boosts DMX & RDM
- Regenerates DMX & RDM
- Reduces reflection problems
- Distributes DMX & RDM
- Optical isolation on each individual port
- Connection types: 5-pin and 3-pin XLR models, RJ-45 and Pluggable screw terminals models
- Housing types: Installation, box, rack and double rack models
- 5 DMX outputs per universe (10 outputs on the double-rack)
- Built-in line termination



Wireless DMX Splitter XSW Series

The XSW combines CRMX wireless DMX technology with our entire line of DMX splitters. The XSW can operate as a DMX transmitter or as a DMX receiver at the press of a button. The DMX splitter functionality is always available regardless of whether the device is configured as a transmitter or receiver. If only the splitter function is used, the wireless part is switched off. The splitter offers one input port, a thru port and 4 individually optically isolated output ports.

Multiple radio links can be operated at the same time, allowing a setup with multiple DMX Universes. Multiple receivers can be connected to a single transmitter. A variety of wireless configurations can be built up with the same XSW components.

Product Features:

- Wireless DMX transmitter
- Wireless DMX receiver
- DMX splitter
- DMX booster
- Full individual optical isolation per port
- DMX termination



XSH Hybrid Splitter

The XSH Hybrid Splitter allows for distributing power and a DMX signal within one single unit. The XSH features a powerCon 20A input and an XLR input and four pairs of powerCon 20A and XLR outputs. This combination comes especially handy with modern DMX setups, where so called "hybrid cables" with XLR and powerCon connectors are frequently used.

The XSH comes with a built-in amp meter which makes it a breeze to keep track of the amount of power that is consumed, allowing its user to take action before the cables are operated at their limits. With the RDM option it is also possible to remotely monitor the current draw.

Product Features:

- DMX input with built-in termination
- 4 optically isolated DMX outputs
- 1 powerCon 20A input
- 4 powerCon 20A outputs
- Neutrik XLR and powerCon connectors
- With 5-pin XLR or 3-pin XLR connectors available
- Amp meter (0 - 20A)
- High level of reliability
- Boosts and regenerates DMX
- Reduces reflection problems
- RDM (optional)
- 19"-rack mounting kit (optional)

ISP-4 DIN Rail Installation Splitter

The DMX splitters of the ISP-4 line of products boost an incoming DMX signal and provide it on four output ports. This allows for safely going beyond the 32 devices limit of the DMX standard, as well as for building star topologies.

The ISP-4 splitters also act as repeaters, and thus they may be used for transporting a DMX signal across larger distances.

DMX signals often get disturbed by the environment or even by the devices connected to the signal line. An ISP-4 splitter may completely clear the disturbances if it is connected at a location where the signal is still "readable".

Providing four individually optically isolated outputs, as well as an optically isolated input, the ISP-4 splitters may prevent harmful voltages applied to a given port from affecting the other ports and damaging the connected equipment.

The bidirectional ISP-4R variants work within DMX / RDM environments, as well as in pure DMX environments.

Therefore, ISP-4R splitters are a good solution not only for current RDM users, but also for those who expect to use RDM in the future. The ISP-4D variants on the other hand only work with DMX, while they ignore any RDM data.

ISP-4 splitters are DIN rail mountable and powered by an external power supply unit.

Product Features:

- DMX splitter / booster
- DMX repeater
- Input optically isolated
- Each output individually optically isolated
- RDM support (optional)
- Rugged metal housing
- Built-in termination
- RJ-45 and pluggable screw terminal variants



DMX Merger XMG-51

The XMG-51 DMX merger combines up to five DMX lines together into one. This allows multiple DMX lighting control systems are used simultaneously on a single light installation. The DMX data is merged together according to your configuration, allowing the device to be used for a variety of applications:

The 512 channels can be split amongst up to five controllers. For example, controller A controls the channels 1-48, controller B controls the channel 50-74 and the channels 200-400 are controlled by controller C. Several light controllers can operate on the same channels. For example, a single lamp can be accessed by several controllers at the same time. Which controller has priority is configurable (HTP, LTP).

A mobile light controller could be plugged in at different places of the venue. The merger recognizes where the controller is plugged in and switches automatically the corresponding port to the output.

A backup lighting controller can be used at the same time as the main lighting controller by using the XMG-51 merger. The merger will automatically switch to the backup controller in the case of a failure of the main controller.

The XMG-51 has a built-in bypass relay which connects the output to a dedicated input in the event of a power supply failure.

Product Features:

- 5 DMX512 inputs
- 1 DMX512 output
- Only 50us latency
- Bypass relay
- Manual switch
- HTP, LTP channel, LTP line Modes
- Channel offset for each input"



DMX Measurement Tool/Tester XMT-120A

The XMT-120A is the new generation of powerful DMX512 measurement and test equipment for architecture, entertainment, film and TV lighting and installations using DMX512. The versatile functions of the XMT-120A simplify the debugging of lighting and installations, or any application where DMX is used to control lighting.

The unit can monitor DMX512 signals as well as analyze and display them. The device can also generate DMX512 signal and supports the control of more complex DMX512 fixtures such as moving lights. The testing of RGB LED lighting with many channels is easy to do with the XMT-120A. With additional features such as cable tester, timing analysis, sequence editor, channel "tracer", dip-switch display, flicker finder, and Min / Max display this device is ideal for troubleshooting and resolving DMX512 signal challenges and yet remains very simple to operate. The XMT-120A can be connected via USB to a PC. The Windows software allows for managing the fixture library for intelligent devices and uploading firmware updates.

Product Features:

- DMX receiver
- DMX transmitter
- RGB LED control
- Moving light control
- Cable tester
- Channel tracer
- Dip-switch display
- Programmable sequence
- Timing analyzer
- Adjustable DMX frame rate
- PC software
- And more



DMX-Recorder XRC-200

The XRC-200 is an easy to use DMX recording and replay unit. The operating concept is similar to a CD player and can be used by non-professionals.

The sequences are recorded from a lighting console, or other DMX output device, onto the device. The XRC-200 replays the recorded sequences in real time.

With the ability to record 2 DMX universes (1024 DMX channels), the XRC-200 is also suitable for LED and moving light applications/installations. A variety of applications in architecture and entertainment, trade-show, retail and museum lighting are covered with the XRC-200 easily and economically.

The optional XRC-CT15B contact box with 15 inputs for dry contacts allows a customized integration of triggers for control of the XRC-200 in. In addition, the XRC-200 has an internal timer for show and device control. The device can also be set up to be remotely operated or triggered by DMX. During live shows, the XRC-200 can be used as a DMX backup device.

The sequences and settings of the XRC-200 can be stored and managed with the XRC-200 PC software, which is connected via the USB port.

Product Features:

- Record and play back 64 sequences
- 10 configurable play lists
- Configurable fade times
- Optional 15 control inputs
- 2 DMX inputs
- 2 DMX outputs
- Built-in timer
- Backup device
- USB connection for firmware update, and PC software
- PC software for uploading, downloading and storage of shows



RDM Controller / DMX Tester XMT-350

The XMT-350 is a compact and modern RDM controller and DMX tester. RDM-enabled devices can be monitored and controlled with the XMT-350. For example, the DMX addresses can be set remotely. The XMT-350 automatically detects and lists all reachable RDM devices.

The DMX patch mode from the XMT-350 simplifies the installation. The user selects the desired order of the fixtures and the XMT-350 patches the devices automatically.

Status information such as the burning time of the lamp can be read directly on the XMT-350. The user doesn't have to go to the fixture.

The XMT-350 can also monitor DMX signals and display them graphically. It can generate DMX512 signals and supports the control of complex devices like DMX512 moving lights. The testing of RGB LED lighting with a large quantity of channels is easy with the XMT-350. The simple and user-friendly operation and the extra features such as cable testers, timing analysis, sequence editor, channel "tracer", dip-switch display and min / max display makes the XMT-350 ideal for troubleshooting DMX512 installations.

Product Features:

- RDM controller
- Set DMX address remotely
- Set "Personality" mode remotely
- Readout RDM device information
- Automatic DMX patch support over RDM
- DMX receiver
- DMX transmitter
- RGB LED control
- Moving light control
- Cable tester
- Channel "tracer"
- Dip-switch display
- Programmable sequence (Chaser)
- Timing analysis
- Configurable frame rate
- PC software



XWL Series

The XWL series encompasses both, W-DMX as well as CRMX compatible and compact wireless DMX transmitters and receivers.

W-DMX from Wireless Solution and CRMX from LumenRadio are the leading technologies for wireless DMX transmission. With a latency of only about 5 ms, CRMX and W-DMX guarantee a DMX connection with the properties and reliability level equivalent to those of a wired link.

Several transmitters can be operated in parallel, each of which is easily linkable to any number of receivers and capable of handling one full universe of 512 DMX channels.

All XWL products are equipped with M10/M12 and 3/8" threads to provide a variety of installation possibilities, such as mounting on a microphone stand.

Product Features:

- Wireless DMX receiver (XWL-R models)
- Wireless DMX transmitter (XWL-T models)
- Available with W-DMX™ or CRMX™
- M10/M12 threads for truss mount
- 3/8" thread for mounting on a microphone stand
- Built-in power supply (powerCON connected)
- Compact, rugged housing

The XMT-120A is the new generation of powerful DMX512 measurement and test equipment for architecture, entertainment, film and TV lighting and installations using DMX512.



The BODY is made in die cast aluminum to be as light as possible without sacrificing resistance and load capacity. GEAR BOX is manufactured with a thicker aluminum wall, comparing to the rest of the body, to respond to the very stringent mechanical requirements. The CHAIN-BAG BRACKET allows the hoist to be used body up or down. The design ensures the bag is positioned correctly to accept chain without the need for any adjustment, reducing the chance of chain spills. FLUID BATH. The dynamic fluid lubricant used for the gearbox, reduces friction and surface wear. As a direct result, noise level, reliability and durability are less wearing while maintenance is minimized. This special type of dynamic fluid is high pressure resistant and keep its volume and lubrication capabilities up to 180° C temperature. CLIMBING OR STANDARD SUSPENSION WITH SWIVEL HOOK. Hang it any way you want. It will still work as well as saving you time. THE 5 mm GUIDE PLATE is made in steel to prevent breaking the chain guide if the chain jams. Its construction ensures chain loading is tangle-free and trouble-free. THEDC (105VOLTS) BRAKES LOCK OFF, in 0.1 of a second and able to sustain up to 4000 lock/unlock cycles in an hour. This "progressive time lock off" action is less wearing to their inner components than a AC (220 Volts) one. IRON FREE BRAKE SHOES can not oxidizes preventing the disks to stick together while brake disk is made stainless steel rust-free. VERY LOW OPERATIONAL NOISE, with just 67.5 dBA the EXE is about 30% more silent than other leading brands.



D8 250 kg Direct Control

D8 250 kg HOIST SPECIFICATIONS

Model: D8
Working Load Limit (WLL): 250kg/551lbs
Lifting Speed: 4m/min / 13ft/min @50Hz
Motor Power: 0.5 kW
Operating Voltage: ΔY 230/400VAC - 3 @ 50Hz
3 ph Δ 230 VAC - Y 400 VAC Δ 2.70A - Y 1.56A
Type of Control: Direct
Revolution per Minute: 1400
Falls of Chain: 1
Load Wheel: 5 pockets
Protection Class: IP55
FEM Classification: 2m
Duty Factor of Motor: 40%
Starts Per Hour: 240
Connection Cable Length: 1m/3.3ft
Δ Power Supply Connector: (*) CEE 16A 9h 230VAC - 3PH + G blue plug
Y Power Supply Connector: CEE 16A 6h 400VAC - 3PH + G red plug
Control Supply Connector: Not Provided
Noise Level: 67.5 db @ full load
DC Brake System: 2
DC Brake Size: 06
DC Brake Power: 20W
DC Brake Operating Voltage: 105VDC
DC Brake Rated Torque: 4N·m/2.95ft·lbs
DC Brake Rated Torque Reduction: 87% (1500 r/min) at the speed specification x %
Clutch Characteristics: Clutch is friction based force-limiter.
Clutch outside the line of kinetic movement.
Limit Switch Not Provided
Selfweight ≈ 19.0kg /42lbs

Chain Specifications:

Size: 6x18mm / 0.24x0.71inch
Safety Factor: 8:1
Selfweight :0.78kg/m /0.52lbs/ft
Material: Zinc Galvanized Steel grade 80 (DIN EN 818-7)



D8 500 kg Direct Control

D8 500 kg HOIST SPECIFICATIONS

Model: D8
Working Load Limit (WLL): 500kg/1102lbs
Lifting Speed: 4m/min / 13ft/min @50Hz
Motor Power: 0.8kW
Operating Voltage: ΔY 230/400VAC - 3 - 50Hz
3 ph Δ 230VAC - Y 400VAC Δ 3.93 A - Y 2.27 A
Type of Control: Direct Control
Revolution Per Minute: 1400
Falls of Chain: 1
Load Wheel: 5 pockets
Protection Class: IP55
FEM Classification: 2m
Duty Factor of Motor: 40%
Starts Per Hour: 240
Connection Cable Length: 1m / 3.3ft
Δ Power Supply Connector: (*) CEE 16A 9h 230VAC - 3PH + G blue plug
Y Power Supply Connector: CEE 16A 6h 400VAC - 3PH + G red plug
Control Supply Connector: Not Provided
Noise Level: 67.5 db @ full load
DC Brake System: 2
DC Brake Size: 08
DC Brake Power: 25W
DC Brake Operating Voltage: 105VDC
DC Brake Rated Torque: 8N·m / 5.90 ft·lbs
DC Brake Rated Torque Reduction: 85% (1500 r/min) at the speed specification x %
Clutch Characteristics: Clutch is friction based force-limiter.
Clutch outside the line of kinetic movement.
Limit Switch Not Provided
Selfweight ≈ 36.0kg / 79lbs

Chain Specifications:

Size: 8x24mm / 0.31x0.94inch
Safety Factor: 8:1
Selfweight: 1.39kg/m / 0.93lbs/ft
Material: Zinc Galvanized Steel grade 80 (DIN EN 818-7)



D8 1000 kg Direct Control

D8 1000 kg HOIST SPECIFICATIONS

Model: D8
Working Load Limit (WLL): 1000kg/2205lbs
Lifting Speed: 4m/min / 13ft/min @50Hz
Motor Power: 1.0kW
Operating Voltage: ΔY 230/400VAC - 3 - 50Hz
3 ph Δ 230VAC - Y 400VAC Δ 4.62 A - Y 2.67 A
Type of Control: Direct Control
Revolution Per Minute: 1400
Falls of Chain: 1
Load Wheel: 5 pockets
Protection Class: IP55
FEM Classification: 2m
Duty Factor of Motor: 40%
Starts Per Hour: 240
Connection Cable Length: 1m / 3.3ft
Δ Power Supply Connector: (*) CEE 16A 9h 230VAC - 3PH + G blue plug
Y Power Supply Connector: CEE 16A 6h 400VAC - 3PH + G red plug
Control Supply Connector: Not Provided
Noise Level: 67.5 db @ full load
DC Brake System: 2
DC Brake Size: 08
DC Brake Power: 25W
DC Brake Operating Voltage: 105VDC
DC Brake Rated Torque: 8N·m / 5.90ft·lbs
DC Brake Rated Torque Reduction: 85% (1500 r/min) at the speed specification x %
Clutch Characteristics: Clutch is friction based force-limiter.
Clutch outside the line of kinetic movement.
Limit Switch Not Provided
Selfweight ≈ 45.0kg / 99lbs

Chain Specifications:

Size: 8x24mm / 0.31x0.94inch
Safety Factor: 8:1
Selfweight: 1.39kg/m / 0.93lbs/ft
Material: Zinc Galvanized Steel grade 80 (DIN EN 818-7)



D8 2000kg Direct Control

D8 2000 kg HOIST SPECIFICATIONS

Model: D8
Working Load Limit (WLL): 2000kg/4409lbs
Lifting Speed: 4m/min / 13ft/min @50Hz
Motor Power: 1.6kW
Operating Voltage: ΔY 230/400VAC - 3 - 50Hz
3 ph Δ 230VAC - Y 400VAC Δ 8.37 A - Y 4.83 A
Type of Control: Direct Control
Revolution Per Minute: 1400
Falls of Chain: 2
Load Wheel: 5 pockets
Protection Class: IP55
FEM Classification: 2m
Duty Factor of Motor: 40%
Starts Per Hour: 240
Connection Cable Length: 1m / 3.3ft
Δ Power Supply Connector: (*) CEE 16A 9h 230VAC - 3PH + G blue plug
Y Power Supply Connector: CEE 16A 6h 400VAC - 3PH + G red plug
Control Supply Connector: Not Provided
Noise Level: 67.5 db @ full load
DC Brake System: 2
DC Brake Size: 10
DC Brake Power: 30W
DC Brake Operating Voltage: 105VDC
DC Brake Rated Torque: 16N·m / 11.80ft·lbs
DC Brake Rated Torque Reduction: 83% (1500 r/min) at the speed specification x %
Clutch Characteristics: Clutch is friction based force-limiter.
Clutch outside the line of kinetic movement.
Limit Switch Not Provided
Selfweight ≈ 47.0kg /104lbs

Chain Specifications:

Size: 8x24mm / 0.31x0.94inch
Safety Factor: 8:1
Selfweight: 1.39kg/m / 0.93lbs/ft
Material: Zinc Galvanized Steel grade 80 (DIN EN 818-7)



D8 250 kg Low Voltage

D8 250 kg HOIST SPECIFICATIONS

Model: D8
Working Load Limit (WLL): 250kg/551lbs
Lifting Speed: 4m/min / 13ft/min @50Hz
Motor Power: 0.5kW
Operating Voltage: ΔY 230/400VAC - 3 - 50Hz
3 ph Δ 230VAC - Y 400VAC Δ 2.70A - Y 1.56A
Type of Control: Low Voltage Control
Revolution Per Minute: 1400
Falls of Chain: 1
Load Wheel: 5 pockets
Protection Class: IP55
FEM Classification: 2m
Duty Factor of Motor: 40%
Starts Per Hour: 240
Connection Cable Length: 1m / 3.3ft
Δ Power Supply Connector: (*) CEE 16A 9h 230VAC - 3PH + G blue plug
Y Power Supply Connector: CEE 16A 6h 400VAC - 3PH + G red plug
Control Supply Connector: CEE 16A 4h 24VAC - 3PH + G yellow socket
Noise Level: 67.5 db @ full load
DC Brake System: 2
DC Brake Size: 06
DC Brake Power: 20W
DC Brake Operating Voltage: 105VDC
DC Brake Rated Torque: 4N·m / 2.95ft·lbs
DC Brake Rated Torque Reduction: 87% (1500 r/min) at the speed specification x %
Clutch Characteristics: Clutch is friction based force-limiter.
Clutch outside the line of kinetic movement.
Limit Switch Not Provided
Selfweight ≈ 19.0kg /42lbs

Chain Specifications:

Size: 4x12mm / 0.16x0.47inch
Safety Factor: 8:1
Selfweight :0.35kg/m / 0.23lbs/ft
Material: Zinc Galvanized Steel grade 80 (DIN EN 818-7)



D8 500 kg Low Voltage

D8 500 kg HOIST SPECIFICATIONS

Model: D8
Working Load Limit (WLL): 500kg/1102lbs
Lifting Speed: 4m/min / 13ft/min @50Hz
Motor Power: 0.8kW
Operating Voltage: ΔY 230/400VAC - 3 - 50Hz
3 ph Δ 230VAC - Y 400VAC Δ 3.93 A - Y 2.27 A
Type of Control: Low Voltage Control
Revolution Per Minute: 1400
Falls of Chain: 1
Load Wheel: 5 pockets
Protection Class: IP55
FEM Classification: 2m
Duty Factor of Motor: 40%
Starts Per Hour: 240
Connection Cable Length: 1m / 3.3ft
Δ Power Supply Connector: (*) CEE 16A 9h 230VAC - 3PH + G blue plug
Y Power Supply Connector: CEE 16A 6h 400VAC - 3PH + G red plug
Control Supply Connector: CEE 16A 4h 24VAC - 3PH + G yellow socket
Noise Level: 67.5 db @ full load
DC Brake System: 2
DC Brake Size: 08
DC Brake Power: 25W
DC Brake Operating Voltage: 105VDC
DC Brake Rated Torque: 8N·m / 5.90ft·lbs
DC Brake Rated Torque Reduction: 85% (1500 r/min) at the speed specification x %
Clutch Characteristics: Clutch is friction based force-limiter.
Clutch outside the line of kinetic movement.
Limit Switch 4 position
Selfweight ≈ 36.0kg / 79lbs

Chain Specifications:

Size: 6x18mm / 0.24x0.71inch
Safety Factor: 8:1
Selfweight: 0.78kg/m / 0.52lbs/ft
Material: Zinc Galvanized Steel grade 80 (DIN EN 818-7)



D8 1000 kg Low Voltage

D8 1000 kg HOIST SPECIFICATIONS

Model: D8
Working Load Limit (WLL): 1000kg/2205lbs
Lifting Speed: 4m/min / 13ft/min @50Hz
Motor Power: 1.0kW
Operating Voltage: ΔY 230/400VAC - 3 - 50Hz
3 ph Δ 230VAC - Y 400VAC Δ 4.62 A - Y 2.67 A
Type of Control: Low Voltage Control
Revolution Per Minute: 1400
Falls of Chain: 1
Load Wheel: 5 pockets
Protection Class: IP55
FEM Classification: 2m
Duty Factor of Motor: 40%
Starts Per Hour: 240
Connection Cable Length: 1m / 3.3ft
Δ Power Supply Connector: (*) CEE 16A 9h 230VAC - 3PH + G blue plug
Y Power Supply Connector: CEE 16A 6h 400VAC - 3PH + G red plug
Control Supply Connector: CEE 16A 4h 24VAC - 3PH + G yellow socket
Noise Level: 67.5 db @ full load
DC Brake System: 2
DC Brake Size: 08
DC Brake Power: 25W
DC Brake Operating Voltage: 105VDC
DC Brake Rated Torque: 8N·m / 5.90 ft·lbs
DC Brake Rated Torque Reduction: 85% (1500 r/min) at the speed specification x %
Clutch Characteristics: Clutch is friction based force-limiter.
Clutch outside the line of kinetic movement.
Limit Switch 4 position
Selfweight ≈ 45.0kg / 99lbs

Chain Specifications:

Size: 8x24mm / 0.31x0.94inch
Safety Factor: 8:1
Selfweight: 1.39kg/m / 0.93lbs/ft
Material: Zinc Galvanized Steel grade 80 (DIN EN 818-7)



D8 2000kg Low Voltage

D8 2000 kg HOIST SPECIFICATIONS

Model: D8
Working Load Limit (WLL): 2000kg/4409lb
Lifting Speed: 4m/min / 13ft/min @50Hz
Motor Power: 1.6kW
Operating Voltage: ΔY 230/400VAC - 3 - 50Hz
3 ph Δ 230VAC - Y 400VAC Δ 8.37 A - Y 4.83 A
Type of Control: Low Voltage Control
Revolution Per Minute: 1400
Falls of Chain: 2
Load Wheel: 5 pockets
Protection Class: IP55
FEM Classification: 2m
Duty Factor of Motor: 40%
Starts Per Hour: 240
Connection Cable Length: 1m / 3.3ft
Δ Power Supply Connector: (*) CEE 16A 9h 230VAC - 3PH + G blue plug
Y Power Supply Connector: CEE 16A 6h 400VAC - 3PH + G red plug
Control Supply Connector: CEE 16A 4h 24VAC - 3PH + G yellow socket
Noise Level: 67.5 db @ full load
DC Brake System: 2
DC Brake Size: 10
DC Brake Power: 30W
DC Brake Operating Voltage: 105VDC
DC Brake Rated Torque: 16N·m / 11.80ft·lbs
DC Brake Rated Torque Reduction: 83% (1500 r/min) at the speed specification x %
Clutch Characteristics: Clutch is friction based force-limiter.
Clutch outside the line of kinetic movement.
Limit Switch 4 position
Selfweight ≈ 47.0kg / 104lbs

Chain Specifications:

Size: 8x24mm / 0.31x0.94inch
Safety Factor: 8:1
Selfweight: 1.39kg/m / 0.93lbs/ft
Material: Zinc Galvanized Steel grade 80 (DIN EN 818-7)



D8+ 150 kg Direct Control

D8+ 150 kg HOIST SPECIFICATIONS

Model: D8+
 Working Load Limit (WLL): 150kg/331lbs
 Lifting Speed: 4m/min / 13ft/min @50Hz
 Motor Power: 0.8kW
 Operating Voltage: Δ/Y 230/400VAC - 3 - 50Hz
 3 ph Δ 230VAC - Y 400VAC Δ 2.70 A - Y 1.56 A
 Type of Control: Direct Control
 Revolution Per Minute: 1400
 Falls of Chain: 1
 Load Wheel: 5 pockets
 Protection Class: IP55
 FEM Classification: 2m
 Duty Factor of Motor: 40%
 Starts Per Hour: 240
 Connection Cable Length: 1m / 3.3ft
 Δ Power Supply Connector: (*) CEE 16A 9h 230VAC - 3PH + G blue plug
 Y Power Supply Connector: CEE 16A 6h 400VAC - 3PH + G red plug
 Control Supply Connector: Not Provided
 Noise Level: 67.5 db @ full load
 DC Brake System: 2
 DC Brake Size: 06
 DC Brake Power: 20W
 DC Brake Operating Voltage: 105VDC
 DC Brake Rated Torque: 4N·m / 2.95ft·lbs
 DC Brake Rated Torque Reduction: 87% (1500 r/min) at the speed specification x %
 Clutch Characteristics: Clutch is friction based force-limiter.
 Clutch outside the line of kinetic movement.
 Limit Switch Not Provided
 Selfweight = 19.0kg / 42lbs

Chain Specifications:

Size: 4x12mm / 0.16x0.47inch
 Safety Factor: 10:1
 Selfweight: 0.35kg/m / 0.23lbs/ft
 Material: Zinc Galvanized Steel grade 80 (DIN EN 818-7)



D8+ 300 kg Direct Control

D8+ 300 kg HOIST SPECIFICATIONS

Model: D8+
 Working Load Limit (WLL): 300kg/661lbs
 Lifting Speed: 4m/min / 13ft/min @50Hz
 Motor Power: 0.8kW
 Operating Voltage: Δ/Y 230/400VAC - 3 - 50Hz
 3 ph Δ 230VAC - Y 400VAC Δ 3.29 A - Y 1.90 A
 Type of Control: Direct Control
 Revolution Per Minute: 1400
 Falls of Chain: 1
 Load Wheel: 5 pockets
 Protection Class: IP55
 FEM Classification: 2m
 Duty Factor of Motor: 40%
 Starts Per Hour: 240
 Connection Cable Length: 1m
 Δ Power Supply Connector: (*) CEE 16A 9h 230VAC - 3PH + G blue plug
 Y Power Supply Connector: CEE 16A 6h 400VAC - 3PH + G red plug
 Control Supply Connector: Not Provided
 Noise Level: 67.5 db @ full load
 DC Brake System: 2
 DC Brake Size: 08
 DC Brake Power: 25W
 DC Brake Operating Voltage: 105VDC
 DC Brake Rated Torque: 8N·m / 5.90ft·lbs
 DC Brake Rated Torque Reduction: 85% (1500 r/min) at the speed specification x %
 Clutch Characteristics: Clutch is friction based force-limiter.
 Clutch outside the line of kinetic movement.
 Limit Switch Not Provided
 Selfweight = 36.0kg / 79lbs

Chain Specifications:

Size: 6x18mm / 0.24x0.71inch
 Safety Factor: 10:1
 Selfweight: 0.78kg/m / 0.52lbs/ft
 Material: Zinc Galvanized Steel grade 80 (DIN EN 818-7)



D8+ 600 kg Direct Control

D8+ 600 kg HOIST SPECIFICATIONS

Model: D8+
 Working Load Limit (WLL): 600kg/1323lbs
 Lifting Speed: 4m/min / 13ft/min @50Hz
 Motor Power: 1.0kW
 Operating Voltage: Δ/Y 230/400VAC - 3 - 50Hz
 3 ph Δ 230VAC - Y 400VAC Δ 3.59 A - Y 2.07 A
 Type of Control: Direct Control
 Revolution Per Minute: 1400
 Falls of Chain: 1
 Load Wheel: 5 pockets
 Protection Class: IP55
 FEM Classification: 2m
 Duty Factor of Motor: 40%
 Starts Per Hour: 240
 Connection Cable Length: 1m / 3.3ft
 Δ Power Supply Connector: (*) CEE 16A 9h 230VAC - 3PH + G blue plug
 Y Power Supply Connector: CEE 16A 6h 400VAC - 3PH + G red plug
 Control Supply Connector: Not Provided
 Noise Level: 67.5 db @ full load
 DC Brake System: 2
 DC Brake Size: 08
 DC Brake Power: 25W
 DC Brake Operating Voltage: 105VDC
 DC Brake Rated Torque: 8N·m / 5.90ft·lbs
 DC Brake Rated Torque Reduction: 85% (1500 r/min) at the speed specification x %
 Clutch Characteristics: Clutch is friction based force-limiter.
 Clutch outside the line of kinetic movement.
 Limit Switch Not Provided
 Selfweight = 45.0kg / 99lbs

Chain Specifications:

Size: 8x24mm / 0.31x0.94inch
 Safety Factor: 10:1
 Selfweight: 1.39kg/m / 0.93lbs/ft
 Material: Zinc Galvanized Steel grade 80 (DIN EN 818-7)



D8+ 1200kg Direct Control

D8+ 1200 kg HOIST SPECIFICATIONS

Model: D8+
 Working Load Limit (WLL): 1200kg/2646lbs
 Lifting Speed: 4m/min / 13ft/min @50Hz
 Motor Power: 1.6kW
 Operating Voltage: Δ/Y 230/400VAC - 3 - 50Hz
 3 ph Δ 230VAC - Y 400VAC Δ 4.59 A - Y 2.65 A
 Type of Control: Direct Control
 Revolution Per Minute: 1400
 Falls of Chain: 2
 Load Wheel: 5 pockets
 Protection Class: IP55
 FEM Classification: 2m
 Duty Factor of Motor: 40%
 Starts Per Hour: 240
 Connection Cable Length: 1m / 3.3ft
 Δ Power Supply Connector: (*) CEE 16A 9h 230VAC - 3PH + G blue plug
 Y Power Supply Connector: CEE 16A 6h 400VAC - 3PH + G red plug
 Control Supply Connector: Not Provided
 Noise Level: 67.5 db @ full load
 DC Brake System: 2
 DC Brake Size: 10
 DC Brake Power: 30W
 DC Brake Operating Voltage: 105VDC
 DC Brake Rated Torque: 16N·m / 11.80ft·lbs
 DC Brake Rated Torque Reduction: 83% (1500 r/min) at the speed specification x %
 Clutch Characteristics: Clutch is friction based force-limiter.
 Clutch outside the line of kinetic movement.
 Limit Switch Not Provided
 Selfweight = 47.0kg / 104lbs

Chain Specifications:

Size: 8x24mm / 0.31x0.94inch
 Safety Factor: 10:1
 Selfweight: 1.39kg/m / 0.93lbs/ft
 Material: Zinc Galvanized Steel grade 80 (DIN EN 818-7)



D8+ 150 kg Low Voltage

D8+ 150 kg HOIST SPECIFICATIONS

Model: D8+
 Working Load Limit (WLL): 150kg/331lbs
 Lifting Speed: 4m/min / 13ft/min @50Hz
 Motor Power: 0.8kW
 Operating Voltage: Δ/Y 230/400VAC - 3 - 50Hz
 3 ph Δ 230VAC - Y 400VAC Δ 2.70 A - Y 1.56 A
 Type of Control: Low Voltage Control
 Revolution Per Minute: 1400
 Falls of Chain: 1
 Load Wheel: 5 pockets
 Protection Class: IP55
 FEM Classification: 2m
 Duty Factor of Motor: 40%
 Starts Per Hour: 240
 Connection Cable Length: 1m / 3.3ft
 Δ Power Supply Connector: (*) CEE 16A 9h 230VAC - 3PH + G blue plug
 Y Power Supply Connector: CEE 16A 6h 400VAC - 3PH + G red plug
 Control Supply Connector: CEE 16A 4h 24VAC - 3PH + G yellow socket
 Noise Level: 67.5 db @ full load
 DC Brake System: 2
 DC Brake Size: 06
 DC Brake Power: 20W
 DC Brake Operating Voltage: 105VDC
 DC Brake Rated Torque: 4N·m / 2.95ft·lbs
 DC Brake Rated Torque Reduction: 87% (1500 r/min) at the speed specification x %
 Clutch Characteristics: Clutch is friction based force-limiter.
 Clutch outside the line of kinetic movement.
 Limit Switch Not Provided
 Selfweight = 19.0kg / 42lbs

Chain Specifications:

Size: 4x12mm / 0.16x0.47inch
 Safety Factor: 10:1
 Selfweight: 0.35kg/m / 0.23lbs/ft
 Material: Zinc Galvanized Steel grade 80 (DIN EN 818-7)



D8+ 300 kg Low Voltage

D8+ 300 kg HOIST SPECIFICATIONS

Model: D8+
 Working Load Limit (WLL): 300kg/661lbs
 Lifting Speed: 4m/min / 13ft/min @50Hz
 Motor Power: 0.8kW
 Operating Voltage: Δ/Y 230/400VAC - 3 - 50Hz
 3 ph Δ 230VAC - Y 400VAC Δ 3.29 A - Y 1.90 A
 Type of Control: Low Voltage Control
 Revolution Per Minute: 1400
 Falls of Chain: 1
 Load Wheel: 5 pockets
 Protection Class: IP55
 FEM Classification: 2m
 Duty Factor of Motor: 40%
 Starts Per Hour: 240
 Connection Cable Length: 1m / 3.3ft
 Δ Power Supply Connector: (*) CEE 16A 9h 230VAC - 3PH + G blue plug
 Y Power Supply Connector: CEE 16A 6h 400VAC - 3PH + G red plug
 Control Supply Connector: CEE 16A 4h 24VAC - 3PH + G yellow socket
 Noise Level: 67.5 db @ full load
 DC Brake System: 2
 DC Brake Size: 08
 DC Brake Power: 25W
 DC Brake Operating Voltage: 105VDC
 DC Brake Rated Torque: 8N·m / 5.90ft·lbs
 DC Brake Rated Torque Reduction: 85% (1500 r/min) at the speed specification x %
 Clutch Characteristics: Clutch is friction based force-limiter.
 Clutch outside the line of kinetic movement.
 Limit Switch 4 position
 Selfweight = 36.0kg / 79lbs

Chain Specifications:

Size: 6x18mm / 0.24x0.71inch
 Safety Factor: 10:1
 Selfweight: 0.78kg/m / 0.52lbs/ft
 Material: Zinc Galvanized Steel grade 80 (DIN EN 818-7)



D8+ 600 kg Low Voltage

D8+ 600 kg HOIST SPECIFICATIONS

Model: D8+
 Working Load Limit (WLL): 600kg/1323lbs
 Lifting Speed: 4m/min / 13ft/min @50Hz
 Motor Power: 1.0kW
 Operating Voltage: Δ/Y 230/400VAC - 3 - 50Hz
 3 ph Δ 230VAC - Y 400VAC Δ 3.59 A - Y 2.07 A
 Type of Control: Low Voltage Control
 Revolution Per Minute: 1400
 Falls of Chain: 1
 Load Wheel: 5 pockets
 Protection Class: IP55
 FEM Classification: 2m
 Duty Factor of Motor: 40%
 Starts Per Hour: 240
 Connection Cable Length: 1m / 3.3ft
 Δ Power Supply Connector: (*) CEE 16A 9h 230VAC - 3PH + G blue plug
 Y Power Supply Connector: CEE 16A 6h 400VAC - 3PH + G red plug
 Control Supply Connector: CEE 16A 4h 24VAC - 3PH + G yellow socket
 Noise Level: 67.5 db @ full load
 DC Brake System: 2
 DC Brake Size: 08
 DC Brake Power: 25W
 DC Brake Operating Voltage: 105VDC
 DC Brake Rated Torque: 8N·m / 5.90ft·lbs
 DC Brake Rated Torque Reduction: 85% (1500 r/min) at the speed specification x %
 Clutch Characteristics: Clutch is friction based force-limiter.
 Clutch outside the line of kinetic movement.
 Limit Switch 4 position
 Selfweight = 45.0kg / 99lbs

Chain Specifications:

Size: 8x24mm / 0.31x0.94inch
 Safety Factor: 10:1
 Selfweight: 1.39kg/m / 0.93lbs/ft
 Material: Zinc Galvanized Steel grade 80 (DIN EN 818-7)



D8+ 1200 kg Low Voltage

D8+ 1200 kg HOIST SPECIFICATIONS

Model: D8+
 Working Load Limit (WLL): 1200kg/2646lbs
 Lifting Speed: 4m/min / 13ft/min @50Hz
 Motor Power: 1.6kW
 Operating Voltage: Δ/Y 230/400VAC - 3 - 50Hz
 3 ph Δ 230VAC - Y 400VAC Δ 4.59 A - Y 2.65 A
 Type of Control: Low Voltage Control
 Revolution Per Minute: 1400
 Falls of Chain: 2
 Load Wheel: 5 pockets
 Protection Class: IP55
 FEM Classification: 2m
 Duty Factor of Motor: 40%
 Starts Per Hour: 240
 Connection Cable Length: 1m / 3.3ft
 Δ Power Supply Connector: (*) CEE 16A 9h 230VAC - 3PH + G blue plug
 Y Power Supply Connector: CEE 16A 6h 400VAC - 3PH + G red plug
 Control Supply Connector: CEE 16A 4h 24VAC - 3PH + G yellow socket
 Noise Level: 67.5 db @ full load
 DC Brake System: 2
 DC Brake Size: 10
 DC Brake Power: 30W
 DC Brake Operating Voltage: 105VDC
 DC Brake Rated Torque: 16N·m / 11.80ft·lbs
 DC Brake Rated Torque Reduction: 83% (1500 r/min) at the speed specification x %
 Clutch Characteristics: Clutch is friction based force-limiter.
 Clutch outside the line of kinetic movement.
 Limit Switch 4 position
 Selfweight = 47.0kg / 104lbs

Chain Specifications:

Size: 8x24mm / 0.31x0.94inch
 Safety Factor: 10:1
 Selfweight: 1.39kg/m / 0.93lbs/ft
 Material: Zinc Galvanized Steel grade 80 (DIN EN 818-7)



The EXE RISE LOAD CELL INTERFACE system works as standalone load cell reader, fully integrated in a chain hoist body to give riggers the possibility to see, in real time, the individual weight applied to the chain hoist during all rigging operations. It is built around a self-powered electronic circuit board equipped with an LED display, built into a metal cover that can replace the standard end cover of the hoist. The circuit board is connected to a special body hook with integrated load cell reading system. The electronics are designed to withstand shock loading typical with the environment the products are used in, and can handle working temperatures from -10 to +60 ° C with points of humidity up to 90%.

LOAD CELL INTERFACE KIT PRO
Cell Booster

Powers up to 16 EXE-Cell Pro Interface modules via two 7 Pin XLR output lines. Rack mountable – 2U. Front panel includes Data and Power on LED indicator lights. 1 x Emergency Stop mushroom button. Power inlet and Auxiliary out via Powercon connectors on rear (16amp Max). Auto Sensing Voltage Selector. Can be connected to EXE-Drive controllers and linked to activate E-stop network in case of Over/Under load. Multiple Boosters and EXE-Drive units can be linked together. Max 64 channels on one network 2 x Powercon relay outputs on rear. These can be used to trigger flashing beacons or audible sounders as an additional warning in case of Over/Under-load.



LOAD CELL INTERFACE KIT PRO
Cell Hook

Load cell fully integrated into the hook plate assembly. Solid and robust – Built to withstand the rigours of touring. Easy to upgrade from a standard hook. Simply fixed in place using two bolts. Cable from load cell to display is routed inside the hoist for additional durability. One size Load Cell Hook is suitable for use on multiple different hoist capacities. 1000 and 2000kg D8, or 600 and 1200kg D8+. No loss of headroom compared with external load cell systems.



LOAD CELL INTERFACE KIT PRO
Cell Display

Calibration of load-cell via link connectors for easy setup without dismantling the hoist. Two panel display, one to show 4-DIGIT weight (132 x 47 mm) and a second 2-DIGIT display (45 x 39 mm) has the possibility to select between pounds or kilograms. Both displays are mounted behind a durable polycarbonate protection screen. Dual Color Multifunction display to show system calibration set up and real time weight loading, with adjustable brightness and auto power off functions. Automatic display reverse option to provide easy to read, clear display in either body up or body down operation. Backup power supply via battery. (Running time dependent on brightness and auto power off functions setup).

Optional available a Li-Ion battery to mount inside the CELL DISPLAY that is able to power the load cell without using any external power supply via link cable connector, for more details please read the instruction manual. Push Buttons are IP55. "Zero" value setting (Tare) function, shows the weight of the suspended load only and not the self-weight of the hoist. Double load /sleeve block/ reading setting. Setting over and under-load..



LITEC is pleased to present its brand new range of controllers. The range features 4 and 8 Channel Base controllers in 3U and 5U rack mountable chassis, 4 and 8 Channel Digital Link controllers, both in 5U rack mountable chassis and their complementary accessories. They are furnished with a power inlet connector which includes a mechanical phase inverter to allow easy correction of cross phased power supplies. The DL4 and DL8 models are also furnished with phase present indicator lights. EXE-Drive controllers are compatible with EXE Rise chain hoists, and also with most chain hoists present on the market from 0.19 kW to 1.6 kW. They conform to:
- Machinery Directive 2006/42/EC
- Low Voltage Directive 2006/95/EC
and are in accordance with the harmonized standards EN 60065, EN 60950, EN 60204-1, EN 13850, EN12100-2.

XDRHG Remote Emergency button, Stop/Go

Key Features:

- Yellow double-isolated pendant push button in self-extinguishing thermoplastic material, applied only to XRL
- 5-pole OUT Link panel plug provided with the DL controllers
- 1 x Red Stop mushroom button
- 1 x White flashing LED to enable Go function from remote control
- 1 x Green Go button
- Cable length: 15m
- 1 x XLR 5-pole socket connector



XDRHGR Remote Emergency button, Stop/Go Reverse

Key Features:

- Yellow double-isolated pendant push button in self-extinguishing thermoplastic material, applied only to XRL
- 5-pole OUT Link panel plug provided with the DL controllers
- 1 x Red Stop mushroom button
- 1 x White flashing LED to enable Go function from remote control
- 1 x Green Go button
- 1 x White button for Reverse function
- Cable length: 15m
- 1 x XLR 5-pole socket connector



The brand name EXE identifies a range of products designed for the entertainment & exhibition markets, offering a range of equipment engineered to safely manoeuvre stage equipment, scenery, video walls & other related structures... before, during and after your performance.



XDRH4C Digital Remote control
4 Channels

Key Features:

Material: Sturdy 2mm thick aluminum box, grey powder coated
pendant push button
Dimensions: 24x12x12 cm
9.4x4.7x4.7 inch
Weight: 1 kg / 2.2 lbs
1 x Stop mushroom button
White GO button with light indication
4 x Direction switch with light indication
4 Bi-color Green/White LED lights indicating channel UP / DOWN preselection
Bi-color Green/Orange LED
XLR5 pin male on body for cable connection, cable to be ordered separately

XDSP2-LV Spider Socapex to CEE

Key Features:

This adapter is required to split the Socapex 19 male pin Multi-pin outlets out to 16A CEE connectors to enable connection to chain hoists.
Socapex 19 Pin circular multi-pin male connector
4 x 100cm long legs wired on 4G 1.5m/sq HO7 RNF cable
CEE 16A 6h 400VAC - 3PH + G red socket
CEE 16A 6h 24VAC - 3PH + G yellow plug

XDDB4 4-Channel basic controller

Key Features:

3 Red Neon Light for Power Supply indication
MCB 16A & GFI Breaker (30mA)
Emergency Stop button
White GO button
4 x 3-travel direction selectors (UP-OFF-DOWN)

Technical Specifications:

Power Supply: 1 plug CEE
230/400VAC 32A 6H
3P+N+E w/mechanical phase inverter
Outputs: 1 x CEE 400VAC 16A
6H 3P+T IP67 flying plug
Dimensions: 3U rack box 260mm depth
Weight: 12 kg / 26.5 lbs

XDDB4-LV 4-Channel basic controller

Key Features:

3 Red Neon Light for Power Supply indication
MCB 16A & GFI Breaker (30mA)
Emergency Stop button
White GO button
4 x 3-travel direction selectors (UP-OFF-DOWN)
Protection General Contactor

Technical Specification:

Power Supply: 230/400VAC 32A 6H
3P+N+E w/mechanical phase inverter
Outputs: 2 x 19 pin circular multi-pin female connector.
Two channel power and 2 channel control per connector
Dimensions: 3U rack box 260mm depth
Weight: 12 kg / 26.5 lbs



XDDB8 8-Channel basic controller

Key Features:

3 Red Neon Light for Power Supply indication
MCB 16A & GFI Breaker (30mA)
Emergency Stop button
White GO button
8 x 3-travel direction selectors (UP-OFF-DOWN)
Protection General Contactor

Technical Specification:

Power Supply: 1 plug CEE
230/400VAC 16A
6H 3 P+N+E with mechanical phase inverter
Outputs: 8 x CEE 400VAC 16A
6H 3 P+E panel sockets
Dimensions: 5U rack box 260mm depth
Weight: 17 kg / 26.5 lbs



XDDL4 4-Channel multi-link

Key Features:

- 3 Bi-color Led Light Green/Red for Phase Rotation indication 123 – 321
- GFI 40A (30mA)
- 4 MCB 10A w/link functions between MCB and General Contactor for magneto-thermal Cut off
- 4 x direction contactor reversal
- Emergency Stop button
- White GO button with light indication
- 4 x 3-position travel direction switches (UP-OFF-DOWN)
- 4 x green LED lights indicating channel UP preselection
- 4 x white LED lights indicating channel DOWN preselection
- XLR 5-pole OUT Link panel socket
- XLR 5-pole IN Link + REMOTE panel socket
- 2x XLR 4-pole for load cell / limit switch / E-stop
- The unit is supplied with a 1 meter link cable XLR 5-pole male/female

Technical Specifications:

- Power Supply: 1 plug CEE
- 230/400VAC 32A
- 6H 3 P+N+E with mechanical phase inverter
- Outputs: 4 x CEE 400VAC 16A
- 6H 3 P+E panel sockets
- Dimensions: 5U rack box 300mm depth
- Weight: 21 kg / 46.3 lbs



XDDB4-LVC 4-Channel multi-link controller

Key Features:

- 3 Bi-color Led Light Green/Red for Phase Rotation indication 123 – 321
- GFI 40A (30mA)
- 4 MCB 10A w/link functions between MCB and General Contactor for magneto-thermal Cut off
- 4 x direction contactor reversal
- Emergency Stop mushroom button
- White GO button with light indication
- 4 x 3-position travel direction switches (UP-OFF-DOWN)
- 4 x green LED lights indicating channel UP preselection
- 4 x white LED lights indicating channel DOWN preselection
- XLR 5-pole OUT Link panel socket
- XLR 5-pole IN Link + REMOTE panel socket
- 2x XLR 4-pole for load cell / limit switch / E-stop
- The unit is supplied with a 1 meter link cable XLR 5-pole male/female

Technical Specifications:

- Power Supply: 1 plug CEE 230/400VAC 32A
- 6H 3 P+N+E with mechanical phase inverter
- Outputs: 2 x 19 pin circular multi-pin female connector.
- Two channel power and 2 channel control per connector
- Dimensions: 5U rack box 300mm depth
- Weight: 21 kg / 46.3 lbs



XDDL8 8-Channel multi-link controller

Key Features:

- 3 Bi-color Led Light Green/Red for Phase Rotation indication 123 – 321
- GFI 40A (30mA)
- 4 MCB 10A w/link functions between MCB and General Contactor for magneto-thermal Cut off
- 8 x direction contactor reversal
- Emergency Stop mushroom button
- White GO button with light indication
- 8 x 3-position travel direction switches (UP-OFF-DOWN)
- 8 x green LED lights indicating channel UP preselection
- 8 x white LED lights indicating channel DOWN preselection
- XLR 5-pole OUT Link panel socket
- XLR 5-pole IN Link + REMOTE panel socket
- 2x XLR 4-pole for load cell / limit switch / E-stop
- The unit is supplied with a 1 meter link cable XLR 5-pole male/female

Technical Specifications:

- Power Supply: 1 plug CEE
- 230/400VAC 32A
- 6H 3 P+N+E with mechanical phase inverter
- Outputs: 8 x CEE 400VAC 16A
- 6H 3 P+T panel sockets
- Dimensions: 5U rack box 300mm depth
- Weight: 25 kg / 55.1 lbs

XDDB8-LV Digital remote control 4 channels

Key Features:

- 3 Bi-color Led Light Green/Red for Phase Rotation indication 123 – 321
- GFI 40A (30mA)
- 4 MCB 10A w/link functions between MCB and General Contactor for magneto-thermal Cut off
- Protection General Contactor
- 8 x direction contactor reversal
- Emergency Stop mushroom button
- White GO button (requires operator to be present) with light indication
- 8 x 3-position travel direction switches (UP-OFF-DOWN)
- 8 x green LED lights indicating channel UP preselection
- 8 x white LED lights indicating channel DOWN preselection

- XLR 5-pole OUT Link panel socket
- XLR 5-pole IN Link + REMOTE panel socket
- 2x XLR 4-pole for load cell / limit switch / E-stop
- The unit is supplied with a 1 meter link cable XLR 5-pole male/female

Technical Specifications:

- Power Supply: 1 mobile plug CEE
- 230/400VAC 32A
- 6H 3 P+N+E with mechanical phase inverter
- Outputs: 4 x 19 pin circular multi-pin female connector.
- Two channel power and 2 channel control per connector
- Dimensions: 5U rack box 300mm depth
- Weight: 25 kg / 55.1 lbs





Multi-purpose built-in rail systems with modules that move LED screens, scenery and lights. They are easily used since they are modular and stackable for storage. Two models are available, the 52 version for heavy duty applications and the 40 version for small-medium sized projects. The modules may be managed with the most common control systems on the market. The possible movements are horizontal (right-left and left-to-right), vertical (up-down and down-up) and 360° rotation, clockwise and counter-clockwise (only in the larger version).

DST 40 Single Elements

The system consists of a 40 stacking truss provided with a single track and a foldable dolly. It is also available with a single track without a dolly. The system, which is modular and very easy to assemble, features a motorised and a slave trolley. It is made in dark grey to absorb light, but other colours are available on request.

Product Features:

- Stackable
- May be brought on the stage with their dolly, which folds upward without the need of being stored when the truss works
- Easily assembled with the trolley which can be mounted even before rigging activities
- Use of a few accessories that can be set up also on curved tracks
- All trolleys can run on straight and curved tracks
- They can be used in various applications to move, open and rotate LED screens, scenery and projectable panels, such as like concerts and other events in general

DST 40 Trusses

DST 40/1600 Truss



DST 40/1600 Truss with built-in foldable trolley



DST 40 Modules

Motorised Trolley



Load capacity: 200 kg
Motor: 0.25kW
400V - 1350 rev/min
Silent wheels / Variable speed

DST 52 Single Elements

The system consists of a 52 stacking truss provided with a double track and a foldable dolly. It is also available with a double track without a dolly.

The System, which is modular and very easy to assemble, features a motorised, a slave and a rotation trolley (furnished with a fifth wheel). It is made in dark grey to absorb light, but other colours are available on request.

Product Features:

- Stackable
- May be brought on the stage with their dolly, which folds upward without the need of being stored when the truss works
- Easily assembled with the trolley which can be mounted even before rigging activities
- Use of a few accessories that can be set up also on curved tracks
- All trolleys can run on straight and curved tracks
- They can be used in various applications to move, open and rotate LED screens, scenery and projectable panels, such as like concerts and other events in general

DST52 Trusses

DST 52/5200 Truss



DST 52/5200 Truss with built-in foldable trolley



DST 52/5200 Truss Curved Element



DST 52 Modules

Motorised Trolley

Load capacity: 1200kg (steel wheels) 600 kg (plastic wheels)
Motor: 0.25kW
400V - 1350 rev/min
400V - 1350 rev/min
Silent wheels / Variable speed



Slave Trolley

Load capacity: 1200kg (steel wheels) 600 kg (plastic wheels)
Silent wheels



Rotation Trolley

Load capacity: 1200kg (steel wheels) 600 kg (plastic wheels)
Motor: 0.25kW
400V - 1350 rev/min
Variable speed



Cable Carriage

Load capacity: 100kg



Multi-purpose built-in rail systems with modules that move LED screens, scenery and lights. They are easily used since they are modular and stackable for storage.

MagicQ MQ40N Compact Console

Product Features:

- 10 Playback faders, 200 pages
- 20 Execute buttons
- Complete DMX Lighting Console
- Fits Hand Luggage Restrictions
- Silent Operation
- Free MagicVis visualiser app
- Free MagicHD media player app
- Quick and Easy to Program
- Fully Featured Theatre Stacks
- Pixel Mapping
- iOS/Android remote app



MagicQ MQ40N is part of a new generation of small and lightweight MagicQ Consoles specifically designed for traveling lighting designers. The MagicQ MQ40 fits within the hand luggage restrictions of all the major budget airlines including Ryanair, Easyjet and South West. Based on the same ARM technology used in modern phones and tablets the MagicQ MQ40N has lower power consumption and does not require a fan - enabling silent operation for theatrical and corporate shows.

MagicQ MQ40N features a simplified version of the MagicQ GUI, designed to make the console simple and easy to use for installations, clubs and schools while still featuring advanced features such as MagicVis and MagicHD connectivity options and built-in Pixel Mapper found in all other MagicQ consoles, and utilises the same software and show formats, enabling compatibility between all products in the MagicQ range. MagicQ MQ40N supports a total of four universes either by direct DMX outputs on the rear panel or via network.

MagicQ MQ40N can be connected via network to a PC or Mac running ChamSys free MagicVis lighting visualisation software for full visualisation of all the universes at no extra cost.

MagicQ MQ40N can be connected via network to a PC or Mac running ChamSys free MagicHD media player software for output of up to 8 layers of HD media at no extra cost.

MagicQ MQ40N incorporates high reliability components, including high durability metal Neutrik connectors.

MagicQ MQ40N provides an immensely powerful complete control console in an ultra compact size. It is ideal for easy transport and fitting into small spaces, and is the console of choice for controlling lighting, video and LED. The MagicQ MQ40N also makes an ideal "tech console" for testing lighting on stage or in the warehouse.

Other Features:

- Tracking / non-tracking option
- Fixture, FX and Gel Library
- Built-in Fixture Editor
- Fixture Morphing & Cloning
- Powerful PC/Mac Show Editor
- Rainbow colour picker (CMY, RGB, HSI)
- Individual fade times on any channel
- Easy fanning of parameters and times
- Configurable faders - HTP, LTP, speed, size, masters
- Theatre mark cues, split fades and inhibit masters
- Architectural Zoning and Day/Date support

Specifications:

- | | |
|---------------------------------------|---|
| Universes: 4 | Encoders: 8 |
| Channels: 2048 | Faders: 12 |
| Number of fixtures: Up to 2048 | Rear panel USB ports: 4 |
| Cues: 5000 | Audio input (1 channel, 7 band): Yes |
| Cue stacks: 2000 | Network ports: 1 |
| Palettes: 4096 | Display ports: 1 VGA (fixed resolution 1024x768, non touch) |
| Groups: 5000 | Desk lamp: 1 dual colour |
| Numbers of shows: Virtually unlimited | |

MagicQ MQ60N Compact Console

Product Features:

- 12 Universes (64 in net wing mode with additional PC/Mac)
- 10 Playback faders, 200 pages
- 20 Execute buttons
- Complete Lighting Console
- Fits Hand Luggage Restrictions
- Silent operation
- Free MagicVis visualiser app
- Free MagicHD media player app
- Internal Ethernet Switch
- Built-in UPS
- External touch screen support
- Includes MIDI and Audio support
- Designed and manufactured in the UK



MagicQ MQ60 is part of a new generation of small and lightweight MagicQ Consoles specifically designed for traveling lighting designers. The MagicQ MQ60 fits within the hand luggage restrictions of all the major budget airlines including Ryanair, Easyjet and South West.

MagicQ software features include easy patching from a library of 14000 fixture personalities, simple attribute selection and programming, flexible live lighting control including a powerful built-in Pixel Mapper.

MagicQ MQ60 can be connected via network to a PC or Mac running ChamSys free MagicVis lighting visualisation software for full visualisation of all the universes at no extra cost.

MagicQ MQ60 can be connected via network to a PC or Mac running ChamSys free MagicHD media player software for output of up to 8 layers of HD media at no extra cost.

MagicQ MQ60 features the same flexible lighting control, media server connectivity and built-in Pixel Mapper found in all MagicQ consoles, and uses the same software and show formats, enabling compatibility between all MagicQ products.

MagicQ MQ60 supports 12 universes over Ethernet using Art-Net I, II or III, Pathport, or Streaming ACN. In addition there are four fully patchable direct DMX outputs on the rear panel. For larger shows the MQ60 can be used as a net wing to a PC or Mac running free MagicQ software to control 64 universes - simply connect via a network cable.

MagicQ MQ60 incorporates high reliability components, including high durability metal Neutrik Ethercon locking connectors for easy and reliable networking. As with other MagicQ consoles, the Ethernet switch is protected by the UPS, thus ensuring that both the console and the network switch maintain operation even during a power loss.

MagicQ MQ60 features a built-in touch screen with the same resolution as the MagicQ MQ100 consoles, but in a more compact size. In addition, there is an external monitor output for a separate display, which can be a USB or serial touch screen.

Based on the same ARM technology used in modern phones and tablets the MagicQ MQ60 has lower power consumption and does not require a fan - enabling silent operation for theatrical and corporate shows. MIDI and Audio support is included in the MQ60 as standard - there is no need for an extra external interface.

MagicQ MQ60 provides an immensely powerful complete control console in an ultra compact size. It is ideal for easy transport and fitting into small spaces, and is the console of choice for controlling lighting, video and LED. The MagicQ MQ60 also makes an ideal "tech console" for testing lighting on stage or in the warehouse.

Other Features:

- Quick and Easy to Program
- Fully Featured Theatre Stacks
- Advanced Media Server Support
- Fixture Morphing & Cloning
- LED Pixel Mapping
- Powerful PC/Mac Show Editor
- Fixture, FX and Gel Library
- Built-in Fixture Editor
- Fixture morphing and cloning
- Tracking / non-tracking option
- Rainbow colour picker (CMY, RGB, HSI)
- Individual fade times on any channel

- Easy fanning of parameters and times
- Configurable faders - HTP, LTP, speed, size, masters
- Theatre mark cues, split fades and inhibit masters
- Client/Server network architecture
- Multiple console playback tracking
- Multiple console programming
- Built-in Web Server
- Built-in UPS (~15 minutes)
- Remote console control
- Visualiser support (including patch transfer)
- Architectural Zoning and Day/Date support

Specifications:

- | | |
|--|---|
| Universes: 12 (up to 64 in net wing mode with additional PC/Mac) | External monitor: 1 |
| Channels: 6144 | Rear panel USB ports: 4 |
| Number of fixtures: Up to 6144 | Front panel USB port: 1 |
| Cues: 5000 | Audio input (1 channel, 7 band) RS232 |
| Cue stacks: 2000 | Remote contact switch |
| Palettes: 4096 | MIDI Notes in/out |
| Groups: 5000 | UPS |
| Numbers of shows: Virtually unlimited | The MQ60 uses a 12v 0.8Ah Sealed Lead Acid Battery. |
| Media server support: 50 (each different content) | Desk lamp: 1, Dual Colour |
| Encoders: 8 | Illuminated soft buttons |
| Faders: 12 | |
| Direct DMX ports: 4 | |
| Network ports: 4 | |

MagicQ MQ80 Compact Console

The MagicQ MQ80 is an extremely powerful console in a small size, supporting 24 universes direct from the console. The large central touch screen provides easy access to all MagicQ features and display and selection from full lighting plots.

Product Features:

- 24 Universes
- 10 Playback faders, 200 Pages
- 20 Execute buttons
- 202 virtual playbacks
- Internal Ethernet Switch
- Built-in UPS
- External monitor (full HD, can be touch)
- Includes MIDI, Audio and Timecode input support
- Free MagicVis visualiser app
- Free MagicHD media player app
- Designed and manufactured in the UK



MagicQ MQ80 features the same flexible lighting control, media server connectivity and built-in Pixel Mapper found in all MagicQ consoles, and uses the same software and show formats, enabling compatibility between all MagicQ products. New shows can be loaded into MagicQ consoles running older software and old shows can be loaded into newer software.

MagicQ software features include easy patching from a library of 13000 fixture personalities, simple attribute selection and programming, flexible live lighting control and a powerful built-in Pixel Mapper.

MagicQ MQ80 can be connected via network to a PC or Mac running ChamSys free MagicVis lighting visualisation software for full visualisation of all the universes at no extra cost.

MagicQ MQ80 can also be connected via network to a PC or Mac running ChamSys free MagicHD media player software for output of up to 8 layers of HD media at no extra cost.

MagicQ MQ80 outputs all universes direct over Ethernet using Art-Net I, II or III, Pathport, or Streaming ACN – there is no need for network nodes.

MagicQ MQ80 incorporates high reliability components, including high durability metal Neutrik Ethercon locking connectors for easy and reliable networking. As with other MagicQ consoles, the Ethernet switch is protected by the UPS, thus ensuring that both the console and the network switch maintain operation even during a power loss.

MagicQ MQ80 features an inbuilt power supply and UPS with locking Powercon connectors that accept voltages from 110V to 240V AC. The MagicQ MQ80 has a Kensington security slot for securing the product. Both soft bags and flight cases are available as optional extras.

Other Features:

- Quick and Easy to Program
- Fully Featured Theatre Stacks
- Advanced Media Server Support
- Fixture Morphing & Cloning
- LED Pixel Mapping
- Fixture Plot View including Target Focus
- Powerful PC/Mac Show Editor
- Fixture, FX and Gel Library
- Built-in Fixture Editor
- Fixture morphing and cloning
- Tracking / non-tracking option
- Rainbow colour picker (CMY, RGB, HSI)

- Individual fade times on any channel
- Easy fanning of parameters and times
- Configurable faders - HTP, LTP, speed, size, masters
- Theatre mark cues, split fades and inhibit masters
- Client/Server network architecture
- Multiple console playback tracking
- Multiple console programming
- Built-in Web Server
- Remote console control
- Visualiser support (including patch transfer)
- Architectural Zoning and Day/Date support
- Built-in UPS (~15 minutes)

Specifications:

- Universes: 24
- Channels: 12288
- Number of fixtures: Up to 12288
- Cues: 5000
- Cue stacks: 2000
- Palettes: 4096
- Groups: 5000
- Numbers of shows: Virtually unlimited
- Media server support: 50 (each different content)
- Encoders: 8
- Faders: 13
- Direct DMX ports: 4

- Network ports: 4
- External monitor: Up to 1920x1200
- USB ports: 6 (including 1 on front panel for easy access)
- Audio input (1 channel, 7 band)
- MIDI Notes in/out
- LTC input
- Inbuilt UPS
- The MQ80 uses a 12v 0.8Ah Sealed Lead Acid Battery.
- Variable Speed Fan
- Dual Colour Desk lamp

MagicQ Extra Wing Compact Compact Console

Product Features:

- 12 Playback Faders
- 12 Playback Execute Buttons
- Full Electronic Legending
- Connect to MagicQ Compact and Full Size Consoles
- Connect to MagicQ PC or Mac
- Up to 8 Wings per System
- Dual Playback Sections
- Split Playback Pages
- Separate Page Up/Down Buttons
- USB Connection
- Dimmable LED Desk Lamp
- Built-in PSU
- Designed and manufactured in the UK



The Extra Wing Compact is designed to allow users of MagicQ to extend the number of physical playbacks available to them. It has a total of 24 playbacks, split into 2 sections - one section with 12 faders and one section with 12 Execute buttons.

Each section has separate Next and Previous page buttons. The 12 playbacks faders feature Flash, Go and Select buttons, together with an LCD display for legending. The 12 playbacks with Execute buttons consist of 12 Select and Execute buttons, and an LCD display for legending.

It has an internal USB hub which enables multiple Extra Wings to be connected together.

On the rear panel there is a locking Neutrik Powercon connector, a USB socket for connection to the main MagicQ system, dual USB expansion sockets and a console lamp socket.

Other Features:

- Quick and Easy to Program
- Fully Featured Theatre Stacks
- Advanced Media Server Support
- Fixture Morphing & Cloning
- LED Pixel Mapping
- Fixture Plot View including Target Focus
- Powerful PC/Mac Show Editor
- Fixture, FX and Gel Library
- Built-in Fixture Editor
- Fixture morphing and cloning
- Tracking / non-tracking option
- Rainbow colour picker (CMY, RGB, HSI)
- Individual fade times on any channel

- Easy fanning of parameters and times
- Configurable faders - HTP, LTP, speed, size, masters
- Theatre mark cues, split fades and inhibit masters
- Client/Server network architecture
- Multiple console playback tracking
- Multiple console programming
- Built-in Web Server
- Remote console control
- Visualiser support (including patch transfer)
- Architectural Zoning and Day/Date support
- Built-in UPS (~15 minutes)

Specifications:

- 12 Playback Faders
- 12 Playback Executes
- Full Electronic Legending
- Connect to MagicQ Consoles
- Connect to MagicQ PC or Mac
- Up to 8 Wings per System
- Dual Playback Sections
- Split Playback Pages

- Separate Page Up/Down Buttons
- USB Connection
- Dimmable Dual Colour LED Desk Lamp
- LCD Displays: 6
- Connect to MagicQ PC or Mac
- Faders: 12
- Flash Buttons: 24
- Playback Buttons: 40
- Dimmable LED Console Lamp: 1 Dual Colour

MagicQ MQ100 Pro 2014 Pro Console

Product Features:

- 64 Universes
- 10 Full Playbacks (202 virtual)
- Built-in Ethernet Switch
- Built-in UPS
- Solid State Drive
- Complete Console Solution
- MIDI, SMPTE, Audio ports
- Designed and manufactured in the UK



MagicQ MQ100 Pro 2014 provides an immensely powerful control console - 64 universes direct via ArtNet, ACN or Pathport. All 64 universes are processed on-board - no extra processing nodes required. 32768 channels in a compact package, proven to run at full speed with all channels fully patched, there really is no similarly packaged console that can sustain this performance.

MagicQ software features easy patching from a library of 9000 fixture personalities, simple attribute selection and programming, flexible live lighting control including a powerful built-in Pixel Mapper.

MagicQ MQ100 Pro 2014 can be connected via network to a PC or Mac running ChamSys free MagicVis lighting visualisation software for full visualisation of all 64 universes at no extra cost.

MagicQ MQ100 Pro 2014 can be connected via network to a PC or Mac running ChamSys free MagicHD media player software for output of up to 8 layers of HD media at no extra cost.

MagicQ Pro 2014 features an in-built high speed Ethernet switch, with 4 separate high durability metal Neutrik Ethercon locking connectors on the rear panel enabling easy and reliable networking. As with the rest of the MagicQ console, the Ethernet switch is protected by the UPS, thus ensuring that both the console and the network switch maintain operation even during power loss.

MagicQ Pro 2014 supports MIDI in and out, LTC in and out and Audio input on the rear panel.

Other Features:

Tracking / non-tracking option
Fixture, FX and gel library
Built-in fixture editor
Built-in media engine
LED pixel mapping
Fixture morphing and cloning
Rainbow colour picker (CMY, RGB, HSI)
Individual fade times on any channel
Easy fanning of parameters and times
Configurable faders - HTP, LTP, speed, size, masters

Theatre mark cues, split fades and inhibit masters
Client/server network architecture
Multiple console playback tracking
Remote console control
Visualiser support (including patch transfer)
Architectural zoning and day/date support
Built-in UPS (~15 mins)
Handy armrest storage compartment
Keyboard, mouse and Dust Cover
MIDI & SMPTE built in
Audio Input

Specifications:

Universes: 64
Channels: 32768
Number of fixtures: Up to 32768
Cues: 5000
Cue Stacks: 2000
Palettes: 4096
Groups: 5000
Numbers of shows: Virtually unlimited
Media Server support: 50 (each different content)

Encoders: 8
Network ports: 4
USB ports: 5
Direct DMX512 ports: 4
External monitor port: Up to 1920x1080
Dual colour dimmable LED console lamps: 2 Dual Colour

MagicQ MQ 200 Pro 2014 Pro Console

Product Features:

- 64 Universes
- 34 Full Playbacks (Execute Variant 22 Fader, 36 button)
- Built-in Ethernet Switch
- Built-in UPS
- Solid State Drive
- Complete Console Solution
- Designed and manufactured in the UK



The MagicQ MQ200 Pro 2014 provides an immensely powerful control console - 64 universes direct via ArtNet, ACN or Pathport. All 64 universes are processed on-board - no extra processing nodes required. 32768 channels in a compact package, proven to run at full speed with all channels fully patched, there really is no similarly packaged console that can sustain this performance.

MagicQ software features easy patching from a library of 9000 fixture personalities, simple attribute selection and programming, flexible live lighting control including a powerful built-in Pixel Mapper.

The MagicQ MQ200 Pro 2014 can be connected via network to a PC or Mac running ChamSys free MagicVis lighting visualisation software for full visualisation of all 64 universes at no extra cost.

The MagicQ MQ200 Pro 2014 can be connected via network to a PC or Mac running ChamSys free MagicHD media player software for output of up to 8 layers of HD media at no extra cost.

MagicQ Pro 2014 features an in-built high speed Ethernet switch, with 4 separate high durability metal Neutrik Ethercon locking connectors on the rear panel enabling easy and reliable networking. As with the rest of the MagicQ console, the Ethernet switch is protected by the UPS, thus ensuring that both the console and the network switch maintain operation even during power loss.

The MagicQ Pro 2014 supports MIDI in and out, LTC in and out and Audio input on the rear panel.

The MQ200 Pro 2014 is available in two different variants depending on the choice of the Wing section - the standard MQ200 with 34 fader playbacks or the MQ200 Execute with 22 physical fader playbacks and 36 button playbacks. In both variants the different sections have individual page controls.

MagicQ Pro 2014 features an built-in high speed Ethernet Switch, with 4 separate high durability metal Neutrik Ethercon locking connectors on the rear panel enabling easy and reliable networking. As with the rest of the MagicQ console, the Ethernet Switch is protected by the UPS, thus ensuring that both the console and the network switch maintain operation even during power loss.

The MagicQ Pro 2014 supports MIDI in and out, LTC in and out and Audio input on the rear panel.

Other Features:

Tracking / non-tracking option
Fixture, FX and gel library
Built-in fixture editor
Built-in media engine
LED pixel mapping
Fixture morphing and cloning
Rainbow colour picker (CMY, RGB, HSI)
Individual fade times on any channel
Easy fanning of parameters and times
Configurable faders - HTP, LTP, speed, size, masters
Theatre mark cues, split fades and inhibit masters

Client/server network architecture
Multiple console playback tracking
Built-in web server
Remote console control
Visualiser support (including patch transfer)
Architectural zoning and day/date support
Built-in UPS (~15 mins)
Keyboard, mouse and dust cover
Handy armrest storage compartment
Built-in MIDI & SMPTE
Audio Input

Specifications:

Universes: 64
Channels: 32768
Number of fixtures: Up to 32768
Cues: 5000
Cue Stacks: 2000
Palettes: 4096
Groups: 5000
Numbers of shows: Virtually unlimited
Media Server support: 50 (each different content)

Encoders: 8
Faders: 13+24 (Execute Variant 13+12)
Network ports: 4
USB ports: 4
Direct DMX512 ports: 4
External monitor port: Up to 1920x1080
Dimmable dual colour LED console lamps: 3



MagicQ MQ300 Pro 2014 Pro Console

Product Features:

- 64 Universes
- 58 Full Playbacks(82 on Execute Variant - 46 Fader, 36 Button)
- Built-in Ethernet Switch
- Built-in UPS
- Solid State Drive
- Complete Console Solution
- Designed and manufactured in the UK



The MagicQ MQ300 Pro 2014 provides an immensely powerful control console - 64 universes direct via ArtNet, ACN or Pathport. All 64 universes are processed on-board - no extra processing nodes required. 32768 channels in a compact package, proven to run at full speed with all channels fully patched, there really is no similarly packaged console that can sustain this performance.

MagicQ software features easy patching from a library of 9000 fixture personalities, simple attribute selection and programming, flexible live lighting control including a powerful inbuilt Pixel Mapper.

The MagicQ MQ300 Pro 2014 can be connected via network to a PC or Mac running ChamSys free MagicVis lighting visualisation software for full visualisation of all 64 universes at no extra cost.

The MagicQ MQ300 Pro 2014 can be connected via network to a PC or Mac running ChamSys free MagicHD media player software for output of up to 8 layers of HD media at no extra cost.

MagicQ Pro 2014 features an built-in high speed Ethernet switch, with 4 separate high durability metal Neutrik Ethercon locking connectors on the rear panel enabling easy and reliable networking. As with the rest of the MagicQ console, the Ethernet switch is protected by the UPS, thus ensuring that both the console and the network switch maintain operation even during power loss.

The MagicQ Pro 2014 supports MIDI in and out, LTC in and out and Audio input on the rear panel.

The MQ300 Pro 2014 is available in two different variants depending on the choice of the Wing section - the standard MQ300 with 58 fader playbacks or the MQ300 Execute with 46 physical fader playbacks and 36 button playbacks. In both variants the different sections have individual page controls.

MagicQ Pro 2014 features an built-in high speed Ethernet Switch, with 4 separate high durability metal Neutrik Ethercon locking connectors on the rear panel enabling easy and reliable networking. As with the rest of the MagicQ console, the Ethernet Switch is protected by the UPS, thus ensuring that both the console and the network switch maintain operation even during power loss.

The MagicQ Pro 2014 supports MIDI in and out, LTC in and out and Audio input on the rear panel.

Other Features:

- Tracking / non-tracking option
- Fixture, FX and gel library
- Built-in fixture editor
- Built-in media engine
- LED pixel mapping
- Fixture morphing and cloning
- Rainbow colour picker (CMY, RGB, HSI)
- Individual fade times on any channel
- Easy fanning of parameters and times
- Configurable faders - HTP, LTP, speed, size, masters
- Theatre mark cues, split fades and inhibit masters

- Client/server network architecture
- Multiple console playback tracking
- Built-in web server
- Remote console control
- Visualiser support (including patch transfer)
- Architectural zoning and day/date support
- Built-in UPS (~15 mins)
- Keyboard, mouse and dust cover
- Handy armrest storage compartment
- Inbuilt MIDI & SMPTE
- Audio Input

Specifications:

- Universes: 64
- Channels: 32768
- Number of fixtures: Up to 32768
- Cues: 5000
- Cue Stacks: 2000
- Palettes: 4096
- Groups: 5000
- Numbers of shows: Virtually unlimited
- Media Server support: 50 (each different content)

- Encoders: 8
- Faders: 13+48 (Execute 13+24+12)
- Network ports: 4
- USB ports: 4
- Direct DMX512 ports: 4
- External monitor port: Up to 1920x1080
- Dual colour dimmable LED console lamps: 4

MagicQ Playback Wing Pro Console

Product Features:

- 24 Playback Faders
- 24 Flash, Go/Back, Select Buttons
- Full Electronic Legending
- Connect to MagicQ Consoles
- Connect to MagicQ PC or Mac
- Up to 8 Wings per System
- Dual Playback Sections
- Split Playback Pages
- Separate Page Up/Down Buttons
- USB Connection
- Dimmable LED Desk Lamp
- Armrest Storage Compartment
- Designed and manufactured in the UK



Extend your MagicQ Console with one or more Playback wings. Each Playback Wing has two banks of 12 Playbacks, each individually paged. MagicQ Playback Wings connect to MagicQ Consoles via USB. No extra software required, just connect the Wing to the Console, enable the wing in the Console options and the Playbacks are ready to control your show.

MagicQ Playback Wings can be used on MagicQ PC systems together with MagicQ Mini, Maxi or standard PC Wings using the same MagicQ PC software. With up to eight Playback Wings you'll never run out of playbacks. A flight case is available to purchase for the Playback Wing otherwise it will be supplied with a shipping case to protect the wing while in transit.

Supported by MQ40, MQ60, MQ70, MQ100, MQ200, MQ300 series consoles.

Specifications:

- 24 Playback Faders
- 24 Flash, Go/Back, Select Buttons
- Full Electronic Legending
- Connect to MagicQ Consoles
- Connect to MagicQ PC or Mac
- Up to 8 Wings per System
- Dual Playback Sections
- Split Playback Pages
- Separate Page Up/Down Buttons
- USB Connection
- Dimmable LED Desk Lamp
- Armrest Storage Compartment
- LCD Displays: 6
- Faders: 24
- Flash Buttons: 24
- Playback Buttons: 52
- Dual colour dimmable Desk Lamp: 1

“All ChamSys products are designed and manufactured in the UK - this means they are fully assembled, tested and inspected under our control. We do not manufacture any products in the far east or China. We use high quality components including Alps faders, HPRG encoders and Neutrik connectors.”

The MagicQ Stadium

Highest level of control



The MagicQ Stadium is a new control console range from ChamSys designed to operate at the highest level of show control. MagicQ Stadium enables shows to be designed from concept to implementation and to control all elements of a show - lighting, media, LED and plotting. Supporting a minimum of 100 universes on-board with no external processing MagicQ Stadium consoles will be the most powerful "all in one" consoles available. Together with best in class touch displays, numerous playbacks and an incredible price, the MagicQ Stadium consoles are the best value top level console on the market.

Dual high quality full HD multi touch monitors provide the core user interface of the Stadium, allowing detailed Plot views, Patch lists, item selection, visualisations and media previews.

Stadium consoles will introduce more theatrical features such as full 100mm dual crossfade faders and a dedicated intensity wheel to satisfy the needs of Theatre users. The MagicQ Stadiums are fully show compatible with consoles from the MagicQ Pro and the MagicQ

Compact Ranges maintaining the existing features:

- Familiar programming button layout
- Eight attribute wheels ensure easy access to fixture attributes.
- Integration with MagicVis and MagicHD
- Multi source Blind visualisation

MagicQ Extra Wing Compact

Product Features:

- 12 Playback Faders
- 12 Playback Execute Buttons
- Full Electronic Legending
- Connect to MagicQ Compact and Full Size Consoles
- Connect to MagicQ PC or Mac
- Up to 8 Wings per System
- Dual Playback Sections
- Split Playback Pages
- Separate Page Up/Down Buttons
- USB Connection
- Dimmable LED Desk Lamp
- Built-in PSU
- Designed and manufactured in the UK



The Extra Wing Compact is designed to allow users of MagicQ to extend the number of physical playbacks available to them. It has a total of 24 playbacks, split into 2 sections - one section with 12 faders and one section with 12 Execute buttons.

Each section has separate Next and Previous page buttons. The 12 playbacks faders feature Flash, Go and Select buttons, together with an LCD display for legending. The 12 playbacks with Execute buttons consist of 12 Select and Execute buttons, and an LCD display for legending.

It has an internal USB hub which enables multiple Extra Wings to be connected together.

On the rear panel there is a locking Neutrik Powercon connector, a USB socket for connection to the main MagicQ system, dual USB expansion sockets and a console lamp socket.

Other Features:

- 12 Playback Faders
- 12 Playback Executes
- Full Electronic Legending
- Connect to MagicQ Consoles
- Connect to MagicQ PC or Mac
- Up to 8 Wings per System

- Dual Playback Sections
- Split Playback Pages
- Separate Page Up/Down Buttons
- USB Connection
- Dimmable Dual Colour LED Desk Lamp

Specifications:

- LCD Displays: 6
- Faders: 12
- Flash Buttons: 24
- Playback Buttons: 40
- Dimmable LED Console Lamp: 1 Dual Colour

MagicQ Wing Mini

Product Features:

- USB Connection to PC or Mac
- Windows, Linux or OSX
- 10 Playback Faders & Buttons
- Direct DMX Output
- Kensington Lock Slot
- Lightweight Durable Case
- 64 Universes
- Designed and manufactured in the UK



The MagicQ Mini Wing is an extremely powerful USB control wing for connecting to your PC or Mac to control lighting, video and LED with the MagicQ PC software. MagicQ software runs under Windows, OSX or Linux. MagicQ software is free and uniquely the outputs are fully enabled, allowing you to run shows of up to 64 Universes.

The MagicQ Mini Wing is the smallest wing in the MagicQ range, designed for playback of MagicQ shows. The MagicQ Mini Wing is targeted at installations, which are generally programmed only once and changed infrequently. It also provides a cost-effective solution for individuals with small budgets, and as a useful back-up for MagicQ consoles.

The Mini Wing has one fully patchable direct DMX output. Connection to the PC is via USB. Power is taken from the USB connection, so there is no need for an external power supply. The Mini Wing connects to any PC running the MagicQ PC Software. Additional DMX connections can be made via Ethernet.

The MagicQ PC software is the same software that MagicQ consoles run - enabling familiar and flexible GUI lighting control, media server connectivity options and built-in media server for LED grid arrays. And with the ability to transfer your show to other MagicQ consoles over the network or using standard USB memory sticks the MagicQ PC Wing can be used as a powerful off-line show editor or back-up system.

The MagicQ PC Mini Wing provides an immensely powerful PC based console ideal for installing into theatres, clubs, and venues for controlling lighting, video and LED. The Mini Wing is physically very small and light, making it a very attractive solution for Lighting Designers to take with them when they travel. There is no other product available that gives the power of the MagicQ software combined with real faders and buttons, and a DMX output. Comes with plastic presentation case, USB cable and instructions.

Other Features:

- Tracking / non-tracking option
- Fixture, FX and gel library
- Built-in fixture editor
- Built-in media engine
- LED pixel mapping
- Fixture morphing and cloning
- Rainbow colour picker (CMY, RGB, HSI)
- Individual fade times on any channel
- Easy fanning of parameters and times

- Configurable faders - HTP, LTP, speed, size, masters
- Theatre mark cues, split fades and inhibit masters
- Client/server network architecture
- Multiple console playback tracking
- Built-in web server
- Remote console control
- Visualiser support (including patch transfer)
- Architectural zoning and day/date support

Specifications:

- Universes: 64
- Channels: 32768
- Number of fixtures: Up to 32768
- Cues: 5000
- Cue Stacks: 2000
- Palettes: 3096
- Groups: 5000
- Media Server support: 50 (each different content)

- Faders: 11
- Buttons: 35
- Direct DMX512 ports: 1
- Security lock fixing: 1
- Lightweight durable case included: Blue
- Power Supply: USB powered

MagicQ Wing PC Compact

Product Features:

- USB Connection to PC or Mac
- Windows, Linux or OSX
- Programming & Playback Buttons
- 8 Encoders, 12 Faders
- 2 Direct DMX Outputs
- Addition of Previous Page, Group and four Macro Buttons
- Dimmable LED Desk Lamp
- 64 Universes
- Built-in Power Supply
- Built-in USB Hub
- Audio Input
- Fits Hand Luggage Restrictions
- Improved Styling
- Designed and manufactured in the UK



The MagicQ PC Wing Compact is an extremely powerful USB control wing for connecting to your PC or Mac to control lighting, video and LED with the MagicQ PC software. MagicQ PC software runs under Windows, Linux or OSX. MagicQ PC software is free and uniquely the outputs are fully enabled, allowing you to run shows on up to 64 Universes.

MagicQ software includes the free MagicVis visualiser enabling simple visualisation of all 64 universes of lighting control. MagicQ software also includes the free MagicHD media player enabling playback of up to 8 layers of HD media through your PC or Mac 2nd monitor port.

The MagicQ PC Wing Compact enables advanced show programming and playback through real faders, buttons and encoder wheels. It provides easy access to moving light parameters via the 8 rotary encoders, and live show control through the 10 playback faders and cue stack control buttons. In addition there are 2 fully patchable direct DMX outputs on the rear panel.

Improvements from ChamSys original PC Wing include the addition of six extra buttons: Group and four layout/macro buttons. The MagicQ PC Wing Compact is also narrower, so will fit within hand luggage restrictions. Other improvements include the addition of a built-in four port USB hub, in-built power supply and the addition of an audio input for cue stack triggering.

MagicQ is simple and easy to program, enabling really quick setup - you can be up and running your show in seconds. With unrivaled live editing and live timing options, impressive changes can be made live at the touch of a button - no need to spend hours programming complex effects.

The MagicQ PC Wing Compact provides an immensely powerful PC based console in a compact size. Ideal for use by touring Lighting Designers, or for installing into theatres, clubs, and venues, the MagicQ PC Wing Compact holds on the MagicQ PC Wing as the PC solution of choice for controlling lighting, video and LED.

Other Features:

- Tracking / non-tracking option
- Fixture, FX and gel library
- Built-in fixture editor
- Built-in media engine
- LED pixel mapping
- Fixture morphing and cloning
- Rainbow colour picker (CMY, RGB, HSI)
- Individual fade times on any channel
- Easy fanning of parameters and times

- Configurable faders - HTP, LTP, speed, size, masters
- Theatre mark cues, split fades and inhibit masters
- Client/server network architecture
- Multiple console playback tracking
- Built-in web server
- Remote console control
- Visualiser support (including patch transfer)
- Architectural zoning and day/date support

Specifications:

- Universes: 64
- Channels: 32768
- Number of fixtures: Up to 32768
- Cues: 5000
- Cue Stacks: 2000
- Palettes: 3096
- Groups: 5000
- Media Server support: 50 (each different content)
- Faders: 11
- Buttons: 35
- Direct DMX512 ports: 1
- Security lock fixing: 1
- Lightweight durable case included: Blue
- Power Supply: USB powered

SnakeSys B4 Networking

The SnakeSys B4 is a four universe DMX to Ethernet converter. It supports four DMX512 ports that are configurable as either inputs or outputs and one DMX port that is always assigned as an input. The SnakeSys B4 is designed as a multi-purpose box to be used in places where a small portable Ethernet to DMX conversion solution is required.

Product Features:

- Universal Ethernet to DMX Interface
- Four DMX512 Ports (configurable as input or output)
- One dedicated DMX512 input port
- Art-Net and ACN Streaming DMX support
- Can be used with any Art-Net or ACN compliant console
- Universe selectable by rotary switches
- ChamNet remote configuration
- Stand-alone DMX buffer mode
- Can be powered by Power over Ethernet
- Four DMX512 ports via female 5-pin XLR
- One DMX512 dedicated input port via male 5-pin XLR
- Art-Net, ACN Streaming DMX protocols
- Can be powered by Power over Ethernet
- Isolated outputs
- Art-Net subnet and universe selection via rotary switches
- Power, Network and Protocol status LEDs
- Individual output status LEDs
- Locking Neutrik Ethercon network connector
- Locking Neutrik Powercon power connector.



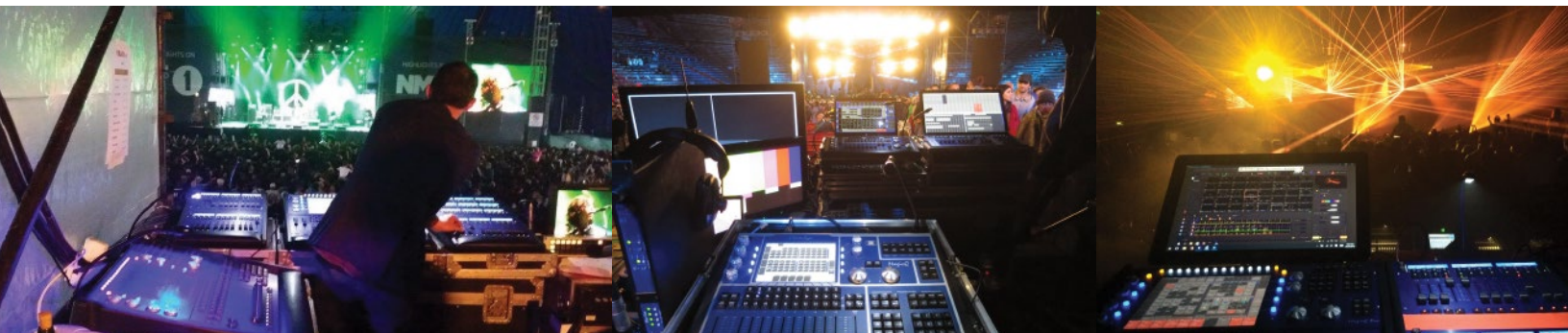
The SnakeSys B4 supports both Art-Net and ACN Streaming DMX network protocols. The DMX512 ports are fully configurable with DMX packet length, framing rate, and timings. In addition the SnakeSys B4 can operate in a non-network mode as a simple four port DMX buffer.

The SnakeSys B4 can be configured from the front panel using a 4-way DIP switch, and 2 rotary switches. In addition the interface can be set to ChamNet mode, where the SnakeSys B4 is configurable from the MagicQ console, avoiding the need for local configuration.

Multiple SnakeSys B4s can be used on a single network, either configured directly from the unit or by using ChamNet control from a MagicQ console. Multiple SnakeSys B4s can be synchronized together to ensure that the DMX output from the console is consistent and does not involve "tearing" either within universes or across multiple universes.

The SnakeSys B4 can be powered from the SnakeSys R4 - avoiding the need to run separate power cables. Alternatively, the SnakeSys B4 can be powered directly from mains input on a locking Powercon connector.

When connected via network to MagicQ, the SnakeSys B4 unlocks the restricted features of MagicQ such as the full screen Execute Window and remote control.



SnakeSys R4 Networking

The SnakeSys R4 is a multi-purpose network distribution node, comprising DMX output ports, DMX input ports and multiple network ports in a 1U rack.

The SnakeSys R4 is designed to be used on stage for Ethernet to DMX conversion, at front of house for DMX to Ethernet conversion, and in any other location that requires conversion between DMX and Ethernet or Ethernet switching.

Using one SnakeSys R4 at front of house and one SnakeSys R4 at stage interconnected by a single CAT 5 network cable, the system provides four DMX lines and three independent network lines all over one cable.

The SnakeSys R4 is a 1U rack featuring:

Product Features:

Four 5-pin DMX output sockets on the front
Four 5-pin DMX input sockets on the rear
Three Ethercon network connections on front (all can supply Power over Ethernet)
Two Ethercon network connections on rear
Full break detect on all four DMX inputs
Two remote contact inputs
Relays to automatically connect inputs to outputs in the event of a power failure
Powercon input

Battery backup
Art-Net and ACN Streaming DMX support
Can be used with any Art-Net or ACN compliant console
Management over network
On-board storage of configuration data
Can power up to three SnakeSys T2s or B4s
RDM capability (subject to firmware development)

Network ports switchable as VLAN
DMX bypass facility
Individually isolated outputs
ChamNet mode
Multiple SnakeSys R4 redundancy mode



SnakeSys R8 Networking

The SnakeSys R8 is an eight universe Ethernet to DMX converter in a 1U rack. It support eight DMX512 ports that are fully configurable as either inputs or outputs. It also features dual Neutrik Ethercon network ports.

The SnakeSys R8 is designed to be used on shows where large numbers of universes are in use and there is a need to convert to and from DMX. It provides the ability to easily switch between different Ethernet or DMX sources.

Product Features:

- Universal Ethernet to DMX interface
- Eight DMX512 ports, configurable as inputs or outputs.
- Dual Ethernet ports
- Art-Net and ACN streaming DMX support
- Can be used with any Art-Net or ACN compliant console
- LCD display with multi-switch selection
- ChamNet remote configuration
- Stand alone DMX buffer mode
- RDM capability (subject to firmware development)

The SnakeSys R8 supports in-built standard configurations, including:

- All Art-Net Output (Art-Net 0-7)
- All Art-Net Input (Art-Net 0-7)
- All ACN Output (Universe 1-8)
- All ACN Input (Universe 1-8)

The SnakeSys R8 uses a simple but powerful Ethernet to DMX engine, based on a custom designed FPGA hardware logic. This ensures maximum performance and reliability - it is truly designed from the ground up for the task. It avoids the complexity and unreliability of other designs based around PC hardware or microprocessor boards. DMX processing and merging is carried out within the FPGA logic. The SnakeSys R8 can be configured over the network from MagicQ via the ChamNet protocol.



SnakeSys S6 (T2) Networking - Stage Box

The SnakeSys Stage Box S6 is a rugged six port Ethernet to DMX converter with an in-built network switch supporting three separate DMX output sockets per universe.

Product Features:

- Six 5-pin DMX output sockets
- Two universes (three sockets per universe)
- Four network ports
- Floor or truss mountable
- Can be powered by Power over Ethernet
- Can be used with any Art-Net or ACN compliant console
- LCD display and buttons for configuration
- RDM capability (subject to firmware development)
- Serial port connector - e.g. for connecting projectors
- Hook clamp fixable in three different orientations
- Omega clamp fixable in four different orientations

- DMX ports: 6 (three per universe)
- DMX universes: 2
- Network ports: 4
- Input ports: 1 (v2 only)



The SnakeSys S6 includes a battery so that it can be configured even when there is no mains power, for example when prepping the lighting rig. Pressing the center button activates the unit giving access to the menu systems. The configuration is stored within the unit. The front panel also includes a label area for marking up the box with a pen if required.

The SnakeSys S6 supports both Art-Net and ACN support, along with ChamNet to allow remote management over the network connection. When in ChamNet mode, the configuration data is stored on board, allowing the device to be restarted.

The SnakeSys S6 has an additional DMX input port on the bottom edge which enables the S6 to work as a stand alone DMX buffer - useful for situations where a truss mount buffer is needed.

Supports Hook Clamp or Omega Clamp. Three mounting points for omega clamps allow the unit to support four different orientations for convenient mounting or hiding within set pieces. Mounting holes are also provided for safety chains and secondary fixings for additional safety or to allow routing of cables.

The SnakeSys Stage Box S6 was previously sold as the SnakeSys T2 - but as many of our customers use the product on the stage floor, on floor mounted stands, as well as on the truss we felt Stage Box better reflected its real value as a general purpose Stage Box that can be mounted anywhere, not just on trusses.

