

# M & H

## *M and H Pump Services cc*

PO BOX 17639

Tel: 011 864 1404

CK: 1991/027957/23

9 JURIE ST

RANDHART

Fax: 011 864 1407

VAT: 4090127483

ALRODE

JOHANNESBURG

Cell: 082 441 2936

[www.mhpumps.co.za](http://www.mhpumps.co.za)

JOHANNESBURG

1457

1449





**OHSE SYSTEM**



**FULL TURNKEY SOLUTIONS**



**TOP BASED CURRENT CLIENTELE**



**EQUIPMENT SCOPE OF SUPPLY**

1. New and refurbished smith depot equipment for all types of hydrocarbons
2. New and refurbished LC depot equipment for all types of hydrocarbons
3. New and refurbished Avery-Hardoll depot equipment for all types of hydrocarbons
4. New and refurbished Avery-Hardoll Aviation equipment
5. New and refurbished Avery-Hardoll Chemical equipment
6. New certified fire safe ball valves from ½" to 36"
7. New certified ASME Spiral wound gaskets ½" to 36"
8. New Aluminum cam locks in aluminum or stainless steel from ½" to 4"
9. New wafer or swing check valves
10. New equipment for bulk holding tanks
11. Top and bottom loading arms
12. Loading gantry equipment
13. New and refurbished pump sets from 10 to 8000lpm Class 1 div1 rated
14. New Ref 1 & 2 rubber fuel hose from 1" to 6"
15. New composite fuel hoses from 1" to 6"
16. Full range of all accessories relating to the petrochemical industry
17. Mobile fuel trailers
18. New and refurbished fixed or mobile fuel storage tanks
19. New and refurbished male and female dry break couplings
20. New and refurbished male and female API coupling for Aviation and fuel depots
21. Auto tank gauging systems (ATG)
22. 1 micron -1000 micron strainers and bag filtration systems
23. Flow controllers and pressure relief valves
24. Schedule 40 & 80 pipe work & fittings to ASME standards

**SCOPE OF SERVICES**

1. General depot maintenance
2. 24hr call out services
3. Mechanical repairs and installations
4. Electrical repairs and installations
5. Civil works
6. Installation of all equipment in equipment scope of supply
7. Pressure testing of petroleum hoses
8. All hazardous maintenance areas and new area installations
9. Loading gantry installations
10. All pipe work maintenance and new installations
11. Tank Cleaning
12. Servicing and reconditioning of all petrochemical equipment (Valves, pumps, bulk meters Etc. )
13. Tanks and pipeline integrity testing
14. Tank and meter calibrations
15. Tank gauging calibration
16. Depot 3D and 2D total station drawings
17. Firefighting installations
18. Planned maintenance programs for shutdown.
19. Filtration systems
20. New pipelines



**METERING DEPOT EQUIPMENT FOR ALL TYPES OF HYDROCARBONS**

LC Bulk Flow Meter



Smith Bulk Flow Meters



LSD Electronic Meter



Registers & Ticket Printers



Prime 4 Flow Meters



K33 Mechanical Meter



K44 Mechanical Meter



Air Eliminators



SABS  
APPROVED  
CALIBRATION  
DONE ON SITE

De-Aerators



Rotor & Blades



**FILTRATION SYSTEMS**

S/Steel Filter Vessels



Bag Filters



Coalescer Separators



Aviation Filtration Trailer



Strainer Housings



Custom Made Basket Strainers



LT & LCM Meter Strainer Baskets





**PUMPS AND PUMP SKIDS**



Air Pumps



Diesel Driven Pump Sets



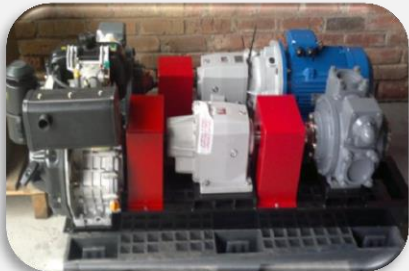
Pumps & Pedestals



Complete Portable Unit



Diesel Engine Pump Skid



Electrical Motor Pump Skid



**CUSTOMISED SKIDS AND TRAILERS**



Diesel & Avgas Trailer



Bulk Transfer Trailer



Dispensing / Decanting Complete Portable Skids



Diesel & Avgas Trailer



Mobile Tank Unit





**VALVES, COUPLINGS AND GANTRY EQUIPMENT**

**Flame Proof Ball Valves; Pressure Relief Valves;  
Thermal Relief Systems; Non-Return Valves;  
Needle Valves; Butterfly Valves(many more)**

**Breakaway Couplings; API  
Couplings; VRU Couplings; Dry  
break Couplings (many more)**



**Back Pressure Valves**



**Control Valves**



**Loading Arms**



**Various Hoses**



**Flanges**



**Various Gaskets**



**Piping Systems**



**Vent Breathers**

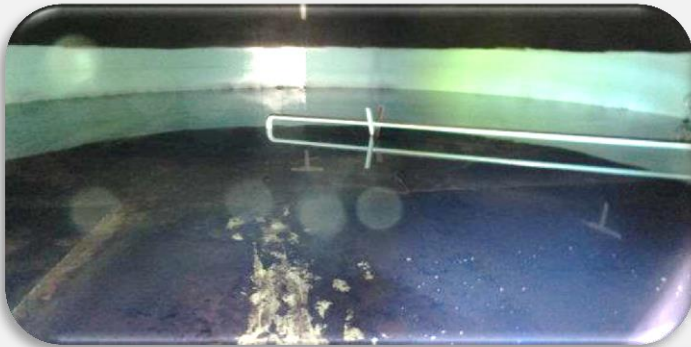


**Various Nozzles**





**TANK CLEANING**



**ELECTRICAL WORKS**














**PUMP OUTS**





- Faudi Aviation
- Kaydon Filtration
- Gammon Technical Products
- Hammonds
- Elaflex
- Fjord Industrial Products
- Sening

**QUALITY CONTROL EQUIPMENT**

<u>Decals</u>	<u>Density &amp; Temperature</u>	<u>Filter Membrane Testing Consumables</u>	<u>KolorKut Paste</u>	<u>Sampling Equipment</u>	<u>Gammon Contamination Test Kit</u>
					
<u>Emcee Conductivity Meter</u>	<u>Fuel Testing Consumables</u>	<u>Sample Retention Cans</u>	<u>Seals and Sealing Wire</u>	<u>Quality Control List</u>	
					

**ISOIL PD METERS**

**FILTER ACCESSORIES**

<u>Isoil BM200; BM400; BM600 Meters</u>	<u>Isoil SBM75; SBM150 Meters</u>	<u>Armstrong Air Eliminators</u>	<u>Deadman/Filter Differential Pressure Protection System</u>	<u>Differential pressure Gauge</u>
				

**CLOSED CIRCUIT SAMPLING & PRODUCT RECOVERY**

<u>4L and 20L Closed Samplers</u>	<u>80L – 160L Closed Samplers</u>	<u>Product Recovery Tank</u>	<u>Air Powered Internal SWD</u>
			



**FILTRATION**

Multi-Purpose Filter Vessels



Faudi General



Coalescers and Separators



Basket Strainers



**BONDING AND EARTHING**

Spring Rewind Reels



Hand Rewind Reels



Lanyard Reel



Ametek Reels



Continuity Tester



Large Hub Hand Rewind Reel



Bonding Cable, Clips and Accessories



**HOSES AND HOSE ACCESSORIES**

Test Pump



Crocodile



Pit Flags



Hose End Fittings



Hose Sleeves and Protection



Refuelling Hose



**DEADMAN SYSTEMS AND ACCESSORIES**

Large Hub Hand Rewind Reel



Deadman/Filter Differential Pressure Protection System



Deadman Switch and Accessories





**VALVES, SIGHT FLOW INDICATORS**

Stainless Steel  
Apollo Valves



Flexible Joints



Sight Flow Indicators



Brass Apollo Valves



**ADDITIVE INJECTION EQUIPMENT**

Injection Equipment



Injection System



**GENERAL**

ZVF Underwing  
Nozzle



Underwing to  
Overwing Adaptor



ZVA Overwing  
Nozzle



Avery Equipment  
General Overview



Wing Mats



# Contact Information

## MANAGEMENT

**Roy Rogerson**  
General Manager  
+27 79 776 5403  
roy@mhpumps.co.za

**Mac Magill**  
Owner  
+27 82 441 2936  
mac@mhpumps.co.za

## SALES INTERNAL / EXTERNAL

**Deon Lubbe**  
Internal Sales  
+27 79 650 1949  
deon@mhpumps.co.za

**Chris Gordon**  
Sales Manager  
+27 83 727 1180  
sales2@mhpumps.co.za

**Quintus v.d. Walt**  
Aljac Sales (Aviation)  
+27 60 694 8510  
sales3@mhpumps.co.za

## OPERATIONS / PROJECTS

**Attie v. Niekerk**  
Projects Manager  
+27 79 315 2236  
projects@mhpumps.co.za

**Michelle Versteegh**  
Operations Co-Ordinator  
+27 71 350 3783  
admin@mhpumps.co.za

## ACCOUNTS DEPARTMENT

**Zelda Byleveld**  
Debtors / Creditors  
+27 11 864 1404  
accounts@mhpumps.co.za

**Charmain Barnard**  
Financial Manager  
+27 11 864 1404  
accounts1@mhpumps.co.za

## OFFICE DEPARTMENT

**Cole Balaam**  
HR Department  
+27 11 864 1404  
hr@mhpumps.co.za

**Tyran Magill**  
OHSE  
+27 72 347 3935  
she@mhpumps.co.za

**Michelle Ball**  
Forex / Legal  
+27 11 864 1404  
admin2@mhpumps.co.za

**Cyndi Lourens**  
Key Accounts  
+27 11 864 1404  
info@mhpumps.co.za

Please feel free to contact us or visit our website for more information.

[www.mhpumps.co.za](http://www.mhpumps.co.za)