

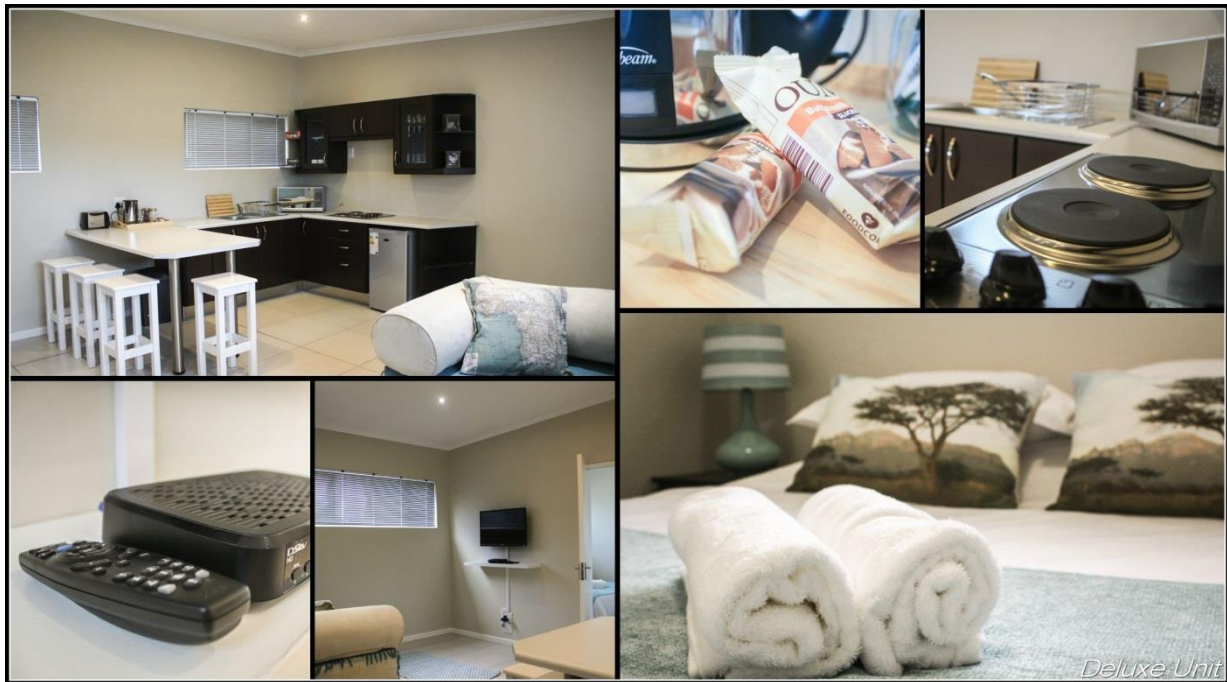
Umoya Cottages

umoya-cottages.co.za

Sleeping Arrangements

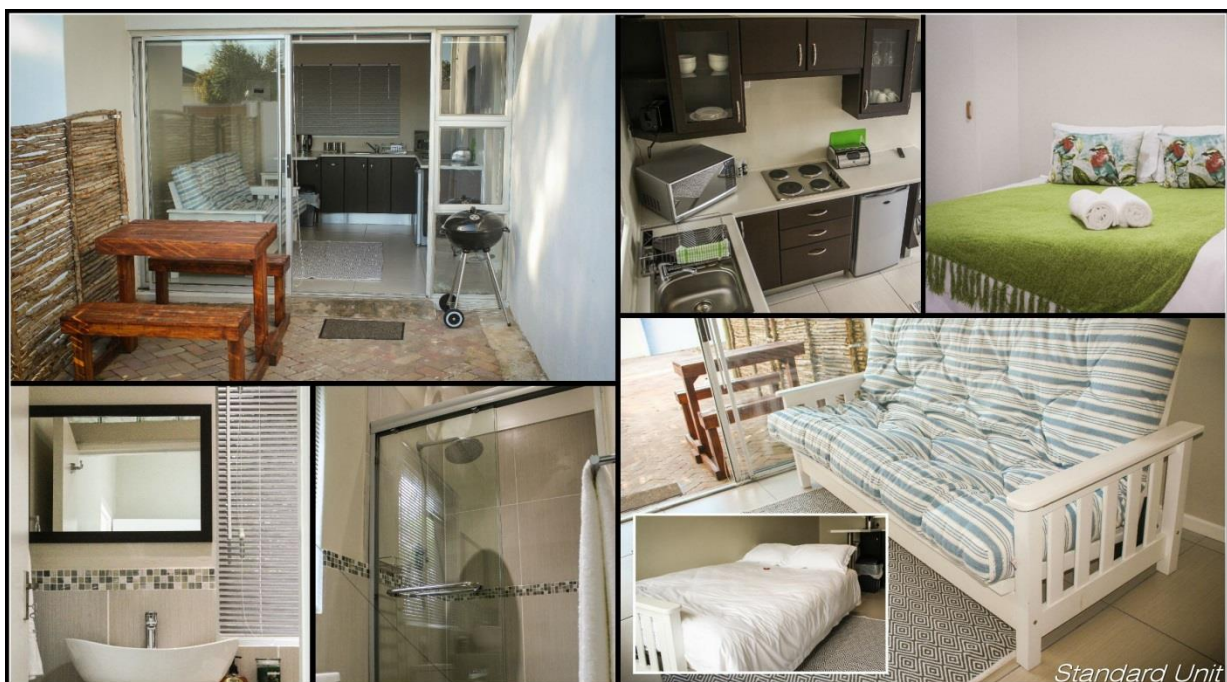
Deluxe Cottage (Sleeps Family of 4 or 2 Business People)

The Deluxe Cottage has one bedroom with a queen bed and a lounge. The lounge has a sleeper couch that can fold out into a king bed. Two single beds may be requested in advance to be placed in the bedroom instead of the queen bed (long stays).



Standard Cottage (Sleeps Family of 3 or 2 Business People)

The Standard Cottage has one bedroom with a queen bed and a lounge. The lounge has a sleeper couch that can fold out into a double bed.



Umoya Cottages

umoya-cottages.co.za

Check-in & Checkout Times

Check-in: 4pm – 8pm
Check-out: Strictly 10am

Payment Arrangements

50% Deposit Required

Please note we kindly request 50% deposit to reserve a room. Please make an EFT payment and send us the proof of payment to secure your booking.

Cancellation Policy

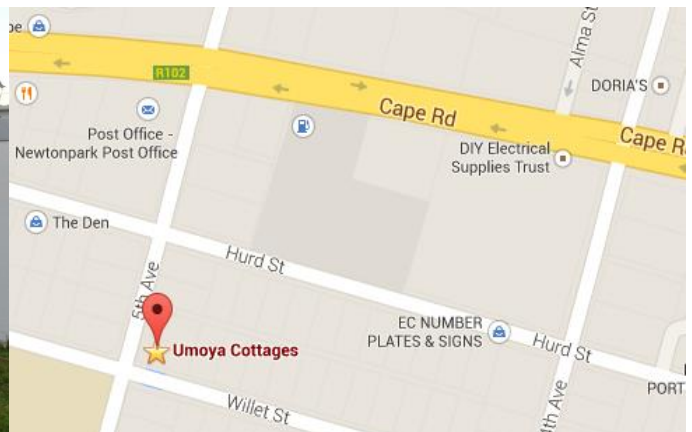
One day bookings - no refund (discretion will be applied)
< 30 days prior to arrival - no refund
> 30, < 60 days prior to arrival - refund 50% of deposit
> 60 days prior to arrival - full refund of deposit (minus 10% banking commissions)

Banking Details

Beneficiary: Dorette de Swardt
Bank: First National Bank
Acc #: 6252 447 0317
Branch Code: 261050
Account Type: Cheque
Branch Name: Newton Park

Physical Address

84 5th Avenue, Newton Park. The entrance is around the corner in Willet Street



Terms & Conditions

Welcome to Umoya Cottages. For your convenience, and to help us keep up the standard at Umoya, please familiarise yourself with our terms and conditions and general information.

Please note that the number of people in this unit is restricted to that of your booking. If management suspects that the above rule is being transgressed, they reserve the right to carry an inspection of the unit anytime during the day or night. If the number of guests is more than the original booking a penalty fee of R250 per guest per night will be charged.

Self-Catering and cleaning services

A clean set of linen and bath towels will be provided every three days for stays longer than five days. General cleaning will be done between 10:00 – 12:00 as often as possible but as a self-catering establishment, guests are responsible for keeping the cottage clean. Cleaning will only be done if the units are not occupied during these times.

Braai and other facilities

Braai (BBQ) facilities have been set up outside of the cottages; please take care when making fires. Please respect your neighbours by refraining from making noise after 21:00 on a week night and 22:00 on weekends.

Check-in and Checkout

Guests are welcome to check in to their accommodation between 2pm and 8pm on the day of arrival. Late arrivals can be accommodated by prior arrangement only. Guests are required to check out by **no later than 10am on the day of departure**. Checkout will result in the charging of a **penalty** of R250 plus an additional R250 penalty for every hour past 10:00.

Smoking

For the comfort of our guests, Umoya Cottages is a strictly non-smoking establishment. Smoking outside of the units is permitted and ashtrays are provided.

Valuables

Umoya Cottages does not accept any liability for loss of or damage to any valuables or property belonging to guests or their visitors. It is therefore the sole responsibility of all guests to make arrangements for adequate insurance coverage on all valuable items prior to arrival. This includes but is not limited to, photographic equipment, laptops or other electronic devices, jewellery, cash and vehicles. **Please do not leave valuables on display.**

General Indemnity for Umoya Cottages

Whilst every care has been taken by Umoya Cottages to ensure the safety of guests and their possessions whilst enjoying our accommodation, Umoya Cottages does not accept any liability in the event that any loss or damage to persons or property is experienced by a guest.

Loss or Damage to Umoya Cottages

Should Umoya Cottages suffer any loss or damage as a result of an act or omission by a guest or visitor of a guest, the guest will remain liable for full reimbursement of such loss or damage incurred and will be billed accordingly.

Right of Admission Reserved

Umoya Cottages at all times reserves the full right of admission and accepts no liability for any loss or damage that may result from the legal and reasonable exercising of such rights. Should Umoya Cottages at any time need to exercise this right, no reimbursements or refunds will be made in this regard.

Extra services

Laundry, Ironing and extra cleaning services are available on request at the following prices:

Laundry - Wash & Fold: R70 per basket

Laundry - Ironing: R10 per item

Daily deep cleaning (Including dishes, bathroom, etc) R70 per day

If guests wish to have their laundry done, arrangements must be made with management, not staff, at least one day in advance. Laundry will be collected at 8am and returned before 6pm. A laundry basket will be supplied when laundry services are requested.

Please contact us if you require any more information or help during your stay:

Dorette 084 086 6917

Guillaume 076 022 1359

We invite you to **Comment & Rate** your stay online:

<http://umoya-cottages.co.za/review/>

We hope you will enjoy your stay with Umoya Cottages!