



Chukuru lodge is a new Guesthouse located just north of Bronkhorstspuit. Our lodge offers comfortable accommodation ideal for contractors, groups and business travelers to the area.

At Chukuru Lodge we accommodate our guests in large Comfortable thatched rooms. The rooms are equipped with en-suite bathrooms, bar fridge and TV with DSTV.

We have a sparkling pool to cool off in on those hot sunny days. There is an entertainment area in the Lapa with a bar, pool table, TV and Braai area.

Other services include mini gym facilities, secretarial services and laundry service.

## Info

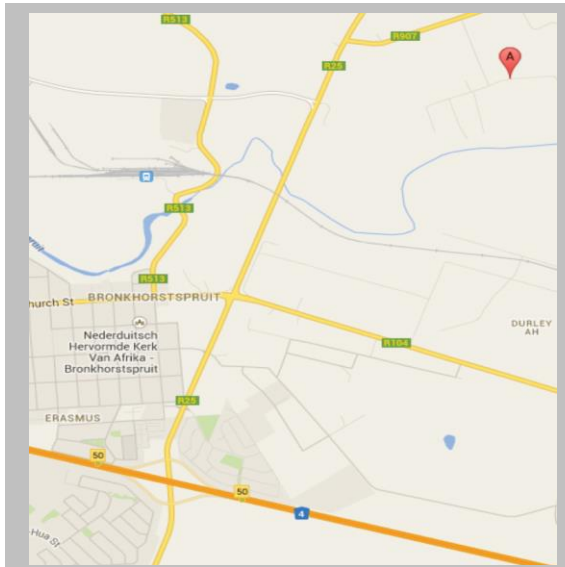
### *Chukuru Lodge*

*Section 95 of the farm Roodepoort  
504 JR  
Vlakfontein road R907*

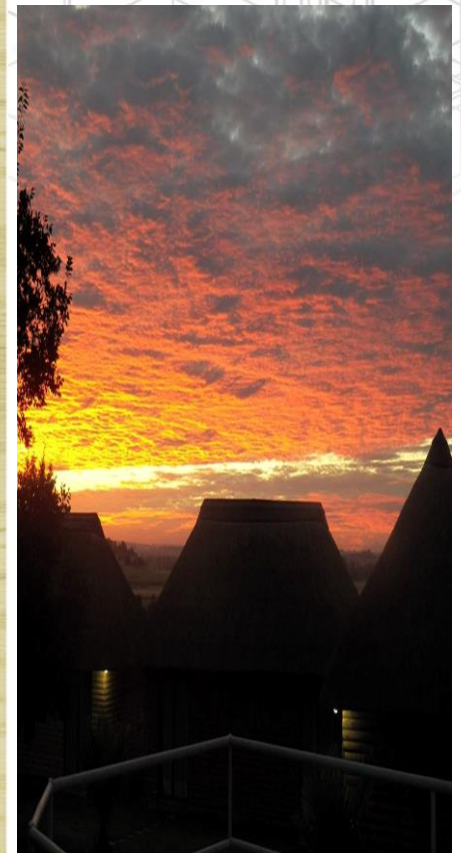
*P O Box 2623  
Bronkhorstspuit  
1020*

[www.chukurulodge.co.za](http://www.chukurulodge.co.za)  
[thinus@chukurulodge.co.za](mailto:thinus@chukurulodge.co.za)  
[info@chukurulodge.co.za](mailto:info@chukurulodge.co.za)

0825670723  
0725771599



## Kusile Accommodation Chukuru Lodge

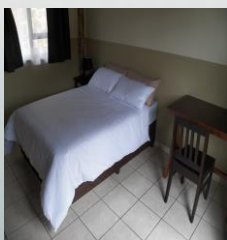
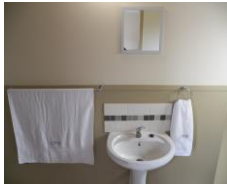


# Rooms

*Quiet surroundings and farm atmosphere*

*Excellent meals and service in Dining room*

*Lapa with pool table, dartboard, braai and bar*



## **Thatched Rooms x 18**

Thatched roof units are detached from the main house.

Each room have a double bed or 2 x ¾ beds, DSTV, a fridge, tea and coffee station and an en-suite bathroom with a shower only.

**All bedding and towels supplied**

**Room cleaned daily**

## **Rates**

Single room: R 250 ppn\*

Sharing room: R200 ppn\*

## **Meals Offered:**

Breakfast – R45 per person\*

Lunch Packs – R30 per person\*

Dinner – R75 per person\*

**\*Monthly rates 20 days +**



Only 30 min from Kusile

6 km from N4 Highway

52 km from Emalahleni / Witbank

56 km from N1 Pretoria

15 km from BHS Dam