

The logo for ZKTeco, featuring the letters 'ZKT' in a bold, italicized sans-serif font, followed by 'eco' in a smaller, lowercase italicized sans-serif font. A small black dot is positioned above the 'o' in 'eco'.

ZKT_{eco}

ZKSoftware | ZKAccess | ZKiVision | ZKAFIS | ZKBiolock

The Leading Security and Time Management Solution Provider

Index

- Introduction
- ZKSoftware – Time & Attendance
- ZKAccess – Access Control
- ZKiVision – Network Surveillance Camera
- ZKBiolock – Biometric Door locks
- ZKAFIS – Automated Fingerprint ID System

Introduction

ZKTeco is a leading global developer of security and time management solutions. It is subdivided into 5 distinct divisions which are known as: ZKSoftware, ZKAccess, ZKiVision, ZKBiolock , ZKAFIS.

- 50,000 square meters manufacturing
- ZKTeco has over 2000 employees
- ZKTeco has sold over 8.5 million units
- Customers in 180 countries.
- 85 patents



Introduction - Factory



Shenzhen R&D Building



Dongguan Industry Base



Industry Base Entrance



Injection Workshop



Die-casting Workshop



Installation Workshop

Introduction - Factory



SMT Workshop



Welding Workshop



Optical Workshop



Logistic Warehouse Center



R&D Team



South Africa



Time and Attendance Management Solution

Time & Attendance is a rapidly growing market especially in industries where employees need real-time access to their time records and schedules. To help reduce the costs associated with T&A and Workforce Management, ZK provides innovative time & attendance terminals which can read employees' faces, fingerprints, and/or ID cards.

Facial Time & Attendance

VF300



3 Inches Touch Screen
200(1:N) Facial Templates
10,000 ID Cards
100,000 Transaction Logs
TCP/IP, USB Host
≤1 sec Verification

VF600



3 Inches Touch Screen
400(1:N) Facial Templates
10,000 ID Cards
100,000 Transaction Logs
TCP/IP, USB Host
≤1 sec Verification

VF700



3 Inches Touch Screen
400(1:N) Facial Templates
10,000 ID Cards
100,000 Transaction Logs
TCP/IP, USB Host
≤1 sec Verification

Multi-bio Time & Attendance

iFace 302



iFace 402



- 4.3 inches Touch Screen, Touch Keypad
- Face capacity: 500
- ID card capacity: 10,000
- Record capacity: 100,000
- Communication: TCP/IP, USB Host, RS232/485, Wiegand Out, Access Control interface for 3rd party Electric Lock, Door Sensor, Exit Button

Fingerprint Time & Attendance

X628-C



U160-C



T5-C



- Fingerprint capacity: 3,000
- Record capacity: 100,000
- Communication: TCP/IP, RS232/485
- Attendance Features: SMS, Workcode, DST, Scheduled bell, etc.
- Options: ID card

Fingerprint T&A with Access Control

iClock 3800



- Operation System: Linux /WinCE
- Fingerprint capacity: 8,000
- Record capacity 200,000
- Communication: TCP/IP, USB, RS232/485
- Access Control Interface for 3rd Party Electric Lock, Exit Button
- High Resolution Camera, Backup Battery
- Options: Wi-Fi, Printer

Fingerprint T&A with Access Control

iClock 990



iClock 580



iClock 700



- Fingerprint capacity: 8,000
- Record capacity: 200,000
- Communication: TCP/IP, RS232/485, USB, Wiegand In&Out
- Access Control Interface for Electric Lock, Exit Button, Alarm, Door Bell, Anti-passback
- Options: ID card, Wi-Fi

RFID Time & Attendance

S400



S500



- 3.5 inches TFT
- ID Card Capacity: 10,000
- Record capacity: 50,000
- Attendance Features: SMS, Workcode, DST, Scheduled bell, Photo-ID etc.
- Communication: TCP/IP, USB Host, RS232/485
- Options: ID card, Mifare card, Wi-Fi, GPRS

Time & Attendance Software Solution

ZKTime.net

ZKTime.Net is a PC-based time & attendance software application which has a very user-friendly interface. With ZKTime.net users can easily create work-shifts and produce dozens of timely reports. An online comprehensive Help file is available to answer all your questions.

The screenshot displays the ZKTime.net software interface. At the top, there is a browser window titled "Clock Assistant Data Master Server" with a search bar and a "Device" dropdown. Below this, the main application window shows a "Device Status" table with columns for Serial number, Device alias name, Status, Transfer time, Interval, and Last m. The table contains several rows of data. To the left of the table is a navigation menu with options like "Company", "Departments", "Shifts", "Attendance", "Reports", "Settings", and "Help". In the center, there are several overlapping windows: a "Shifts" window showing a grid of shifts, an "Attendance" window showing a list of employees and their attendance records, and a "Reports" window showing a list of report types such as "Company Management", "Department Management", "Shift Management", "Attendance Management", "Report Management", and "System Configuration".

Serial number	Device alias name	Status	Transfer time	Interval	Last m
21814020002	1	Online	30:08:34:00	1	06:06
010111111111	182.168.1.130	Offline	30:08:34:05	1	06:06
00360078	182.168.1.138	Offline	30:08:34:09	1	06:06
0180211390001	182.168.1.205	Online	30:08:34:05	1	06:06
010101170000	182.168.1.200	Offline	30:08:34:05	1	04:06
018010080011	182.168.35.183	Offline	30:08:34:09	1	06:06
008102018001	182.168.32.146	Offline	30:08:34:00	1	06:06

Upcoming Products

Biopad 100



- Card capacity: 10000
- Fingerprint templates: 6000
- Transaction capacity: 300000
- Standard built-in Wi-Fi
- Built-in 300,000 pixels camera
- Options: ID/HID, 14 digit user ID, ADMS, Backup battery, SD card

DS 100



- Card capacity: 10000
- Fingerprint templates: 6000
- Transaction capacity: 100,000
- Color TFT screen with GUI Interface
- Communication: TCP/IP, USB-host
- Options: ID, Wi-Fi, GPRS, Photo ID, printer, Backup battery, SD card



Access Control Management Solution

ZKAccess is a division of ZKTeco, which engaged in access control products and solutions. The product line includes IP-based standalone access control, networked access control panel, readers, tripod turnstile and accessories. We provide one-stop R&D and manufacturing service for business partner.

IP-based Standalone Access Control

VF680



VF780



- 3 Inches Touch Screen
- 400(1:N) Facial Templates
- 10,000 ID Cards
- 100,000 Transaction Logs
- TCP/IP, USB(host and client)
- Wi-Fi
- ≤1 sec Verification

Fingerprint Access Control

F17



- IP65 Waterproof
- OLED Screen
- Fingerprint Capacity: 2200
- Card Capacity: 10000
- Log Capacity: 30000
- Communication: TCP/IP, RS485, USB-host
- Wiegand Input and Output
- Access Control Interface for 3rd party Electric Lock, Door Sensor, Exit Button, Alarm, Door Bell

F18



- 2.4" TFT Colour Screen / B&W Screen
- Fingerprint Capacity: 1500 / 3000
- Log Capacity: 30000
- Communication: TCP/IP, RS485, RS232, USB-host
- Wiegand Input and Output
- Access Control Interface for 3rd party Electric Lock, Door Sensor, Exit Button, Alarm, Door Bell

F9



Fingerprint Access Control

MA 300



- Metal Casing with IP54 Waterproof
- Fingerprint Capacity: 3000
- Card Capacity: 10000
- Log Capacity: 100000
- Communication: TCP/IP, RS485, USB
- Wiegand Input and Output
- Access Control Interface for 3rd party Electric Lock, Door Sensor, Exit Button, Alarm, Door Bell

F6



- Fingerprint Capacity: 500
- Log Capacity: 30000
- Communication: RS485, SD Card
- Wiegand Output
- Access Control Interface for 3rd party Electric Lock, Door Sensor, Exit Button, Alarm, Door Bell

Access Control - Slave

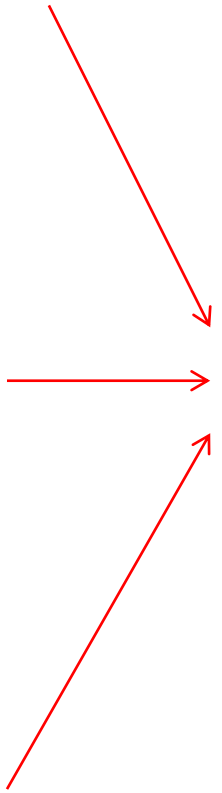
F8-T



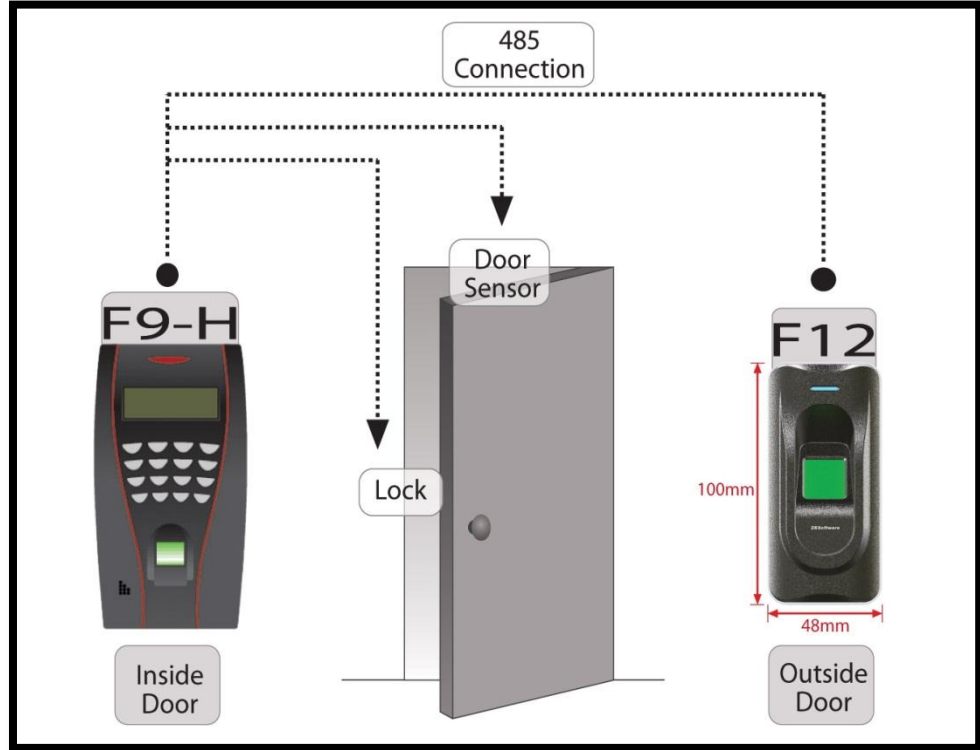
F9



F18



F12



Access Control - Slave

SC 103



SC 403



SCR 100



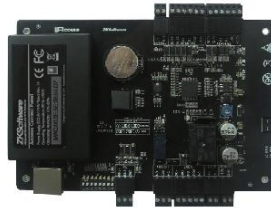
- Card Capacity: 30000
- Log Capacity: 50000
- Communication: TCP/IP, RS485, RS232, USB-host
- Wiegand Input and Output
- Access Control interface for 3rd party Electric Lock, Door Sensor, Exit Button, alarm, Door Bell

- Card Capacity: 30000
- Log Capacity: 50000
- Communication: TCP/IP, RS485, RS232, USB-host
- Wiegand Input and Output
- Access Control interface for 3rd party Electric Lock, Door Sensor, Exit Button, alarm, Door Bell

Access Control Panels

C3-100

1 Door



C3-200

2 Door



C3-400

4 Door



Card Capacity:	30000
Event Capacity:	100000
Communication:	TCP/IP, RS485
Wiegand Input:	2ea
Aux.output:	1ea
Aux.input:	none

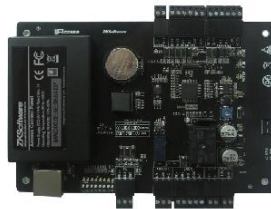
Card Capacity:	30000
Event Capacity:	100000
Communication:	TCP/IP, RS485
Wiegand Input:	4ea
Aux.output:	2ea
Aux.input:	2ea

Card Capacity:	30000
Event Capacity:	100000
Communication:	TCP/IP, RS485
Wiegand Input:	4ea
Aux.output:	4ea
Aux.input:	4ea

Access Control Panels

C3-100

1 Door



C3-200

2 Door



C3-400

4 Door



Card Capacity:	30000
Event Capacity:	100000
Communication:	TCP/IP, RS485
Wiegand Input:	2ea
Aux.output:	1ea
Aux.input:	none

Card Capacity:	30000
Event Capacity:	100000
Communication:	TCP/IP, RS485
Wiegand Input:	4ea
Aux.output:	2ea
Aux.input:	2ea

Card Capacity:	30000
Event Capacity:	100000
Communication:	TCP/IP, RS485
Wiegand Input:	4ea
Aux.output:	4ea
Aux.input:	4ea



KR 100/1/2



KR 200/1/2



KR 600/1/2

Tripod Turnstile Access Control

TS-100



TS-200



Dimension	450L*280W*1000H(mm)
Net Weight	35KG
Packing Dimension	520L*350W*1070H(mm)
Gross Weight	45KG
Boom	Semi / Full-automatic

Dimension	1200L*280W*990H(mm)
Net Weight	45KG
Packing Dimension	1280L*390W*1060H(mm)
Gross Weight	58KG
Boom	Semi / Full-automatic

Access Control Accessories

Electric Locks



Exit Button



Card & Tag



Break Glass



Sensor & Siren



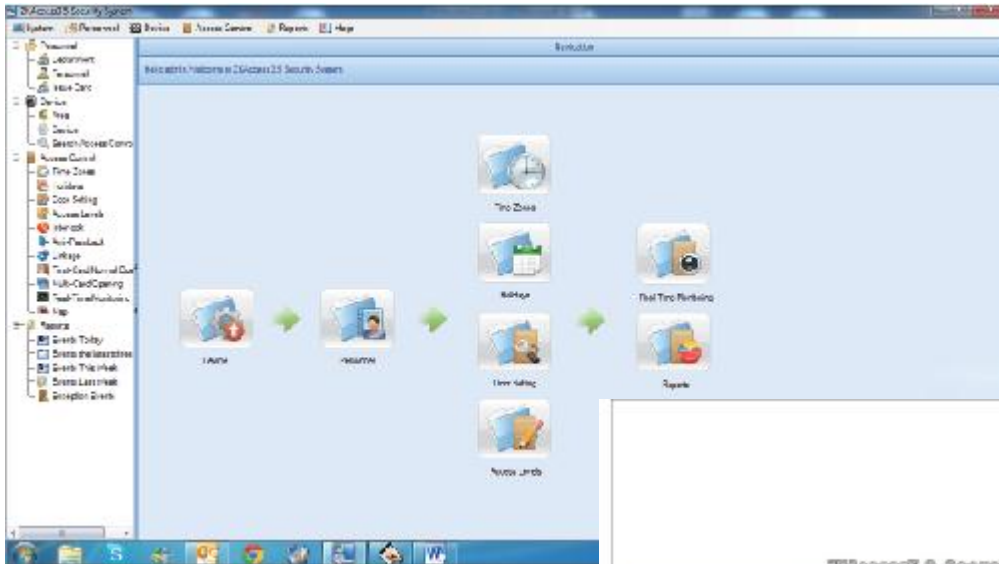
Enrollment



Access Control Software

ZKAccess 3.5

IP access control management software for SME



ZKAccess 5.0

Integrated access control management software



Access Control Software

Features	ZKAccess 3.5	ZKAccess 5.0
License	Free	Yes
System Architecture	Server/Client	Server/Browser
DB	Access, MSSQL	MySQL, MS SQL
Max. Device	20	1024
Time Zone	255	255
Access Level	No limitation	No limitation
Anti-pass back	Yes	Yes
Visual Map	Yes	Yes
Event monitoring	Yes	Yes
Linkage	Yes	Yes
Interlock	Yes	Yes
Multi-card opening	Yes	Yes
First-card opening	Yes	Yes
Passage Mode	Yes	Yes
Video integration	N/A	Yes



Network Video Surveillance

The leading provider of intelligent surveillance & security products and solutions. Established in 2010, ZKiVision is an IP based Video Surveillance solution division of ZKTeco which focuses on providing competitive, feature rich security products like IP cameras, NVRs, Face identification and integrated with access control system.

IPC Range

IR Weatherproof Bullet

- Video Compression : H.264
- Highest Resolution : Megapixel (1280*720)
- Image Sensor: 1/3.2"CMOS
- Lens: 4 or 12mm fixed lens
- IR Distance: 15 or 30m
- Sensitivity: 0.1Lux or 0Lux (IR on)
- Protection Rating: IP66
- Storage: Up to 64GB SD Card local storage
- Standard Function: Alarm, Two-way voice intercom, 485controller, Reset
- Optional Function: POE, Wi-Fi,WDR
- Network Protocol: TCP/IP, HTTP, UDP, ARP, SMTP, FTP, DHCP, NTP



IPC Range

Standard Box

- Video Compression : H.264
- Highest Resolution : Megapixel (1280*720)
- Image Sensor: 1/3.2"CMOS
- Sensitivity: 0.1Lux/F1.2
- Storage : Up to 64GB SD Card local storage
- Standard Function: Alarm, Two-way voice intercom, 485controller, Reset
- Optional Function: POE, Wi-Fi,WDR
- Network Protocol: TCP/IP, HTTP, UDP, ARP, SMTP, FTP, DHCP, NTP



IPC Range

IR Vandal-proof Dome

- Video Compression : H.264
- Highest Resolution : Megapixel (1280*720)
- Image Sensor : 1/3.2"CMOS
- Lens : 4~9mm
- IR Distance : 10~15m
- Sensitivity: 0.1Lux or 0Lux (IR on)
- Protection Rating : IP66
- Storage : Up to 64GB SD Card local storage
- Standard Function: Alarm, Two-way voice intercom, 485controller, Reset
- Optional Function: POE, Wi-Fi,WDR
- Network Protocol: TCP/IP, HTTP, UDP, ARP, SMTP, FTP, DHCP, NTP



IPC Range

Mini Dome

- Video Compression : H.264
- Highest Resolution : Megapixel (1280*720)
- Image Sensor : 1/3.2"CMOS
- Lens : 3.6mm fixed lens
- Sensitivity: 0.1Lux/F1.2
- Storage : Up to 16GB TF Card local storage
- Standard Function: Remote surveillance, TF card storage, Reset
- Optional Function: POE, Wi-Fi, WDR
- Network Protocol: TCP/IP, HTTP, UDP, ARP, SMTP, FTP, DHCP, NTP



IPC Range

Cube

- Video Compression:H.264
- Highest Resolution: Megapixel (1280*720)
- Image Sensor: 1/3.2" CMOS
- Lens:3.6 mm fixed lens
- IR: Embedded Array IR LED
- WDR: >100db
- Sensitivity: 0.05 Lux/F1.2 at mini.
- Storage: Up to 16GB TF card local storage
- Standard Function: Built-in microphone and loudspeaker, two-way voice intercom
- Optional function: POE, Wi-Fi
- Network Protocol: TCP/IP, HTTP, UDP, ARP, SMTP, FTP, DHCP, NTP



ZKiVision Software

Cube

ZKiVision Client Software

Current User: Admin
2012-04-07 18:04:29

ZKTeco

List Group

- 192.168.80.11
- 192.168.80.80
- 192.168.80.82
- Channel 01
- 192.168.80.84
- 192.168.80.85
- Channel 01
- 192.168.80.86
- 192.168.80.87
- 192.168.80.88
- 192.168.80.89
- 192.168.80.90
- 192.168.80.91
- 192.168.80.92

PTZ control

Preset

Cruise

Color adjustment

80

50

0

136

(Hue only for SD)

Default

IP Camera 2012-04-07 18:04:29

IP Camera 2012-04-07 18:04:29

Linkage alarm

IP Camera 2012-04-07 18:04:29

Alarm channel: 192.168.80.82- channel 01

Alarm type:

Alarm time: 2012-04-07 18:04:26

Alarm queue: 1

Next page Cancel

CH 1

IP Camera

CH 3

CH 4

Source	Time	Event
192.168.80.11-80-C2	2012-04-07 18:04:26	Unlock the door Success
192.168.80.82-80-C1	2012-04-07 18:04:26	(Access)Unlock the door
192.168.80.82-80-C1	2012-04-07 18:04:12	Motion detection alarm

ZK iVision 3.0 Software

Features

- Real-time 16 channels monitoring
- 4 channels playback
- Simultaneous recording
- Snap function at main stream
- Electronic map function
- Video Data backup function
- Remote control PTZ
- Preset points, PTZ tours, lens control
- Triggered alarms like motion detection, input alarm, network abruption, local disk error, etc
- Multilevel user management



CMS(central management system) Software

Features

- Large monitoring system
- Thousands of channel video surveillance
- Digital Matrix
- Disk Array & Internet Storage
- Monitoring
- Video playback
- Multi Channel Alarm Management
- Streaming media forwarding functions



Face Identification & Access Control

Features

- ZKIFACE software
- High speed face identification algorithm
- Detecting, capturing
- 8 faces simultaneously per second
- Simple time attendance management
- Access control linkage
- Alarm output
- Electronic map (E-map)



Upcoming Products

					
Series Name	ZKIP4	ZKIR4	ZKSD4	ZKNV100	ZKDVS100
Introduction	Cube IP Camera	Small IR Bullet IP Camera	PTZ IP Camera	NVR	DVS
Sensor	CMOS	CMOS	CMOS	/	/
Resolution	Megapixel	Megapixel	Megapixel	/	/
Channels supported	/	/	/	4 to 8 channels	1 channel
Audio Communication	YES	YES	YES	YES	YES
Alarm	YES	YES	YES	YES	YES
Networking	10/100M	10/100M	10/100M	10/100M	10/100M
USB	N/A	N/A	N/A	N/A	N/A
POE	Optional	Optional	Optional	Optional	/
WIFI	Optional	Optional	Optional	Optional	/

ZKBilock

ZKBioLock—Intelligent Lock

ZK started to manufacture fingerprint locks in 2005. In May 2011, an international brand was created which consists of high-tech consumer products including intelligent door lock, hotel lock, fingerprint door lock, and face recognition lock.

Fingerprint Door Lock

L4000



L5000



- Robust housing made of Zinc alloy
- European standard mortise
- OLED display and USB interface
- Fingerprint, Card, PIN or Key
- 500 templates,
- 100 passwords,
- 100 cards,
- 30 000 Logs

Fingerprint Door Lock

L7000



- Zinc alloy die-casting
- Fingerprint, PIN or Key
- OLED display and USB interface
- 500 templates
- 100 passwords
- 30 000 Logs

BL100



- Rugged Steel Construction
- Illuminated keypad Entry
- Can be opened by Fingerprint, PIN or Key
- 100 User Fingerprint or PIN Capacity
- Low Battery Warning
- Reversible lever for Left or Right Operation
- Easy to Install with No Wiring Required

Upcoming Products

LH4000



- Standalone with Mifare
- U.S. Mortise with 5 latches
- Robust housing made of Zinc alloy
- Hotel management software
- CE, FCC approved
- Low battery voltage warning
- Emergency mechanical key

Facial



- Can be opened by Face, PIN or Key
- High pixel Dual camera
- 3 inches TFT screen
- 100 faces
- 100 passwords
- 200 cards
- 30 000 Logs

Upcoming Products

Bio Safe





Automatic Fingerprint Identification System

What's AFIS?

- AFIS – For integrators who wish to use AFIS for Civil ID and Commercial ID projects
- Provide large-scale fingerprint matching
- Capture the single finger, rolling finger, two-slap finger, four-slap finger
- Provide safer, faster, more accurate and more convenient security services

Why ZKAFIS?

- Advanced proprietary biometric technology
- Dedicated to hardware design for many years
- Experienced to design high quality optical sensor
- Experienced to provide AFIS OEM and ODM service
- Provide independent and professional AFIS SDK

Applications

Voting Stations



Airports & Borders



Health System



Social Benefits



Retail



Banking Industry



THANK YOU

ZKT^o*eco*

ZKSoftware | ZKAccess | ZKiVision | ZKAFIS | ZKBiolock