

Focal point ceiling

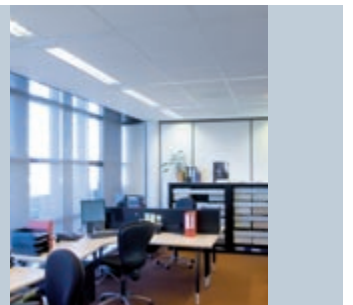
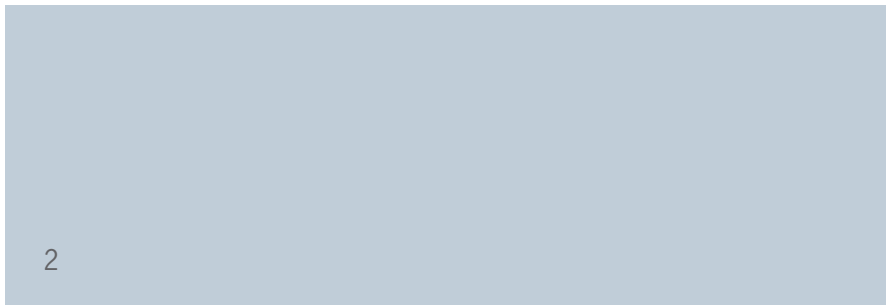
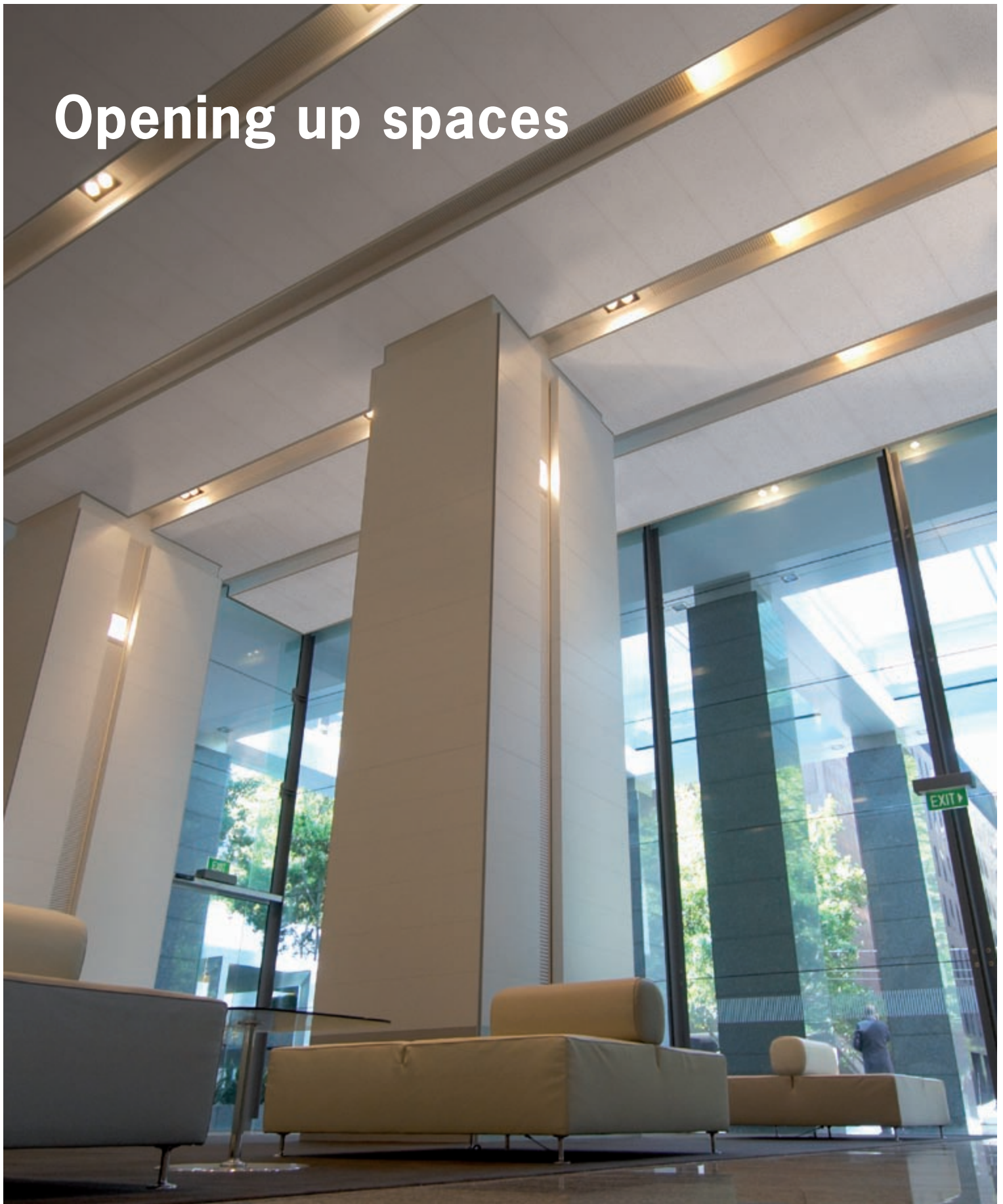
OWA



The Company
Products
Services



Opening up spaces



Shopping, conference and sports centres, office buildings, hotels, restaurants, airports, concert halls, museums, clinics – spaces for all kinds of functions. And also with the widest possible variety of ceiling design requirements.

You see them every day, but you usually don't notice them at first glance. Yet the type of ceiling overhead has a decisive impact on the overall effect of a particular space or room. A well-designed ceiling can open up a room, making it feel larger and more spacious.

Ceilings also play many important functional roles. Sound absorption, lighting, HVAC and fire protection are important elements of any modern ceiling system. OWA has the know-how and the products to fulfil any and all of these requirements.


Why are we qualified? Because of our outstanding personnel, product quality and experience, derived from the thousands of projects we have had the privilege of completing in the course of our 60-year history as a company.

What makes us different? We are a family firm entering its third generation. Accordingly, we are strongly oriented to long-term values. Without compromising the flexibility needed to bring ideas to the market with great speed. For the benefit of our customers around the world.

In this brochure you can find out more about OWA, its products, its people and the values that drive our organisation. If after reading this brochure you look at your ceiling with a new perspective, then we have achieved our goal.

Especially if it happens to be an OWA ceiling.

Thank you very much!



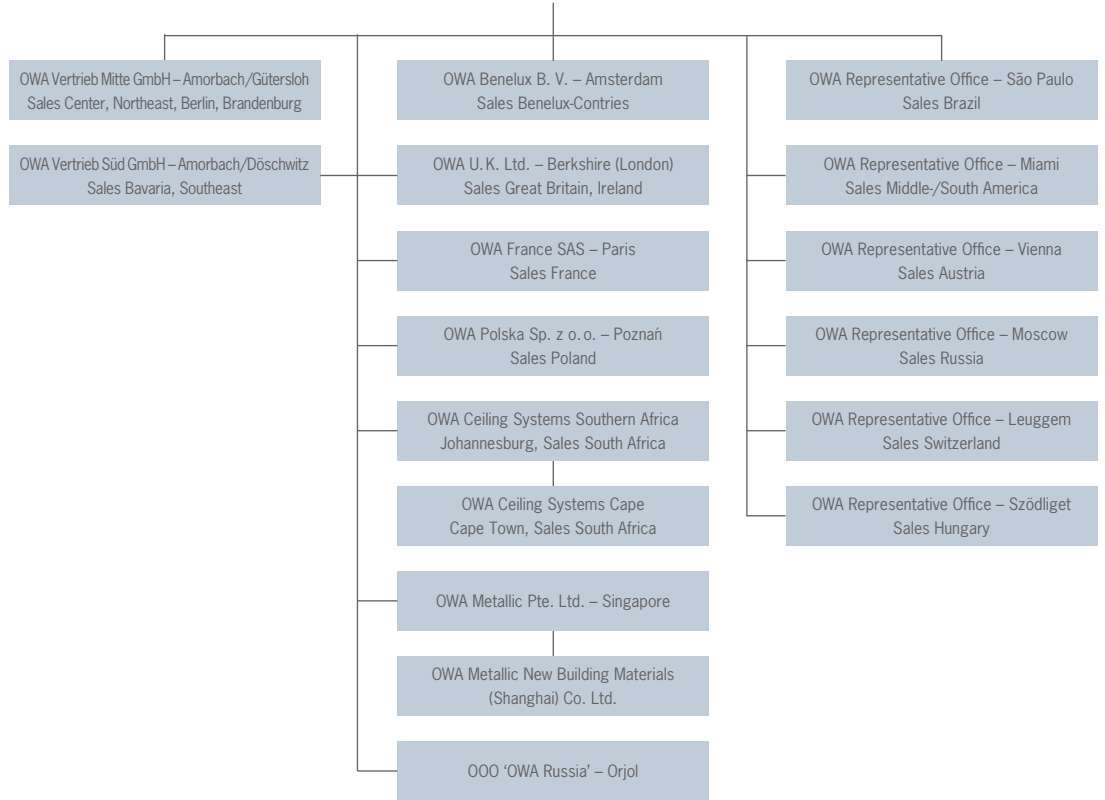
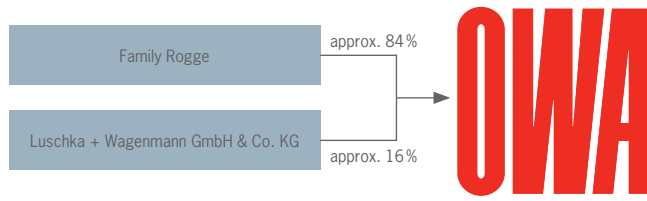
Dirk Rogge,
Managing Director
and shareholder

Mathias Schaper,
Managing Director

Dirk Rogge

Mathias Schaper







WHY WE DEVELOP SOLUTIONS INSTEAD OF PRODUCTS

In classic architecture, ceilings have a creative, ornamental and/or prestige function. Much more is required however for the architecture of our times. Ceilings have to optimise room acoustics. Ceilings have to integrate lighting and air-conditioning elements. Ceilings have to increase fire safety. All that, without allowing function to overshadow design.

Avantgarde in dry construction

OWA saw the coming trend as early as the 60's, when we became a player shaping the market for dry construction and acoustic products. OWA customers loved our (at the time) new lightweight, fire-resistant multi-purpose ceiling panels, which set a new standard for interior finishing.

Closed supply chain

OWA offers complete, technically sophisticated ceiling systems. We supply all the components, which fit together – panels, construction elements, accessories. This makes it easier to select the right system, minimising our customers' logistics.

Acoustic ceilings



Fire protection ceilings



Hygienic ceilings



Ceilings thought through



Installation made easy

Installation benefits: Single source for all components, better planning, high-availability, easy to install, certified safe from A to Z, and dependable service throughout the entire installation process.

Array of system selections

Advantage for planners and architects: Proven turnkey solutions fulfilling your planning specifications. From our attractively priced standard ceiling to high-end acoustical ceilings and clean room ceiling systems meeting the most sophisticated requirements for hygiene and fire safety.

Better fire protection

Unique safety enhancement offered only by OWA: Complete kit systems consisting of OWA ceiling

panels and OWA track constructs offer the most extensive set of fire protection certifications on the market, representing both a milestone and a benchmark in dry construction.

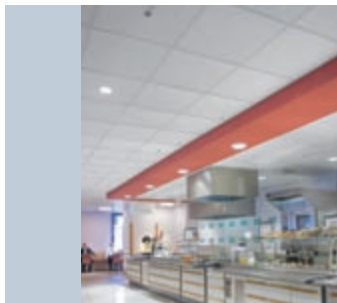
Biological mineral wool – prerequisite for a healthy room environment

The secret to our product quality: biologically absorbable mineral wool. OWA produces this special mixture of sand, recycled glass and limestone itself. The products are tested on an ongoing basis and regularly inspected by an independent institute. Our mineral wool meets all national and international standards, and bears the RAL Seal of Quality.

Clean room ceilings

Integrated air-conditioning elements

Integrated lighting



Extensive assortment



Suspension and installation system OWAconstruct®



THE ADDED VALUE PROVIDED BY OUR ARRAY OF SYSTEMS

One reason for OWA's success is in our comprehensive product portfolio. Benefit for customers: It is extremely easy to identify the optimal solution from a technical, design and budget standpoint, for any conceivable application.

Finding, ordering, installing

The OWA product array offers tremendous variety, despite its basic simplicity and clear structuring.

OWAcoustic® premium is the name of our high-end ceiling panel product line geared towards the most sophisticated design, acoustic and fire protection requirements.

OWAcoustic® smart is the name of our winning product line for standard applications, combining light weight with outstanding fire resistance.

The **OWAdeco®** line is for basic requirements, featuring light weight, attractive looks and very low prices.

The **OWAtecta®** line of metal ceiling panels is a designer's favourite because of the range of design variations offered.

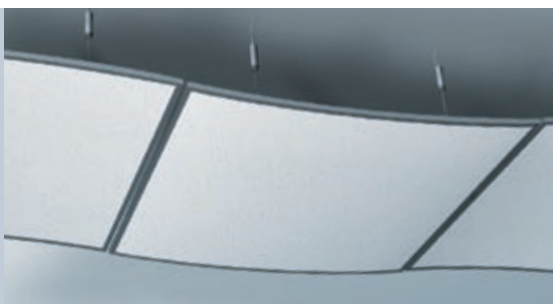
The **OWAspectra®** line offers a spectrum of creative sealing solutions involving new forms, colours, functions and materials.

OWA Functional Ceilings provide maximum functionality for a wide range of applications including in clinics, sound studios and clean rooms.

OWA Wall Absorbers are individually configurable elements with phenomenal acoustic qualities that render room acoustics problems manageable. This solution is also attractive from an optical standpoint.

OWAconstruct® is a 7,000-component suspension installation system providing the ultimate in safety and dependability – certified fire resistant and bearing OWAcoustic® mineral wool panel certification

Ceiling grid system



Wall absorbers





OUR IDENTITY AND MOTIVATION

Odenwald Faserplattenwerk GmbH was founded by Friedrich-Karl Rogge in the town of Amorbach in the year 1948. OWA had grown into a major provider in the wood fibre acoustic and soundproof panel market by 1960, when Friedrich-Karl Rogge discovered a new material in America which had fascinating characteristics: mineral wool. He bought a license, then immediately went on to develop his own mineral wool panels featuring a host of innovations. Courage and a spirit of invention – traits that still characterise the family-run firm OWA today.

The OWAacoustic® brand

Just one year later, things started moving fast: In 1961 OWA became Europe's first supplier of mineral wool panels. OWAacoustic®, the ceiling system brand, was launched, soon to become established worldwide.

Proprietary production techniques

Milestone year 1977: The most modern facility for the production of mineral wool (for its day) began operation. OWA starts using volcanic basalt in production, yielding 'black wool' that was to become the hallmark and key material in OWAacoustic® products for over 20 years.

Friedrich-Karl Rogge



OWA site, 1948



Hot on quality

The natural resource basalt was the key material in OWA mineral wool panels for over 20 years. Until we found something even better...

Basis for healthy building

1997: By switching to 'white wool' OWA aligned itself with the increasing market sensitivity towards ecological issues. 'White wool' is made of a natural mixture of sand, recycled glass and limestone. Because of its excellent biological absorptivity, this new mineral wool complies with all German and European regulations/standards for health and safety. Products are constantly checked and production closely monitored, in addition to inspections conducted by independent institutes.

Global ambitions

2008: It all got started with 60 employees, but today OWA is one of the region's largest employers with a workforce of 450. Our ambitions extend far beyond our region however, and even beyond Germany's borders. Distribution subsidiaries throughout the world accommodate rising demand for quality OWA ceilings. Together with a partner we have established production of construct elements in China.

OWA site, 2006



Ceiling Headquarters





Productive energy

White hot ducts:
Making mineral wool at the
speed of sound



Mineral wool:
Base product for proven
panel quality

TURNING IDEAS INTO CEILINGS

Mineral wool -- a seemingly simple product. But to manufacture it, especially in OWA quality, takes specialised know-how and lots of experience.

Hot and fast

The raw materials used in our mineral wool are melted together in a large vat at a temperature of 1,300°C. The resulting 'lava' is then turned into fibres of white wool in a special sonic-speed process – the base material in quality OWA panels.

Ideas and recipes

We then blend perlite, an igneous rock, into the mineral wool, which we are able to expand to 20 times its original volume at our plant, saving transportation and energy costs. The ingredients are stirred together with water and starch as a binding agent and shaped into raw panels on highly advanced Fourdrinier machines, then dried and prepared for further processing. And by the way: The process water used is filtered and re-used in a closed cycle.

High-end quality

In the final production phase the panels are cut with millimetre precision before fine working of the edges for absolute fit and subconstruct stability. Panel services are smoothed, receive several coats of finish and then are given the desired surface design.

Uniquely OWA

Being a flexible, family-owned, medium sized enterprise run by engineers and inventors is beneficial for production. We develop all of our primary systems – ovens, processing equipment, Fourdrinier machines, dryers and production finishing lines – in-house, and optimise these on an ongoing basis. No other manufacturer has comparable production experience or expertise, which is why our product quality is so hard to imitate.



Raw panel drying



A finished raw panel exits the dryer

7th-floor innovation



Ceiling Headquarters
Our administrative and
development centre in
Amorbach



Auralisation:
The computer simulates the
acoustic features of different
spaces in order to model
sound.

HOW WE DO R&D

Top floor of corporate headquarters: usually the preserve of executive management. Not at OWA. The top floor of the OWA building, whose glass panelling mirrors the surrounding Odenwald landscape, is dedicated to our most important stakeholder – the customer! At OWA, ‘floor seven’ is the home of Research and Development, which we conduct in close cooperation with designers, architects, planners and installers.

Top-floor ideas

Welcome to the 7th floor! Here is where we test out the latest developments like ‘sound walls’ featuring hidden loudspeakers entirely plastered over, sound-insulated call-centre workstations, full-sized acoustic panel testing studios and ceiling constructs offering innovative functionalities. Here at this light-flooded and lofty perch looking out over the stately expanse of our Odenwald facilities we get our customers involved in research and development.

Feedback requested

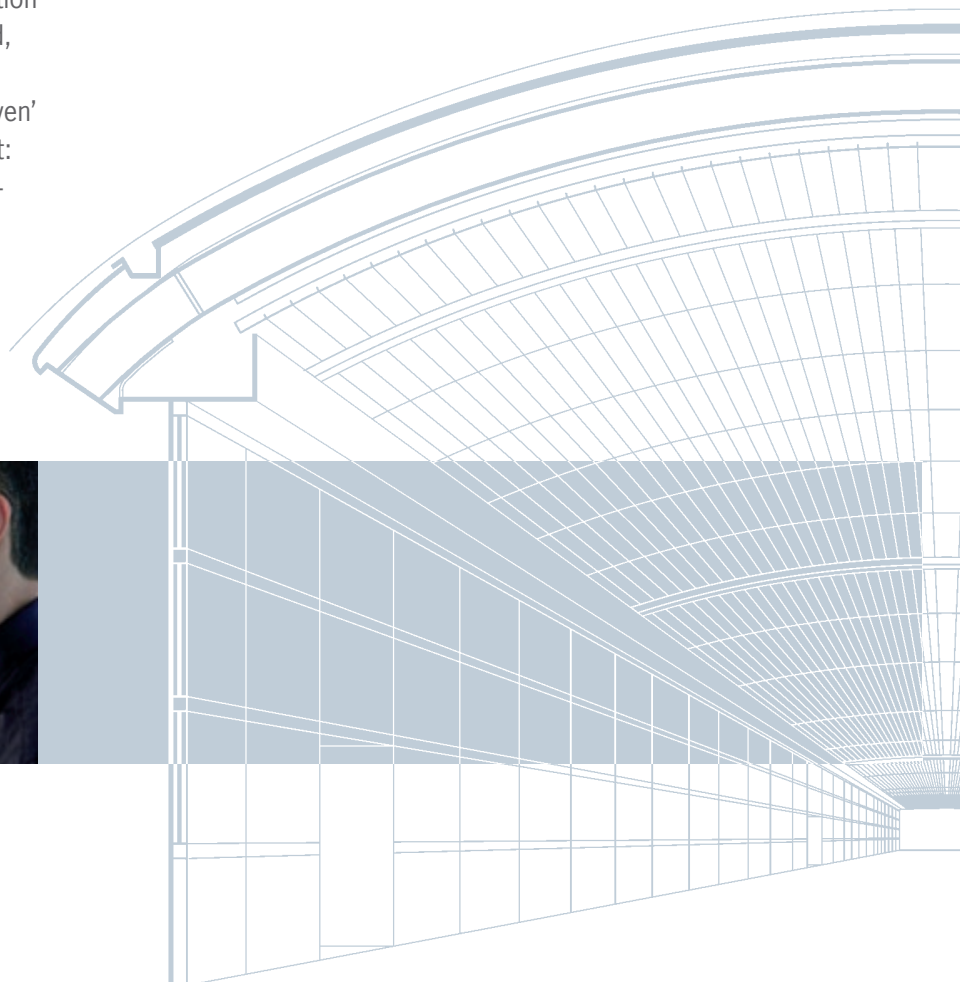
A bar named ‘Etagé 7’ facilitates communication following an interesting presentation. Relaxed, yet focused and productive – feedback and criticism welcomed and requested. ‘Floor seven’ is all about openness in every respect. Result: Shorter time-to-market for products and services meeting our customers’ exact needs.

OWA annual acoustics workshop

Once a year we hold an OWA acoustics workshop entitled Klang Klausur, which is highly regarded in the industry. Architects and interior designers come to Amorbach to share ideas and attend presentations on acoustical, medical, film, design and construction applications. The workshop features a robust programme of cultural, musical and culinary events.



Acoustics ‘close enough to touch’ – OWA wall absorbers





Guiding values

Rivium Crystal Building, Capelle A. D. Ijssel



THE ROLE OF DISTRIBUTION

South-western Germany is known for technological innovation and is home to a number of highly successful SMEs with international operations. OWA is one of them. We have succeeded in transferring our core commitments to innovation and to the customer to our international business. Vibrant relationships and business contacts are a natural result.

Close to the customer

For us, sales are about more than big volume. It is also about serving the customer, wherever he or she may be located in the world. From our main plant in Amorbach we supply our distribution partners, most of whom maintain their own warehouses. Systems and accessories are put together in Amorbach on an order basis and rapidly, economically and reliably delivered. OWA has an extensive advisor network in place throughout Germany, able to assist anyone in need of advice on ceiling systems, including developers, officials, architects, installers and building materials dealers.

Global objectives

Exports account for over half of our revenues, and are set to increase further. Rising demand has not caught us unprepared. As far back as the 60s we began building up a network of distribution subsidiaries and independent dealers, which now encompasses over 60 countries. In many countries we have subsidiaries with their own sales force to ensure optimal customer contact. These include: OWA UK, OWA France, OWA Benelux, OWA Poland, OWA Southern Africa and OWA China. And, like most happy families, sometimes there is a new member.



Stade de France, Paris



Tamara Bank, Indonesia



LEADING BY EXAMPLE

Architecture is making exciting and fascinating advances around the world, pushing forward with greater expectations and simply making pretty buildings. Bold designs are being realised within the framework of radical new ecological criteria. OWA ceilings are playing any key role in this trend because of our outstanding product quality.

Central Plaza, Hong Kong



Airport Centre, Frankfurt



Eldorado Business Tower, São Paulo



Discoveries



LEED-ership

OWA ceiling systems do not pose any health problems, are lightweight, easy to work with and are produced in accordance with strict environmental standards. OWA thus meets the stringent standards of the LEED programme (Leadership in Energy and Environmental Design). This environmental certification programme for office and residential buildings, initiated in 2000 by the US Green Building Council is gaining increasing significance among investors and architects outside the US as well, and is on its way to becoming a

global standard for environmentally-compatible building construction.

Raising the bar

In the course of our 60-year company history we have completed thousands of projects around the world. Many of these have been architecturally significant, such as the Frankfurt Airport Centre and the Hong Kong Central Plaza – projects that prove our stature and motivate us to continue to grow internationally.

Zurich Toren, Den Haag

Rank Xerox, Neuss

Oval Tower, Amsterdam





Sustainable progress



WHAT GROWTH MEANS TO US

As a family firm, OWA is free of pressures to generate short-term shareholder value. And yet we continue to grow internationally at a substantial pace. This confirms for us that we are on track for realising our long-term business objectives. Our interest is in sustainable growth, rather than growth at any cost. For true progress, serving mankind and the envi-

Quality management

There is always room to do everything just a little better. In keeping with this motto, we have implemented a quality management system integrating environmental, quality and workplace safety elements. These systems are DIN EN ISO 9001 (quality) and DIN EN ISO 14001 (environment) certified.

Protecting the environment

We feel that we have a responsibility to employ non-polluting production and work techniques, on both a large and small scale. Our new, cutting-edge heat recovery system for example has afforded a 20% reduction in energy consumption. The quality of our finished products also reflects sustainability-oriented development practices. OWA products can be used for a long time, and at the end of their life cycle can be fully recycled.

Our staff

We want to generate interest, develop talent and both promote and reward achievement. We offer secure jobs in the local area where our employees live. Despite global competition, we have avoided shifting production to cheaper locations. Instead we focus our attention on enhancing efficiency at our existing locations. We actively support and promote quality education and training, job security, fair remuneration and substantial benefits. The skills, motivation and dedication of our staff members make them real assets to our organisation. The average length of service at OWA is 18 years, which is unusually long for a medium-sized company. We are very proud of this record.



Control: Acoustical production on-screen



Final inspection: Every panel is checked



Focal point ceiling

The Company
Products
Services



OWA

Odenwald Faserplattenwerk GmbH

Dr.-F.-A.-Freundt-Straße 3

63916 Amorbach

Tel. +49 9373 2 01-0

Fax +49 9373 2 01-1 30

www.owa.de · E-Mail: info@owa.de