

Hendrico Feeders ⁽¹⁾

[Home \(/\)](#) [Products \(/products.html\)](#) [Product Features \(/product-features.html\)](#)

[Contact Us \(/contact-us.html\)](#)



01 Dog + Chicken Feeders:

"Click on Photos to see enlarged image"

Prices on request. Discount on large quantities.

Dog Feeder - Small (also used for Cats and Poultry)



[\(/uploads/1/6/0/1/16011240/55644_orig.jpg\)](#)

Size: 27cm High

Description: This small dog feeder is also used for cats and poultry. The design prohibits them from scratching the food out of the bowl. This feeder has a chute inside to direct the food to the front and therefore none of the food will be left behind to go stale in time and make your dog, cat or poultry sick.

Dog Feeder - Medium



[\(/uploads/1/6/0/1/16011240/9217759_orig.jpg\)](#)

Size: 35cm High

Description: This feeder has a chute inside to direct the food to the front and therefore none of the food will be left behind to go stale in time and make your dog sick.

Dog Feeder - Large



Size: 45cm High

Description: This feeder has a chute inside to direct the food to the front and therefore none of the food will be left behind to go stale in time and make your dog sick.

Chicken Feeders - Small, Medium and Large



Size: Small 10cm

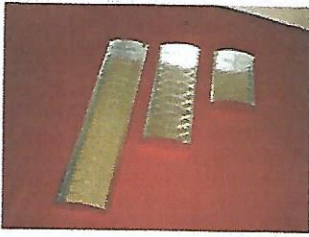
Size: Medium 20cm

Size: Large 30cm

Description:

[\(/uploads/1/6/0/1/16011240/5122314_orig.jpg\)](#)

Quale Feeding Tray

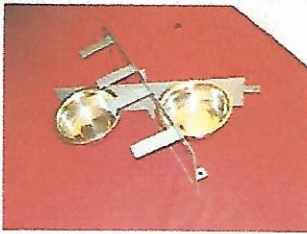


Size: Small 10cm

Size: Medium 20cm

Size: Large 30cm

Description: Our quale feeder trays are slightly lower in height than our the chicken feeding trays as quale are smaller in size.



and that is why we powder coat them to prevent rust and the bowls are stainless steel.

[\(/uploads/1/6/0/1/16011240/3196053_orig.jpg\)](#)

Swivel Feeders - Large 3 Bowl



Size: 3 x 14cm Bowls.

Description: Our swivel feeders are used outside in the open and that is why we powder coat them to prevent rust and the bowls are stainless steel.

[\(/uploads/1/6/0/1/16011240/5304566_orig.jpg\)](#)

Swivel Feeders - Large 3 Bowl (Front)

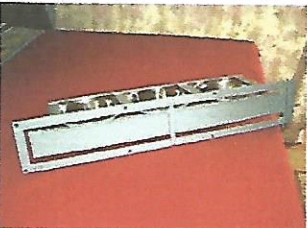


Size: 3 x 16cm Bowls.

Description: Our swivel feeders are used outside in the open and that is why we powder coat them to prevent rust and the bowls are stainless steel.

[\(/uploads/1/6/0/1/16011240/3808956_orig.jpg\)](#)

Swivel Feeders - Large 3 Bowl (Back - Note the Hinge and Lock)



Size: 3 x 16cm Bowls.

Description: Our swivel feeders are used outside in the open and that is why we powder coat them to prevent rust and the bowls are stainless steel.

[\(/uploads/1/6/0/1/16011240/8488070_orig.jpg\)](#)

Swivel Feeders - large 3 Bowl (Opened)



Size: 3 x 16cm Bowls.

Description: Our swivel feeders are used outside in the open and that is why we powder coat them to prevent rust and the bowls are stainless steel.

[\(/uploads/1/6/0/1/16011240/2297720_orig.jpg\)](#)

Flip Open Feeder - Medium



Size: 1 x 14cm Bowl

Description: Our swivel feeders are used outside in the open and that is why we powder coat them to prevent rust and the bowls are stainless steel.

[\(/uploads/1/6/0/1/16011240/4250493_orig.jpg\)](#)

Hendrico Feeders ⁽¹⁾

[Home \(/\)](#) [Products \(/products.html\)](#) [Product Features \(/product-features.html\)](#)

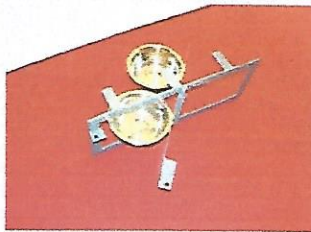
[Contact Us \(/contact-us.html\)](#)

02 Swivel + Flip Open Feeders:

"Click on Photos to see enlarged image"

Prices on request. Discount on large quantities.

Swivel Feeders - Medium 2 Bowl



[\(/uploads/1/6/0/1/16011240/7181583_orig.jpg\)](#)

Size: 2 x 11cm Bowls.

Description: Our swivel feeders are used outside in the open and that is why we powder coat them to prevent rust and the bowls are stainless steel.

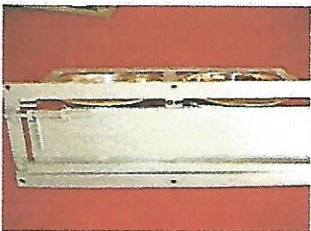
Swivel Feeder - Large 2 Bowl (Front)



Size: 2 x 16cm Bowls.

Description: Our swivel feeders are used outside in the open and that is why we powder coat them to prevent rust and the bowls are stainless steel.

swivel Feeder - Large 2 Bowl (Back with Hinge and Lock Handle)



Size: 2 x 16cm Bowls.

Description: Our swivel feeders are used outside in the open and that is why we powder coat them to prevent rust and the bowls are stainless steel.

Swivel Feeders - Medium 3 Bowl



[\(/uploads/1/6/0/1/16011240/895889_orig.jpg\)](#)

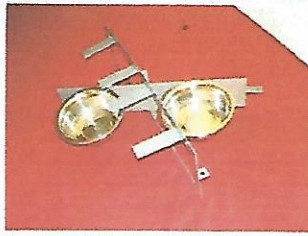
Size: 3 x 11cm Bowls.

Description: Our swivel feeders are used outside in the open and that is why we powder coat them to prevent rust and the bowls are stainless steel.

Swivel Feeders - Large 2 Bowl

Size: 2 x 14cm Bowls.

Description: Our swivel feeders are used outside in the open



[\(/uploads/1/6/0/1/16011240/3196053_orig.jpg\)](#)

and that is why we powder coat them to prevent rust and the bowls are stainless steel.

Swivel Feeders - Large 3 Bowl



[\(/uploads/1/6/0/1/16011240/5304566_orig.jpg\)](#)

Size: 3 x 14cm Bowls.

Description: Our swivel feeders are used outside in the open and that is why we powder coat them to prevent rust and the bowls are stainless steel.

Swivel Feeders - Large 3 Bowl (Front)

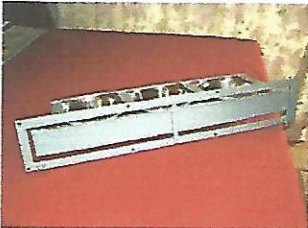


[\(/uploads/1/6/0/1/16011240/3808956_orig.jpg\)](#)

Size: 3 x 16cm Bowls.

Description: Our swivel feeders are used outside in the open and that is why we powder coat them to prevent rust and the bowls are stainless steel.

Swivel Feeders - Large 3 Bowl (Back - Note the Hinge and Lock)



[\(/uploads/1/6/0/1/16011240/8488070_orig.jpg\)](#)

Size: 3 x 16cm Bowls.

Description: Our swivel feeders are used outside in the open and that is why we powder coat them to prevent rust and the bowls are stainless steel.

Swivel Feeders - large 3 Bowl (Opened)

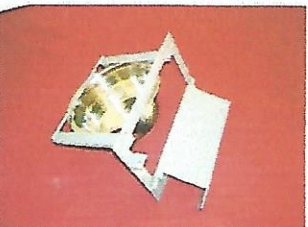


[\(/uploads/1/6/0/1/16011240/2297720_orig.jpg\)](#)

Size: 3 x 16cm Bowls.

Description: Our swivel feeders are used outside in the open and that is why we powder coat them to prevent rust and the bowls are stainless steel.

Flip Open Feeder - Medium



[\(/uploads/1/6/0/1/16011240/4250493_orig.jpg\)](#)

Size: 1 x 14cm Bowl

Description: Our swivel feeders are used outside in the open and that is why we powder coat them to prevent rust and the bowls are stainless steel.

Flip Open Feeder - Large



Size: 1 x 16cm Bowl

Description: Our swivel feeders are used outside in the open and that is why we powder coat them to prevent rust and the bowls are stainless steel.

[\(/uploads/1/6/0/1/16011240/5827214_orig.jpg\)](#)

Flip Open Feeder - Extra Large

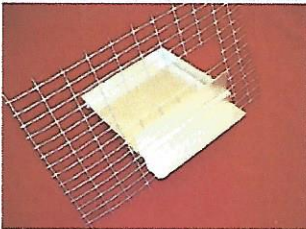


Size: 1 x 21cm Bowl

Description: Our swivel feeders are used outside in the open and that is why we powder coat them to prevent rust and the bowls are stainless steel.

[\(/uploads/1/6/0/1/16011240/6324358_orig.jpg\)](#)

Soft Food Pan for Aviaries



Size: 2cm High x 14cm Wide x 14cm Long

Description: This small pan is used for extra feeding in parrot cages with Aviplus food or for an extra snack to feed to parrots. Can be made in different sizes and heights according to your needs and can be powder coated for an extra cost of R10.

[\(/uploads/1/6/0/1/16011240/6317472_orig.jpg\)](#)

Rabbit Cage



Size: 50cm High x 50cm Wide x 1200cm Long

Description: The rabbit cage can be used for all small animals like dogs that are on heat or even for that difficult poultry cock etc.

[\(/uploads/1/6/0/1/16011240/1275201_orig.jpg\)](#)

Hendrico Feeders ⁽¹⁾

[Home \(/\)](#) [Products \(/products.html\)](#) [Product Features \(/product-features.html\)](#)

[Contact Us \(/contact-us.html\)](#)

03 Bird Feeders:

"Click on Photos to see enlarged image"

Prices on request. Discount on large quantities.

Canary Feeder with Wire Guard

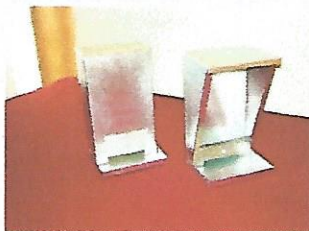


[\(/uploads/1/6/0/1/16011240/7251516_orig.jpg\)](#)

Size: 15cm High x 11cm Wide

Description: This feeder can be used for small breeding cages and fits through any small gate. It can hook inside aviaries on the mesh at the perch.

Bird Feeder - Small (Forward and Reverse)

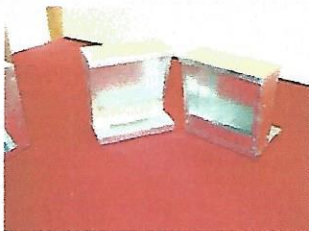


[\(/uploads/1/6/0/1/16011240/5259642_orig.jpg\)](#)

Size: 20.5cm High x 11cm Wide

Description: Available in forward and reverse configuration.

Bird Feeder - Medium (Forward and Reverse)

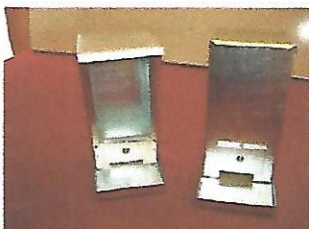


[\(/uploads/1/6/0/1/16011240/6837181_orig.jpg\)](#)

Size: 20.5cm High x 19cm Wide

Description: Available in forward and reverse configuration.

Bird Feeder - Long Medium (Forward and Reverse)



[\(/uploads/1/6/0/1/16011240/413889_orig.jpg\)](#)

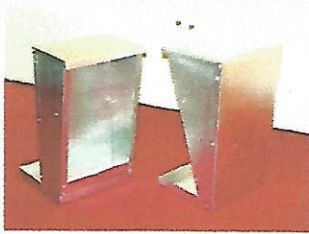
Size: 25.5cm High x 12cm Wide

Description: Available in forward and reverse configuration.

Bird Feeder - Large (Forward and Reverse)

Size: 30.5cm High x 17cm Wide

Description: Available in forward and reverse configuration.



[\(/uploads/1/6/0/1/16011240/2576088_orig.jpg\)](#)

Bird Feeder - Extra Large (Forward and Reverse)

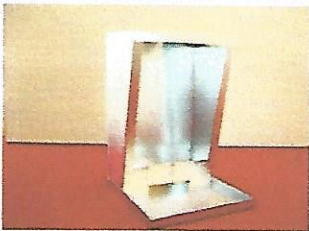


[\(/uploads/1/6/0/1/16011240/6810513_orig.jpg\)](#)

Size: 35.5cm Height x 23cm Wide

Description: Available in forward and reverse configuration.

Forward Feeder is put inside Aviary



[\(/uploads/1/6/0/1/16011240/5864390_orig.jpg\)](#)

Size: 35.5cm Height x 23cm Wide

Description: Available in forward and reverse configuration.

Parrot Feeder - Large (Reversed)

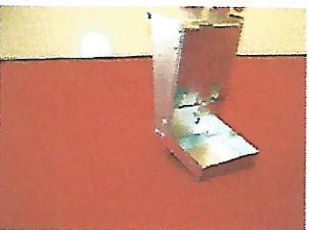


[\(/uploads/1/6/0/1/16011240/6702416_orig.jpg\)](#)

Size: 18.5cm High x 9cm Wide

Description: The large parrot feeder is designed to replace the plastic bowls in parrot cages. It can store food for a week and the parrot cant scratch the food out of the feeder because off the wire guard over the feeding tray.

Parrot Feeder - Small (With Adjustable Slide)



[\(/uploads/1/6/0/1/16011240/8928405_orig.jpg\)](#)

Size: 15cm High x 8cm Wide

Description: The small parrot feeder is designed to replace the plastic bowls in parrot cages. It can store food for a week and the parrot cant scratch the food out of the feeder because off the wire guard over the feeding tray.

Hendrico Feeders ⁽¹⁾

[Home \(1\)](#) [Products \(/products.html\)](#) [Product Features \(/product-features.html\)](#)

[Contact Us \(/contact-us.html\)](#)

04 Specialized Feeders:

"Click on Photos to see enlarged image"

Prices on request. Discount on large quantities.

Canary Feeder with Wire Guard

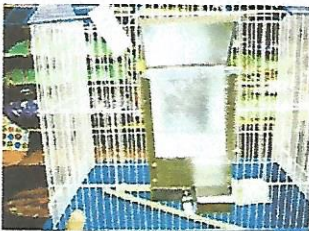


[\(/uploads/1/6/0/1/16011240/8899297_orig.jpg\)](#)

Size: 15cm High x 11cm Wide

Description: This feeder can be used for small breeding cages and fits through any small gate, can hook it inside aviaries on the mesh at the perch.

Exceder Feeder



[\(/uploads/1/6/0/1/16011240/7590538_orig.jpg\)](#)

Size: 18.5cm High x 11cm Wide

Description: Special design for small bird cages as shown in the picture for small show budgies and small cages for canaries. Has a loose pan separate pan on the side for the breeders to feed aviplus food and other special feeds. It fits right into the only gate and hooks on there permanently.

Parrot Feeder - Large (Reversed)



[\(/uploads/1/6/0/1/16011240/6270406_orig.jpg\)](#)

Size: 18.5cm High x 11cm Wide

Description: Fits into the parrot cages and replaces the plastic bowls that are easily disposed of by parrots. It also has a lip that can be adjusted for the different feed sizes.

Parrot Feeder - Medium (Reversed)



[\(/uploads/1/6/0/1/16011240/4108154_orig.jpg\)](#)

Size: 18.5cm High x 9.5cm Wide

Description: The medium parrot feeder is designed to replace the plastic bowls in parrot cages. It can store food for a week and the parrot cant scratch the food out of the feeder because off the wire guard over the feeding tray.

Parrot Feeder - Small (Reversed)

Size: 15cm High x 8cm Wide

Description: The small parrot feeder is designed to replace the



plastic bowls in parrot cages. It can store food for a week and the parrot cant scratch the food out of the feeder because off the wire guard over the feeding tray.

[\(uploads/1/6/0/1/16011240/7693781_orig.jpg\)](#)

Parrot Restaurant - Small (Front View)

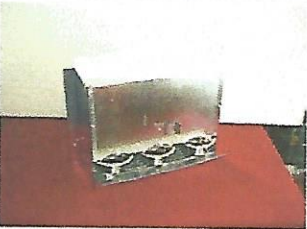


Size: 29cm High x 35cm Wide x 12cm Deep

Description: This is a smaller version of our parrot restaurant and is typically used by bird breeders in small spaces under the roof of parrot cages.

[\(uploads/1/6/0/1/16011240/9187401_orig.jpg\)](#)

Parrot Restaurant - Small (Rear View)



Size: 29cm High x 35cm Wide x 12cm Deep

Description: Here we can see the rear view of the small parrot restaurant where you can see the small stainless steel bowls and the pan for catching the waste.

[\(uploads/1/6/0/1/16011240/3702133_orig.jpg\)](#)

Parrot Restaurant - Large (Rear)



Size: 29cm High x 35cm Wide x 12cm Deep

Description: Here we can see the beautiful photo of the parrot restaurant with self feeder and 2 bowls.

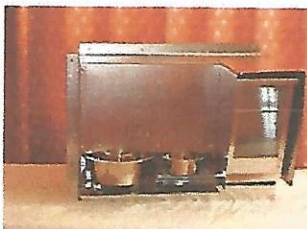
Parrot Restaurant - Large (Front)



Size: 29cm High x 35cm Wide x 12cm Deep

Description: Parrot Restaurant with 3 x 16 cm bowls

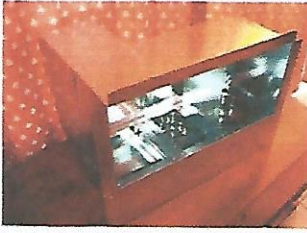
Parrot Restaurant - Large (Self Feeder)



Size: 29cm High x 35cm Wide x 12cm Deep

Description: Parrot restaurant with the self feeder and 1 x 11cm bowl and 1 x 16cm bowl.

Parrot Restaurant - Large



Size: 29cm High x 35cm Wide x 12cm Deep

Description: The parrot restaurant with the 3 bowls.

Double Breeder Exceder Feeder



Size: 18.5cm High x 11cm Wide

Description: Designed to help the show budgie and canary breeders. Due to the cages being very small and having only one gate its very difficult to feed the canaries some Aviplus food and other soft foods and seeds. The double breeder exceder feeder makes this possible and the loose soft food pan can be pulled out without opening the gate. The loose pan is also powder coated to prevent rust.

[\(uploads/1/6/0/1/16011240/6794680_orig.jpg\)](#)

Hendrico Feeders ⁽¹⁾

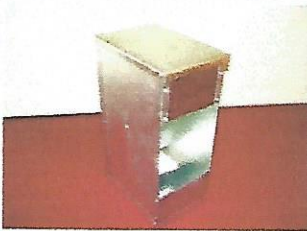
[Home \(/\)](#) [Products \(/products.html\)](#) [Product Features \(/product-features.html\)](#)

[Contact Us \(/contact-us.html\)](#)

05 Rabbit Feeders:

"Click on Photos to see enlarged image"
Prices on request. Discount on large quantities.

Rabbit Feeder



[\(/uploads/1/6/0/1/16011240/4051586_orig.jpg\)](#)

Size: 33cm High x 12.5cm Wide

Description: This rabbit feeder has a chute to feed the pellets straight to the front and is just big enough for the rabbit to fit his head inside. There is no waisting of pellets due to rabbits scratching and laying inside the food pans.

Rabbit Cage

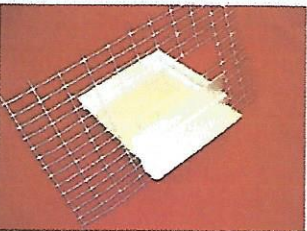


[\(/uploads/1/6/0/1/16011240/4667574_orig.jpg\)](#)

Size: 50cm High x 50cm Wide x 1200cm Long

Description: The rabbit cage can be used for all small animals like dogs that are on heat or even for that difficult poultry cock etc.

Soft Food Pan

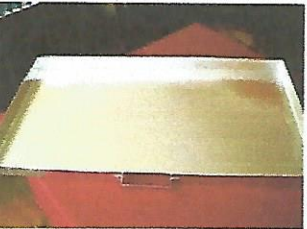


[\(/uploads/1/6/0/1/16011240/5580436_orig.jpg\)](#)

Size: 2cm High x 14cm Wide x 14cm Long

Description: This loose pans can be powder coated and is used for parrot breeders anywhere in the cage and comes in different sizes.

Loose Pans



[\(/uploads/1/6/0/1/16011240/4103885_orig.jpg\)](#)

Size: 5cm High x 89cm Wide x 57cm Long

Description: Loose pans of any size for cages can be created on request.

Parrot Restaurant

Hendrico Feeders ⁽¹⁾

[Home \(1\)](#) [Products \(/products.html\)](#) [Product Features \(/product-features.html\)](#)

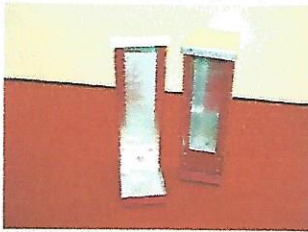
[Contact Us \(/contact-us.html\)](#)

06 New Release Feeders:

"Click on Photos to see enlarged image"

Prices on request. Discount on large quantities

Bird Feeder - Tall and Slender (Forward and Reverse)

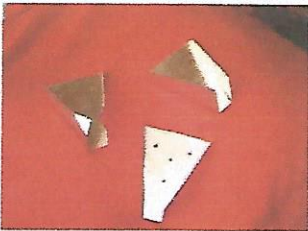


[\(/uploads/1/6/0/1/16011240/8456597_orig.jpg\)](#)

Size: 25.5cm High x 7.5cm Wide

Description: Available in forward and reverse configuration. Use it with the swivel feeders for sunflower seeds.

Perch Holders



[\(/uploads/1/6/0/1/16011240/2477334_orig.jpg\)](#)

Size: 9cm high x 10cm Wide

Description: Perch holders are designed with holes so that you can tie them to the welded mesh with wire.

Small Parrot Restaurant



[\(/uploads/1/6/0/1/16011240/5297367_orig.jpg\)](#)

Size: 29cm High x 35cm Wide x 12cm Deep

Description: This is a smaller version of our parrot restaurant and is typically used by bird breeders in small spaces under the roof of parrot cages.

Hendrico Feeders ⁽¹⁾

[Home \(/\)](#) [Products \(/products.html\)](#) [Product Features \(/product-features.html\)](#)

[Contact Us \(/contact-us.html\)](#)

Some of our Product Special Features

"Here you will find a more detailed explanation of the special features of just some of our bulk ordered products."

Chicken Feeders



Our chicken Feeders are designed with a smooth wire guard that prohibits the chickens from hurting themselves. All our chicken feeders are designed to accommodate a need in the pet trade.

Dog Feeders



Our dog feeders have a slide inside that feeds the food immediately to the front of the bowl. This saves on food costs as no food slays behind or rots getting stuck in the corners. You simply throw new food in when the feeders is empty. We also

use grade A materials which will last for many years.

Parrot Reversed Feeder



Our parrot reversed feeder replaces the plastic bowls in the parrot cage. Many bird lovers will tell you that parrots chew up their plastic bowls so badly within the first week that they have to be thrown away. Our parrot reversed feeder uses

durable steel bowls that also hold more food and can last up to a week or two before it is empty where the plastic bowls can only hold food for one day. Most parrots scratch their food out of the bowl the moment you fill it up. Our bird feeders prevent seeds being wasted by having a lip in front that stops seeds from falling out. You simply adjust the height of the lip according to the seed size that you are using.

Canary Feeder



Canary seed is very expensive and the canaries scratch the food out of the bucket with there beaks. So we have designed our canary feeder with a wire guard over the bucket that means the canaries can eat all the seeds without

scratching them out and wasting the food.

Parrot Restaurant



Our parrot restaurant is a feeder that is very specially designed for the serious parrot breeder.

Swivel Feeders



We powder coat all of our swivel feeders to make them long lasting and durable because we know that they are open and exposed to the elements of nature. Weathering in the sun and the rain can cause them to rust.