

TESTIMONIALS

"My horse was examined and they found a bulging disc in his back where the IR image showed a hot spot from saddle pressure"

Mike Moore

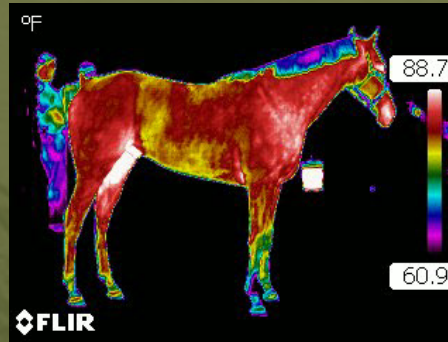
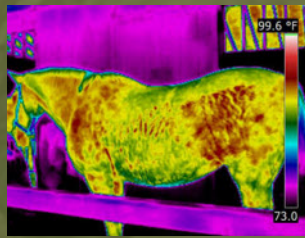
BEFORE SCAN:

"I am interested in having a scan of my horse that has been having leg issues for 5 months. After spending R 3700.00 on diagnostics we still have no answer as to where the problem is. I was told not to spend any more money and get another horse or get a IR scan. Currently she can't do anything other than walk. She is my baby and I am devastated. I believe that an Infrared scan will show the leg problem.

Mandy Vaal."

"I received the reports and they are awesome! Thank you so much. It is very interesting to read and it makes so much sense to me. Now my trainer and I are taking the next steps in helping Spotted Wonder"

Shaan-Rae Pienaar



PO Box 640 Amanzimtoti, Durban, 4125

Tel: 031 903 5048

Cell: 079 313 7306

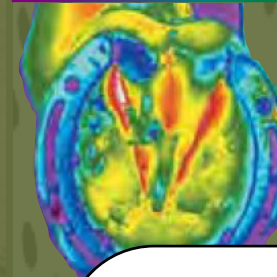
Email : infrared@irtc.co.za

Web site: www.irtc.co.za

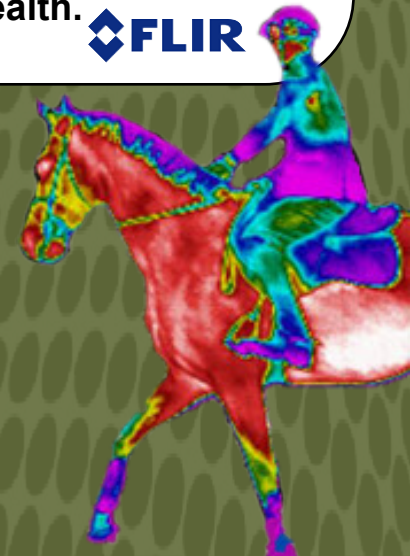
At
your
service!



Equine Infrared Imaging

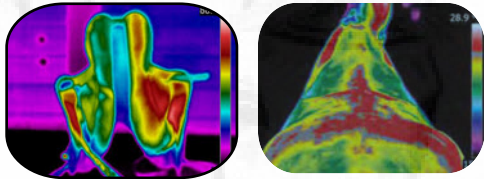


Whether you are buying, selling or just looking for a routine infrared scan of your horse, IRTC Infrared Scan can prove invaluable to your finances and the horse's health.



SADDLE FIT

A horse's saddle should fit correctly and have even bearing on the horse's back. A thermal review of the horse and the saddle can show when pressure points are unevenly distributed, therefore causing discomfort to the horse and rider.



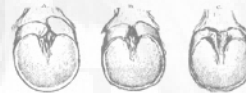
BENEFITS

- Non-Invasive and completely safe (*No harmful radiation*)
- About 15-20 minutes for a full horse scan
- Scans are done at your location, you won't have to trailer
- Costs start at about R 850.00* for a scan, multi-horse and ongoing imaging programs are available
- **Travel fee may apply, submit your request via our web site for complete pricing in your area.*

www.irtc.co.za

Before Equine Thermography, veterinarians could only locate a problem with observation or palpation but with equine thermography, an abnormality can show tissue that's stressed before the affected tissue becomes damaged. Since animals cannot speak, it has been difficult for caretakers to truly identify hidden or masked conditions. Now with infrared thermal imaging, many of these physiological and anatomical issues are exposed at a much earlier stage. Early detection = early prevention.

- PRE-PURCHASE IMAGING
- HOOF BALANCE IMAGING
- TRACK FOOTING IMAGING
- PRE-RACE IMAGING
- SADDLE FIT IMAGING
- JOINT INFLAMMATION IMAGING



Anatomical imaging, such as x-ray, lacks specificity and fails in the ability to see soft tissue conditions.

Physiological imaging, such as infrared imaging has the ability to not only see tissue conditions but can also recognize areas that are indicative to anatomical issues.



We **detect**
and **document**
Anomalies

In Horses
with infrared
thermography

