

### GD2.5

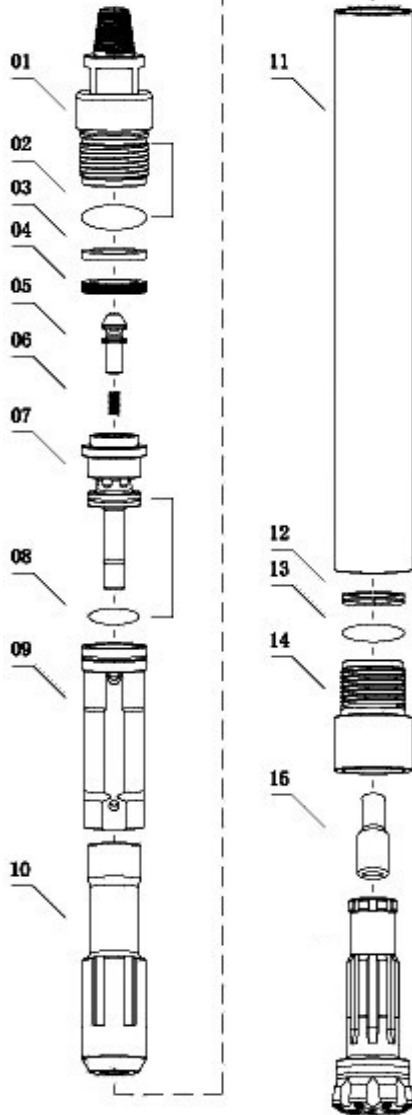


**Configuration:**

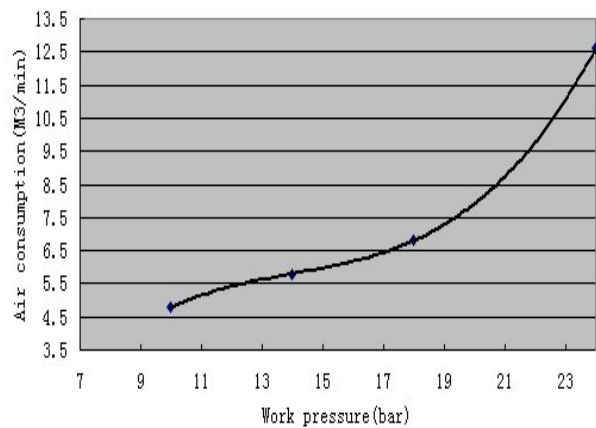
Hammer length without bits: 874mm  
 Thread: F42x10x2  
 Outer diameter: 70mm  
 Wrench Flat: 55mm  
 Weight (kg): 19kg

**Technical Specifications:**

Working pressure (Bar): 10 18 24  
 Air consumption (M<sup>3</sup>/min): 4.8 6.8 12.6  
 Working pressure: 10~24 bar  
 Shank style: GD2.5



Replacement Parts	Weight(kg)	Part No.
01 Top sub: API 2 3/8REG	3.1	GD2.5-01
02 O-Ring	0.01	Ø50×3.1
03 Steel washer	0.07	GD2.5-06
04 Rubber washer	0.02	GD2.5-07
05 Check Valve Dart Spring	0.09	GD2.5-03
06 Spring	0.003	GD2.5-04
07 Rigid Valves	0.9	GD2.5-09
08 O-Ring	0.01	Ø40×3.1
09 Internal Cylinder	1.2	GD2.5-10
10 Piston	4.2	GD2.5-11
11 Piston Case	7.1	GD2.5-12
12 Bit Retainer Ring	0.09	GD2.5-16
13 Rubber O-Ring	0.01	δ=1 t=2
14 Drive sub	1.6	GD2.5-17
15 Foot valve	0.03	WG42-C4



### GD3.5

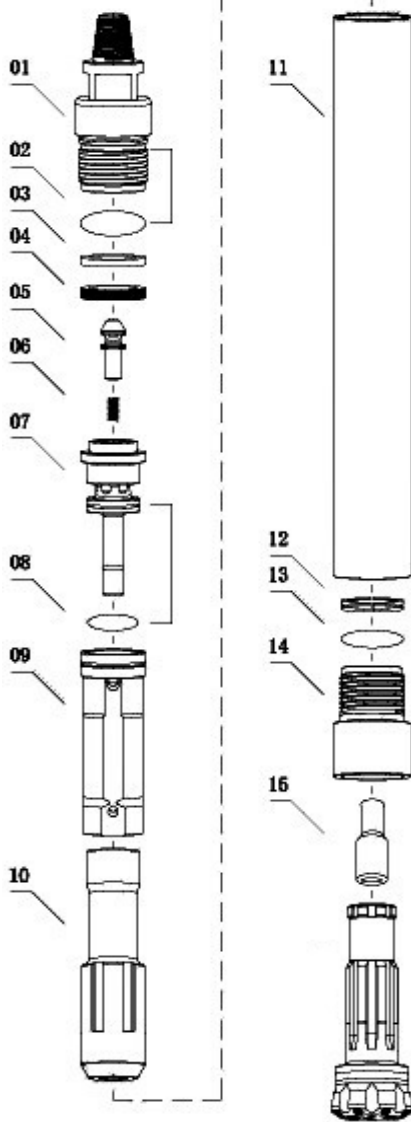


**Configuration:**

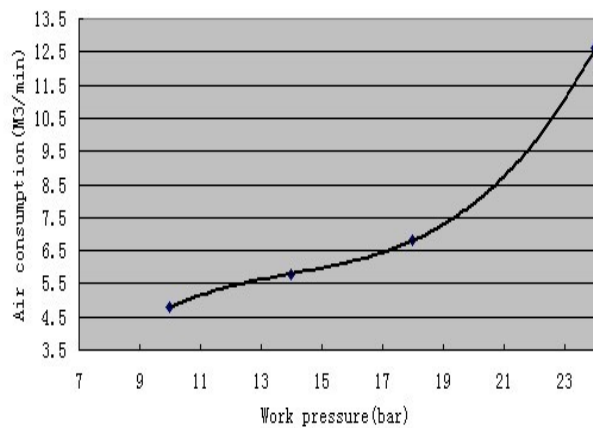
Hammer length without bits: 978mm  
 Thread: API 2.3/8" REG  
 Outer diameter: 80mm  
 Wrench Flat: 60mm  
 Weight (kg): 25.5kg

**Technical Specifications:**

Working pressure (Bar): 10 18 24  
 Air consumption (M<sup>3</sup>/min): 4.8 6.8 12.6  
 Working pressure: 10~24 bar  
 Shank style: DHD3.5



Replacement Parts	Weight(kg)	Part No.
01 Top sub: API 2 3/8REG	4.8	GD3.5-01
02 O-Ring	0.01	Ø60×3.1
03 Steel washer	0.13	GD3.5-06
04 Rubber washer	0.02	GD3.5-07
05 Check Valve Dart Spring	0.10	GD3.5-03
06 Spring	0.01	GD3.5-04
07 Rigid Valves	1.7	GD3.5-09
08 O-Ring	0.02	Ø45×3.1
09 Internal Cylinder	1.6	GD3.5-10
10 Piston	5.1	GD3.5-11
11 Piston Case	10.0	GD3.5-12
12 Bit Retainer Ring	0.14	GD3.5-16
13 Rubber O-Ring	0.01	δ=1 t=2
14 Drive sub	1.7	GD3.5-17
15 Foot valve	0.04	WG42-C35



### GD340

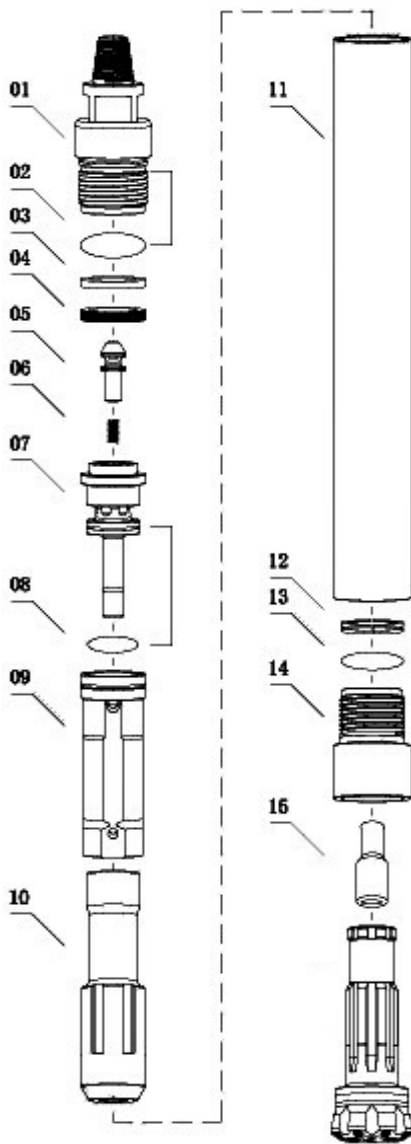


**Configuration:**

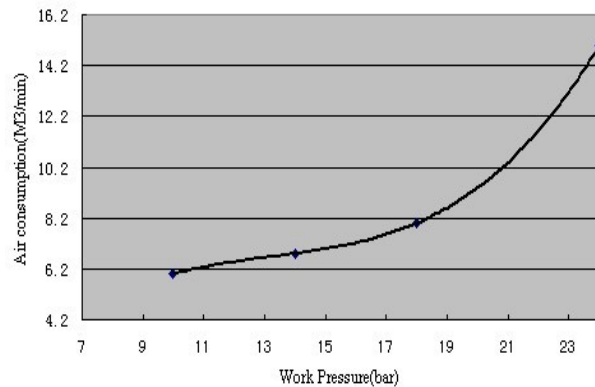
Hammer length without bits: 978mm  
 Thread: API 2.3/8" REG  
 Outer diameter: 99mm  
 Wrench Flat: 74mm  
 Weight (kg): 44kg

**Technical Specifications:**

Working pressure (Bar): 10 18 24  
 Air consumption (M<sup>3</sup>/min): 6 8 15  
 Working pressure: 10~24 bar  
 Shank style: DHD340



Replacement Parts	Weight(kg)	Part No.
01 Top sub: API 2 3/8REG	7.0	GD340-01
02 O-Ring	0.01	Ø80×3.1
03 Steel washer	0.35	GD340-06
04 Rubber washer	0.05	GD340-07
05 Check Valve Dart Spring	0.3	GD340-03
06 Spring	0.05	GD340-04
07 Rigid Valves	2.4	GD340-09
08 O-Ring	0.01	Ø60×3.1
09 Internal Cylinder	2.5	GD340-10
10 Piston	9.4	GD340-11
11 Piston Case	17.1	GD340-12
12 Bit Retainer Ring	0.34	GD340-16
13 Rubber O-Ring	0.01	δ=1 t=2
14 Drive sub	4.0	GD2.5-17
15 Foot valve	0.04	WG42-C4



### GD350

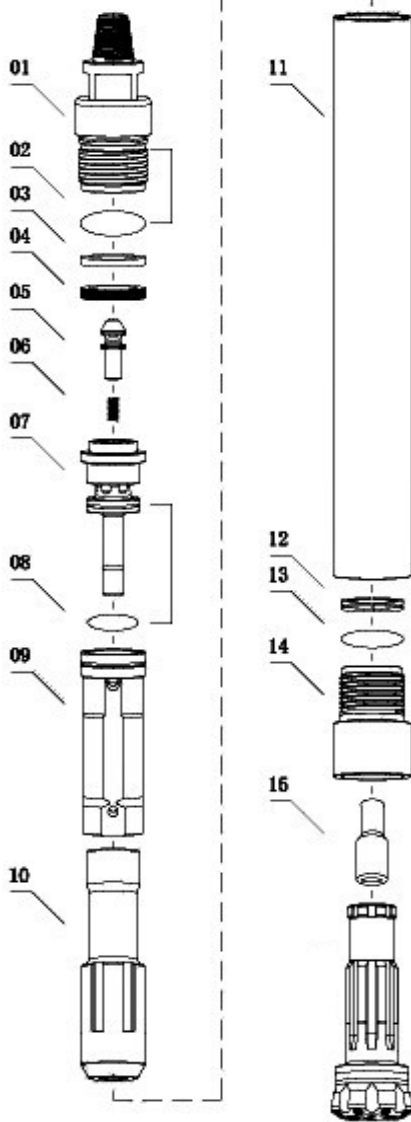


**Configuration:**

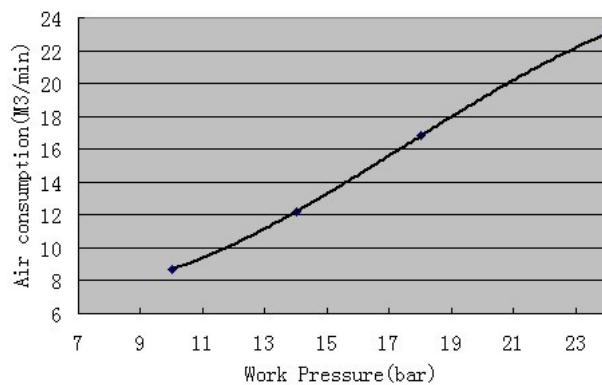
Hammer length without bits: 1119mm  
 Thread: API REG 2.3/8", 2.7/8", 3.1/2"  
 Outer diameter: 124mm  
 Wrench Flat: 74mm, 95mm  
 Weight (kg): 71kg

**Technical Specifications:**

Working pressure (Bar): 10 18 24  
 Air consumption (M<sup>3</sup>/min): 8.7 16.8 23  
 Working pressure: 10~24 bar  
 Shank style: DHD350



Replacement Parts	Weight(kg)	Part No.	
01 Top sub	API 2 3/8REG	12.6	GD350-01
	API 2 7/8REG	12.7	GD350-01A
	API 3 1/2REG	12.8	GD350-01B
02 O-Ring	0.01	Ø105×3.1	
03 Steel washer	0.35	GD350-06	
04 Rubber washer	0.08	GD350-07	
05 Check Valve Dart Spring	0.30	GD350-03	
06 Spring	0.05	GD350-04	
07 Rigid Valves	4.46	GD350-09	
08 O-Ring	0.01	Ø80×3.1	
09 Internal Cylinder	4.12	GD350-10	
10 Piston	15.7	GD350-11	
11 Piston Case	26.3	GD350-12	
12 Bit Retainer Ring	0.34	GD350-16	
13 Rubber O-Ring	0.01	Ø90×3.1	
14 Drive sub	6.9	GD350-17	
15 Foot valve	0.05	WG42-C5	



### GD360

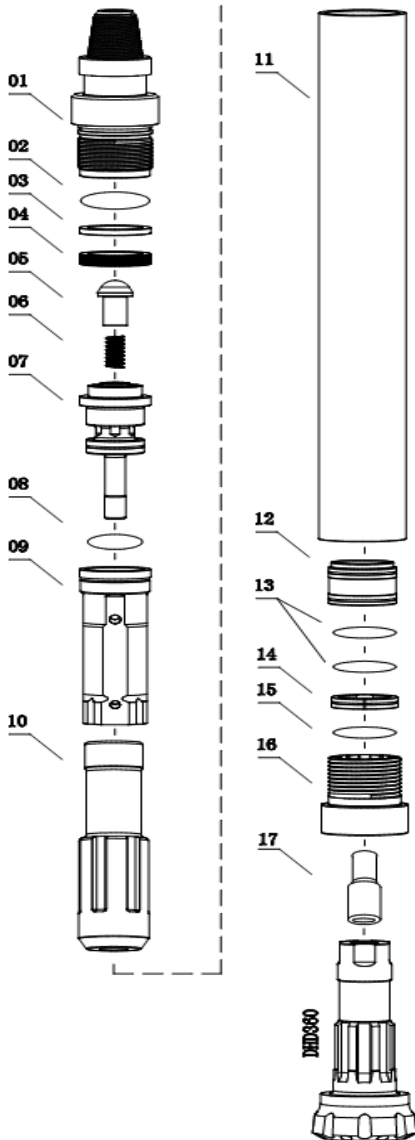


**Configuration:**

Hammer length without bits: 1277mm  
 Thread: API 3.1/2" REG  
 Outer diameter: 140mm  
 Wrench Flat: 95mm  
 Weight (kg): 107 kg

**Technical Specifications:**

Working pressure (Bar): 10 18 24  
 Air consumption (M<sup>3</sup>/min): 10.5 20 27  
 Working pressure: 10~24 bar  
 Shank style: DHD360



Replacement Parts	Weight(kg)	Part No.
01 Top sub: API 3 1/2REG	19.8	GD360-01
02 O-Ring	0.01	Ø110×3.1
03 Steel washer	0.42	GD360-06
04 Rubber washer	0.08	GD360-07
05 Check Valve Dart Spring	0.30	GD360-03
06 Spring	0.05	GD360-04
07 Rigid Valves	6.2	GD360-09
08 O-Ring	0.01	Ø80×3.1
09 Internal Cylinder	5.3	GD360-10
10 Piston	22.3	GD360-11
11 Piston Case	44.8	GD360-12
12 Guide sleeve	1.8	GD360-14
13 O-Ring	0.01	Ø100×3.1
14 Bit Retainer Ring	0.65	GD360-16
15 O-Ring	0.01	Ø105×3.1
16 Driver Sub	6.2	GD360-17
17 Foot Valve	0.07	WG42-C6

