



InfraRed Thermal

Consultance



Why use thermal imaging

No more guess work

Why use Infrared Thermography on Roofs ?

Infrared imaging is a proven method for identifying and defining moisture problems in your roof. This will enable you to develop a more sophisticated roof asset management program, make more informed decisions regarding roof budgets and will help you plan repairs. By using infrared thermography, we find the trapped moisture and mark the wet areas on the roof with marking paint, so that roof repairs can be made surgically - without the tremendous expense of replacing the entire roof. This can save you a tremendous amount of money!

Saves time and money

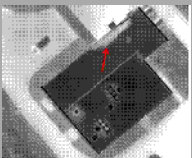
GUARANTEED

What Can Moisture Infrared Thermography Do For You?

Thermo moisture detection can save you money, time and headaches.

- It is an affordable way to detect and locate moisture problems.
- It saves you money because it can pinpoint problem areas enabling you to repair only the areas that need repairing.
- It provides immediate results and can survey large areas in a very short time.
- It is a comprehensive, non-contact, non-destructive investigative tool that eliminates the need to tear down walls hunting for damage.
- The clear and concise report you will receive is easy-to-understand and can serve as irrefutable proof of moisture damage in court.

aerial surveys also available



You can't afford not to

GUARANTEED

Can you afford not to check your Electrical **NO**

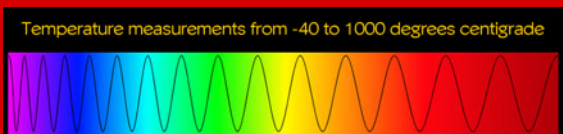
With infrared thermography technology, potentially dangerous heat that normally can't be seen is easily identified. By far, the most popular and widely used application of infrared thermography is electrical switchgear testing. No other commercial application has achieved the level of interest than that of electrical infrared thermography. Daily, the electrical switchgear in thousands of buildings are checked by certified thermographers all over the country. Electrical Infrared is now an integral part of any facility manager's preventative/predictive maintenance (P/PM) program.

Electrical Infrared Basics

Infrared technology is used to perform P/PM inspections on electrical equipment because excess resistance on electrical apparatus indicates electrical faults such as loose connections, overloaded or imbalanced circuits, faulty breakers, damaged switches, faulty fuses and a wide range of other unwanted electrical conditions. Before an electrical component burns up, it heats up. Thermography is used to see the excess heat (resistance) so that problems can be found and maintenance personnel can act to correct the problem before the component fails, causing damage to the component, safety hazards and/or production downtime.

Saves time, money and lives

GUARANTEED



Thermal imaging shows

There is nothing that
Can't be checked
GUARANTEED

How it works

An infrared camera can see and measure heat differences in buildings, electricals, mechanicals. Wet or moist, Hot or cold, objects will have a different temperature in areas where heating or cooling, increases conductance or thermal capacitance. Accordingly, the areas will appear relatively darker or lighter on an infrared picture enabling us to locate problems.

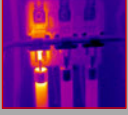
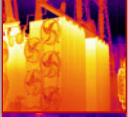
**Join now and
Get your base line
scan at 20%
discount**

** Terms and
conditions
apply*



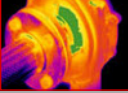
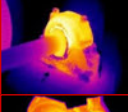
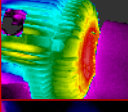
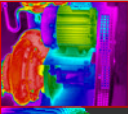
national service

what the human eye can't



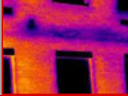
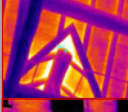
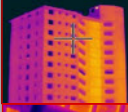
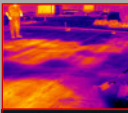
ELECTRICAL SURVEYS

- Utility substations, transformers and feed poles
- Main incoming services, plant main knives, capacitor banks, etc
- Main switchboards and disconnects
- Main distribution panels and main disconnects
- Uninterruptible power supplies
- Generator controls and transfer switches
- Main I-Line panels
- Lighting and receptacle panels
- Disconnects and combination starters
- Service disconnects for motors
- Machine control panels



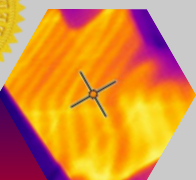
MECHANICAL SURVEYS

- Utility substations, transformers and feed poles
- Main incoming services, plant main knives, capacitor banks, etc
- Main switchboards and disconnects
- Main distribution panels and main disconnects
- Uninterruptible power supplies
- Generator controls and transfer switches
- Main I-Line panels
- Lighting and receptacle panels
- Disconnects and combination starters
- Service disconnects for motors



CONSTRUCTION SURVEYS

- Utility substations, transformers and feed poles
- Main incoming services, plant main knives, capacitor banks, etc
- Main switchboards and disconnects
- Main distribution panels and main disconnects
- Uninterruptible power supplies
- Generator controls and transfer switches
- Main I-Line panels
- Lighting and receptacle panels
- Disconnects and combination starters
- Service disconnects for motors



IRTC

predictive maintenance

InfraRed Thermal Consultance

PO Box 640
Amanzimtoti
4125
Kwazulu Natal
South Africa

Tel: +27 31 903 5048
Fax: 08666 99427
Mobile: 079 313 7306

Email: thys@irtc.co.za
Web: www.irtc.co.za

