



ENVIROSPHERE

*Environmental Consulting
Town Planning*

COMPANY PROFILE

Contact Details:

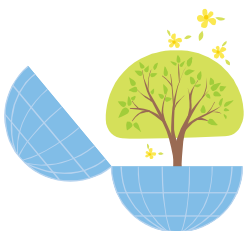
TEL: 011 867 4324

CELL: 072 782 5454

FAX: 086 543 3546

EMAIL: marinda@envirosphere.co.za

www.envirosphere.co.za



Working Together With Our Clients to Save the Environment

BACKGROUND

ENVIROSPHERE WAS ESTABLISHED IN 2010, TO PROVIDE A BROAD RANGE OF ENVIRONMENTAL CONSULTING SERVICES TO THE PRIVATE AND PUBLIC SECTOR.

COMPLIMENTARY TO THE ENVIRONMENTAL SERVICES ON OFFER, ENVIROSPHERE OFFERS TOWN AND REGIONAL PLANNING SERVICES, OUR TOWN AND REGIONAL PLANNING SPECIALISTS HAVE OVER 20 YEARS EXPERIENCE IN THE FIELD.

LOCATION AND SERVICE AREAS

ENVIROSPHERE IS BASED IN THE ALBERTON, (MEYERSDAL) AREA JUST SOUTH OF JOHANNESBURG, GAUTENG, SOUTH AFRICA.

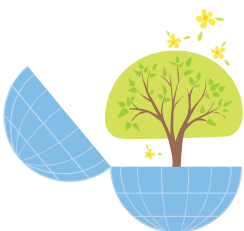
OUR PRIMARY GEOGRAPHICAL FOCUS AREAS ARE GAUTENG, NORTH WEST, FREE STATE, AND MPUMALANGA. WE ARE HOWEVER WILLING TO EXTEND OUR SERVICES TO ANYWHERE IN SOUTH AFRICA.

PROJECTS OUTSIDE OF SOUTH AFRICA WILL BE CONSIDERED ON A CASE BY CASE BASIS.

MISSION STATEMENT

ENVIROSPHERE AIMS TO PROVIDE PROFESSIONAL ENVIRONMENTAL CONSULTING SERVICES IN THE SOUTHERN AFRICAN REGION, IN ORDER TO CONTRIBUTE TO THE BROAD GOAL OF SUSTAINABLE DEVELOPMENT.

ENVIROSPHERE ENCOURAGES SUSTAINABLE DEVELOPMENT WHICH ENABLES DEVELOPMENT TO BE SOCIALLY, ECOLOGICALLY AND ECONOMICALLY SUSTAINABLE.



Working Together With Our Clients to Save the Environment

OWNERSHIP

ENVIROSPHERE IS A 100% WOMAN OWNED BUSINESS.

OWNER: MARINDA WILLIAMS- BSC (HONS) ENVIRONMENTAL MANAGEMENT

MARINDA WILLIAMS HAS PROVIDED CONSULTING SERVICES IN A RANGE OF PROJECT CATEGORIES INCLUDING AMONG OTHERS THOSE LISTED UNDER PROJECTS BELOW:

PROJECTS

ENVIROSPHERE HAS CONSULTED ON A MULTITUDE OF ENVIRONMENTAL AND TOWN PLANNING PROJECTS. THIS PAGE HIGHLIGHTS JUST A FEW SUCH PROJECTS.

GENERAL:

RIVER AND WETLAND MANAGEMENT AND IMPROVEMENT; GENERAL INDUSTRIES; TOURISM AND RESORT DEVELOPMENTS; ECOLOGICAL STUDIES; OFFICE PARK DEVELOPMENTS; GUEST LODGE'S; WEDDING VENUES; WAREHOUSING PROJECTS; FOOD PROCESSING PLANTS; PLATINUM SMELTER; MAGNESIUM SMELTER; PARK CLOSURE FOR RESIDENTIAL DEVELOPMENT; TIMESHARE RESORT DEVELOPMENT; AND MORE!

*EXAMPLES OF PAST PROJECTS CAN BE FOUND ON OUR WEBSITE AT
WWW.ENVIROSPHERE.CO.ZA*



SERVICES

ENVIROSPHERE OFFERS A VARIETY OF SERVICES:

❖ ENVIRONMENTAL AUTHORIZATIONS:

WHEN PROPOSING A NEW DEVELOPMENT OR TRANSFORMATION OF AN EXISTING DEVELOPMENT, IT IS NECESSARY TO DETERMINE WHETHER THE ACTIVITY REQUIRES AUTHORIZATION IN TERMS OF ENVIRONMENTAL LEGISLATION.

OUR SERVICE OFFERING INCLUDES DRAFTING APPLICATIONS AND OBTAINING THE REQUIRED AUTHORIZATIONS FOR:

- *BASIC ASSESSMENT REPORTS (BAR)*
- *SCOPING REPORTS*
- *ENVIRONMENTAL IMPACT ASSESSMENT (EIA)*
- *ENVIRONMENTAL MANAGEMENT PLAN (EMP)*
- *EXEMPTION APPLICATIONS (NEMA QUERIES)*
- *RECTIFICATIONS (S24G)*
- *PLANT ECOLOGICAL/ VEGETATION SURVEYS*
- *AQUATIC SURVEYS*
- *GAME FARM MANAGEMENT PLANS*
- *ECOLOGICAL MANAGEMENT PLANS*
- *AQUATIC MONITORING*
- *OBJECTIONS AGAINST PROPOSED DEVELOPMENTS*

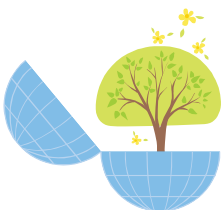
❖ ENVIRONMENTAL AUDITING:

AUDITING IS THE ONSITE PROCESS OF EVALUATING COMPLIANCE AND EFFECTIVENESS OF THE ENVIRONMENTAL MANAGEMENT PLAN (EMP) AND THE RECORD OF DECISION (ROD) OF A SPECIFIC PROJECT.

AN EMP IDENTIFIES POSSIBLE ENVIRONMENTAL IMPACTS THAT A DEVELOPMENT CAN HAVE ON THE ENVIRONMENT AS WELL AS MEASURES TO REDUCE OR MITIGATE THE IMPACT OR TO AVOID IT ALL TOGETHER.

AFTER AUDITING AN AUDIT REPORT IS DRAFTED AND ALL THE NON-COMPLIANCES ARE LISTED AND REPORTED TO THE RELEVANT AUTHORITY. OUR ENVIRONMENTAL AUDITING SERVICES INCLUDE:

- *EMP AUDITING AND AUDIT REPORT*
- *COMPLIANCE TO ROD MONITORING*



Working Together With Our Clients to Save the Environment

TOWN PLANNING SERVICES

WITH A FRESH, COMPREHENSIVE CLIENT FOCUSED APPROACH TO PLANNING AND DEVELOPMENT, AND A SOUND UNDERSTANDING OF THE CITY/TOWN/COUNTRY'S PLANNING SYSTEM, POLICIES & TOWN PLANNING ACTS, WE ARE COMMITTED TO ENSURING POSITIVE OUTCOMES ON PLANNING APPLICATIONS AND DEVELOPMENT PROPOSALS, BY ACTING AS BRIDGE BETWEEN INTERESTED PARTIES AND LOCAL AUTHORITIES, PLANNING AUTHORITIES AND INTERNAL & EXTERNAL PARTIES.

OUR TOWN PLANNING SPECIALISTS HAVE OVER 20 YEARS OF EXPERIENCE AS A TOWN AND REGIONAL PLANNERS AND HAVE A THOROUGH UNDERSTANDING OF ALL TOWN-PLANNING PROCEDURES. SPECIALIZED SERVICES INCLUDE SUBMISSION APPLICATIONS TO LOCAL AUTHORITIES FOR:

- *REZONING*
- *SIMULTANEOUS REMOVAL OF RESTRICTIVE CONDITIONS AND REZONING*
- *REMOVAL OF RESTRICTIVE CONDITIONS*
- *SUB-DIVISION AND CONSOLIDATION*
- *TOWNSHIP ESTABLISHMENT*
- *SPECIAL CONSENT*
- *WRITTEN CONSENT APPLICATION*
- *OCCUPATION FROM HOME*
- *RELAXATION OF BUILDING LINES*

AND OTHER TOWN-PLANNING APPLICATIONS.

