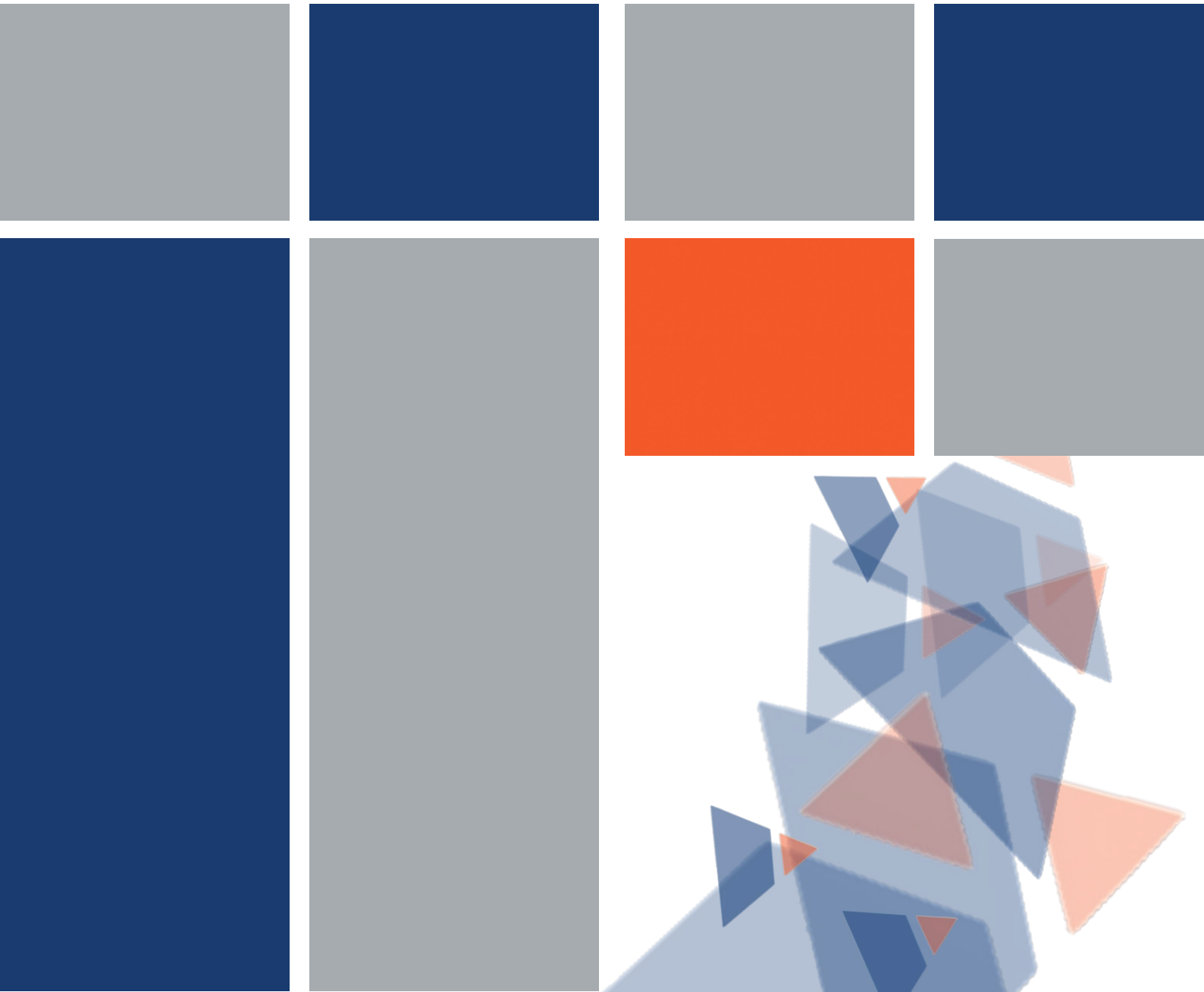




Instrumentation

BBBEE Level 2
CIDB Rating: 4ME/4EP

Business
Profile



Contact Details

Office:

Tel: 016 933 2226

Fax: 016 9332228

Email:

admin@vaal-tech.co.za

finance@vaal-tech.co.za

Contact Persons:

Abel van Biljon

Melanè Engelbrecht

Almer van Biljon

Riaan Klopper

Address:

c/o Cartwright & Petter

Street Antonio Building

CE 6

VanderBijlpark

Gauteng

South Africa

GPS Co-ordinates:

S 26° 42.048

E 027° 50.982

Contents

1

Introduction
Mission & Vision

2

Company Policy
Employment Equity Statement

3

Organogram

4

Distribution

5

Distribution Continued

6

Distribution Continued

7

Supply Product Listing



Introduction

Vaal-Tech Instrumentation, located in Vanderbijlpark, has been serving local municipalities, the steel industry, petrochemical sector and mining industry with their industrial instrumentation needs since 1999. We offer a comprehensive range of instrumentation equipment through our appointed agencies and distributor agreements, along with full technical support and sustainable technological solutions.

In addition to our marketing division, Vaal-Tech Instrumentation has its own team of qualified construction- and maintenance personnel. This allows us to provide the technical expertise and capacity to supply, install, set up and commission instrumentation equipment and turnkey projects according to our clients' requirements.

Vaal-Tech Instrumentation is registered with the Construction Industry Development Board (CIDB) and the National Register of Contractors and Projects.

We have received the following accredited gradings:

CIDB Grading 4ME – Instrumentation and Mechanical Engineering Projects
CIDB Grading 4EP – Electrical Engineering Projects

Our extensive experience in the steel industry, process automation and control instrumentation encompasses both projects and maintenance. Additionally, we have a wealth of experience in fresh water and wastewater processes and associated instrumentation projects and maintenance.

Our specialist capabilities include:

Level measurement, Pump control functionality, Open channel flow measurement, Wireless telemetry communication and Dissolved oxygen control (specifically in the wastewater industry)

Moreover, Vaal-Tech Instrumentation possesses two portable, non-invasive ultrasonic clamp-on flow meter units. These flow meter units assist our clients with flow surveys, flow verification, line leak detection, pump efficiency assessments and blockage tests.

Mission

Vaal-Tech Instrumentation is committed to fostering balanced and sustainable economic growth, while empowering the South African population. By adhering to our sound business principles, we aim to promote the economic prosperity of all citizens.

Vision

Vaal-Tech Instrumentation aspires to be a leading force in delivering commercially sustainable and technological solutions within the Industrial Process Instrumentation sector. We are committed to innovation that benefits our clients and customers.

Company Policy

Vaal-Tech Instrumentation, a Broad-Based Black Economic Empowerment (B-BBEE) level 2 contributing company with an Instrumentation CIDB Rating of 4 ME and an Electrical CIDB Rating of 4 EP, is dedicated to meeting the needs of our clients by supplying high-quality products, systems and specialised services on time. This is made possible through the wealth of knowledge, experience and technology available to us from both our local staff and our principals.

Our goal is to satisfy our customers' requirements through long-term relationships and ethical business conduct. We provide tailored services to meet our clients' specific environments and needs, ensuring professional service at every step.

Founded in Vanderbijlpark in 1999, Vaal-Tech Instrumentation specializes in the industrial instrumentation and process automation industry, providing turnkey solutions to our customers along with 24-hour support and standby service.

Vaal-Tech Instrumentation is a dynamic company with several areas of operation, which include:

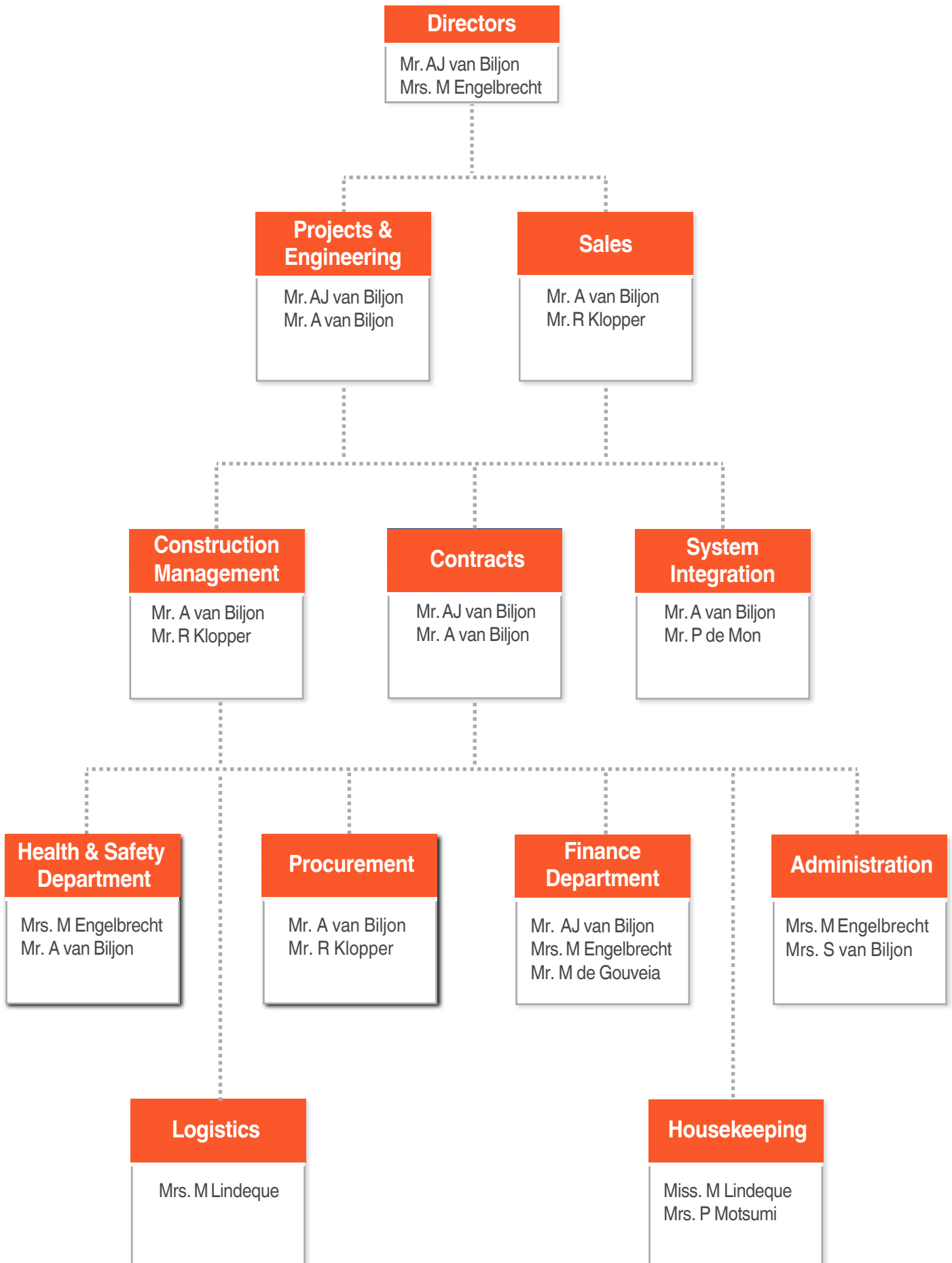
- Equipment Sales
- Projects and Services
- Installation and Construction
- Maintenance
- Instrumentation and Maintenance contracts
- Instrumentation and SCADA Software
- System Integration
- Flow surveys and Verifications
- Calibration and Certification of test equipment
- Calibration and Certification of open flow channels

Employment Equity Statement

Vaal-Tech Instrumentation, as a Broad-Based Black Economic Empowerment (B-BBEE) level 2 contributor, is committed to the principles of employment equity. We maintain a philosophy and climate that enable all individuals, regardless of gender, race, colour or creed, to have the opportunity to develop and advance within their own capabilities.

Our policies emphasize equal opportunities for all and strive to identify, develop and reward employees who demonstrate initiative, enterprise, hard work and loyalty in the workplace.

Management will continue to ensure the application of this policy until the diversity of our workforce is so evident at all levels within the company that concerns regarding racial and gender profiles become unnecessary.



Distribution

Emerson - Rosemount Emerson - Fisher	Control Valves, Regulators, Pressure-, Temperature- and Level Transmitters, Ultrasonic level measurement, Radar level measurement, Pump control, Analytical equipment.
Gefran	Programmable Indicators, Controllers, Timers, Transducers, Thermocouples, Resistance Thermometers etc.
Sensus	Turbine Water meters (hot and cold), Electromagnetic flow meters, etc.
Blanes	Pressure gauges and related products.
Swagelok	Tube fittings and tubes complete range of Stainless Steel or Brass
Delta-Mobrey	Pump Control, Open Channel Flow, Pressure Transmitters, Ultrasonic Levels, Sump & Tank Level Control
Thermo Electron	Ramsey weighing equipment and belt weighing equipment.
Emerson Fisher	Natural Gas Regulators
ATS	Air torque pneumatic actuators and Bernard electrical actuators, butterfly valves, Plug Valves, I/P.
Thermon	Heating systems, Heat Tracing and elements for industrial applications all temperature related equipment. Cartridge elements.
Elpro	Elpro Radio Telemetry and GPRS Systems (Analog, Digital and Serial wire-less communication)
Raytek	Infrared Non-Contact Temperature sensors, Thermal imagers.
Fox Controls	Idec sensors, color, laser displacement, Infrared, Position and Photoelectric sensors, Switches and Lamps, Counters, Rate, Time, Motion, Indicators, Encoders and Proximity sensors.
Emerson	Topworx Valve Position Monitoring.
Lanry	Flow meter Clamp-on and open channel.
Blanes	K-Tek Level sensors, Magnetic level, Switch, Guided Wave Radar.
Phillips	Closed circuit Video Equipment, Lenses, Monitors, Overt and Covert, Cameras and video recording equipment, etc.
Burkert	Solenoid Valves, Angle-seat Valves, Process valves, Flow sensors, Flow Transmitters, Level Sensors.
Phoenix	Signal conditioning, Lightning and Overvoltage Protection.
IFM	Flow, Temperature and Pressure sensors. Magnetic, Photoelectric, Through Beam, Color sensors, etc.

Distribution

Fluke	Fluke range of Multi meters and Test equipment.
Weidmuller	Terminal blocks and cable accessories.
Sarel	Enclosures, Steel enclosures, Polyester enclosures and cabinets.
Lonspeare	Supply of industrial cables and related products and equipment. Instrumentation and Electrical Cable. (Any length can be supplied)
Festo	Pneumatic equipment, Cylinders, Manual Valves, Solenoid Valves, Positioning, Piping, Fittings, accessories.
Adroit	SCADA Supervisory Control and Data Acquisition Systems.
Skunk	Pepper gas Alarm Systems and Protection Units.
Meissner	UPS uninterrupted power supplies.
Mimic Components	Displays, indicators and large displays.
Testo	Testo hand-held portable test equipment, temperature, pressure, flow, velocity, rpm, flue gas analyzers.
WEG	Variable Speed Drives, Soft Starters, Contactors, MCC
HACH	HACH Dissolved Oxygen Measure and control.

Distribution



Supply Product List

Alarm Systems, Pepper gas
Actuators, Electric
Actuators, Pneumatic
Analytical, Handheld Meters
Analytical, Portable Measuring Instr.,
Analytical, Sample Equipment,
Analytical, Analyzers, Gas / Liquids,
Cable Access, PVC Trunking,
Cable Access, DIN rail, G rail,
Cable Access, Terminals Blocks,
Cable Access, Ties,
Cable Access, Bootlace Ferrules
Cable Access, Insulated Lugs
Cable, Trays and Supports
Cables, Coaxial
Cables, Electrical
Cables, High Temperature
Cables, Instrumentation
Cables, Multi Core / Pair
Cables, Temperature Compensated
Calibrators, for Instrumentation
Calibrators, mA Source
CCTV, Cameras
CCTV, Lenses
CCTV, Recorders
CCTV, Monitors
Computer Hardware, Industrial
Computer Hardware, Personal
Computer, Printers
Construction, Calibration
Construction, Installation projects
Construction, Instrument repair
Construction, Valve Overhaul "9002",
Controller, c/w Digital Display,
Controller Stand Alone, Configurable
Counters,
Differential Pressure Transmitters,
Enclosure, Boxes,
Enclosure, Cabinets,
Enclosure, Custom Build, Cabinets,
Enclosure, Custom Build, Consoles,
Enclosure, Custom Build, Desks,
Enclosure, Housings,
Enclosure, Plastic,
Encoders,
Fire Detection,
Flow, Armored Meter,
Flow, Coriolis,
Flow, Magnetic,
Flow, Mass,
Flow Meter, Air / Gas,
Flow, Monitors / Indicators,
Flow, Rotameters,
Flow, Switches,
Flow, Thermal,
Flow, Totalisers,

Flow, Turbine & Paddle Wheel Type,
Flow, Vortex,
Gauges Pressure / Thermometer,
Heating Elements, Industrial,
Indicator, Bar graph,
Indicator, Panel, Digital, Configurable,
Indicator, Configurable, Alarm Unit,
Indicator, Configurable, Frequency,
Indicator, Current Meter,
Indicator, Timer, Counter,
Intercom, Systems,
Labeling Machine & Tapes,
Level, Float,
Level, Pressure Hydrostatic,
Level, Radar,
Level, Ultrasonic,
Mass, Batching Systems,
Mass, Controllers / Indicators,
Mass, In-motion Weighing Systems,
Mass, Measurement, Belt Scales,
Mass, Measurement, Load cells,
Mass, Turnkey Weighing Systems,
Orifice Plates,
Panel Lamps,
Panel, Meter, Moving, Coil,
PLC, Equipment,
Plugs, Military Spec,
Plugs, Non-Military Spec,
Pneumatic, Air driers & Chillers,
Pneumatic, Cylinders,
Pneumatic, Filters,
Pneumatic, Actuators,
Pneumatic, Valves,
Power Supplies & Transformers,
Power Supplies Uninterrupted,
Pressure Transducers, High Press.,
Pressure Transducers, Low Press.,
Pumps Dosing,
Recorder, Charts,
Recorder, Paperless,
Recorders Pen / Paper Type,
Regulator Pressure,
Scada Supervisory System,
Sensor, Pressure,
Sensor, Color,
Sensor, Distance, Laser, Detection,
Sensor, Distance,
Sensor, Flow,
Sensor, Infrared,
Sensor, Mass,
Sensor, Photo Electric,
Sensor, Retro-Reflective,
Sensor, Speed / Motion,
Sensor, Temperature,
Sensor, Thickness,

Sensor, Through Beam,
Signal Conditioning, Amplifiers,
Signal Conditioning, Convertors,
Signal Conditioning, Dual Signal,
Signal Conditioning, Isolators,
Signal Conditioning, Lightning Arrest,
Signal Conditioning, Limit Alarms,
Signal Conditioning, Surge Arrestors,
Switches, Pressure,
Switches, Proximity,
Switches, Emergency-Stop,
Switches, Key,
Switches, Momentary,
Switches, Pushbutton & Selector,
Switches, Illuminated,
Telemetry Systems, Analog,
Telemetry Systems, Digital,
Temperature, Infrared Non Contact,
Temperature, Infrared Scan,
Temperature, RTD's,
Temperature, Switches,
Temperature, Thermocouple Cable,
Temperature, Thermocouples,
Temperature, Thermowells,
Temperature, Convertors,
Timers, Electronic & Pneumatic,
Tools, Fish tapes,
Tools, Cable Tie Tensioning,
Tools, Chassis Punch, etc.,
Tools, Crimp, Light / Heavy Duty,
Tools, Hole saws, etc.,
Tools, Screwdrivers, etc.,
Tools, Side cutter, Pliers, Long nose,
Tools, Wire / Cable, Marking Machine
Tools, Wire stripper, etc.
Transducer, Pressure,
Transmitter, Conductivity,
Transmitter, Differential Pressure,
Transmitter, Level,
Transmitter, Pressure,
Transmitter, Temperature,
Tube, Fittings, Brass,
Tube, Fittings, Custom made,
Tube, Fittings, Stainless Steel,
Tube, Stainless Steel, Copper,
Valve, Gate,
Valve, Spares and Repair work,
Valves, Flow Control,
Valves, Pressure Control,
Valves, Shutoff,
Valves, Solenoid,
Valves, Ball (Hand Valves),
Valves, Butterfly,
Valves, Positioners,
Valves, V-Ball

Contact Details

Office:

Tel: 016 933 2226

Fax: 016 9332228

Email:

admin@vaal-tech.co.za

finance@vaal-tech.co.za

Address:

c/o Cartwright & Petter Street

Antonio Building

CE 6

VanderBijlpark

Gauteng

South Africa

GPS Co-ordinates:

S 26° 42.048

E 027° 50.982

